

3303 Maybank Hwy
Johns Island, SC 29455

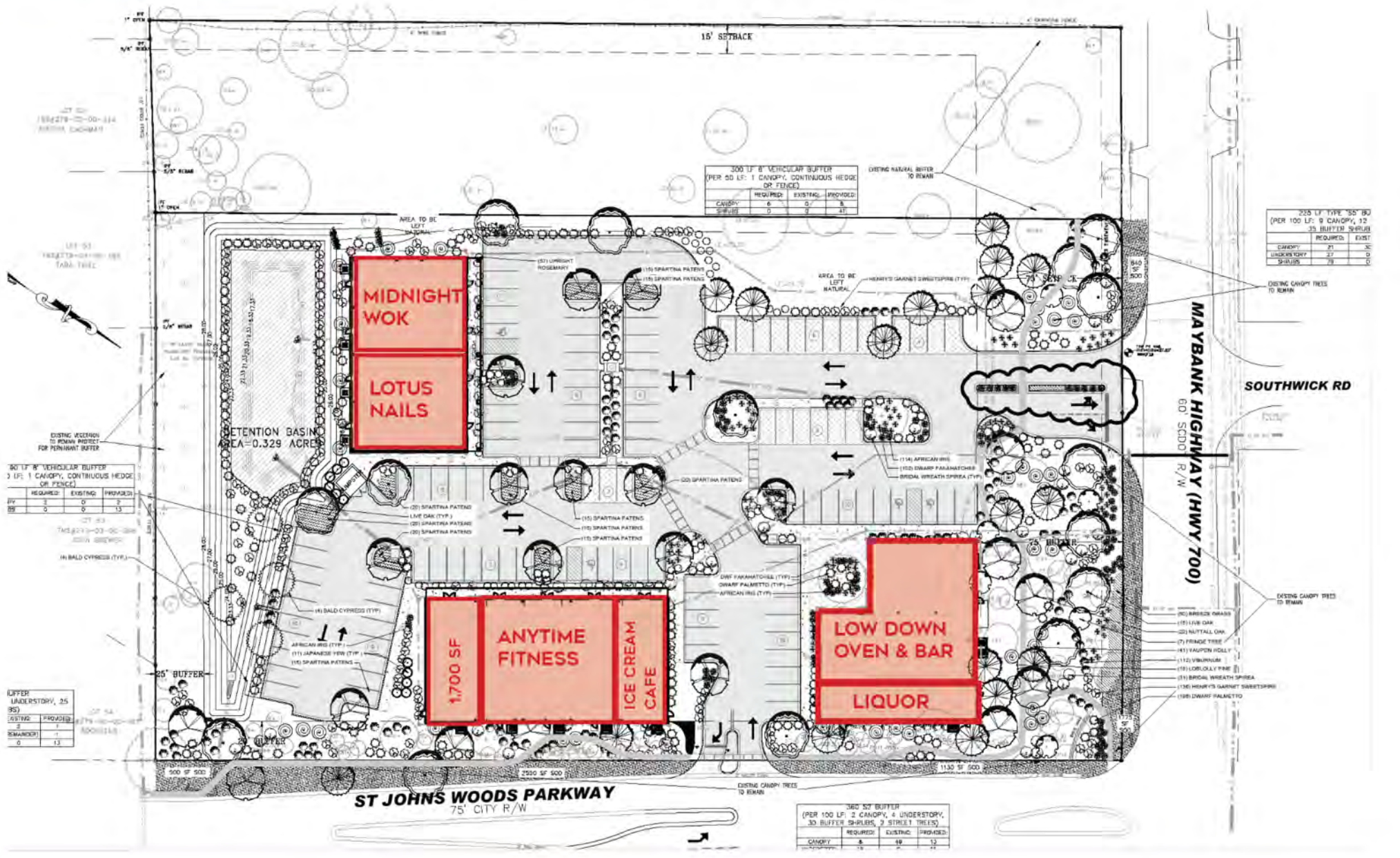


ST. JOHNS SQUARE

3506 W Montague Avenue, Suite 200
North Charleston, SC 29418
+1 843 744 9877 | cbcatlantic.com | cbcretailatlantic.com



3303 Maybank Hwy
 Johns Island, SC 29455

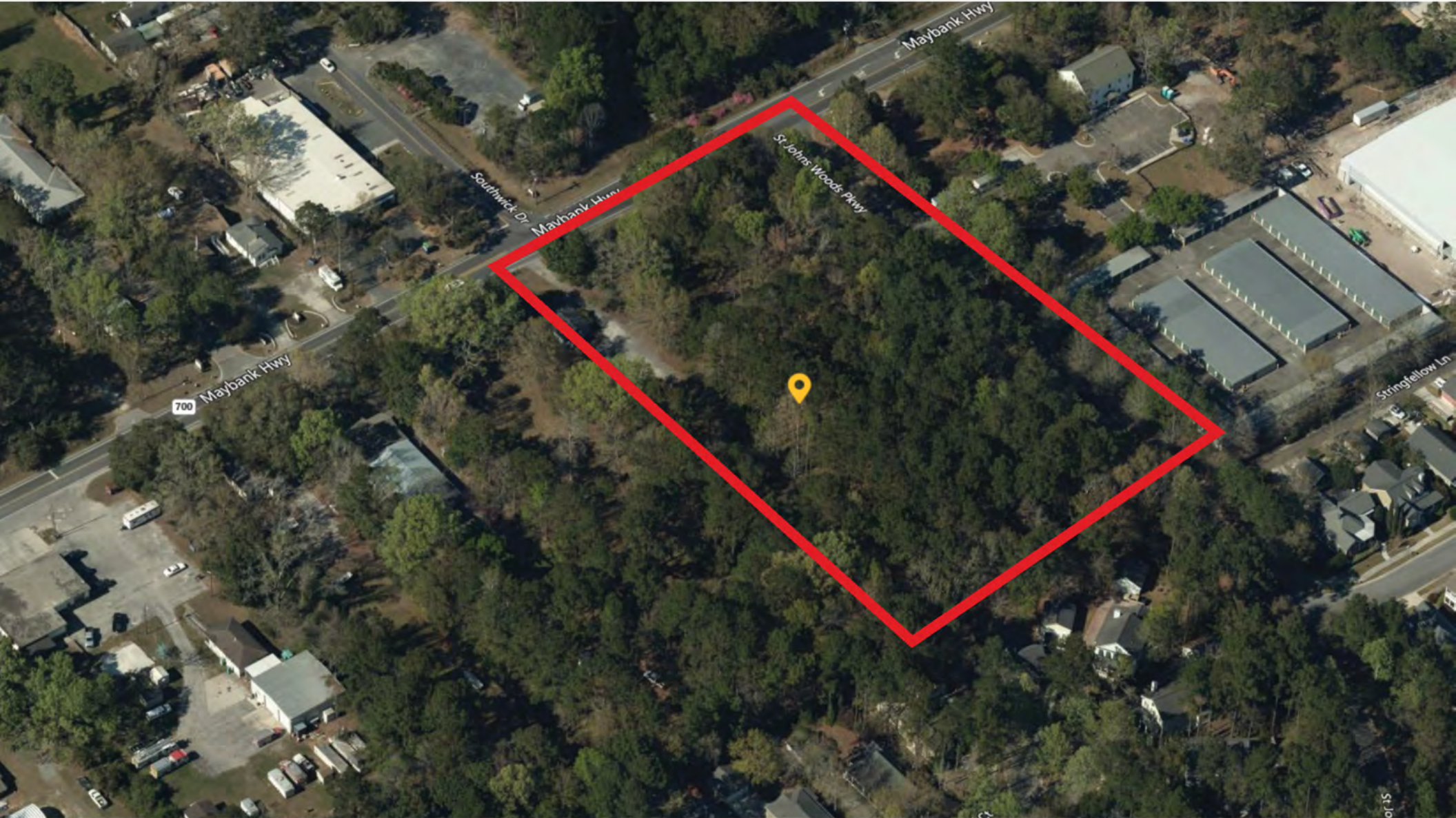


3506 W Montague Avenue, Suite 200
 North Charleston, SC 29418
 +1 843 744 9877 | cbcatlantic.com | cbcretailatlantic.com



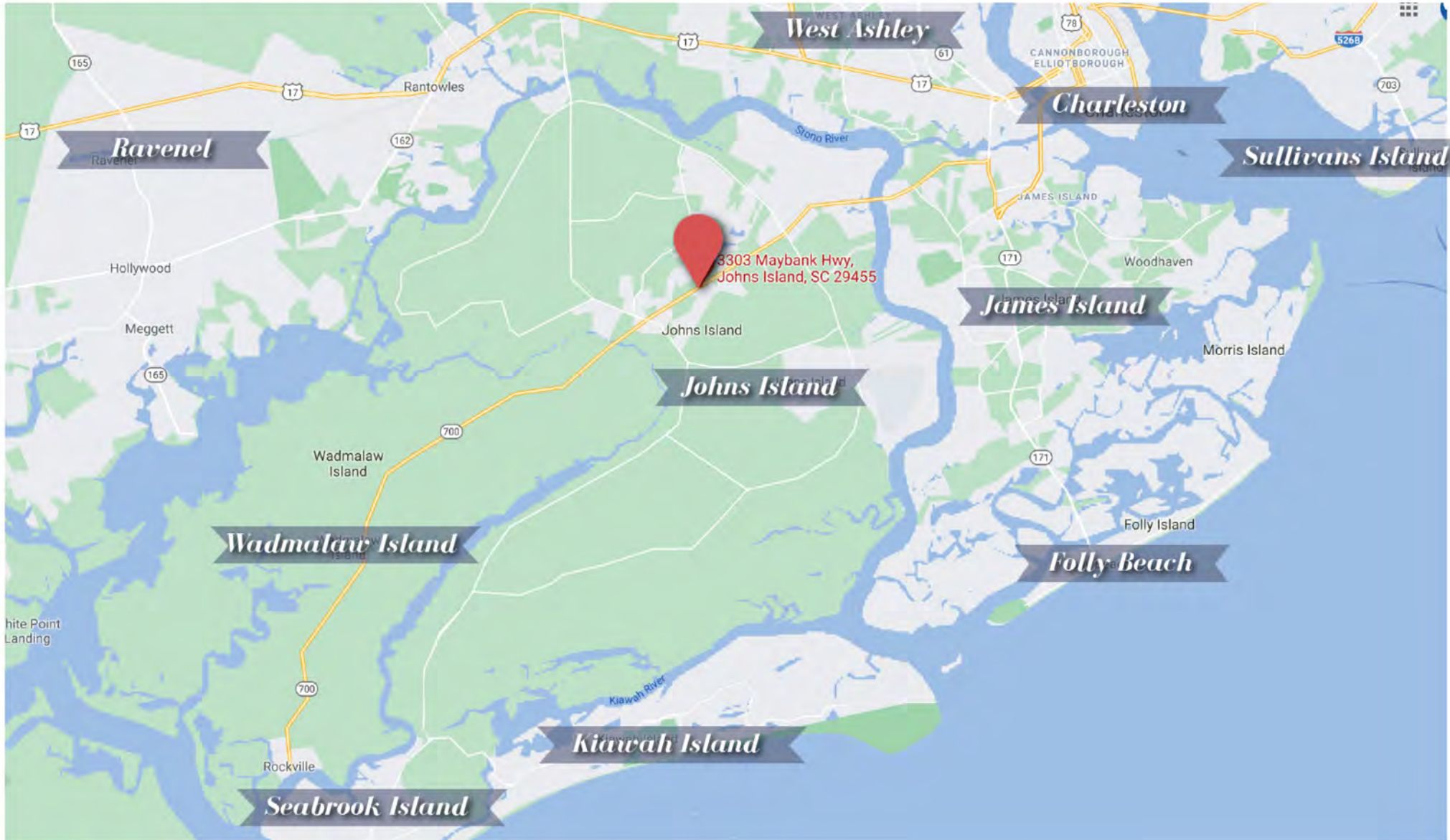
ST. JOHNS SQUARE

3303 Maybank Hwy | Johns Island, SC 29455



ST. JOHNS SQUARE

3303 Maybank Hwy | Johns Island, SC 29455



FOR LEASE: \$28 PSF
LEASE TYPE: NNN
CONTIGUOUS SPACE: 1,280 - 3,000 SF
TRAFFIC COUNT: 17,300 VPD

St. John's Square is a new multi tenant development at the corner of Maybank Hwy. and St. Johns Woods Parkway. Site will feature 34,400 square feet of retail and office across six buildings zoned General Commercial in Charleston County. The property has approximately 379 feet of frontage on Maybank Hwy. and approximately 499 feet of frontage on St Johns Woods Parkway.

ST. JOHNS SQUARE

3303 Maybank Hwy | Johns Island, SC 29455



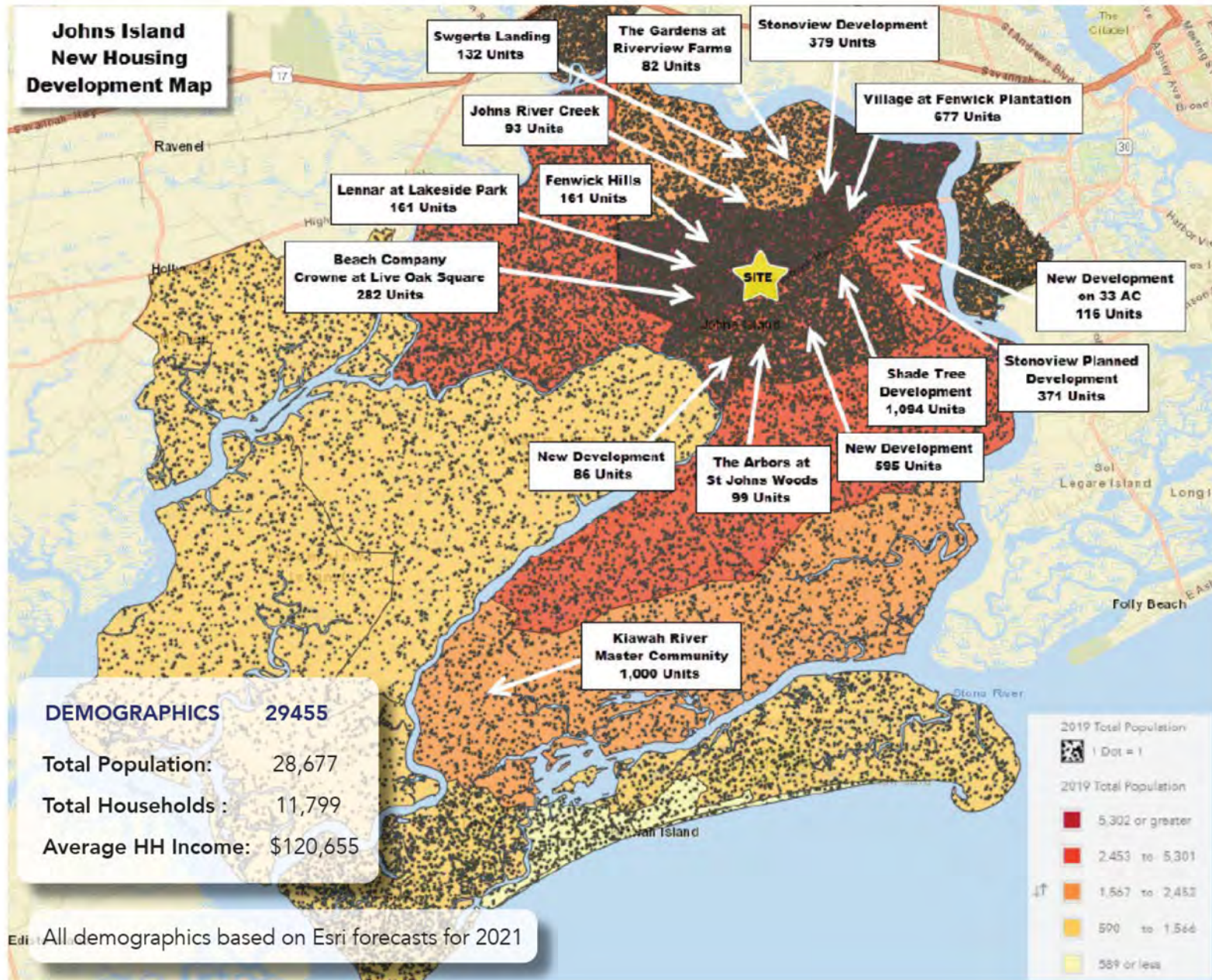
ST. JOHNS SQUARE

3303 Maybank Hwy | Johns Island, SC 29455



ST. JOHNS SQUARE

3303 Maybank Hwy | Johns Island, SC 29455

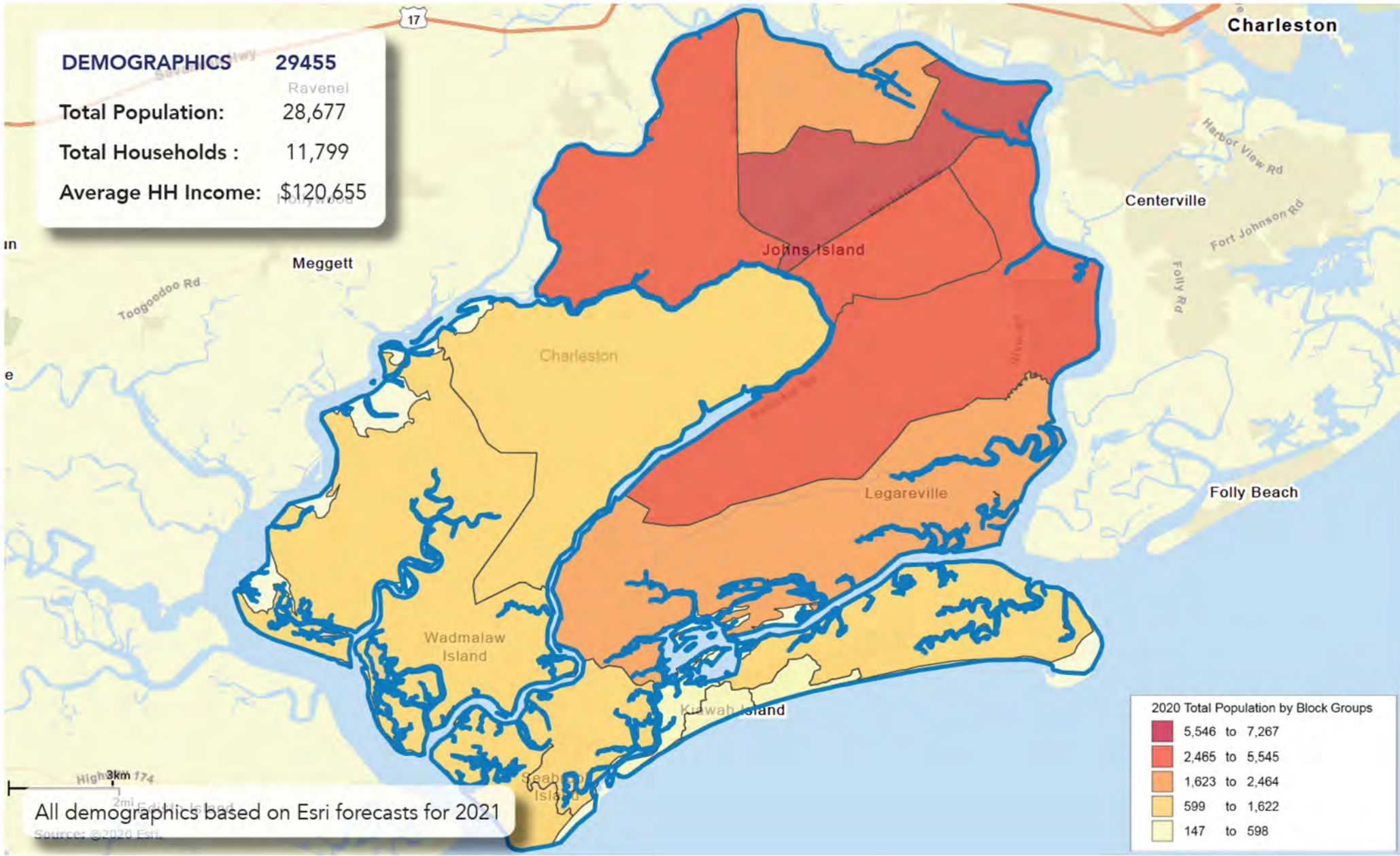


All demographics based on Esri forecasts for 2021

ST. JOHNS SQUARE

3303 Maybank Hwy | Johns Island, SC 29455

DEMOGRAPHICS 29455
Ravenel
Total Population: 28,677
Total Households : 11,799
Average HH Income: \$120,655



All demographics based on Esri forecasts for 2021
Sources: ©2020 Esri

For more information, please contact:

TIM ROWLEY

843.744.9877 (O)

843.364.5716 (C)

trowley@cbsatlantic.com

The information contained herein should be considered confidential and remains the sole property of Coldwell Banker Commercial Atlantic at all times. Although every effort has been made to ensure accuracy, no liability will be accepted for any errors or omissions. Disclosure of any information contained herein is prohibited except with the express written permission of Coldwell Banker Commercial Atlantic.