

AVAILABLE FOR LEASE
WILLOWBROOK COURT
683 EXECUTIVE DRIVE, WILLOWBROOK, IL 60527



SPECIFICATIONS:

BUILDING SIZE:	83,928 SF
AVAILABLE:	3,980 SF
OFFICE:	±1,000 SF
CLEAR HEIGHT:	14'
LOADING:	1 Dock
PARKING:	226 Spaces
ASKING RATE:	\$3,400 per months



HIGHLIGHTS:

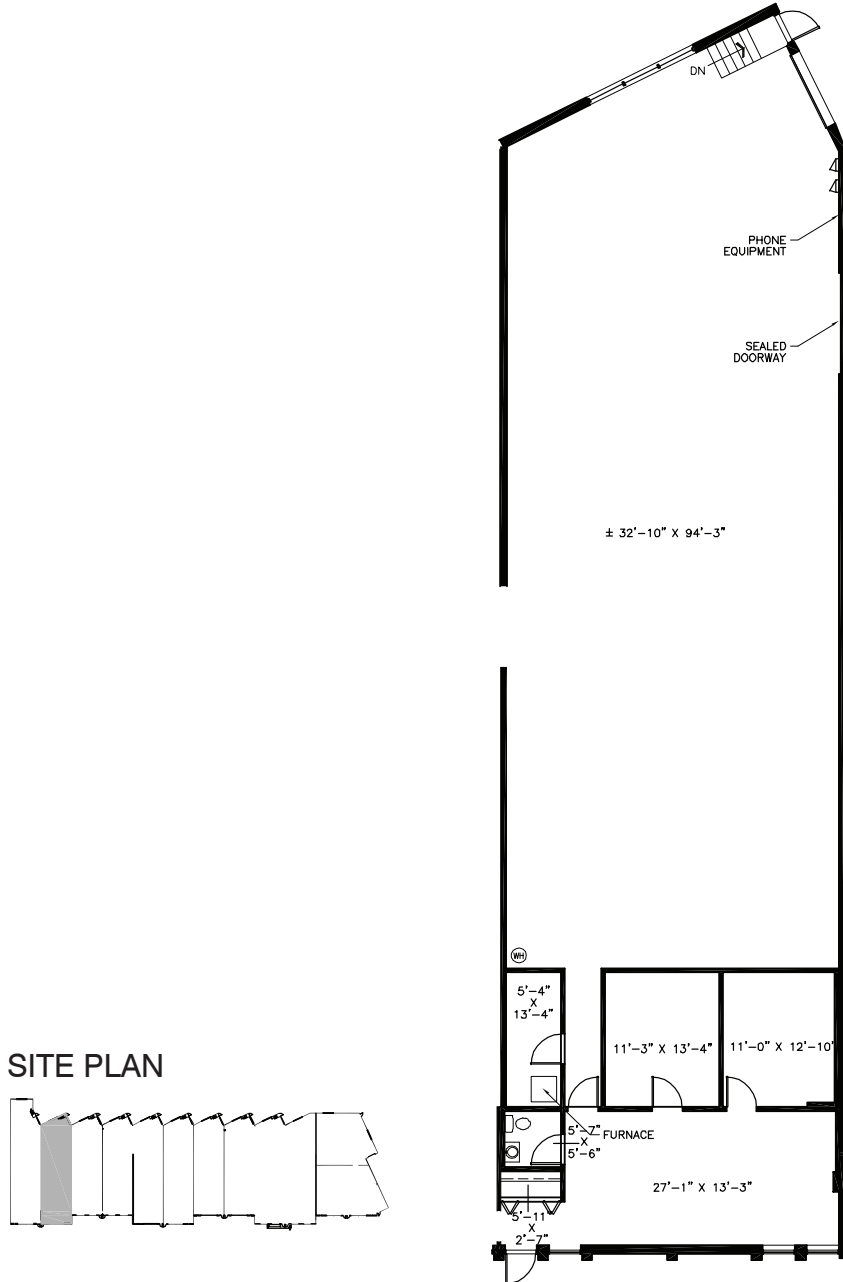
Excellent accessibility just minutes to I-55 via Route 83 interchange.

Caroline A. Dell
Associate
cdell@lee-associates.com
D 773.355.3035

All information furnished regarding property for sale, rental or financing is from sources deemed reliable, but no warranty or representation is made to the accuracy thereof and same is submitted to errors, omissions, change of price, rental or other conditions prior to sale, lease or financing or withdrawal without notice. No liability of any kind is to be imposed on the broker herein.

AVAILABLE FOR LEASE
WILLOWBROOK COURT
683 EXECUTIVE DRIVE, WILLOWBROOK, IL 60527

3,980 SF



Caroline A. Dell
Associate
cdell@lee-associates.com
D 773.355.3035

All information furnished regarding property for sale, rental or financing is from sources deemed reliable, but no warranty or representation is made to the accuracy thereof and same is submitted to errors, omissions, change of price, rental or other conditions prior to sale, lease or financing or withdrawal without notice. No liability of any kind is to be imposed on the broker herein.