

DOWNTOWN WEST PALM BEACH OFFICE CONDO FOR LEASE



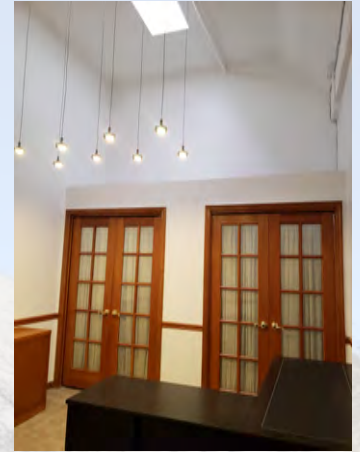
***VIA JARDIN
330 CLEMATIS STREET, SUITE 217
West Palm Beach, Florida 33401***

CONTACT: Kris Hustad, Broker Associate
EMAIL: KHustad@TouchstoneWebb.com
Cell: 561.963.9333

Touchstone Webb Realty Company
610 Clematis Street, #CU-5
West Palm Beach, FL 33401
Bus: 561.659.5554 www.TouchstoneWebb.com



DOWNTOWN WEST PALM BEACH OFFICE CONDO FOR LEASE



- **Suite 217**
- **1,000 Square Feet**
- **\$26.00 Modified Gross**
- **Tenant pays electric & janitorial service**
- **Lots of natural light in offices and support areas**
- **Recently updated professional office setting**

Via Jardin is centrally located on the main street of downtown West Palm Beach: Clematis Street; Beautifully maintained two-story office and retail building just a few minutes walk from the new Brightline train station, area courthouses, city hall, the Mandel Public Library and many restaurants and businesses; Lovely interior shaded courtyard with an attractive fountain and seating providing an inviting meeting spot.

**VIA JARDIN
330 CLEMATIS STREET, SUITE 217
West Palm Beach, Florida 33401**

CONTACT: Kris Hustad
EMAIL: KHustad@TouchstoneWebb.com
Cell: 561.963.9333

Touchstone Webb Realty Company
610 Clematis Street, #CU-5
West Palm Beach, FL 33401
Bus: 561.659.5554 www.TouchstoneWebb.com

