

Pacific Business Park Building 8

7054 S 220th Street
Kent, WA

15,488 SF shell

1,710 SF office

.....
\$0.70 PSF shell

\$0.90 PSF, NNN office add-on
.....

9 dock-high doors

2 grade-level doors
.....

20' clear height
.....

Multiple dock-doors
.....

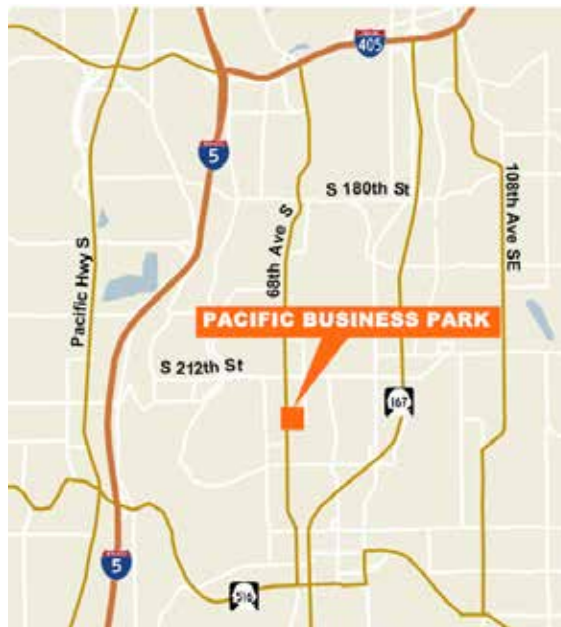
Excellent truck maneuvering
.....

Comcast Cable available
.....

Available February 1, 2019
.....



Tremendous access to I-5 and SR-167 via S 212th Street



Doug Klein, SIOR

Senior Vice President

206.248.7348

dklein@kiddermathews.com
.....

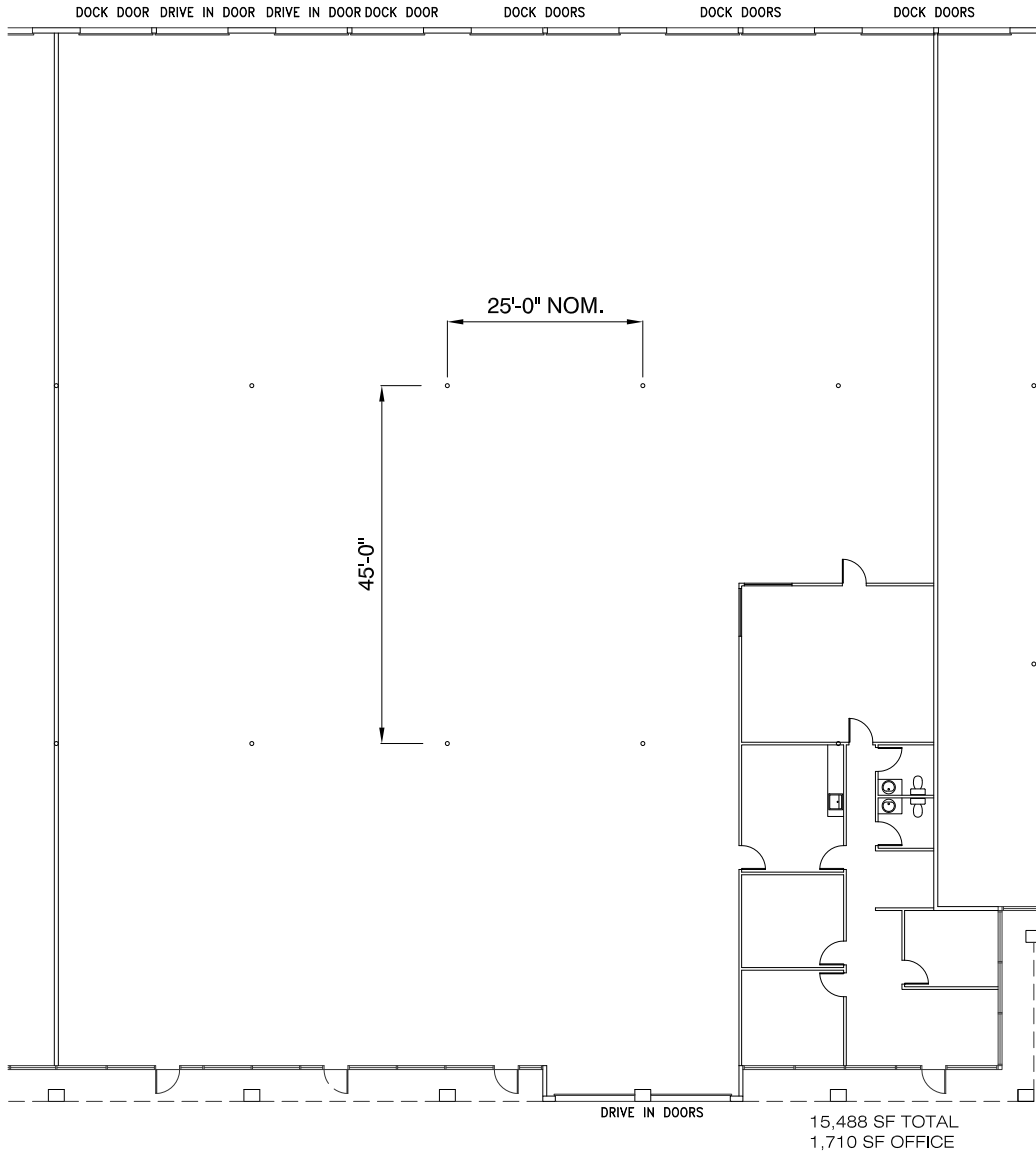
Kraig Heeter

Associate Vice President

206.248.7313

kheeter@kiddermathews.com
.....

Pacific Business Park Building 8



PACIFIC BUSINESS PARK (NORTH)
 BUILDING #3 (PTR #158)
 7054 S. 220TH STREET

Contact

Doug Klein, SIOR
 Senior Vice President
 206.248.7348
 dklein@kiddermathews.com

Kraig Heeter
 Associate Vice President
 206.248.7313
 kheeter@kiddermathews.com