

# FOR LEASE



## Bank of America Building

750 S. Orlando Avenue

Winter Park, FL 32789

### Available Space:

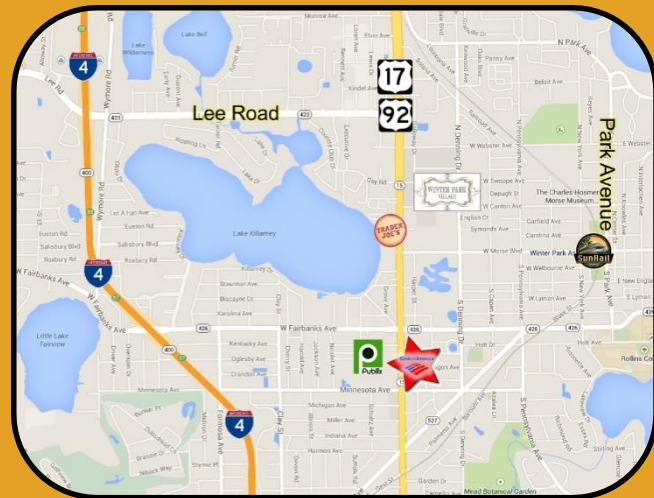
Up to 14,813± SF

### Lease Rate:

\$19.75 Full Service

## Location & Property Attributes:

- 33,126± SF Two-Story Office Building
- **High Visibility with Immediate Access to US Hwy 17/92 and Interstate-4**
- **ABUNDANT PARKING AT 8/1,000**
- In Close Proximity to the Winter Park Village, the New Trader Joe's, Fresh Market and the Ravaudage Plaza that includes an Abundance of Restaurants and Retail.
- In Walking Distance to a Large Selection of National Retailers and Within Minutes of Downtown Orlando
- Planned Interior and Common Area Improvements
- On-site Banking and Responsive Management



For Inquiries, please contact:

**Damien Madsen**

[dmadsen@taylormathis.com](mailto:dmadsen@taylormathis.com)

**Tommy Pinel**

[tpinel@taylormathis.com](mailto:tpinel@taylormathis.com)

**TAYLOR&MATHIS**

**407.622.6699**

# FOR LEASE

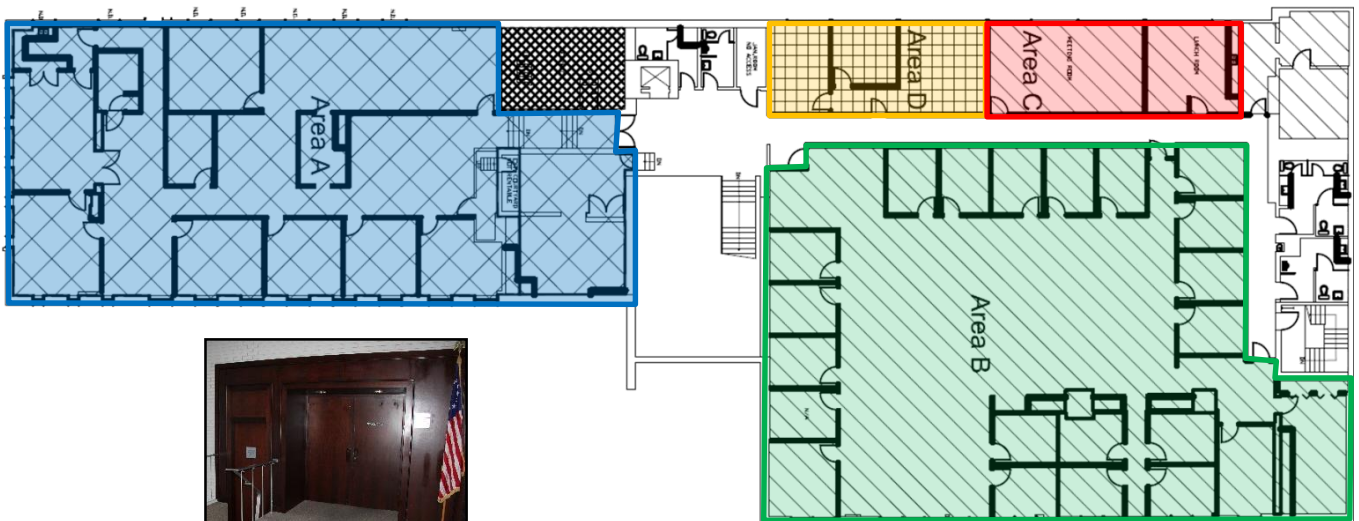


## Bank of America Building

750 S. Orlando Avenue

Winter Park, FL 32789

Available Space: Up to 14,813± SF



This space can be subdivided as follows:

Area A: 5,695± RSF

Area B: 7,060± RSF

Area C: 1,315± RSF

Area D: 743± RSF



For Inquiries, please contact:  
**Damien Madsen**  
dmadsen@taylormathis.com

**Tommy Pinel**  
tpinel@taylormathis.com

**TAYLOR&MATHIS**  
407.622.6699