

601 PENNSYLVANIA AVENUE





+

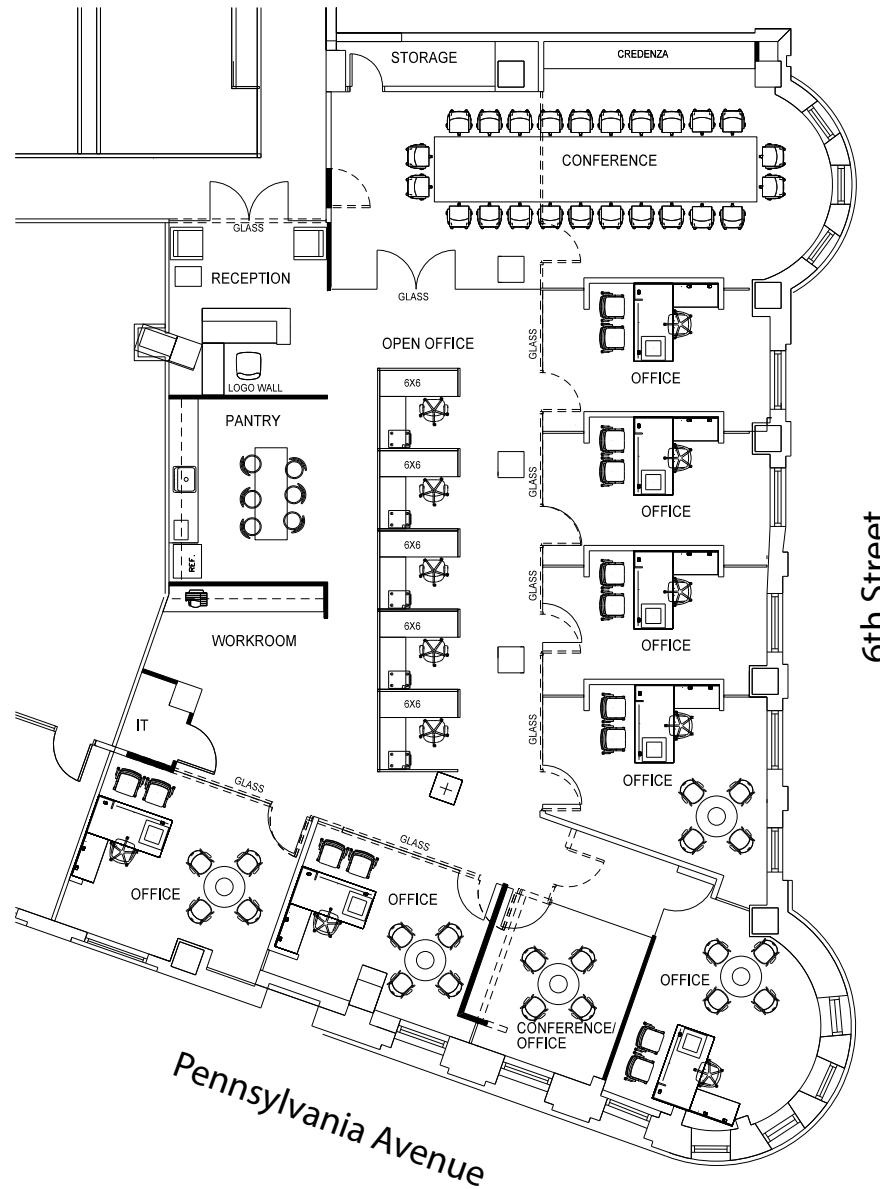
 THE POWER OF PLACE

- ✓ Exceptionally Located
- ✓ Destination Dispatch Elevators
- ✓ Capital Grille On-Site
- ✓ Tenant-Only Fitness Center
- ✓ 24/7 Security
- ✓ 1-2 Blocks from Archives-Navy Memorial, Judiciary Square and Federal Triangle Metros

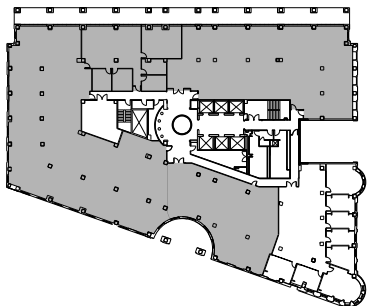


601 PENNSYLVANIA AVENUE

2nd Floor Hypothetical Plan | 4,750 RSF
Available Now

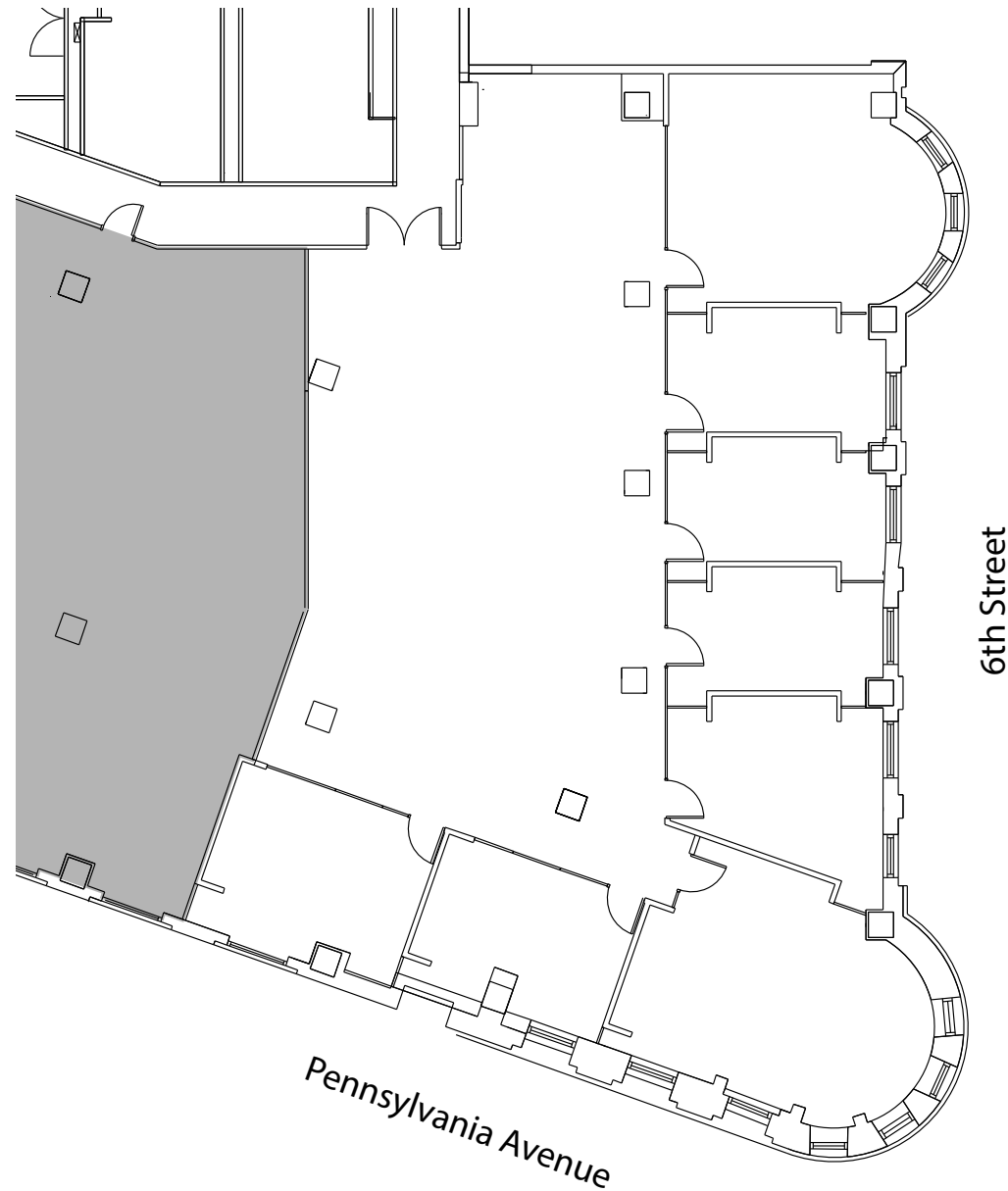


Key Plan



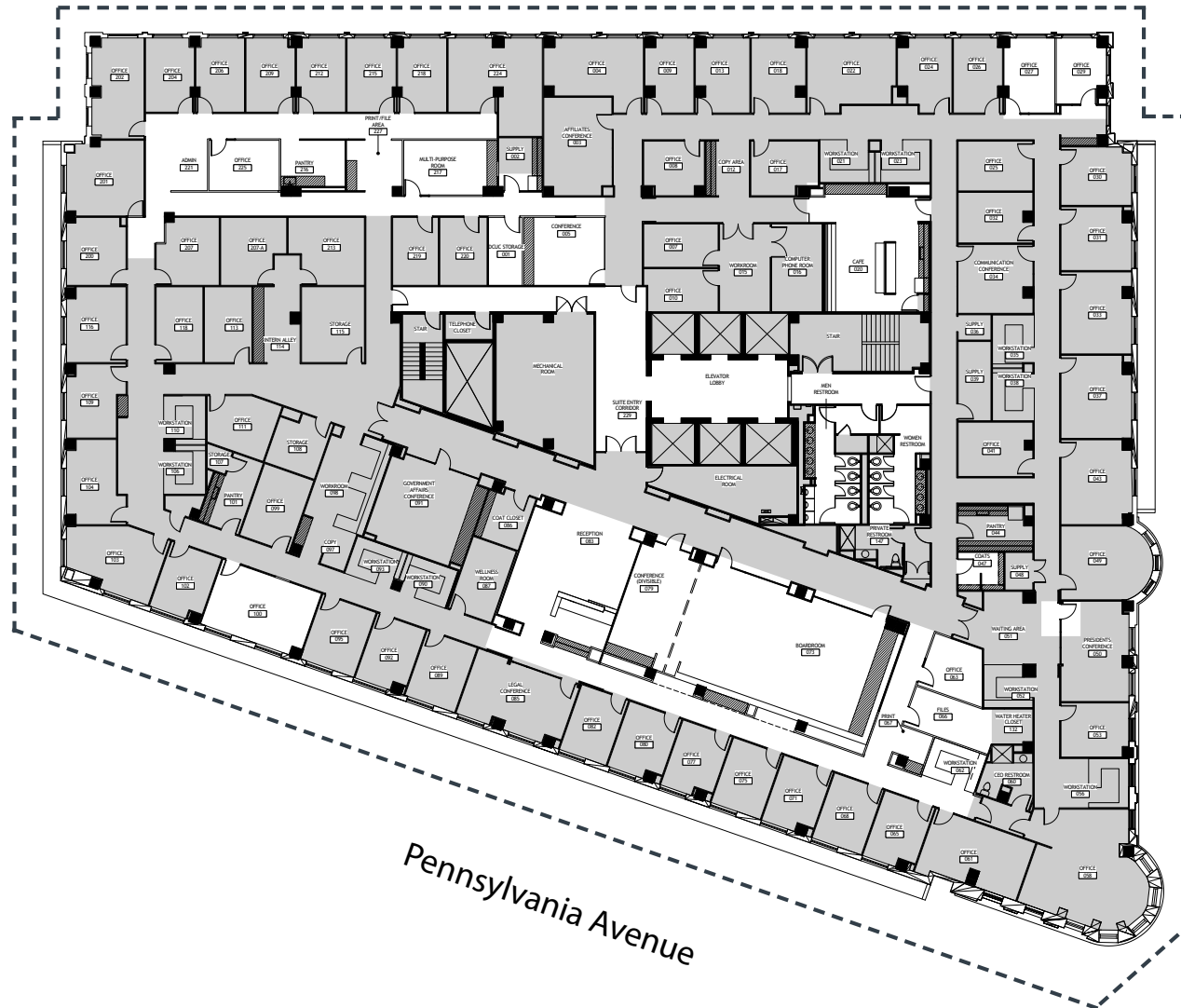
601 PENNSYLVANIA AVENUE

2nd Floor As-Built Plan | 4,750 RSF
Available Now



601 PENNSYLVANIA AVENUE

6th Floor As-Built Plan | 29,069 RSF
Available Now



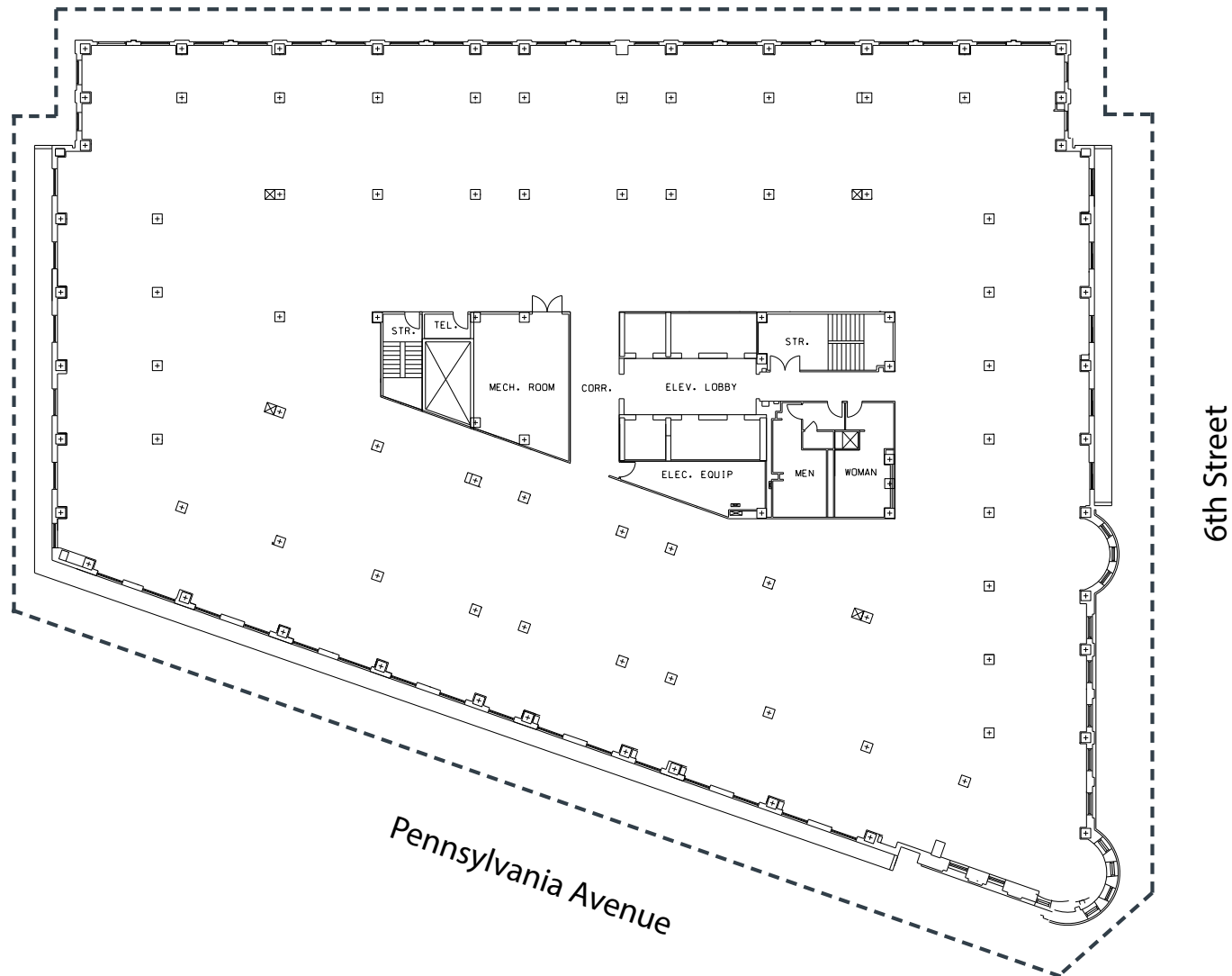
6th Street

Pennsylvania Avenue

Windows

601 PENNSYLVANIA AVENUE

6th Floor Blocking Plan | 29,069 RSF
Available Now

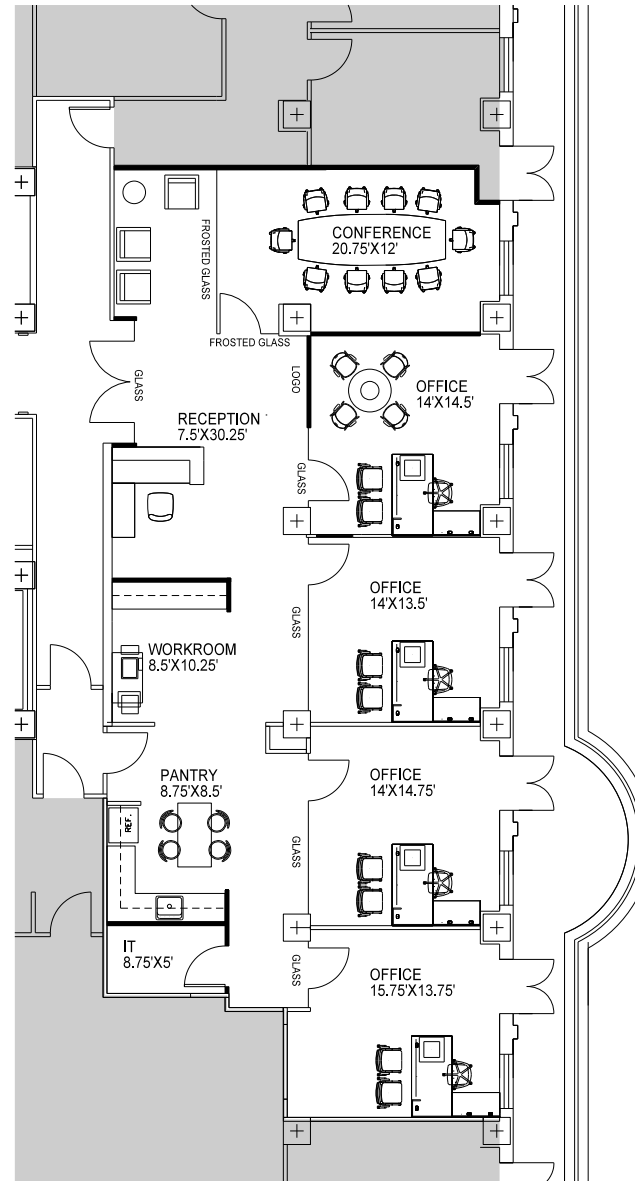


Windows



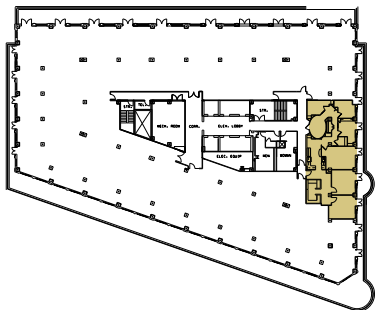
601 PENNSYLVANIA AVENUE

7th Floor Hypothetical Plan | 2,281 RSF
Available Now



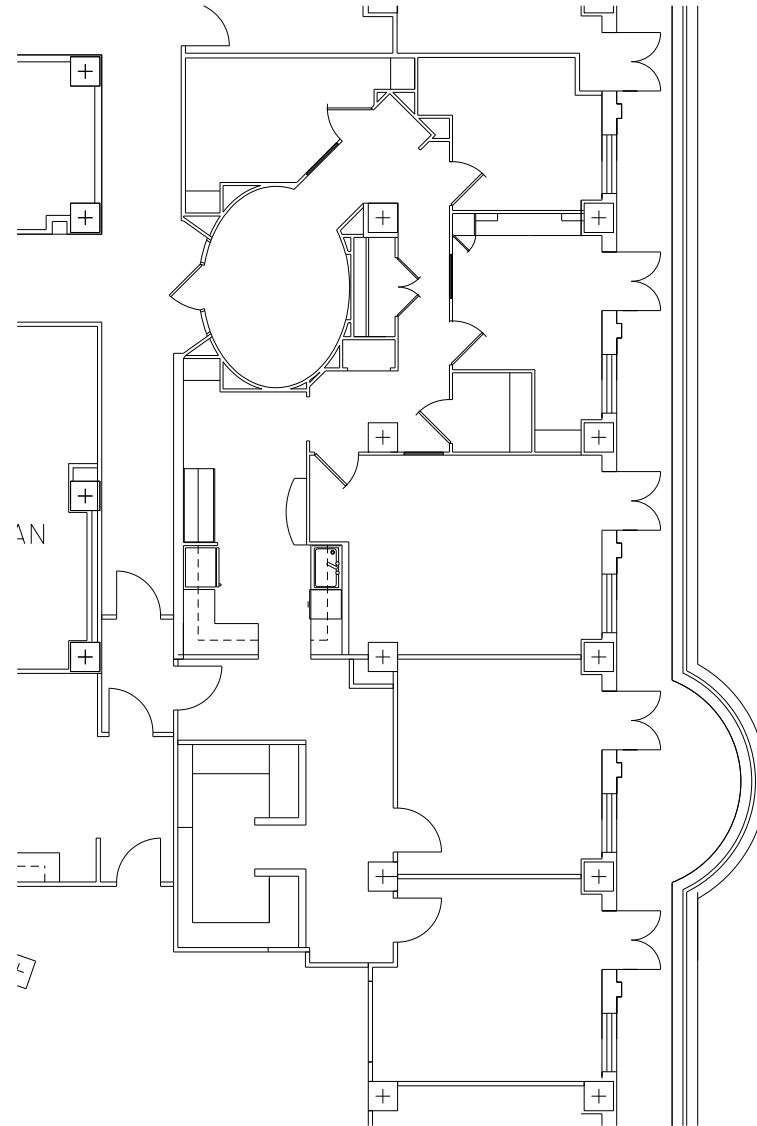
6th Street

Key Plan



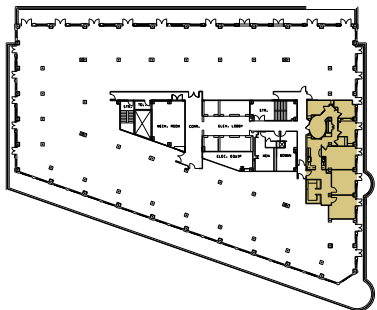
601 PENNSYLVANIA AVENUE

7th Floor As-Built Plan | 2,281 RSF
Available Now



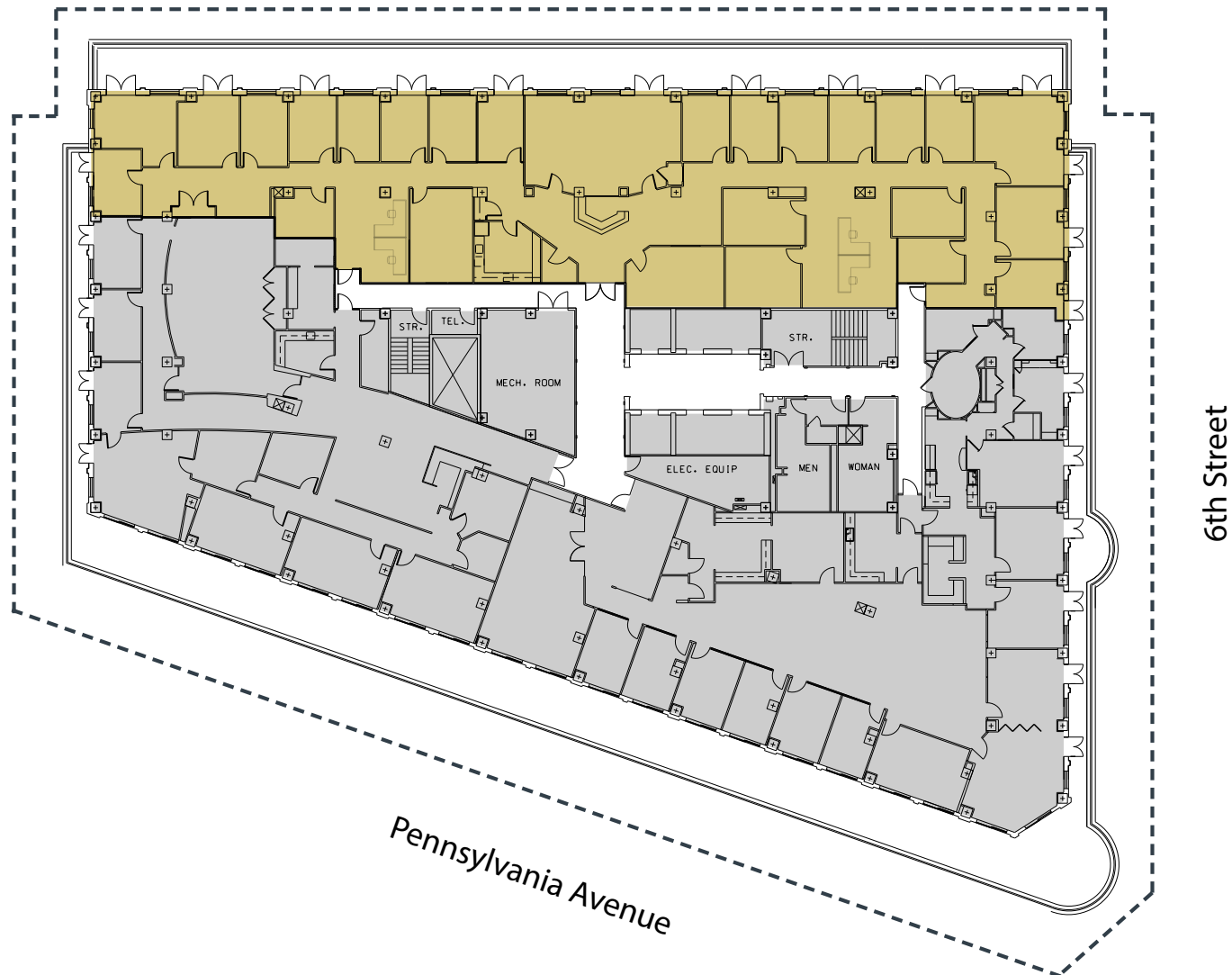
6th Street

Key Plan



601 PENNSYLVANIA AVENUE

7th Floor As-Built Plan | 9,066 RSF
Available Now



Windows

**AVISON
YOUNG**

**AVISON
YOUNG**

FOR LEASING INFORMATION CONTACT:

LAURYN HARRIS

202.644.8680

LAURYN.HARRIS@AVISONYOUNG.COM

JONATHAN WELLBORN

202.644.8552

JONATHAN.WELLBORN@AVISONYOUNG.COM

ALSTON OFFUTT

202.644.8554

ALSTON.OFFUTT@AVISONYOUNG.COM