

511 EAST JOHN CARPENTER



BUILDING SIZE
160,782 SF



CONFIGURATION
7 FLOORS



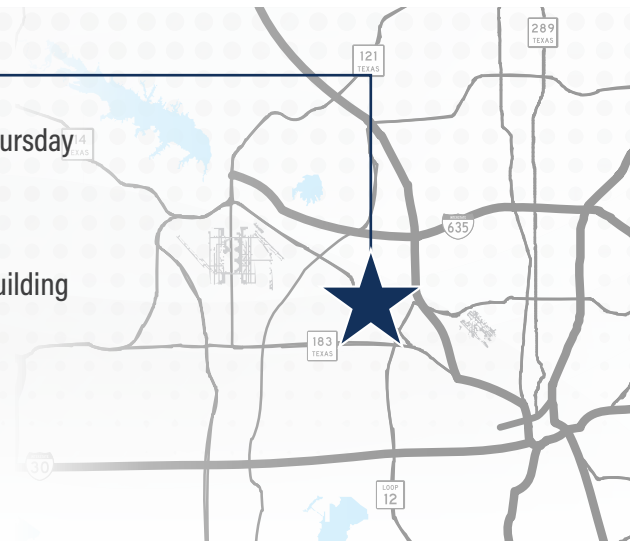
PARKING
4.00:1,000 SF



YEAR BUILT/RENOVATED
1983/2017

BUILDING FEATURES

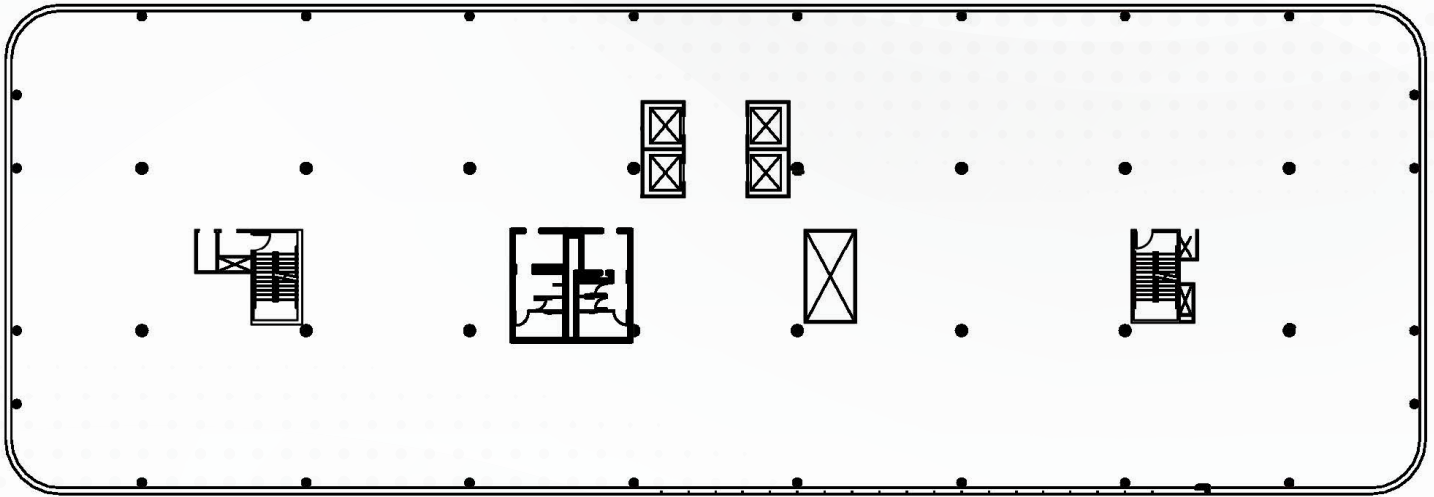
- » Close proximity to DFW International Airport and Love Field Airports
- » Direct access covered parking
- » On-site conference center, fitness center and tenant lounge
- » Patio along the Mandalay Canal
- » Part of Foodsby network, a lunch delivery service for business professionals
- » Food trucks Tuesday through Thursday every week
- » On-site property management
- » Card-controlled access to the building and parking garage
- » Recycling service
- » Car wash service
- » Monument signage available



DUANE HENLEY
Managing Director
(214) 446-4502
duane.henley@transwestern.com

NATHAN DURHAM
Principal
(972) 774-2503
nathan.durham@transwestern.com

TYPICAL FLOOR | 22,900 RSF



ABOUT CODINA PARTNERS

Codina Partners is a hands-on owner responsive to the needs of today's office space users. Codina recently transitioned two significant Las Colinas buildings; Waterway Tower and Crestview Tower, implementing strategic building improvements increasing occupancies to over 90% in 1.5 years. The partnership recently acquired Greenhill Towers, completing a \$8MM capital improvement transformation.

Leased by



Owned by



Managed by



DUANE HENLEY
Managing Director
 (214) 446-4502
 duane.henley@transwestern.com

NATHAN DURHAM
Principal
 (972) 774-2503
 nathan.durham@transwestern.com