



OFFICE FOR LEASE

# 5180 Golden Foothill Parkway

EL DORADO HILLS, CA

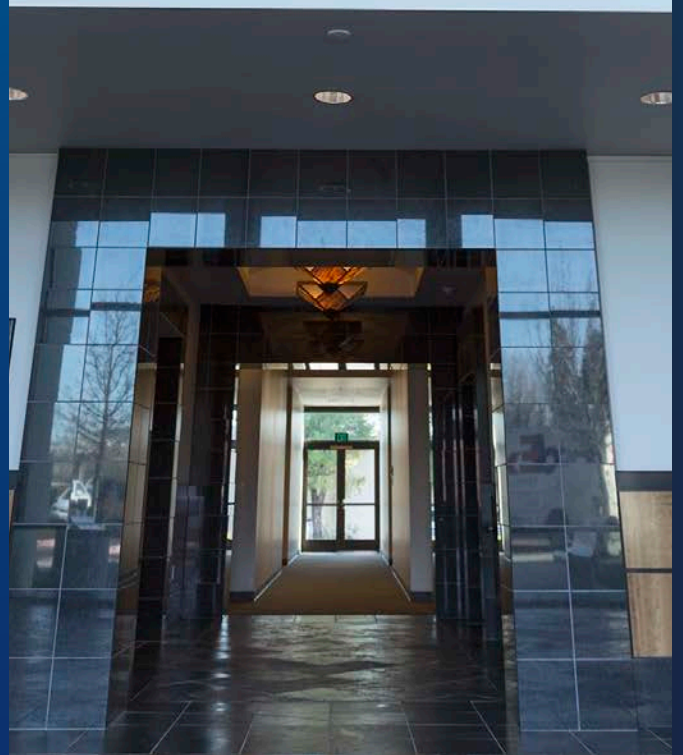
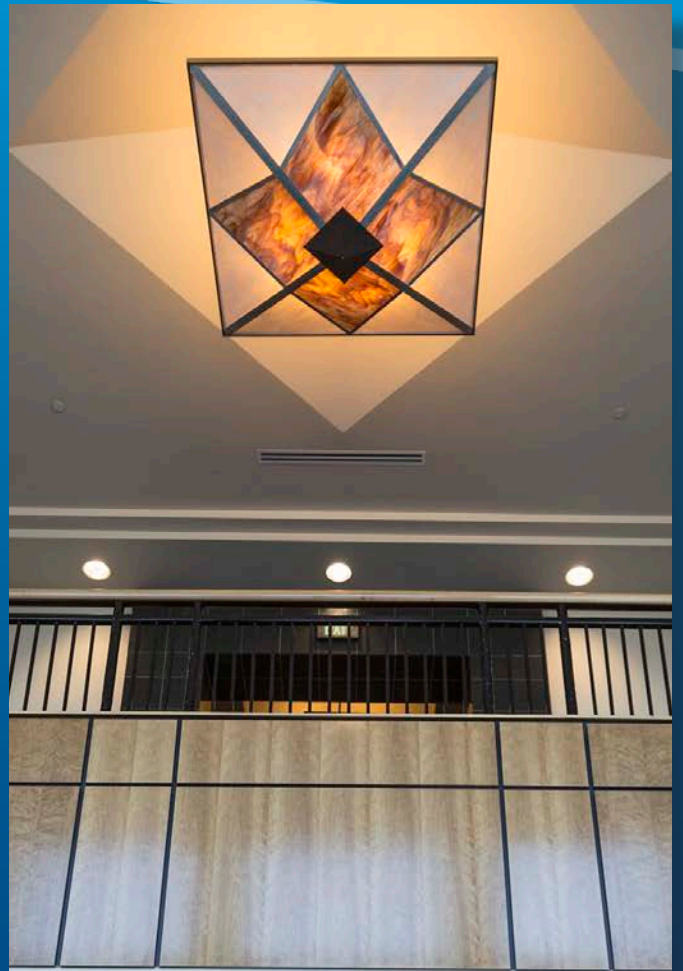
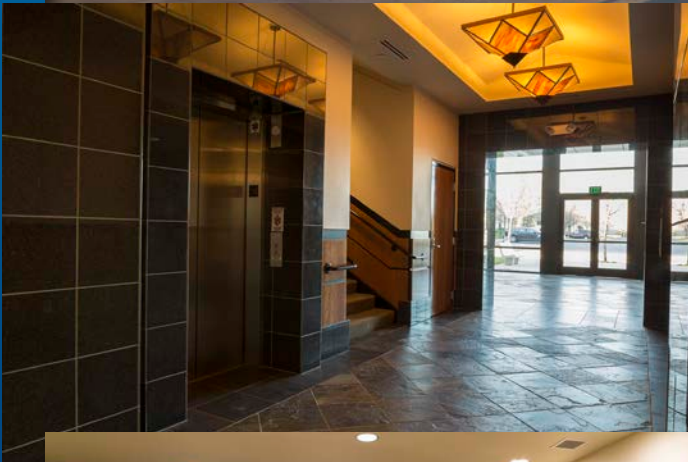
- › ±12,207 - ±37,778 RSF contiguous available
- › Suites from ±1,945 - ±37,778
- › Two story Class A building
- › Building Signage
- › Excess Parking
- › Located in El Dorado Hills Business Park
- › All retail amenities close by
- › Five minutes to Highway 50

TOM WALCOTT, SIOR, CCIM  
916 563 3002  
LIC# 01485640  
thomas.walcott@colliers.com



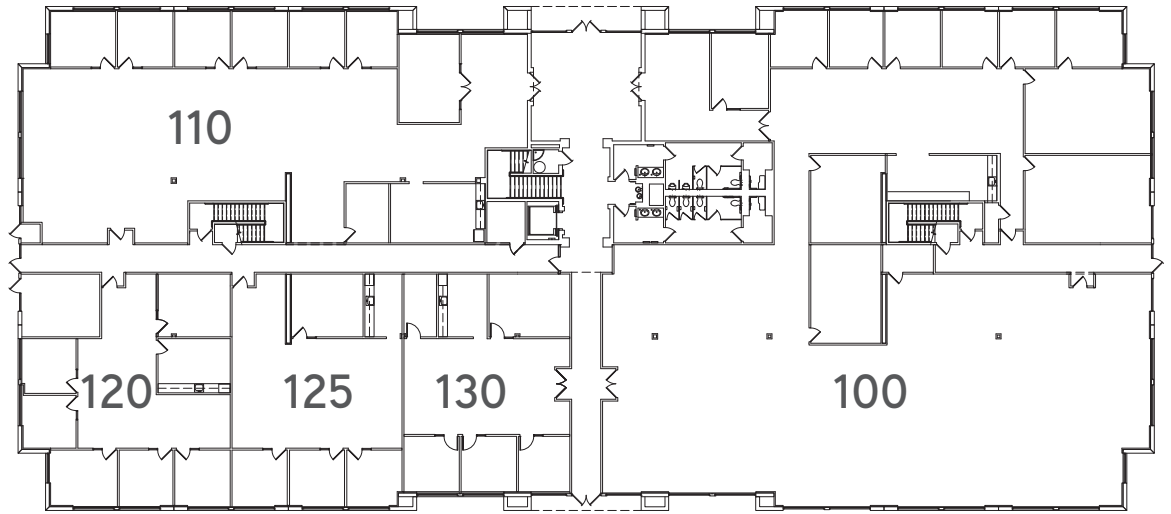


# PHOTOS



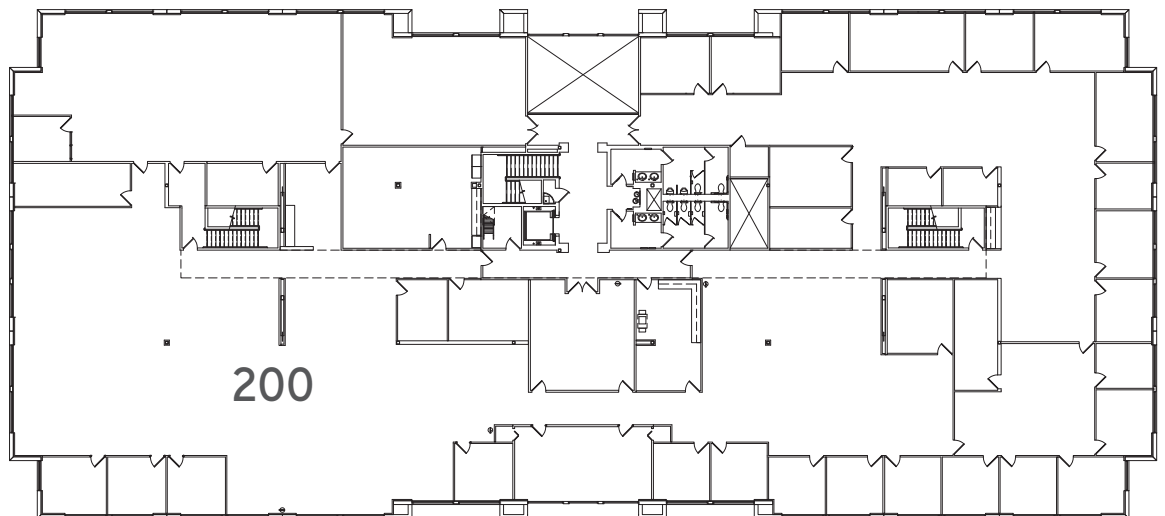
## Floorplan First Floor > ±24,099 SF

- Suites 110 > ±5,587 SF
- 120 > ±2,236 SF
- 125 > ±2,124 SF
- 130 > ±1,945 SF
  
- 100 > ±12,207 SF
- Contiguous to suite 100



## Floorplan Second Floor > ±25,886 SF

- Suite 200 > ±25,886 SF
- Contiguous to suite 100







## Contact Informaiton

TOM WALCOTT, SIOR, CCIM  
 916 563 3002  
 LIC# 01485640  
 thomas.walcott@colliers.com

COLLIERS INTERNATIONAL  
 301 University Avenue, Suite 100  
 Sacramento, CA 95825  
 www.colliers.com

