

WOODS EDGE ROAD

South Chesterfield, VA

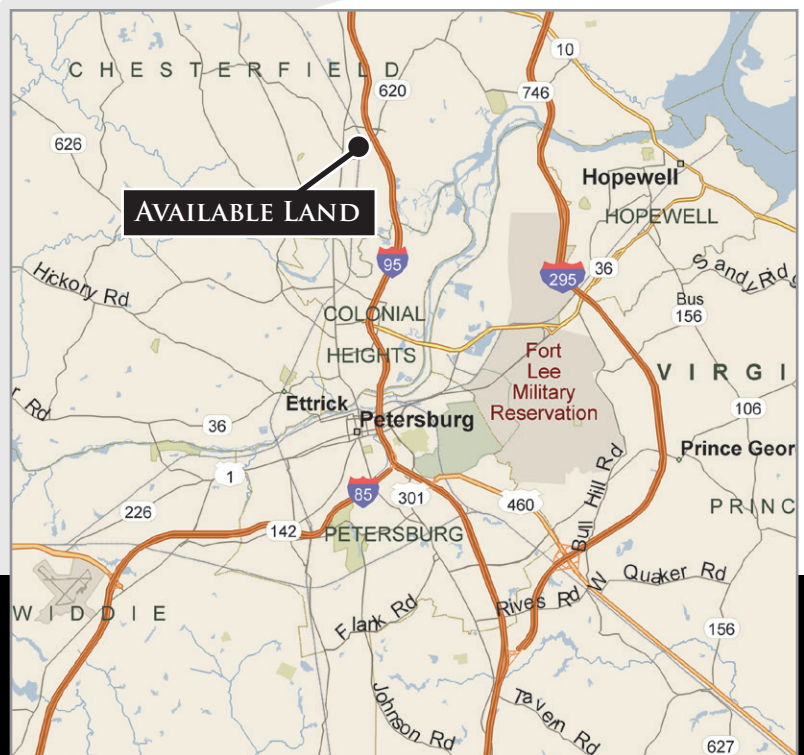
FOR SALE



1-2.5 ACRES AVAILABLE IN SOUTH CHESTERFIELD, VA

PROPERTY HIGHLIGHTS:

- ▶ Land available along Woods Edge Road
- ▶ Multiple sites available from 1 - 2.5 Acres
- ▶ Zoned C-5 with all utilities and BMP
- ▶ Directly off I-95 Exit 58
- ▶ Adjacent to McDonald's, Candlewood Suites, Comfort Inn, Subway, FedEx Freight, Honeywell International and more
- ▶ Excellent location for Restaurant, Retail or Medical
- ▶ Ground Lease or Build To Suit possible



Nathan S. Jones, IV

nathan.jones@domcommercial.com

Office: 855.530.2300, Call or Text!

domcomm.com

Follow us on:



WOODS EDGE ROAD

FOR SALE

South Chesterfield, VA



DOMINIONCOMMERCIAL
REAL PARTNERS for REAL ESTATE

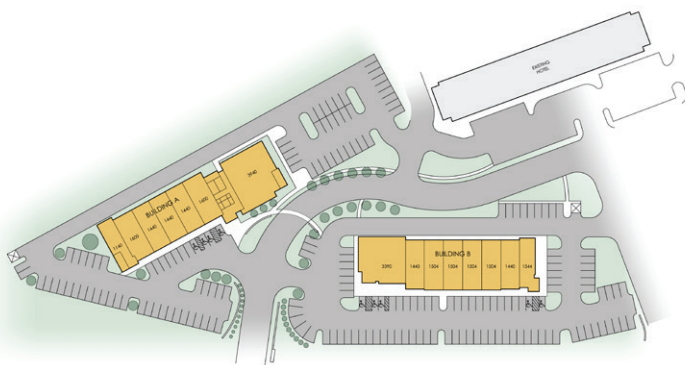
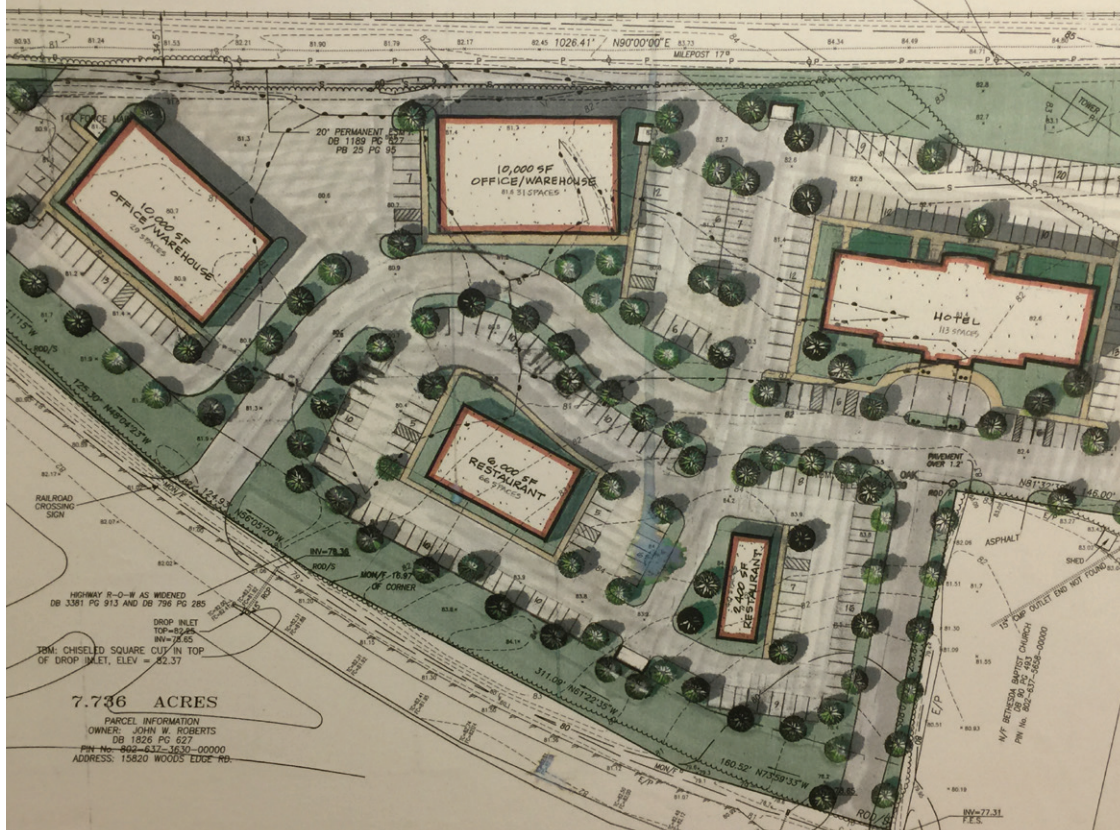
Nathan S. Jones, IV
nathan.jones@domcommercial.com
Office: 855.530.2300, Call or Text!
domcomm.com

WOODS EDGE ROAD

FOR SALE

South Chesterfield, VA

CONCEPTUAL RENDERINGS & PLANS



Nathan S. Jones, IV
nathan.jones@domcommercial.com
Office: 855.530.2300, Call or Text!
domcomm.com