



# HIGH-END CREATIVE OFFICE OPPORTUNITY

11189 SORRENTO VALLEY ROAD, SUITE 103  
SAN DIEGO, CA 92121

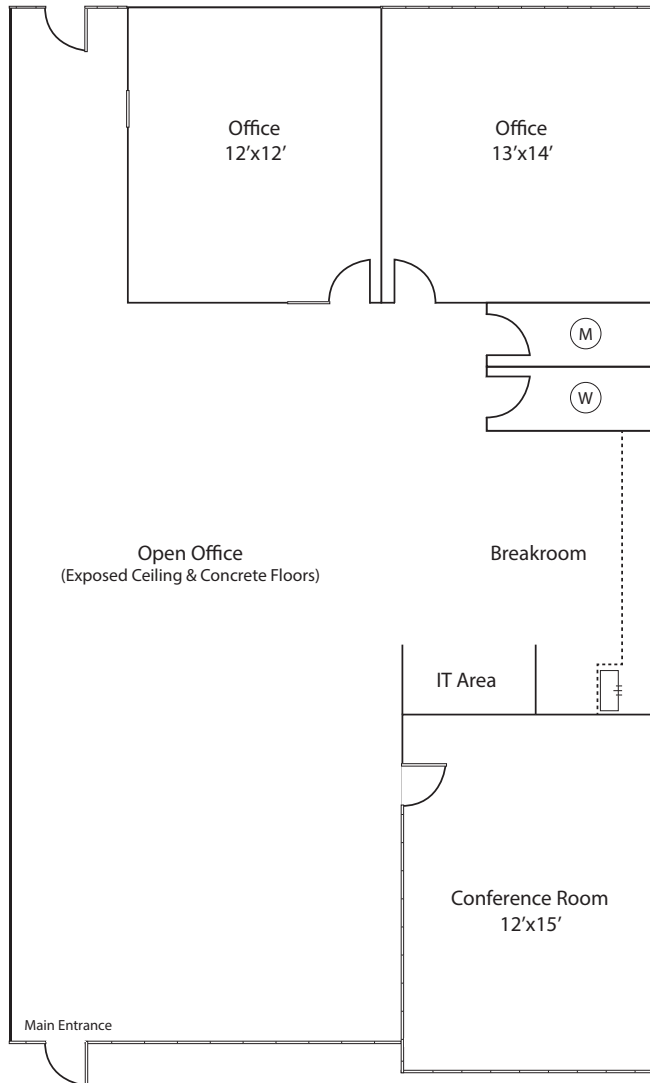




### Suite Highlights:

- Open exposed ceiling with metal spiral ducting
- Polished concrete flooring
- Floor-to-ceiling glass accents at entrance, conference room & private offices
- 2 building top signs and monument sign available



**Suite #103 | 1,767 SF****Existing Build-Out:**

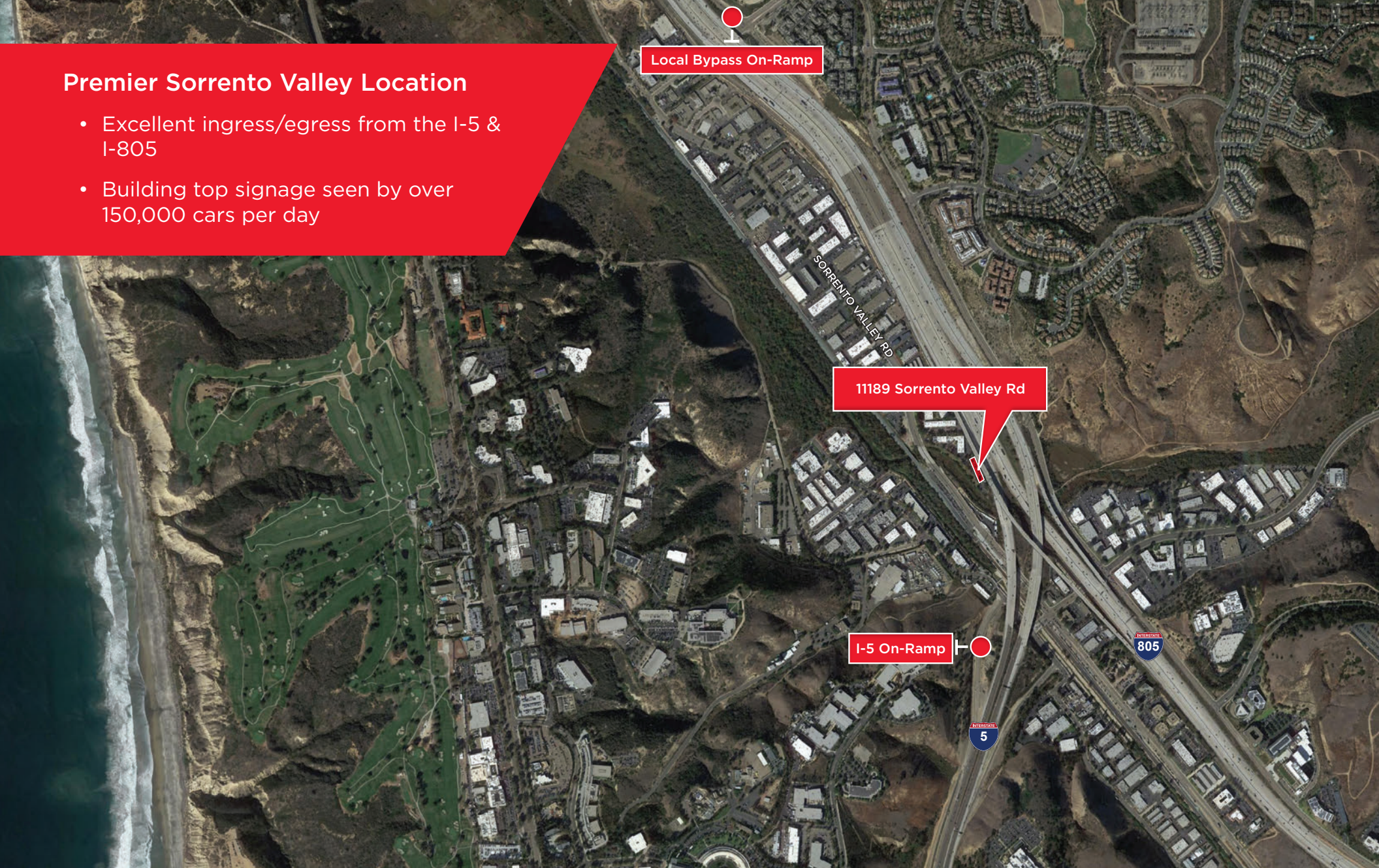
- Large open bullpen
- Conference room
- 2 private offices
- Private interior restrooms
- Kitchenette with sink & refrigerator





## Premier Sorrento Valley Location

- Excellent ingress/egress from the I-5 & I-805
- Building top signage seen by over 150,000 cars per day



For more information, please contact:

**Michael Cassolato**

Director

(858) 546-5434

michael.cassolato@cushwake.com

CA Lic# 01893847



4747 Executive Drive  
9th Floor  
San Diego, CA 92121

P +1 858 546 5400  
F +1 858 630 6320

[www.cushmanwakefield.com](http://www.cushmanwakefield.com)