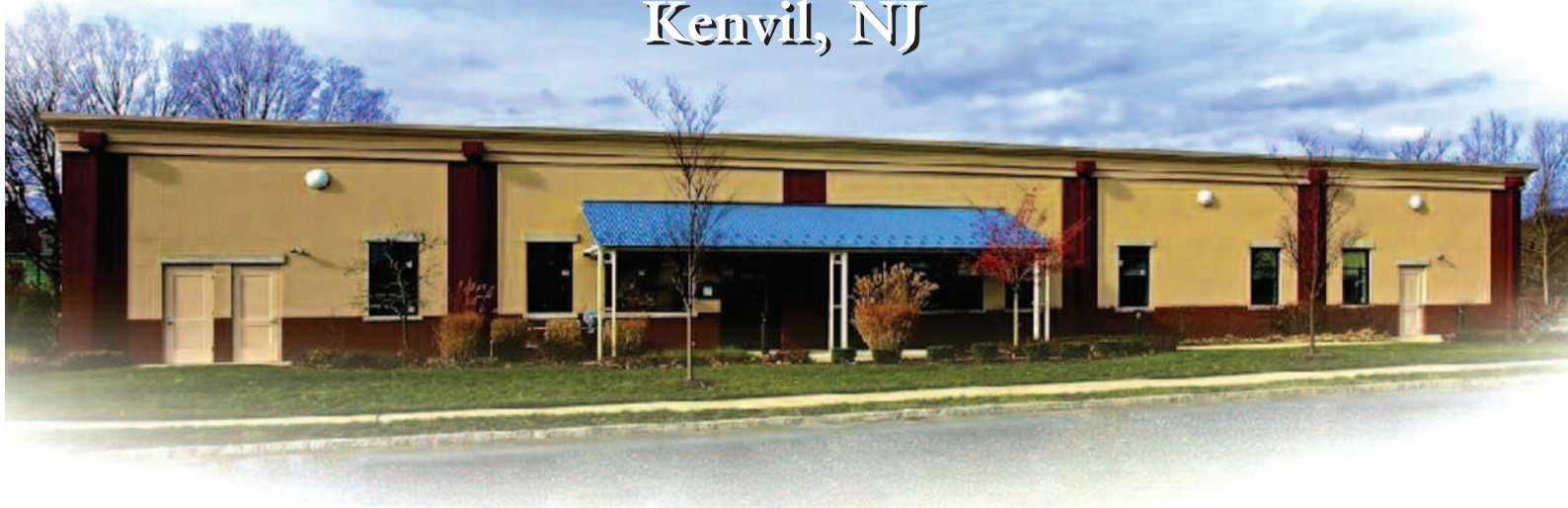


677 Route 46 W Kenvil, NJ



FOR LEASE

PROPERTY SPECS:

Available Space: 2,570 SF
Total Building: 15,625 SF
Zoning: B-2
(Permitted uses:
Medical, office,
child care, retail)

Car Parking: 5 per 1,000
Available: Immediately
Lease Rate: \$14.00 PSF NNN
Tax/CAM: \$3.68 PSF

Comments: Newly renovated corner property located at the intersection of Route 46 and Berkshire Valley Road, with illuminated monument signage. Close to Route 10 and Route 80. This building has received multiple municipal awards.



For more information, please contact:

Brian Wilson
bwilson@resource-realty.com

Scott Peck, SIOR
speck@resource-realty.com

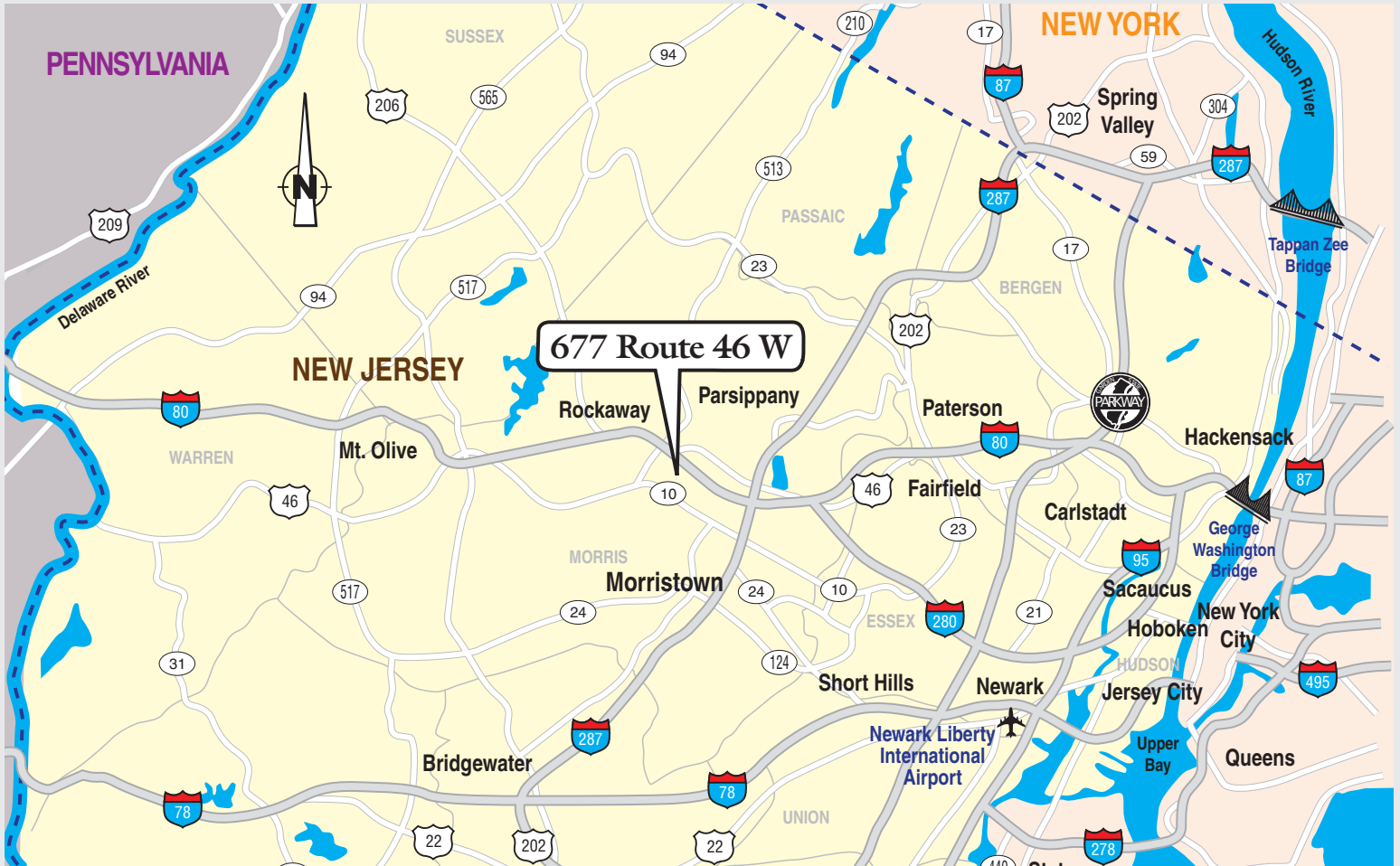
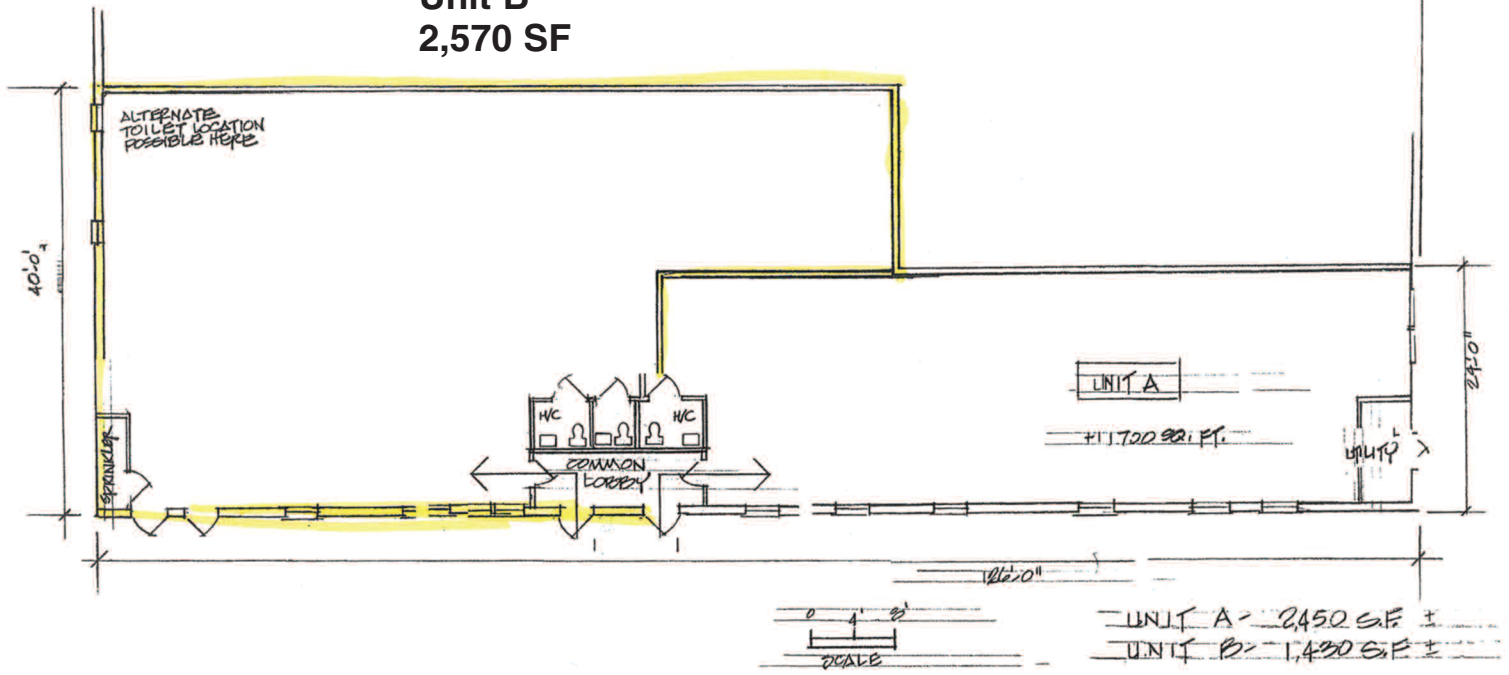
973-299-0900

Exclusive Leasing Agent:



Resource Realty
Corporate Real Estate Services
www.resource-realty.com

**Unit B
2,570 SF**



All information furnished is from sources deemed reliable. No representation is made as to the accuracy thereof and it is submitted subject to error, omission, change of price, prior sale or lease and withdrawal without notice. Any commission due cooperating brokers is subject to all of the terms and conditions upon which we and our clients have agreed.

Exclusive Leasing Agent:



973-299-0900
www.resource-realty.com