

For Lease

Winters Chapel Business Center

4565-4567 Winters Chapel Road, Norcross, GA, 30092

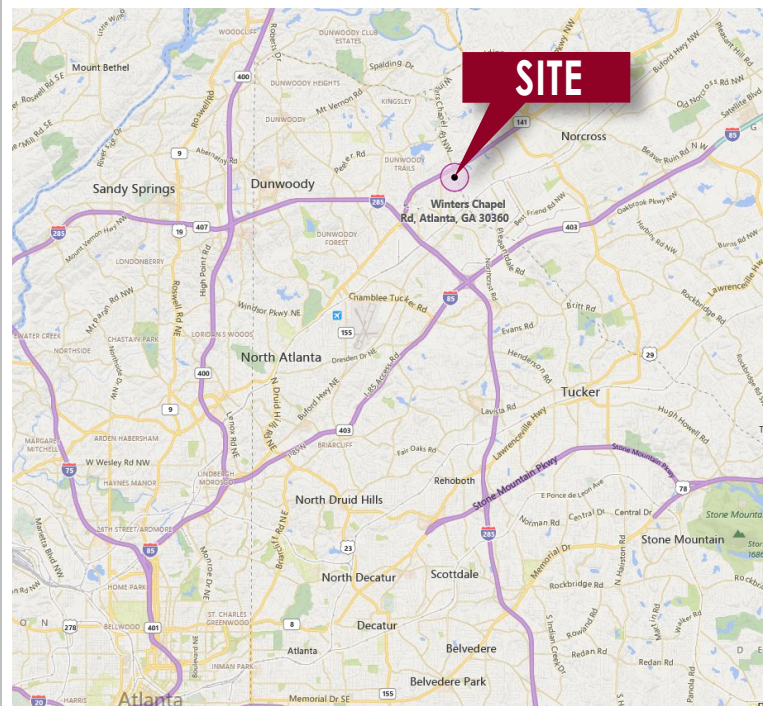


PROPERTY OVERVIEW

County: Dekalb
Sub Market: Doraville Industrial
Property Type: Distribution

BUILDING DATA 4565-4567

Total Building SF: 66,707 SF
Available SF: 16,425 SF
Office SF: 5,954 SF
Clear Height: 24'
Loading Docks: 3 DH door
Equipment: 1 pit-leveler



All information furnished regarding property for sale, rental or financing is from sources deemed reliable, but no warranty or representation is made to the accuracy thereof and same is submitted to errors, omissions, change of price, rental or other conditions prior to sale, lease or financing or withdrawal without notice. No liability of any kind is to be imposed on the broker herein.



For more information contact:
Craig Viergever, SIOR
cviergever@lee-associates.com
D 404.442.2843

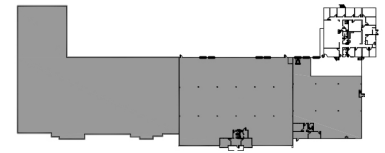
Tyler Flemming
tflemming@lee-associates.com
D 404.442.2855

lee-associates.com

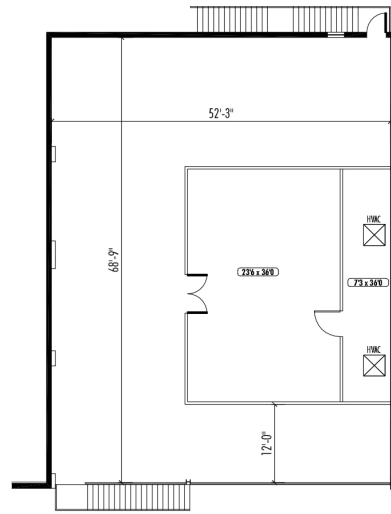
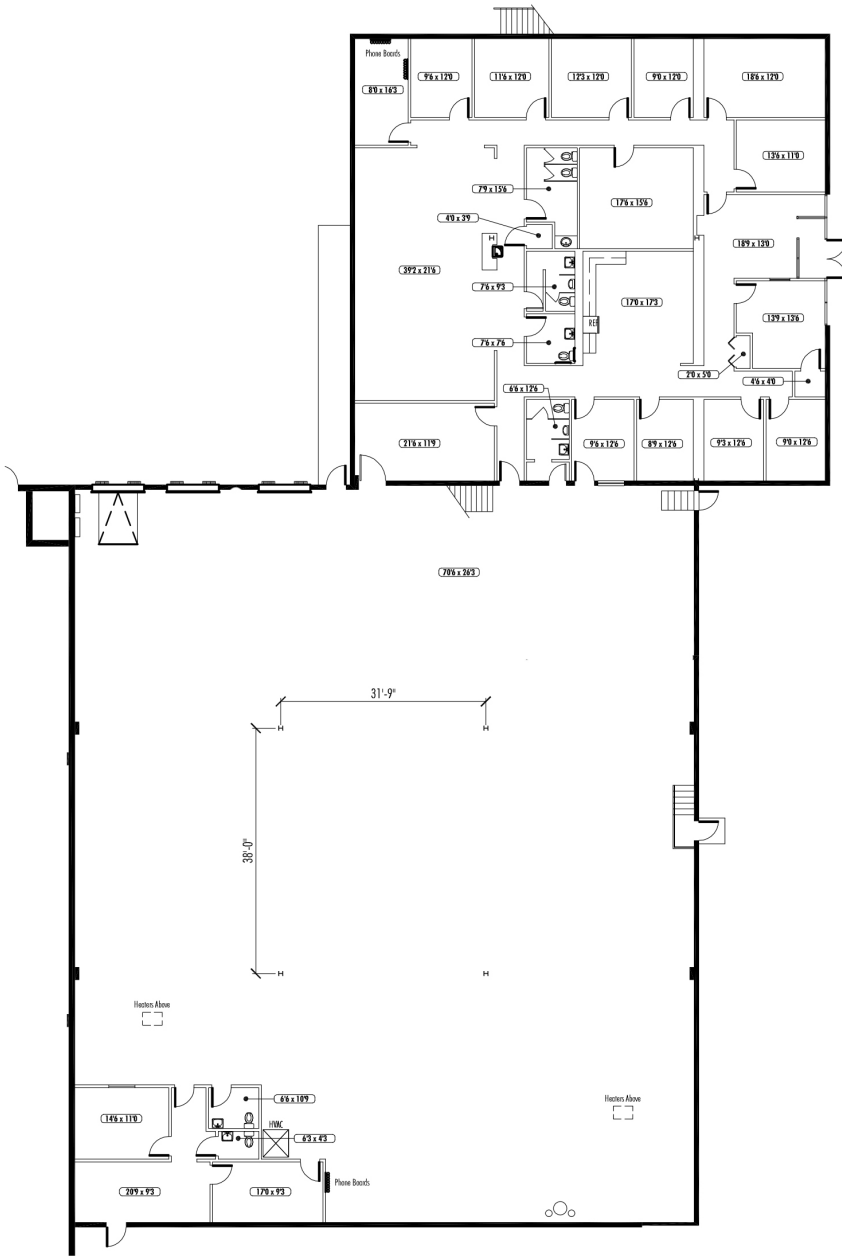


For Lease

Winters Chapel Business Center 4565-4567 Winters Chapel Road, Norcross, GA, 30092



KEY PLAN



As-Built Plan
Not to Scale



THE AVAILABLE SPACE SHOWN IS BELIEVED TO BE CORRECT, BUT IS SUBJECT TO CHANGE.

All information furnished regarding property for sale, rental or financing is from sources deemed reliable, but no warranty or representation is made to the accuracy thereof and same is submitted to errors, omissions, change of price, rental or other conditions prior to sale, lease or financing or withdrawal without notice. No liability of any kind is to be imposed on the broker herein.



For more information contact:

Craig Vieregger, SIOR

cvieregger@lee-associates.com

D 404.442.2843

Tyler Flemming

tflemming@lee-associates.com

D 404.442.2855

lee-associates.com

