

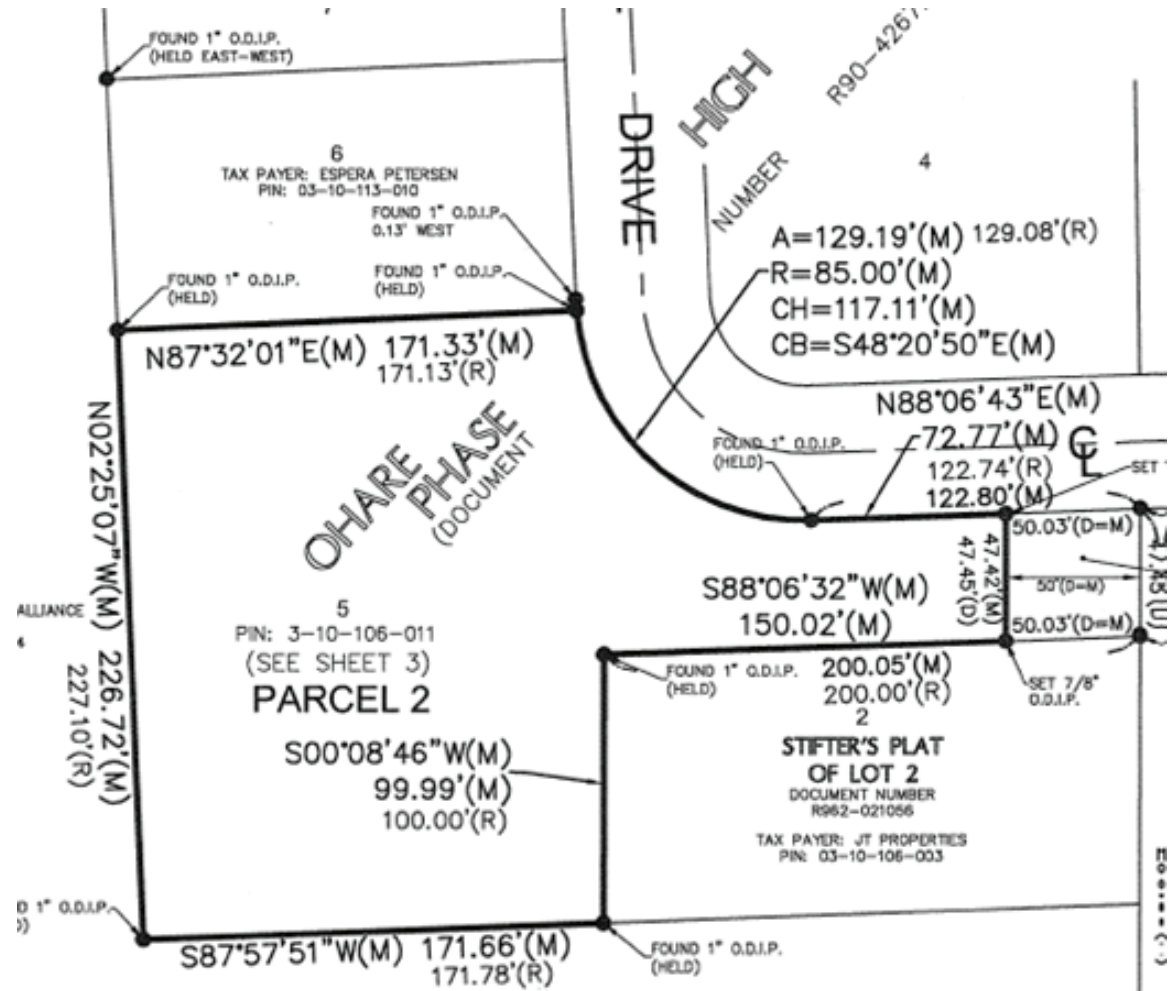
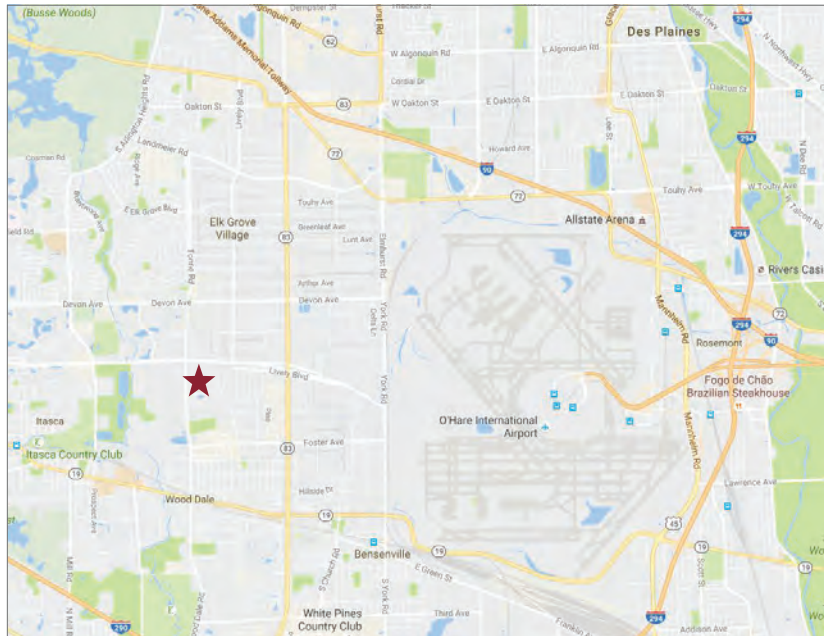
SE CORNER OF CREEL DR & BEINORIS DR

Wood Dale, Illinois – DuPage County

TRAILER PARKING
±1.104 Acres Available for Sale

PROPERTY SPECIFICATIONS:

Size:	±1.104 Acres / 48,109 SF
PIN:	03-10-113-011
Real Estate Taxes:	\$15,641.60 (2015 Actual)
Sale Price:	\$785,000 / \$16.32 PSF (land)
Comments:	<ul style="list-style-type: none"> › “In-place” zoning entitlement for Trailer Storage › Close proximity to future full interchange at I-390 & Wood Dale Road. › Trailer lot improvements include asphalt, dolly pad, lighting and fencing with electronic gate. › “In-place” rental income! › Can be purchased individually or as a part of a building package.



FOR MORE INFORMATION:

MICHAEL J. ANDROWICH, JR.
Vice President
(773) 355-3047 direct
mjandrowich@lee-associates.com

MICHAEL J. PLUMB
Principal
(773) 355-3019 direct
mplumb@lee-associates.com

SE CORNER OF CREEL DR & BEINORIS DR

Wood Dale, Illinois – DuPage County

TRAILER PARKING
±1.104 Acres Available for Sale



9450 W. BRYN MAWR AVENUE, SUITE 550
ROSEMONT, ILLINOIS 60018
MAIN | (773) 355-3000
WWW.LEE-ASSOCIATES.COM

FOR MORE INFORMATION:

MICHAEL J. ANDROWICH, JR.
Vice President
(773) 355-3047 direct
mjandrowich@lee-associates.com

MICHAEL J. PLUMB
Principal
(773) 355-3019 direct
mplumb@lee-associates.com

No warranty or representation is made as to the accuracy of the foregoing information. Terms of sale or lease and availability are subject to change or withdrawal without notice.