

FOR LEASE 2,908 SF

Comcast High-Speed Available!

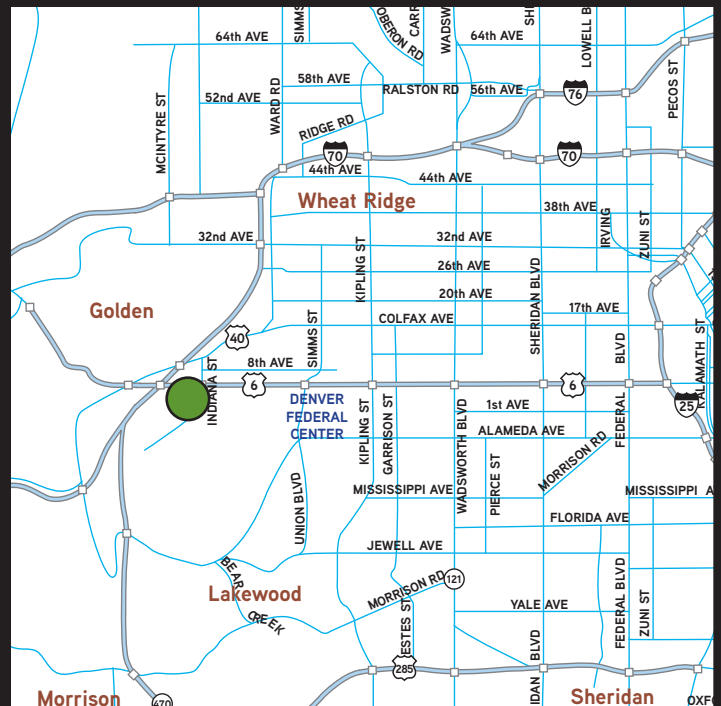
→ OVERVIEW

West Park Business Center is conveniently located at the south-west corner of West 6th Avenue and Indiana Street, the flexible building design allows for any combination of office, showroom and distribution uses. Only 15 minutes to downtown Denver.

→ PROPERTY STATISTICS

Available	Immediately
Available SF	2,908
Office SF	2,556
Warehouse SF	352
Base Rent	\$9.00/SF
2012 NNN	\$4.44/SF
Monthly Rent	\$3,256.96
Loading Dock	None
Drive-In Loading	One (1)
Drop Ceiling	14' - 0"
Parking Facilities	Unreserved, Surface
Power	200 Amp/3-Phase
Zoning	PUD
Taxes	Unincorporated Jefferson County

15000 W. 6th Ave., Unit 102
Golden, CO 80401



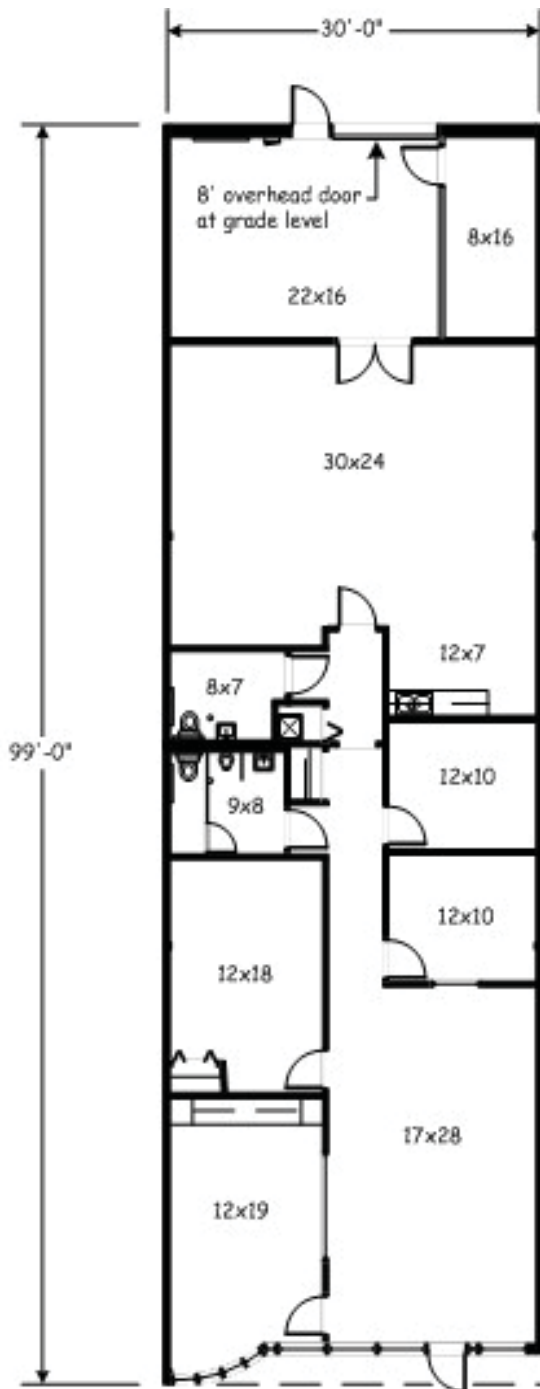
FIRST INDUSTRIAL REALTY TRUST

8200 Park Meadows Drive, Suite 8226, Lone Tree, CO 80124
T: (303) 220-5565 F: (303) 220-5585 www.firstindustrial.com



15000 W. 6th Ave., Unit 102
Golden, CO 80401

FOR LEASE 2,908 SF



→ CONTACT

Exclusive Agent:



T.J. Smith, SIOR
(303) 283-4576
tj.smith@colliers.com

COLLIERS INTERNATIONAL

4643 South Ulster Street
Suite 1000
Denver, Colorado 80237
303.745.5800
303.745.5888 fax
www.colliers.com

All information furnished regarding the property for sale, rental or financing is obtained from sources deemed reliable. No representation is made to the accuracy thereof and is submitted subject to errors, omissions, change of price rental or other conditions, prior sale, lease, or financing, or withdrawal without notice. First Industrial Realty Trust, Inc. represents the Seller in this transaction and as such owes all duties and obligations thereto.

FIRST INDUSTRIAL REALTY TRUST

8200 Park Meadows Drive, Suite 8226, Lone Tree, CO 80124
T: (303) 220-5565 F: (303) 220-5585 www.firstindustrial.com

