

INTRODUCING

# The RIVIERA

350 TECHNOLOGY DR. PITTSBURGH TECHNOLOGY  
**OAKLAND ON THE RIVER**

**160,200 RSF**



1st Floor Outdoor patio overlooking the river



class-g

## PROPERTY OVERVIEW

- A two building 310,000 sf campus
- The Riviera: 160,200 sf (six stories)
- Riviera 2.0: 150,000 sf (6 stories)
- Inside the PTC campus setting
- On-site Hotel Indigo and Eliza restaurant
- Sustainably Managed by Class-G
- Riverfront views of Downtown and Southside Marina
- Flexible floor plans
- Two Healthy Ride Bike Stations
- Direct access to Three Rivers Heritage Trail
- 5-minute commute to Downtown Pittsburgh
- Walkability to Southside Works amenities
- Proximity to Oakland's major universities
- Visible building signage
- Outdoor Patio, Onsite Cafe, and Onsite Fitness Center



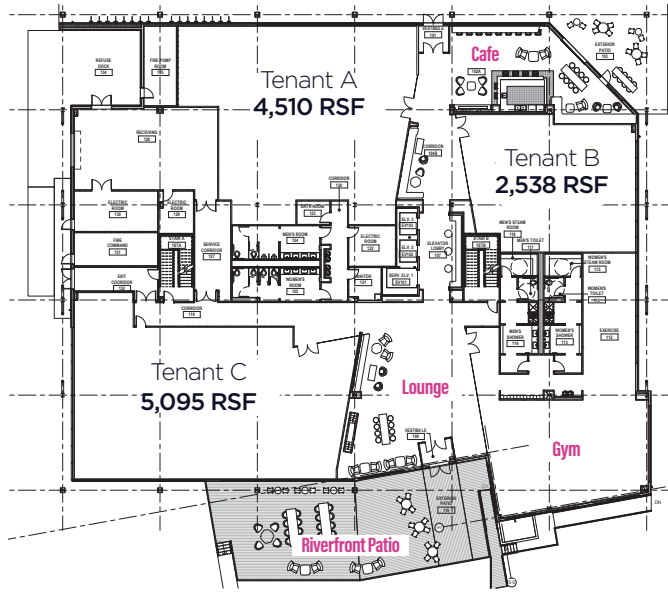
**SCOTT DIGUGLIELMO** - c. 724.984.6251 | [SDiguglielmo@BurnsScalo.com](mailto:SDiguglielmo@BurnsScalo.com)  
**VICTOR KONNO** - c. 724.622.2756 | [VKonno@burnscalos.com](mailto:VKonno@burnscalos.com)  
o. 412.250.3000 | [BurnsScaloRealEstate.com](http://BurnsScaloRealEstate.com)



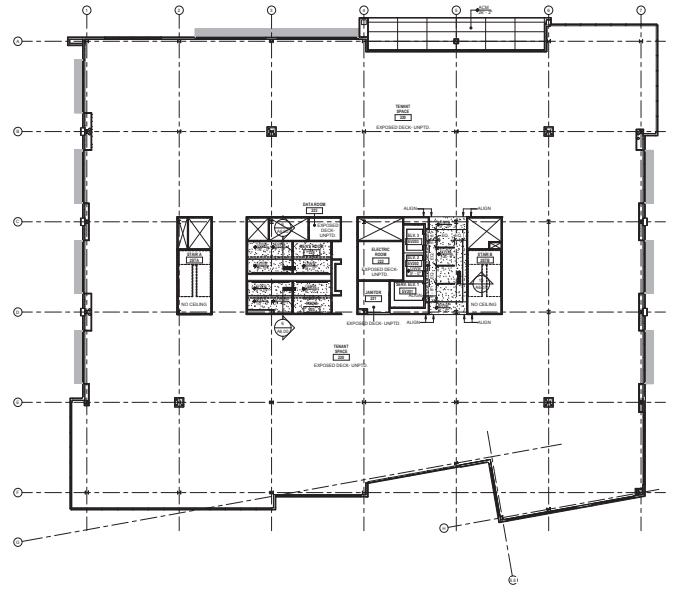
**SCOTT DIGUGLIELMO** - c. 724.984.6251 | SDiguglielmo@BurnsScalo.com  
**VICTOR KONNO** - c. 724.622.2756 | VKonno@burnsscalo.com  
o. 412.250.3000 | BurnScaloRealEstate.com

# The RIVIERA 160,200 RSF

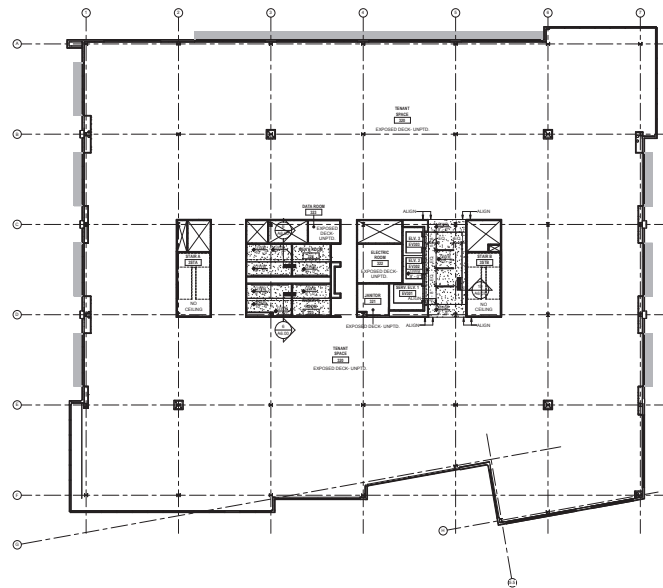
## 1st Floor 12,143 RSF



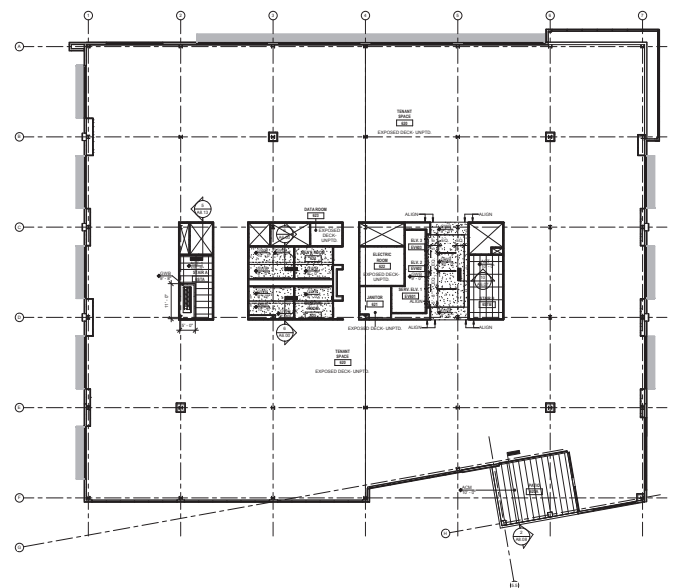
## 2nd Floor - 29,485 RSF



## 3rd - 5th Floor - 29,764 RSF



## 6th Floor - 29,280 RSF



# A Two Building Campus - 310,000 sf



# OAKLAND

Bates St.



Downtown



## The Riviera Shuttle

A complementary shuttle van will transport Riviera employees to and from the South Side Works on the hour. This amenity offers connectivity to retail, restaurants, living and additional parking.

Hofbräuhaus  
Pittsburgh

Hyatt House  
Pittsburgh-South Side

SouthSide Works Cinema

# SOUTHSIDE

Google  
Destinations