

858 Hinckley Rd

Burlingame, CA

±13,572
Flex-Building Available

±43,122 SF land

One-story building
(see attached floorplan)

Built in 1970

1,200 amps; 3 phase 4 wire;
480/277 volts

1 drive-in door

Parking lot easement

±66 parking spaces available

APN: 026-310-480

Close proximity to SFO and
Highway 101

Great local amenities

Great for school, shop or
training facility: formerly the
training facility for the Sheet
Metal Workers Union



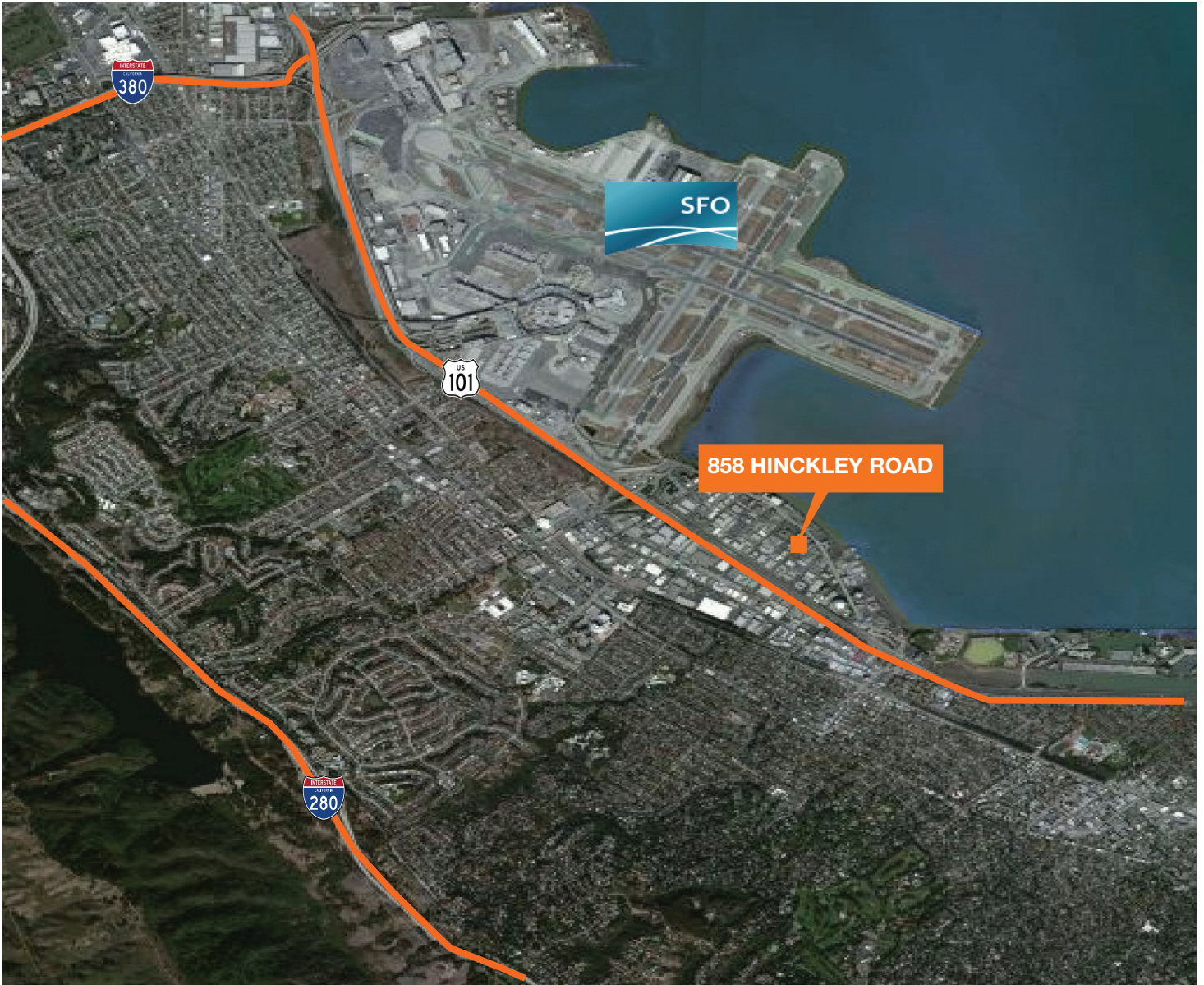
Asking price: \$6,000,000



Contact

Mark Melbye
Senior Vice President
650.769.3512
mmelbye@kiddermathews.com
LIC #01006214

858 Hinckley Road

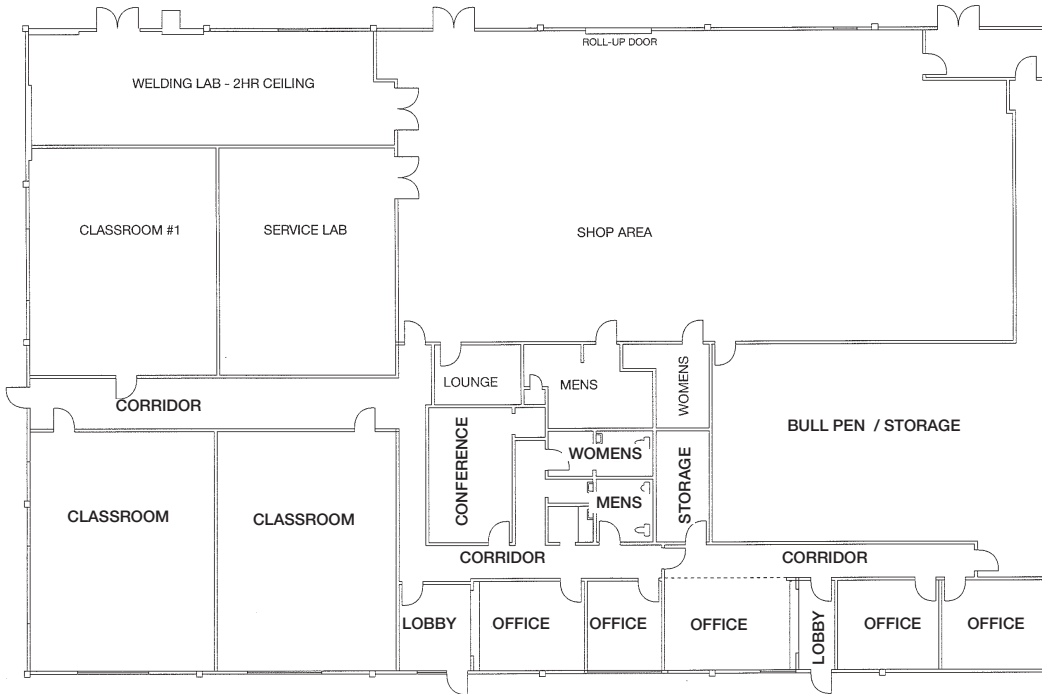


Contact

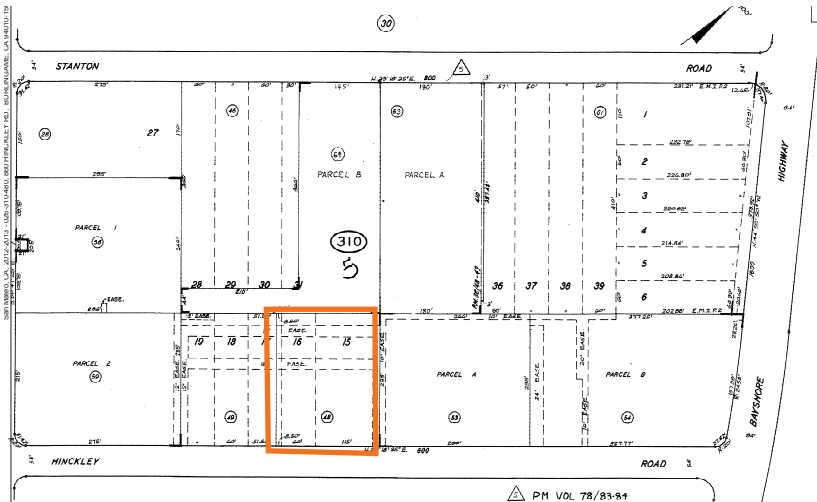
Mark Melbye
Senior Vice President
650.769.3512
mmelbye@kiddermathews.com
LIC #01006214

858 Hinckley Road

FLOORPLAN



TAX PARCEL MAP



Contact

Mark Melbye
 Senior Vice President
 650.769.3512
 mmelbye@kiddermathews.com
 LIC #01006214