



# 2001 GREENE STREET

Columbia, SC 29205

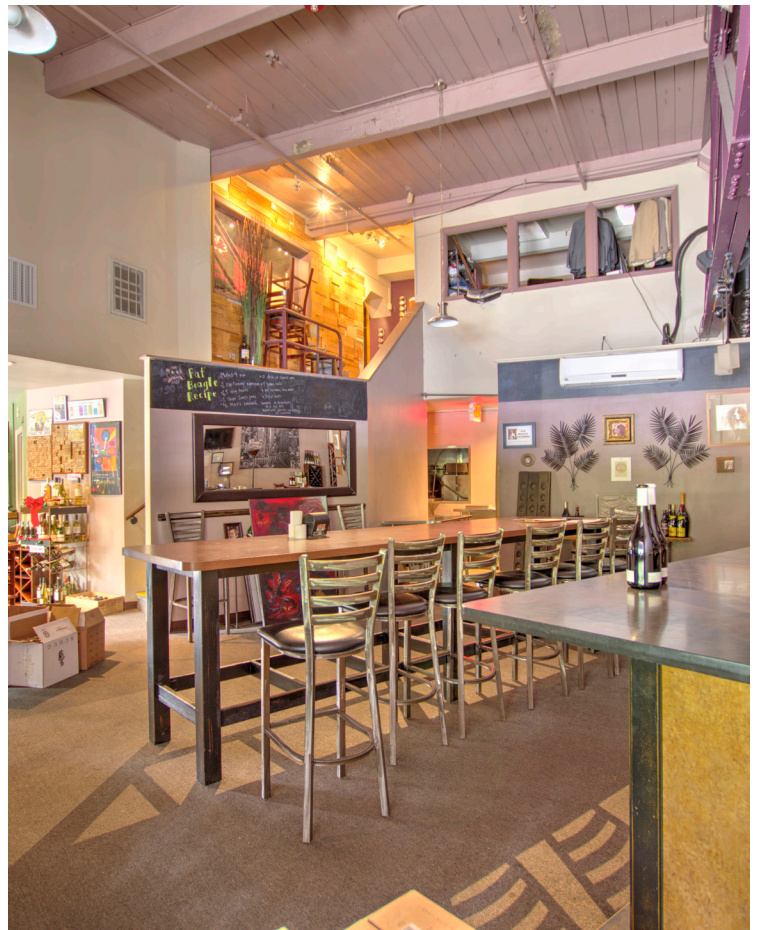
## FOR LEASE

UNIQUE MULTI-LEVEL FLOOR PLAN AT ICONIC FIVE POINTS LOCATION.

### ±2,650 SF AVAILABLE: Retail/Restaurant Space For Lease in Five Points

- Multi-level suite includes an expansive first floor with an open staircase leading to a second floor loft-style area
- Immediate neighbors include Mr. Friendly's New Southern Cafe, Cellar on the Greene and Andy's Deli
- Shared surface parking available to clientele

**LEASE RATE: \$22.50 PSF NNN**



## CONTACT

WILLIAM MILLS | Senior Brokerage Associate | [wmills@trinity-partners.com](mailto:wmills@trinity-partners.com) | 803-567-1794

**TRINITY  
PARTNERS**

TRINITY PARTNERS | 1556 MAIN STREET, SUITE 200 COLUMBIA, SC 29201 | [TRINITY-PARTNERS.COM](http://TRINITY-PARTNERS.COM)

The information contained herein was obtained from sources believed reliable; however, Trinity Partners makes no guarantees, warranties, or representations as to the completeness or accuracy thereof. The presentation of this property is submitted subject to errors, omissions, changes of price or conditions prior to sale or lease, or withdrawal without notice.



# 2001 GREEN STREET

COLUMBIA, SC 29205

## INTERIOR PHOTOS



## CONTACT

WILLIAM MILLS | Senior Brokerage Associate | [wmills@trinity-partners.com](mailto:wmills@trinity-partners.com) | 803-567-1794



TRINITY PARTNERS | 1556 MAIN STREET, SUITE 200 COLUMBIA, SC 29201 | [TRINITY-PARTNERS.COM](http://TRINITY-PARTNERS.COM)

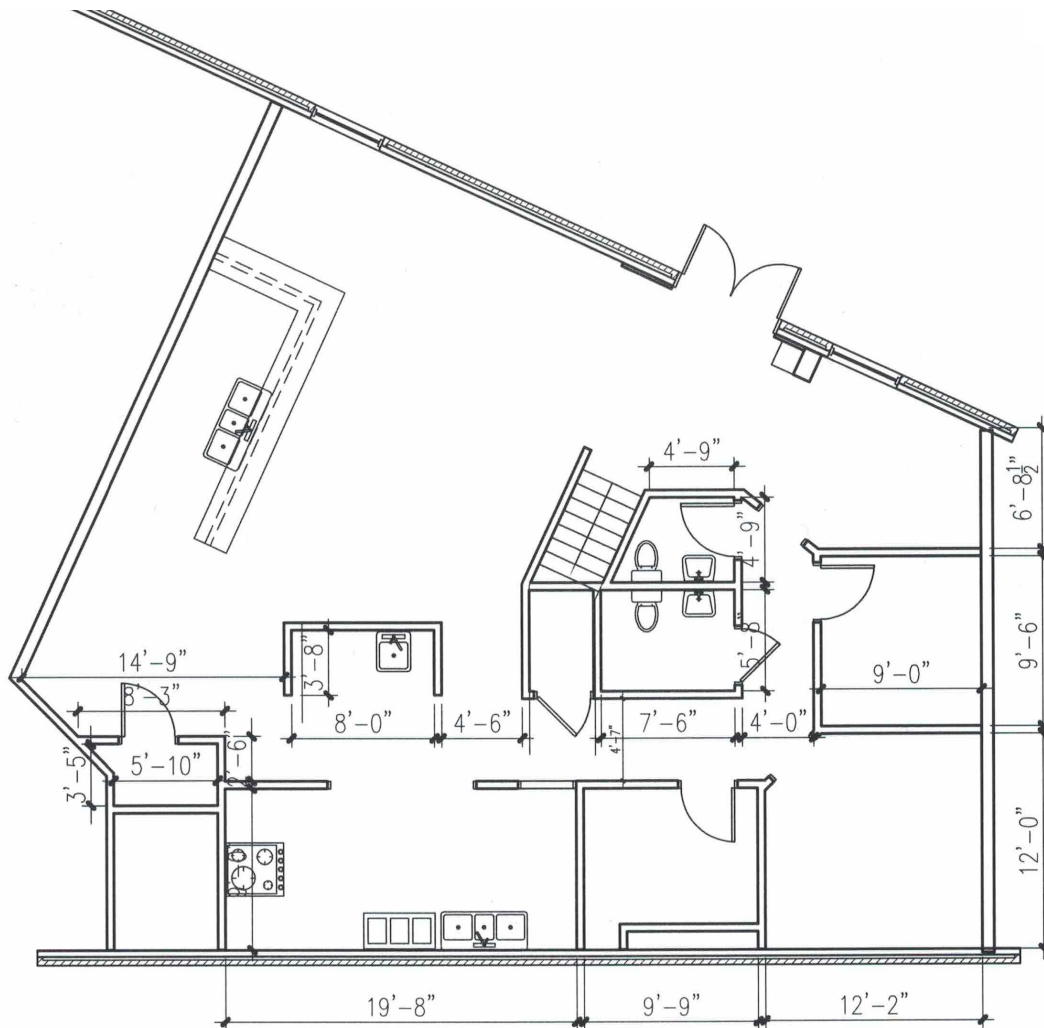
The information contained herein was obtained from sources believed reliable; however, Trinity Partners makes no guarantees, warranties, or representations as to the completeness or accuracy thereof. The presentation of this property is submitted subject to errors, omissions, changes of price or conditions prior to sale or lease, or withdrawal without notice.



# 2001 GREEN STREET

COLUMBIA, SC 29205

FIRST FLOOR | ±1,800 SF



## CONTACT

WILLIAM MILLS | Senior Brokerage Associate | [wmills@trinity-partners.com](mailto:wmills@trinity-partners.com) | 803-567-1794



TRINITY PARTNERS | 1556 MAIN STREET, SUITE 200 COLUMBIA, SC 29201 | [TRINITY-PARTNERS.COM](http://TRINITY-PARTNERS.COM)

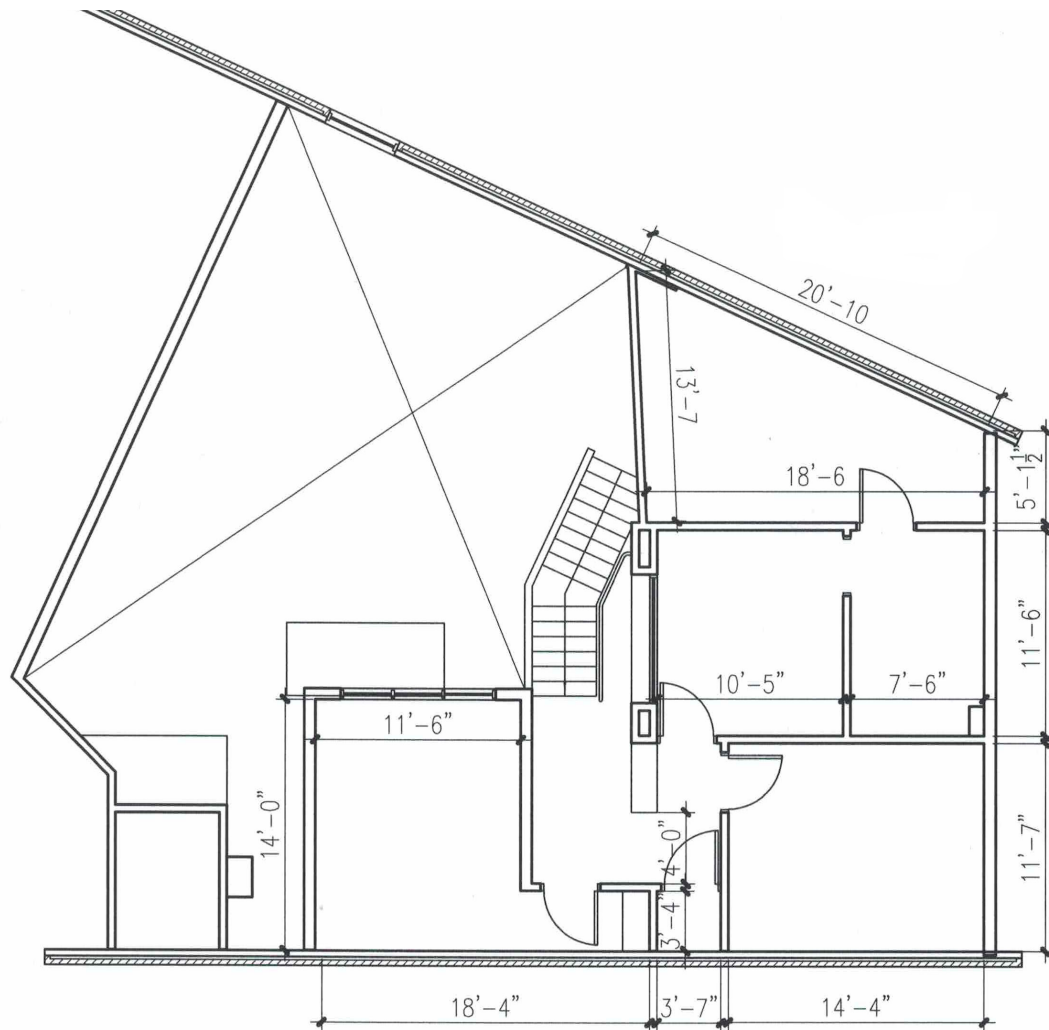
The information contained herein was obtained from sources believed reliable; however, Trinity Partners makes no guarantees, warranties, or representations as to the completeness or accuracy thereof. The presentation of this property is submitted subject to errors, omissions, changes of price or conditions prior to sale or lease, or withdrawal without notice.



# 2001 GREEN STREET

COLUMBIA, SC 29205

SECOND FLOOR |  $\pm 1,000$  SF



## CONTACT

WILLIAM MILLS | Senior Brokerage Associate | [wmills@trinity-partners.com](mailto:wmills@trinity-partners.com) | 803-567-1794



TRINITY PARTNERS | 1556 MAIN STREET, SUITE 200 COLUMBIA, SC 29201 | [TRINITY-PARTNERS.COM](http://TRINITY-PARTNERS.COM)

The information contained herein was obtained from sources believed reliable; however, Trinity Partners makes no guarantees, warranties, or representations as to the completeness or accuracy thereof. The presentation of this property is submitted subject to errors, omissions, changes of price or conditions prior to sale or lease, or withdrawal without notice.



# 2001 GREEN STREET

## COLUMBIA, SC 29205



### DEMOGRAPHICS

	2019 Average Household Income	Total Businesses	Total Employees	2019 Population Estimate	2010-2019 Population Growth	2019-2024 Population Growth
<b>1 Mile</b>	\$65,099	2,073	26,198	16,500	1.82%	2.64%
<b>3 Mile</b>	\$64,981	7,688	87,321	84,709	2.78%	6.28%
<b>5 Mile</b>	\$64,420	11,425	128,266	71,659	2.86%	5.54%

Data Source: Costar Analytics

### CONTACT



WILLIAM MILLS | Senior Brokerage Associate | [wmills@trinity-partners.com](mailto:wmills@trinity-partners.com) | 803-567-1794

TRINITY PARTNERS | 1556 MAIN STREET, SUITE 200 COLUMBIA, SC 29201 | [TRINITY-PARTNERS.COM](http://TRINITY-PARTNERS.COM)

The information contained herein was obtained from sources believed reliable; however, Trinity Partners makes no guarantees, warranties, or representations as to the completeness or accuracy thereof. The presentation of this property is submitted subject to errors, omissions, changes of price or conditions prior to sale or lease, or withdrawal without notice.