

**Is Your Current Lease  
Due to Expire in the Next 18 Months??**

6235 GRAND RIVER AVE.  
BRIGHTON, MI

**CLASS  
"A"  
SPACE**

# Chestnut Landing

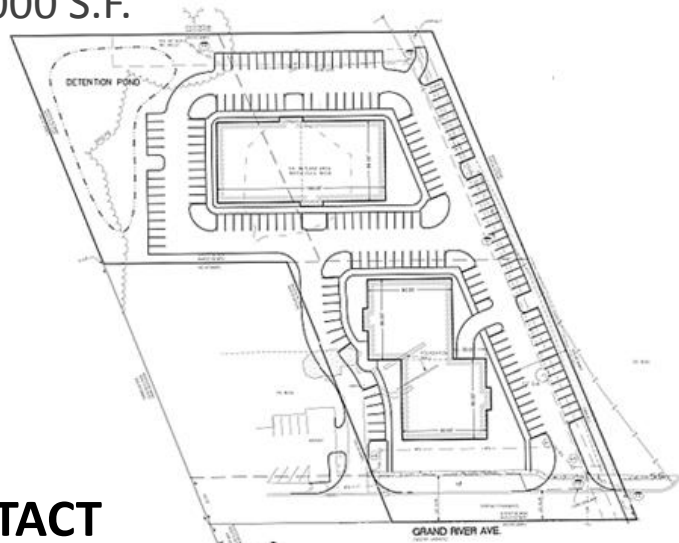
MEDICAL / PROFESSIONAL PLAZA

- PROJECT CURRENTLY IN PROGRESS
- OCCUPANCY SUMMER 2016
- SUITES FROM 2,000 S.F to 30,000 S.F.

**BEST RATES IN  
LIVINGSTON  
COUNTY**



CONTACT  
**Steve Gronow**  
[ChestnutLanding.com](http://ChestnutLanding.com)



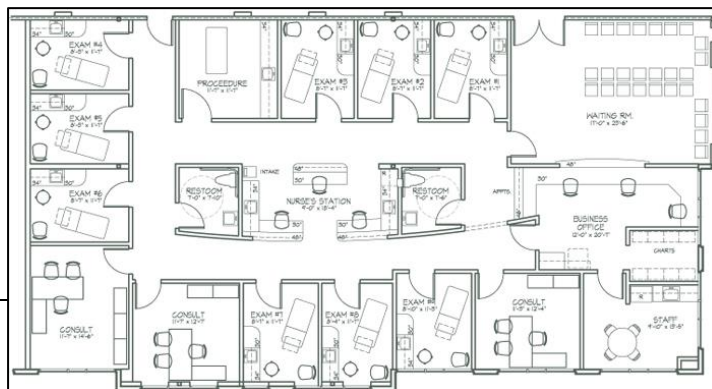
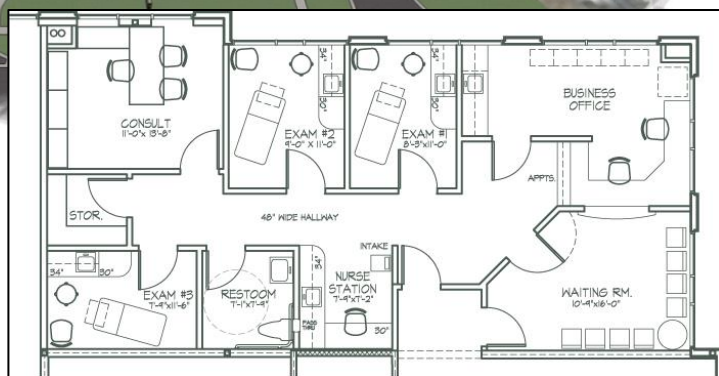
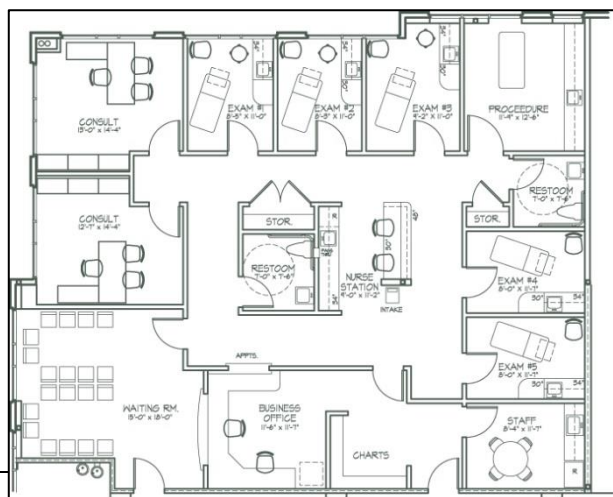
**Now Leasing (810) 599-5147**

# Build to Suit Suites

MEDICAL / PROFESSIONAL PLAZA

- \$18 PSF + CAMS
- \$25 PSF BUILDOUT ALLOWANCE
- LOCAL OWNER/BUILDER

## Sample Build-out



**CONTACT**

**Steve Gronow**  
BUILDER/BROKER



**Now Leasing (810) 599-5147**