

For Lease

Heaven III

7,167 SF | \$14.00 / SF



6925 Lake Ellenor Drive

Orlando, Florida 32809

Property Highlights

- 109,344 SF, 6 building office park
- Perfect for growing companies
- Ready to go office suites
- Competitive rental rates
- Parking - 3.8/1000
- Property management on site
- Easy access to Sand Lake Road, John Young Parkway, Turnpike and I-4
- Close to restaurants and shopping
- Owner willing to provide tenant improvements

5% Co-broker Commission for Qualified Leases through December 31, 2019

Lease Rate: \$14.00 / SF (MG)

OFFERING SUMMARY

Available SF	7,167 SF
Lease Rate	\$14.00 / SF (MG)
Lot Size	8.8 Acres
Building Size	109,344 SF



For more information

Chris Adams

O: 407 949 0731
cadams@realvest.com

Tom R. Kelley II, CCIM

O: 407 949 0715
tkelley@realvest.com

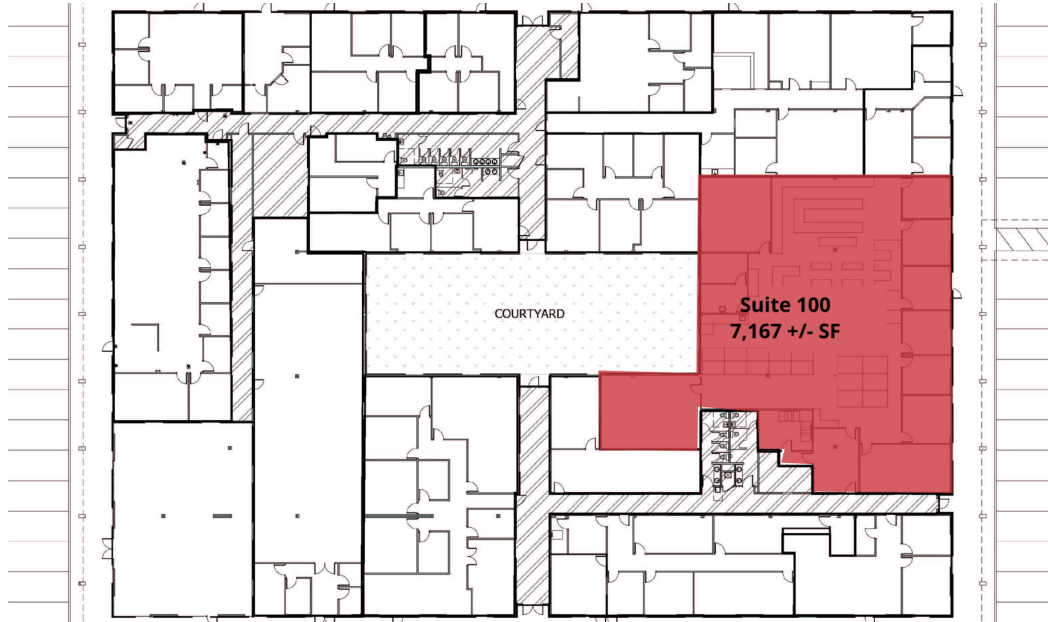
Available Spaces

LEASE TYPE | MG

TOTAL SPACE | 7,167 SF

LEASE TERM | Negotiable

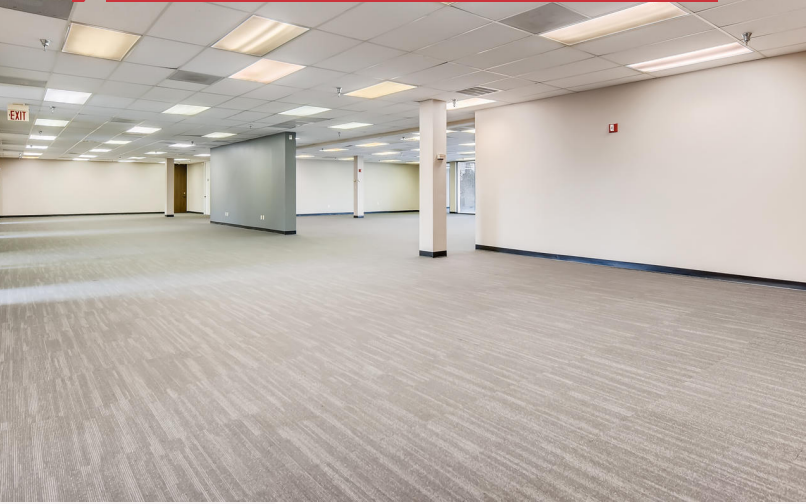
LEASE RATE | \$14.00 SF/yr



AVAILABLE

SUITE	TENANT	SIZE	TYPE	RATE	DESCRIPTION
Suite 100	Available	7,167 SF	Modified Gross	\$14.00 SF/yr	net of janitorial

Building 1 Photos



Building 2 Photos

