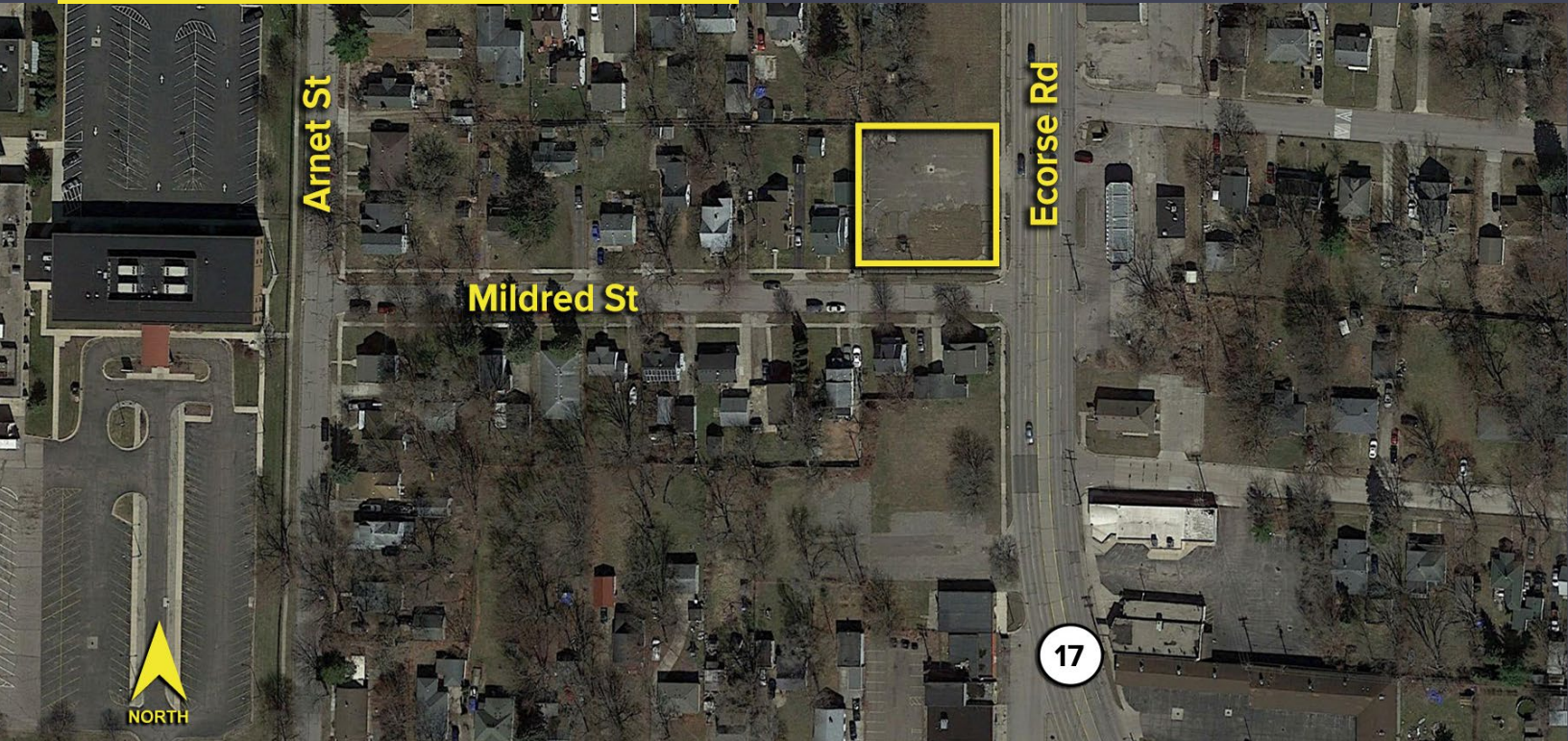


210 ECORSE ROAD
YPSILANTI TWP., MICHIGAN

VACANT LAND FOR SALE
0.39 Acre Available

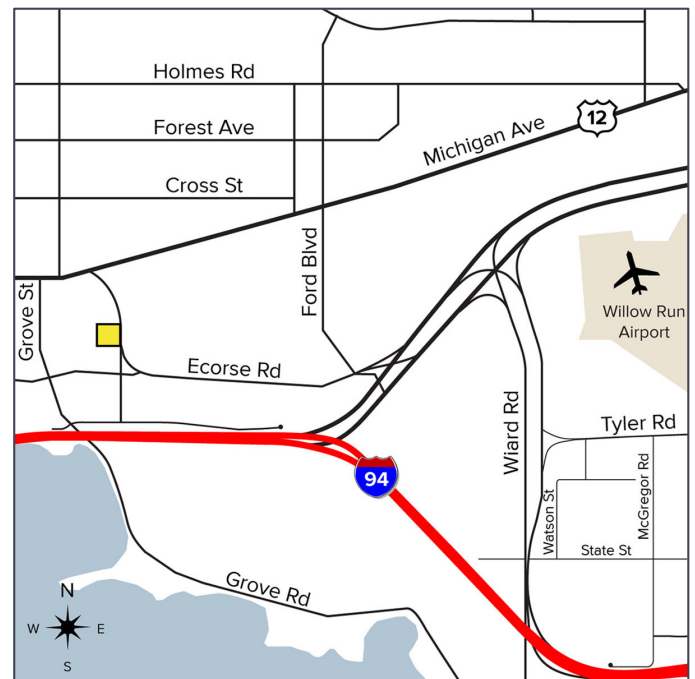


**SIGNATURE
ASSOCIATES**
KNOW SIGNATURE | KNOW RESULTS



PROPERTY FEATURES

- 0.39 acres available
- Zoned Commercial
- Unique opportunity to purchase 0.39 acre of vacant land located on Ecorse Road south of Michigan Avenue near General Pediatric at Ypsilanti Health Center
- Surrounded by many local and national retailers
- Excellent development opportunity for retail, automotive, restaurant and more
- Sale price: \$100,000



For more information, please contact:

MARVIN PETROUS
(248) 359 0647
mpetrous@signatureassociates.com

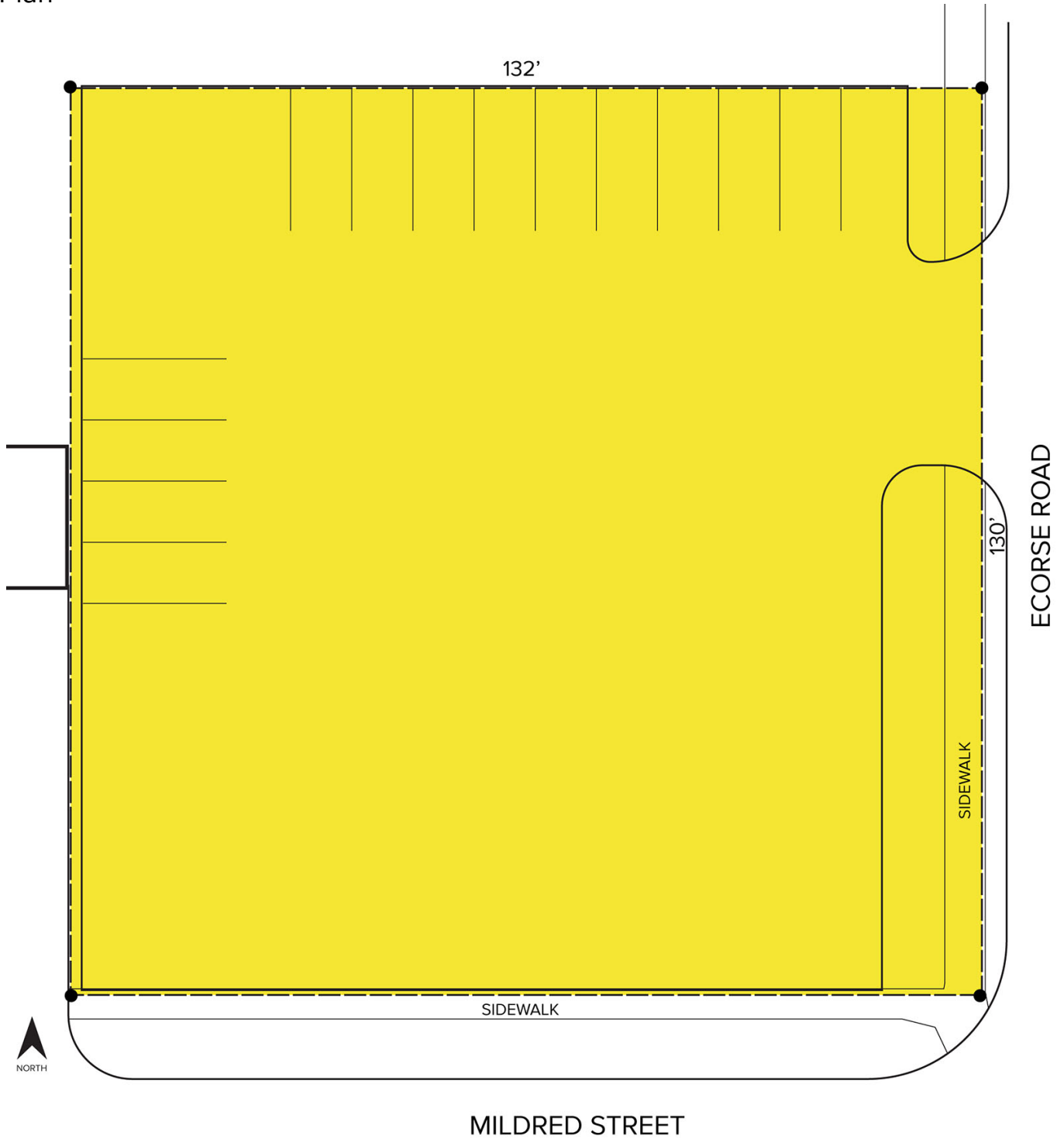
SIGNATURE ASSOCIATES
One Towne Square, Suite 1200
Southfield, MI 48076
www.signatureassociates.com

210 Ecorse Road – Ypsilanti Twp., Michigan

Land For Sale

0.39
Acre
AVAILABLE

Site Plan



For more information, please contact:

MARVIN PETROUS

(248) 359 0647

mpetrous@signatureassociates.com

SIGNATURE ASSOCIATES

One Towne Square, Suite 1200

Southfield, MI 48076

www.signatureassociates.com

Information is subject to verification and no liability for errors or omissions is assumed. Price is subject to change and listing withdrawal.