

Baldwin East Medical/Professional Office

874 RSF Available



Property Highlights

- 1320 North Semoran Blvd. Suite 109, Orlando, FL 32807
- Semoran Boulevard Monument Signage Available (Approx. 50,000 cars per day)
- Ample Parking Available
- Excellent Access, adjacent to SR 408, SR 417 and SR 50.
- Close proximity to Orlando International Airport and Downtown Orlando
- Full Service Lease, Janitorial Included
- Professionally Managed
- Onsite Ownership

For Information Contact:

Faith Pamplin, Mike Fess, or Gabriela Ferreira

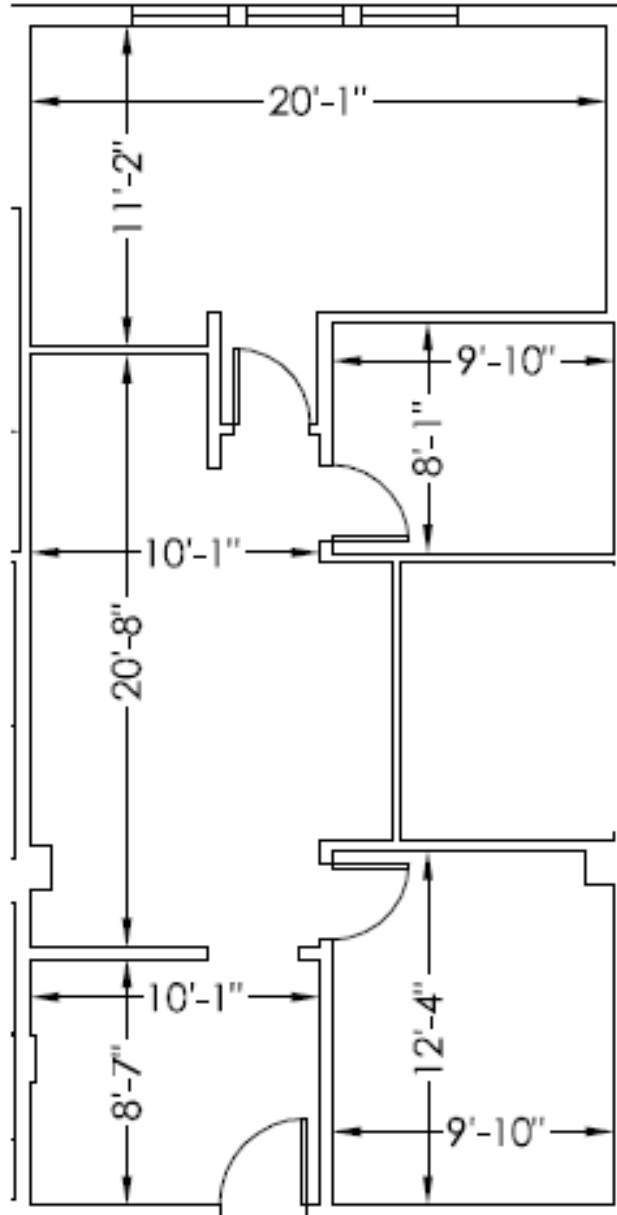
1300 N Semoran Blvd. – Suite 225, Orlando, FL 32807

Office: 407.660.4949 | Fax: 407.660.4995

faithpamplin@equitypartners.net, mikefess@equitypartners.net,
gabrielaferreira@equitypartners.net

Baldwin East Medical/Professional Office

874 RSF Available



For Information Contact:

Faith Pamplin, Mike Fess, or Gabriela Ferreira

1300 N Semoran Blvd. – Suite 225, Orlando, FL 32807

Office: 407.660.4949 | Fax: 407.660.4995

faithpamplin@equitypartners.net, mikefess@equitypartners.net,
gabrielaferreira@equitypartners.net