

STA. RITA HILLS LAND FOR SALE

5200 E Highway 246, Lompoc, CA 93436



PROPERTY INFORMATION

PROPERTY TYPE:	Land
SIZE:	18.72 Acres
SALE PRICE:	\$850,000
APN:	099-160-073
ZONING:	100- AG
AVAILABLE:	Now



PROPERTY OVERVIEW

Flat usable parcel on Highway 246 in the Santa Rita Hills A.V.A. Santa Rita Hills area with recorded certificate of compliance.

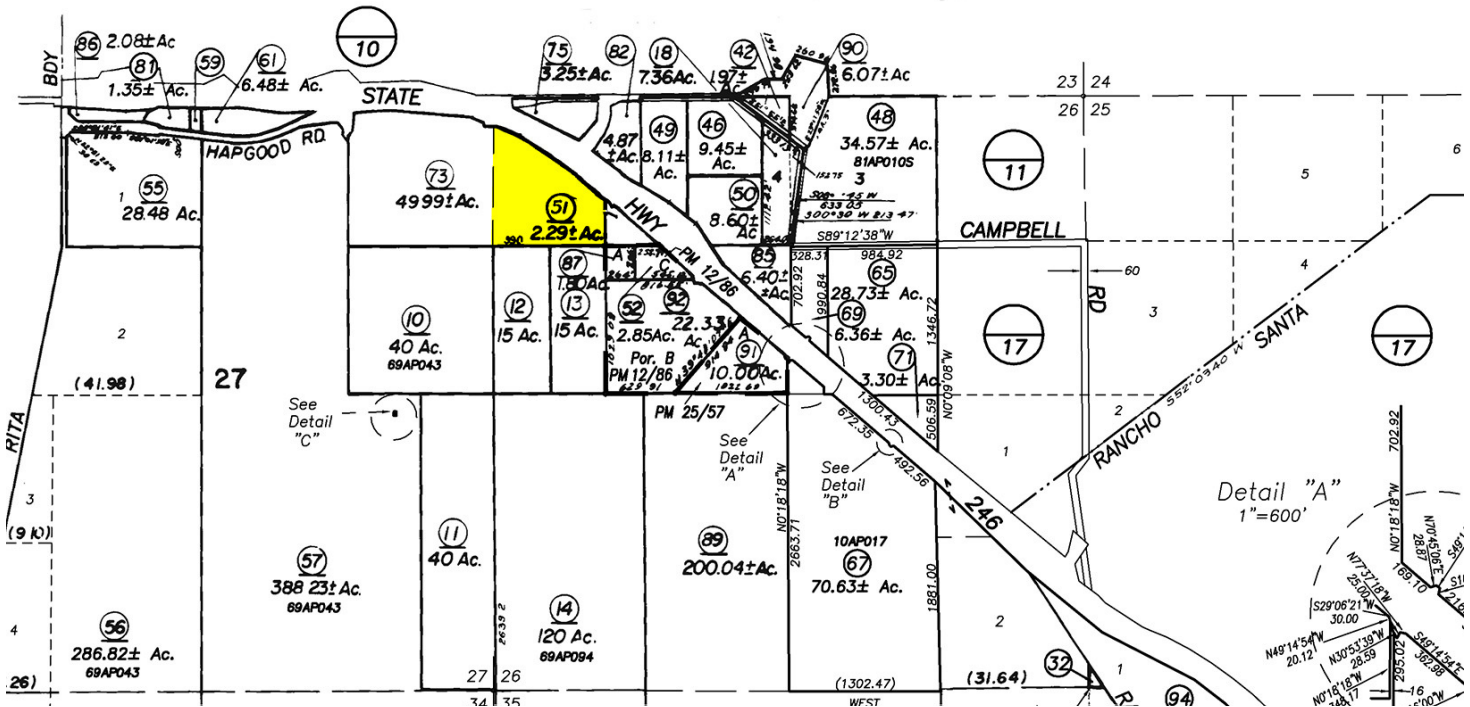
Tom Davidson
tdavidson@lee-associates.com
D 805.588.7777
CalLic. #00595846

All information furnished regarding property for sale, rental or financing is from sources deemed reliable, but no warranty or representation is made to the accuracy thereof and same is submitted to errors, omissions, change of price, rental or other conditions prior to sale, lease or financing or withdrawal without notice.
No liability of any kind is to be imposed on the broker herein.

STA. RITA HILLS LAND FOR SALE

5200 E Highway 246, Lompoc, CA 93436

LEE & ASSOCIATES
COMMERCIAL REAL ESTATE SERVICES



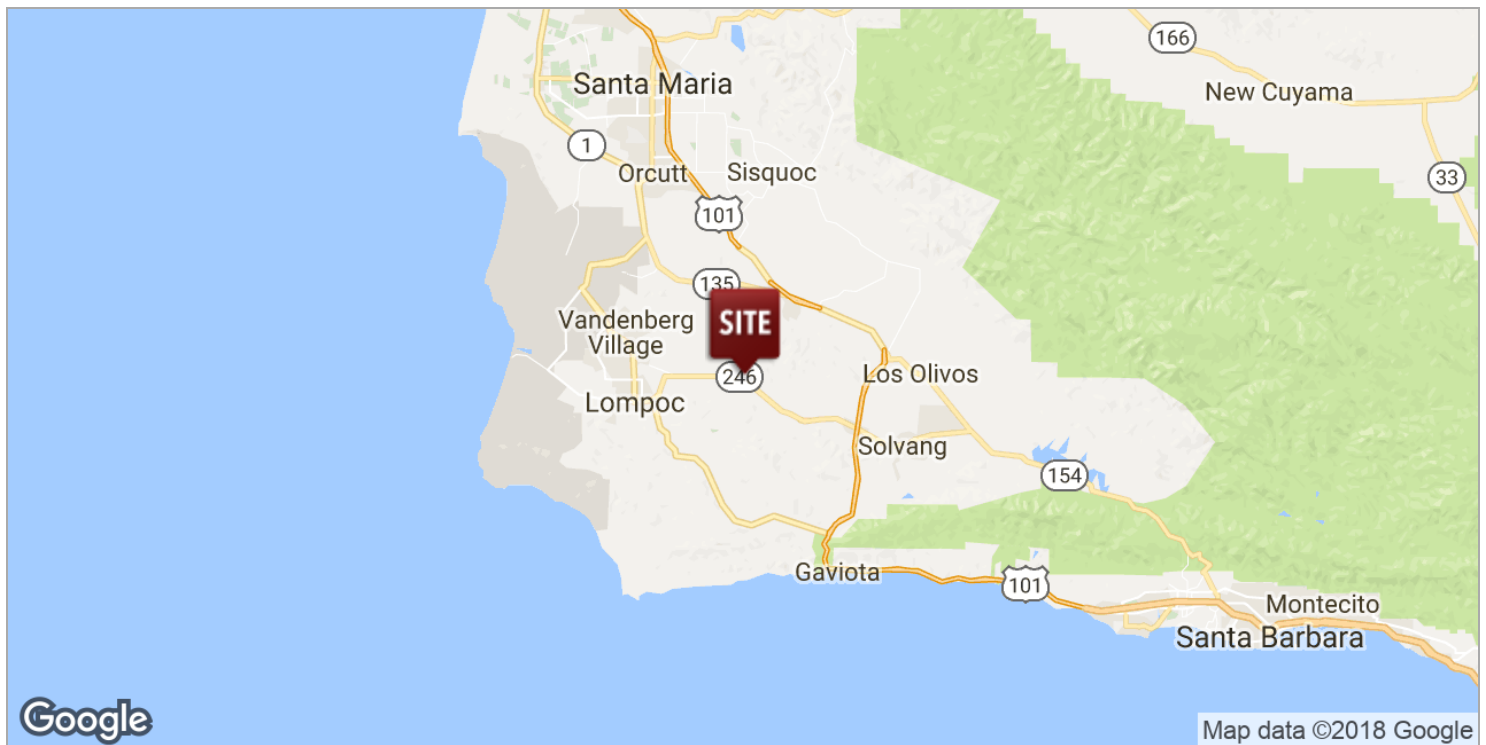
Tom Davidson
tdavidson@lee-associates.com
D 805.588.7777
CalLic. #00595846

All information furnished regarding property for sale, rental or financing is from sources deemed reliable, but no warranty or representation is made to the accuracy thereof and same is submitted to errors, omissions, change of price, rental or other conditions prior to sale, lease or financing or withdrawal without notice.
No liability of any kind is to be imposed on the broker herein.

STA. RITA HILLS LAND FOR SALE

5200 E Highway 246, Lompoc, CA 93436

LEE & ASSOCIATES
COMMERCIAL REAL ESTATE SERVICES



Tom Davidson
tdavidson@lee-associates.com
D 805.588.7777
CalLic. #00595846

All information furnished regarding property for sale, rental or financing is from sources deemed reliable, but no warranty or representation is made to the accuracy thereof and same is submitted to errors, omissions, change of price, rental or other conditions prior to sale, lease or financing or withdrawal without notice.
No liability of any kind is to be imposed on the broker herein.