

Publix #1454 - Westlake Commons

1700 Sheridan Street
Hollywood, FL 33020
Lat 26.034, Long -80.142

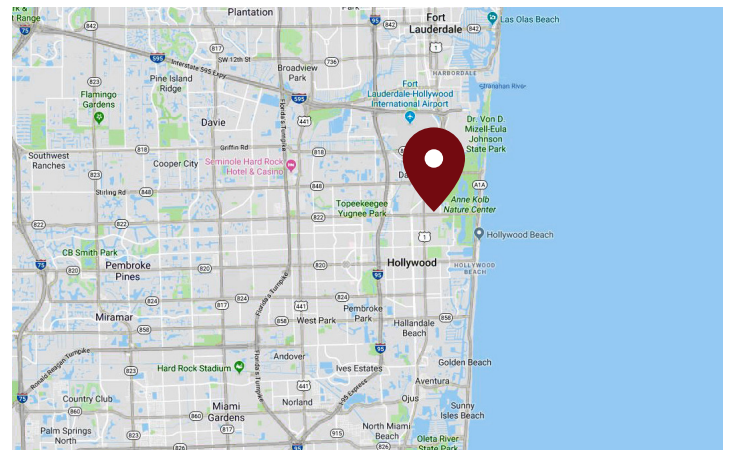
FOR LEASE



1,098 SF AVAILABLE

PROPERTY HIGHLIGHTS

- Extra Large Floorplan Publix Store in Busy Hollywood Market
- Excellent Visibility from Sheridan Street
- Minutes away from Hollywood Beach, Westlake
- Park, Young Circle, and Downtown Fort Lauderdale
- Five-Minute Drive from Interstate-95 East
- Combined Traffic Count: 60,000 VPD



DEMOGRAPHICS	1 Mile	3 Miles	5 Miles
Total Population	19,373	114,397	258,914
Daytime Population	17,578	117,571	286,797
Total Households	9,361	52,118	112,218
Avg. HH Income	\$66,485	\$74,334	\$78,379

Data provided by Placer Labs Inc. (www.placer.ai) & Esri

Fernando Espino

Office: 305.342.4629 | Cell: 305.632.1809 | fespino@crossmanco.com
2655 South Le Jeune Road, Suite 908, Miami, FL

Licensed Real Estate Broker. No warranty expressed or implied has been made to the accuracy of the information provided herein, no liability assumed for error or omission.



www.crossmanco.com

Publix #1454 - Westlake Commons

1700 Sheridan Street
 Hollywood, FL 33020
 Lat 26.034, Long -80.142

SITE PLAN



Suite	Tenant	Size
ANC	Publix	53,785
A-100	Starbucks	1,802
A-101	Great Clips	1,116
A-102/104	Banfield Pet Hospital	3,348
A-105/106	Chipotle	2,363
B-100	Publix Liquors	1,500
B-101/102	TLC Dental	2,400
B-103	The UPS Store	1,500
C-100	AMC Medical	1,500
C-102	Chiropractor	1,131
C-103	China Wok	1,084
C-104	AVAILABLE	1,098
C-105/106	Space Coast Credit Union	2,292
C-107/108	Massage Envy	2,277
C-109/110	Organic Nail Bar	2,631
OP1	Wells Fargo	
OP2	Memorial Health	
OP3	Pollo Tropical	
OP4	Chase Bank	

TOTAL 79,827



Fernando Espino

Office: 305.342.4629 | Cell: 305.632.1809 | fespino@crossmanco.com
 2655 South Le Jeune Road, Suite 908, Miami, FL

Licensed Real Estate Broker. No warranty expressed or implied has been made to the accuracy of the information provided herein, no liability assumed for error or omission.



www.crossmanco.com

Publix #1454 - Westlake Commons

1700 Sheridan Street
Hollywood, FL 33020
Lat 26.034, Long -80.142

FOOT TRAFFIC OVERVIEW

EST. # OF CUSTOMERS ANNUALLY

 **206,200**

EST. # OF VISITS ANNUALLY

 **883,500**

AVG. VISITS / CUSTOMER

 **4.28**

AVG. LENGTH-OF-STAY / VISIT

 **36 MIN**

TOP 3 DAYS



Saturday	140,457
Friday	138,374
Sunday	130,761

OF VISITS

TOP 3 HOURS

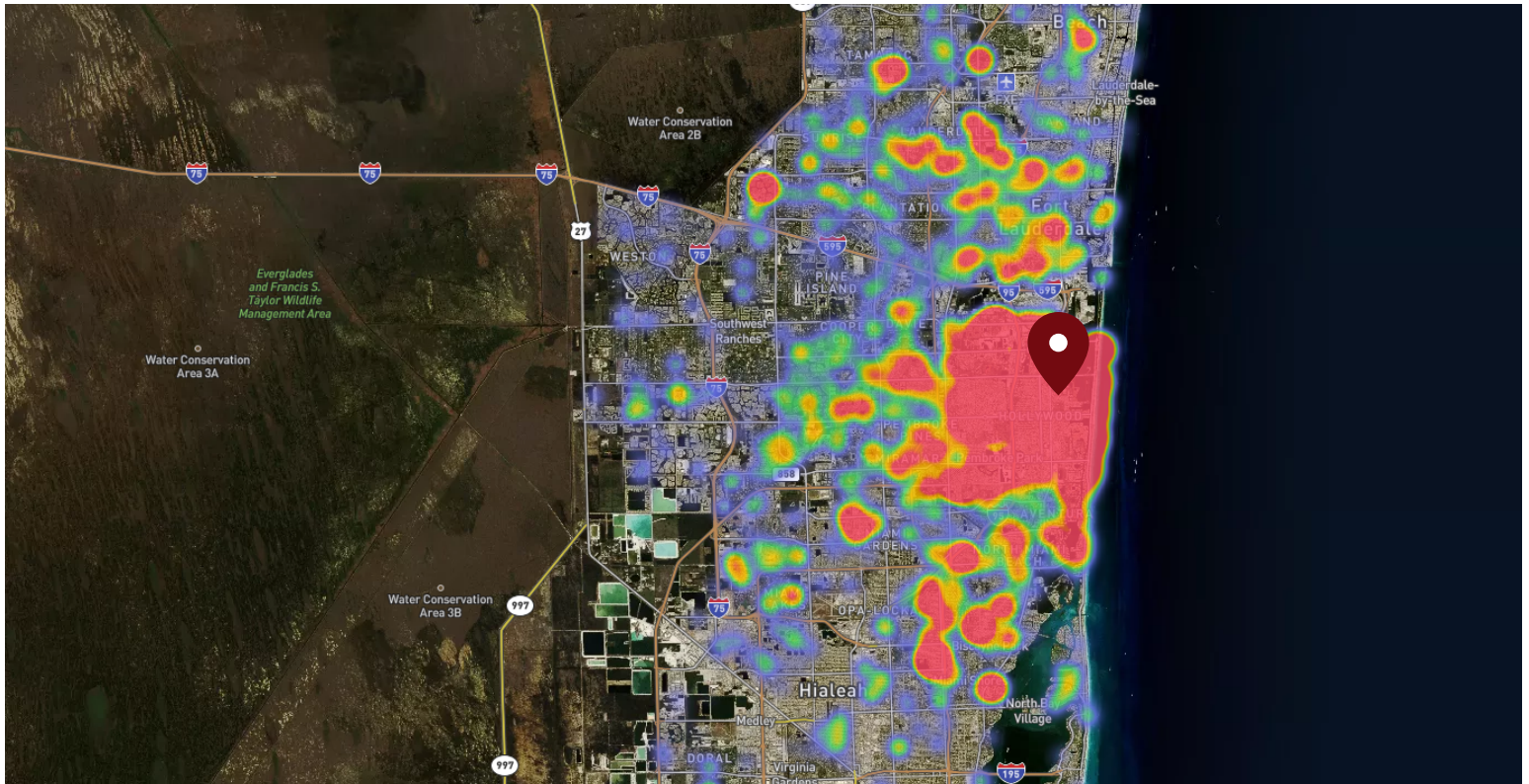


4-5 PM	135,354
5-6 PM	133,667
12-1 PM	128,188

OF VISITS

Data provided by Placer Labs Inc. (www.placer.ai) Dec 1, 2019 - Nov 30, 2020

SITE VISIT DENSITY



Red, orange, and yellow colors represent the location of 60% of site visitors

Data provided by Placer Labs Inc. (www.placer.ai)

Fernando Espino

Office: 305.342.4629 | Cell: 305.632.1809 | fespino@crossmanco.com
2655 South Le Jeune Road, Suite 908, Miami, FL

Licensed Real Estate Broker. No warranty expressed or implied has been made to the accuracy of the information provided herein, no liability assumed for error or omission.



Crossman & Company

www.crossmanco.com