

ALGONQUIN COMMONS



RETAIL & RESTAURANT
OPPORTUNITIES

SWC Randall Rd & County Line Rd / Algonquin, IL



RETAIL OPPORTUNITY

ALGONQUIN COMMONS



Address

SWC Randall Road
& County Line Road
Algonquin, IL

Features

- Algonquin Commons is a premier lifestyle center serving Chicago's far northwestern suburbs, providing visitors the ultimate shopping and dining experience
- Retail and restaurant opportunities currently available ranging from 1,115 to ±29,088 SF

Availability

1,115–±29,088 SF

Demographics

| | 5 Miles | 7 Miles | 10 Miles |
|----------------------|-----------|-----------|-----------|
| POPULATION | 155,014 | 240,571 | 397,535 |
| HOUSEHOLDS | 51,550 | 83,412 | 135,273 |
| AVG HOUSEHOLD INCOME | \$116,763 | \$113,319 | \$113,643 |
| DAYTIME POPULATION | 135,548 | 227,892 | 383,489 |

Co-Tenants

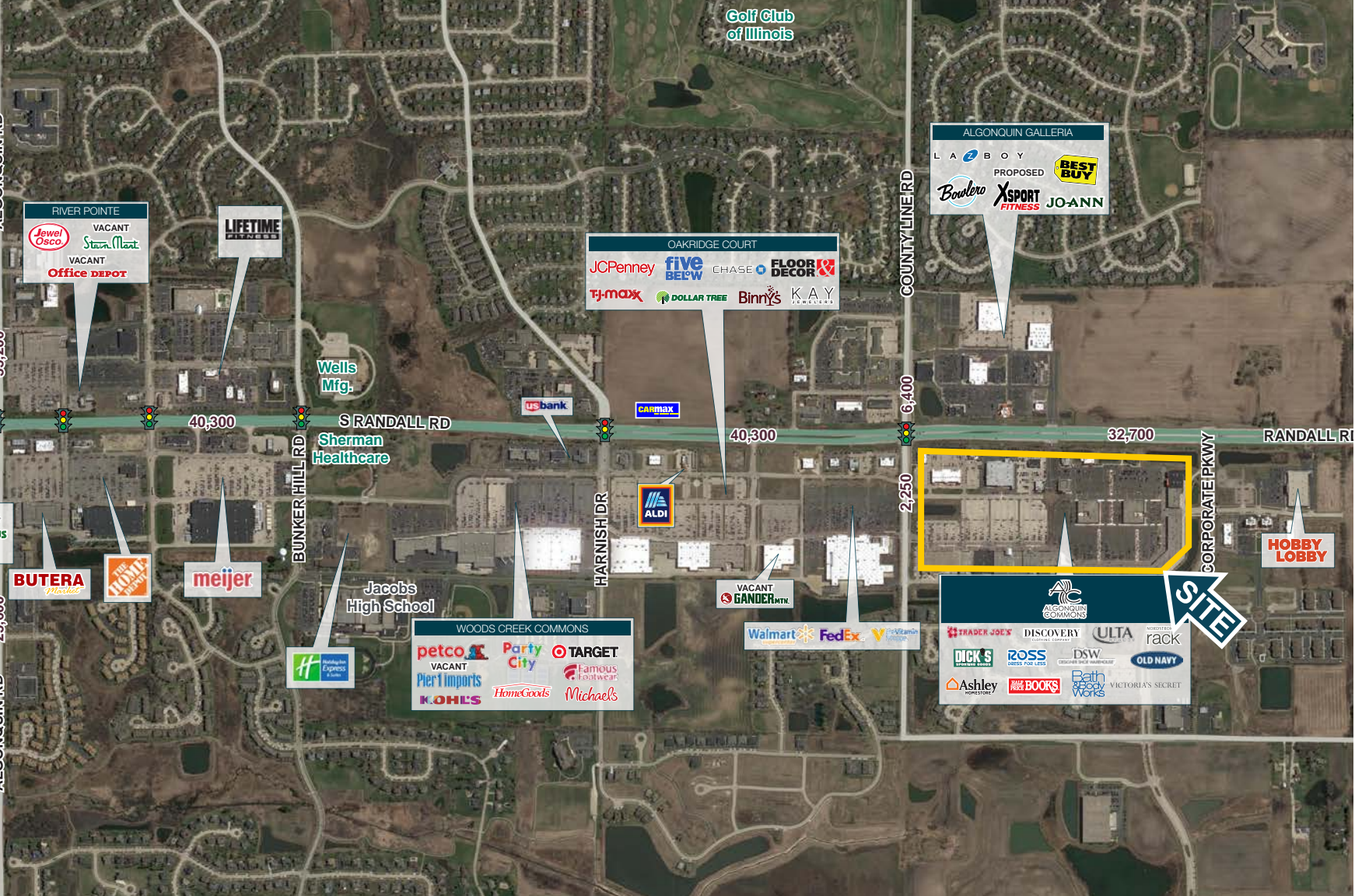


ALGONQUIN COMMONS



| Suite | Tenant | SF | Suite | Tenant | SF | Suite | Tenant | SF | Suite | Tenant | SF | Suite | Tenant | SF |
|-------|-------------------------------|--------|-------|-------------------------------|-------|-------|------------------------|--------|-------|-----------------------|--------|-------|---------------------------|--------|
| 1 | Jared the Galleria of Jewelry | 5,608 | 15 | Available | 1,500 | 31 | Available | 1,788 | 45 | Available | 2,500 | 59 | Aveda | 2,640 |
| 2 | The Tile Shop | 10,050 | 16 | Available | 1,201 | 32 | Orangetheory Fitness | 2,361 | 46 | Available | 4,150 | 60 | Maurice's | 5,400 |
| 3 | On the Border | 6,032 | 17 | Jiang's Mongolian & Japanese | 3,625 | 33 | Available | 1,201 | 47 | Available | 6,000 | 61 | Available | 4,600 |
| 4 | Bulldog Ale House | 8,824 | 18 | Available | 2,039 | 34 | Orangetheory Fitness | 1,433 | 48 | Pottery Barn | 10,800 | 62 | Bath & Body Works | 3,270 |
| 5 | Biaggi's | 8,325 | 19 | Available | 2,029 | 35 | Ta Wan Thai Restaurant | 1,800 | 49 | Available | 6,600 | 63 | Express | 7,560 |
| 6 | Half Price Books | 9,969 | 20 | Porto's Peri Peri | 2,400 | 36 | Sylvan Learning Center | 1,640 | 50 | Available | 2,000 | 64 | Francesca's | 2,000 |
| 7 | Available | 6,200 | 21 | Available | 6,480 | 37 | Available | 1,202 | 51 | Ann Taylor LOFT | 5,500 | 65 | Pacific Sunwear | 3,500 |
| 8 | Available | 6,200 | 22-23 | X Golf | 7,000 | 38 | Available | 1,401 | 52 | Victoria's Secret | 6,275 | 66 | Hollister | 6,480 |
| 9 | Available | 1,500 | 24 | Available | 1,090 | 39 | Village Shoes | 4,000 | 53 | Pandora | 3,000 | 67 | American Eagle Outfitters | 5,400 |
| 10 | Available | 4,200 | 26 | Johnson Fitness | 3,600 | 40 | Discovery Clothing | 10,377 | 54 | Available | 2,483 | 68 | Management Office | 2,592 |
| 11 | uBreakiFix | 1,200 | 27 | Bonefish Grill | 6,637 | 41 | Lane Bryant | 4,800 | 55 | Torrid | 2,516 | 69 | Aeropostale | 3,600 |
| 12 | Available | 1,115 | 28 | Available (Former Restaurant) | 6,803 | 42 | Hallmark | 3,990 | 70 | Tilly's | 6,500 | 71 | Available | 4,200 |
| 13 | Available | 1,122 | 29 | Available | 2,040 | 43 | Xfinity | 4,176 | 72 | Old Navy | 18,800 | 73 | DSW Shoe Warehouse | 24,700 |
| 14 | Claire's | 1,200 | 30 | Available | 1,635 | 44 | Carter's | 4,560 | 74 | Dick's Sporting Goods | 65,000 | | | |

ALGONQUIN COMMONS



ALGONQUIN COMMONS



Marget Graham

Mid-America Asset
Management, Inc.

T: 630.954.7307

F: 630.954.7304

MGraham@MidAmericaGrp.com

April Smith

Mid-America Asset
Management, Inc.

T: 630.954.7451

F: 630.954.7304

ASmith@MidAmericaGrp.com

Elizabeth Sweeney

Mid-America Asset
Management, Inc.

T: 630.954.7385

F: 630.954.7304

ESweeney@MidAmericaGrp.com



One Parkview Plaza, 9th Floor
Oakbrook Terrace, Illinois 60181
630.954.7300

MidAmericaGrp.com

Owned By:



CONTACT