



# SHORES CENTER

REDWOOD CITY, CA



100 Marine Parkway



**ROCKPOINT**  
GROUP



**Newmark**  
**Knight Frank**

JOSH ROWELL | 650.358.5261  
CRAIG KALINOWSKI | 650.358.5287



1 Twin Dolphin Drive

PROJECT HIGHLIGHTS

HIGHLIGHTS

- Three premier Class A office buildings totaling ±145,000 SF
- Water views along lagoon
- Central peninsula location - 15 minutes from SFO & Downtown Palo Alto
- Walking distance to Redwood Shores Marketplace, Bay Club, & Pullman San Francisco Bay Hotel
- Convenient freeway access to Highway 101

FEATURES

- Shuttle service to San Carlos Caltrain station
- New landscape & lobbies
- On-site gym with showers
- Ample parking
- On-site property management team

RECENT PROJECT UPGRADES  
NEW LANDSCAPING AND LOBBIES



**RENOVATED  
LOBBY**  
3 TWIN DOLPHIN



**SPEC SUITE**  
3 TWIN DOLPHIN

**SHORES CENTER**  
REDWOOD CITY, CA



## 100 MARINE PARKWAY

### SECOND FLOOR

- Suite 215:  $\pm 1,225$  SF
- Suite 250:  $\pm 3,115$  SF

### THIRD FLOOR

- Suite 350:  $\pm 3,207$  SF

*Suites 215 & 250 can be combined for  $\pm 4,340$  SF*

## 1 TWIN DOLPHIN DRIVE

### FIRST FLOOR

- $\pm 7,008$  SF

*Available 11/01/2019*

## 3 TWIN DOLPHIN DRIVE

### SECOND FLOOR

- Suite 260:  $\pm 1,847$  SF
- Suite 295:  $\pm 2,404$  SF

### THIRD FLOOR

- Suite 325:  $\pm 1,736$  SF
- Suite 350:  $\pm 4,066$  SF



# AVAILABLE SPACES

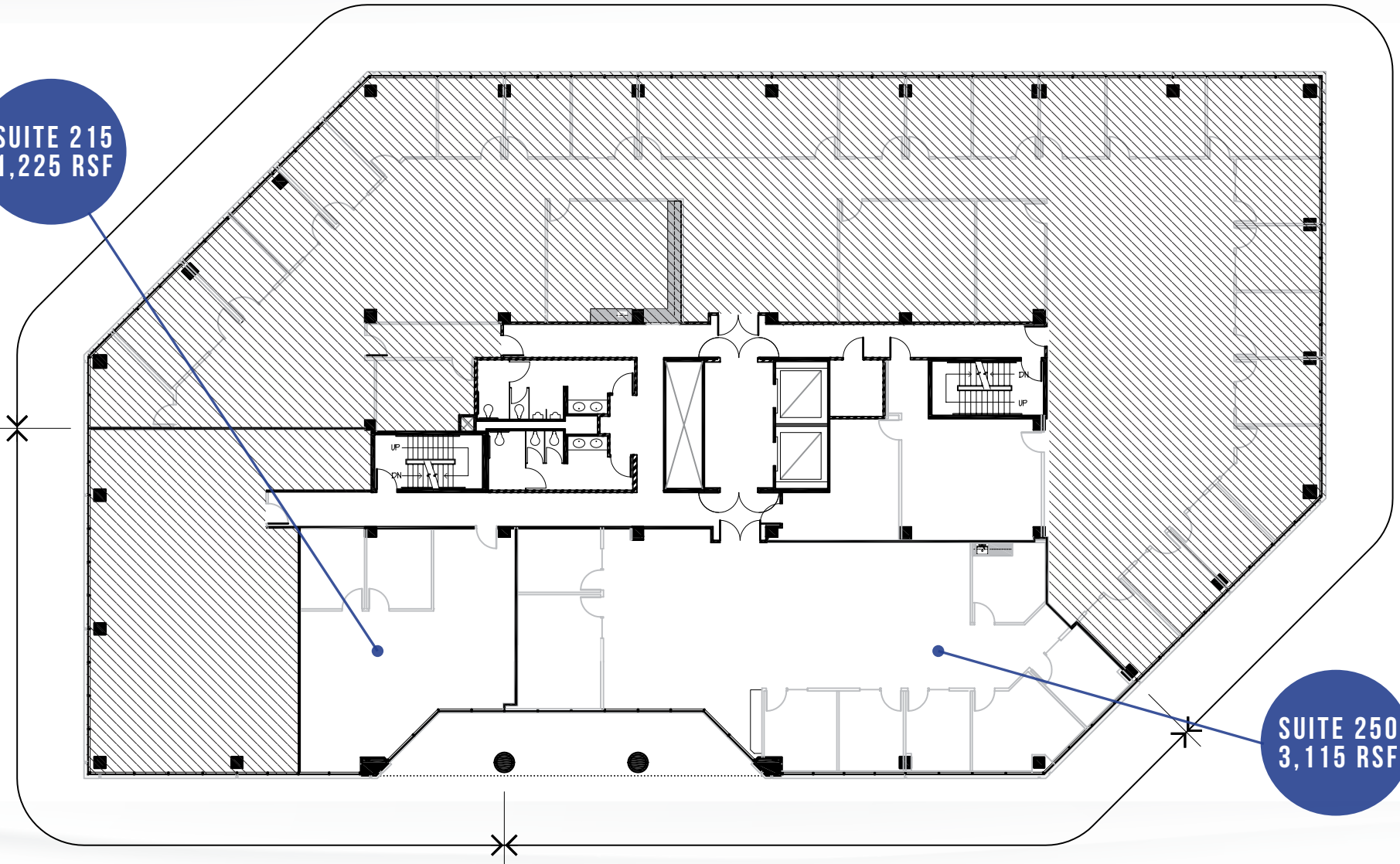
MARINE PKWY & TWIN DOLPHIN

# FLOOR PLANS

100 MARINE PARKWAY

SECOND FLOOR • Suites 215 & 250 can be combined for ±4,340 SF

SUITE 215  
1,225 RSF

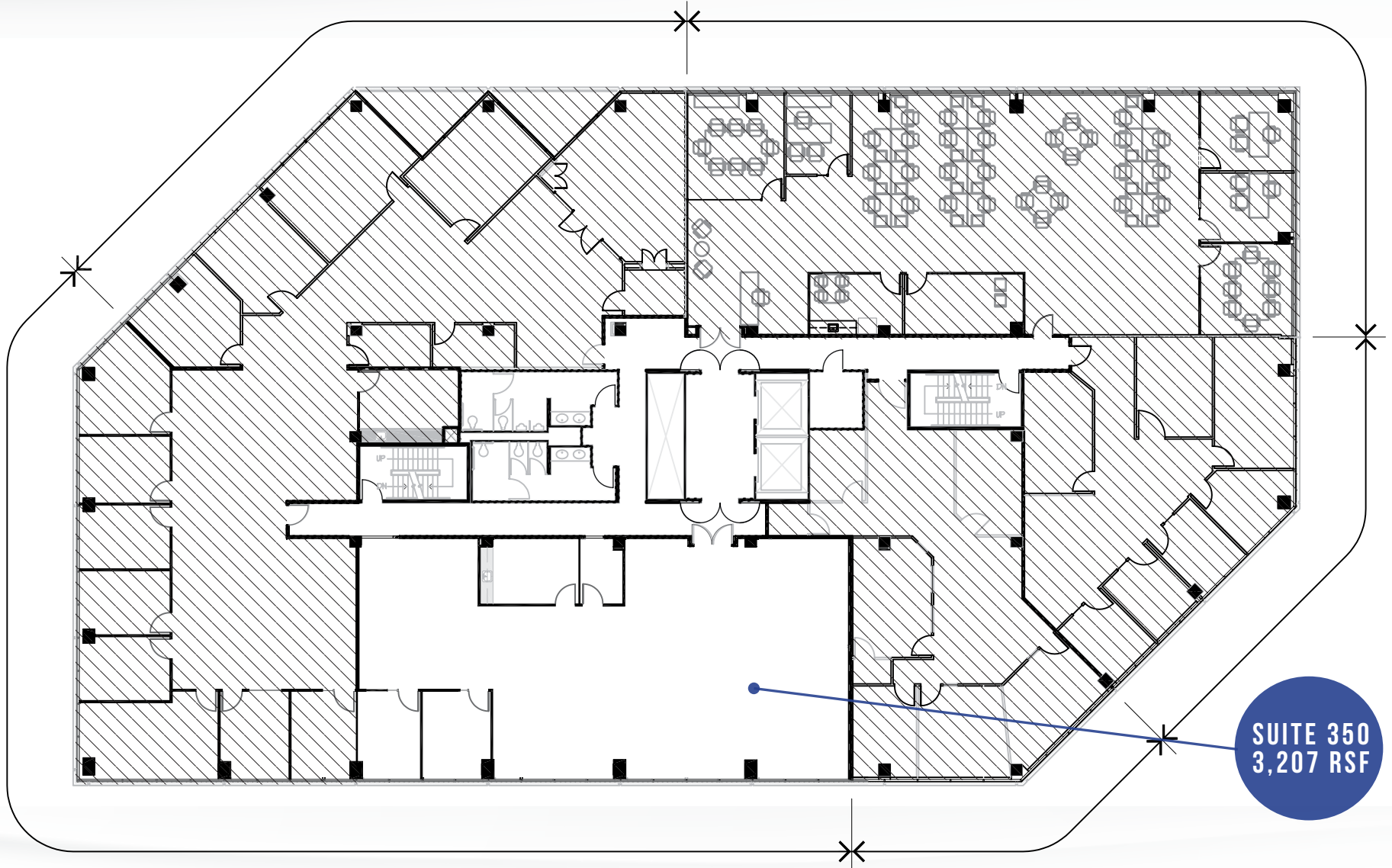


SUITE 250  
3,115 RSF

# FLOOR PLANS

100 MARINE PARKWAY

THIRD FLOOR



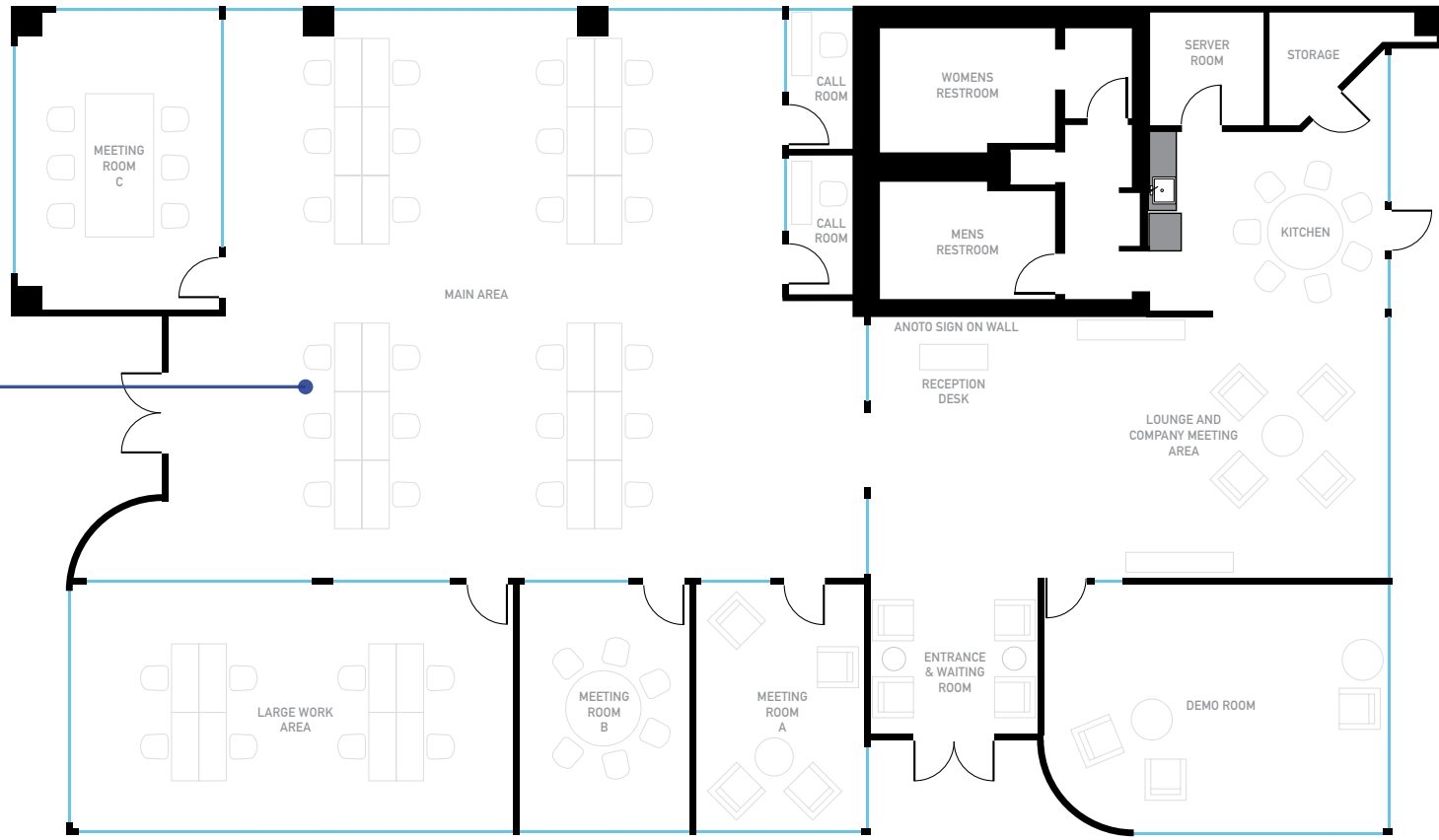
SUITE 350  
3,207 RSF

# FLOOR PLANS

1 TWIN DOLPHIN DRIVE

FIRST FLOOR • Available 11/01/2019

7,008 RSF



— = Glass Walls

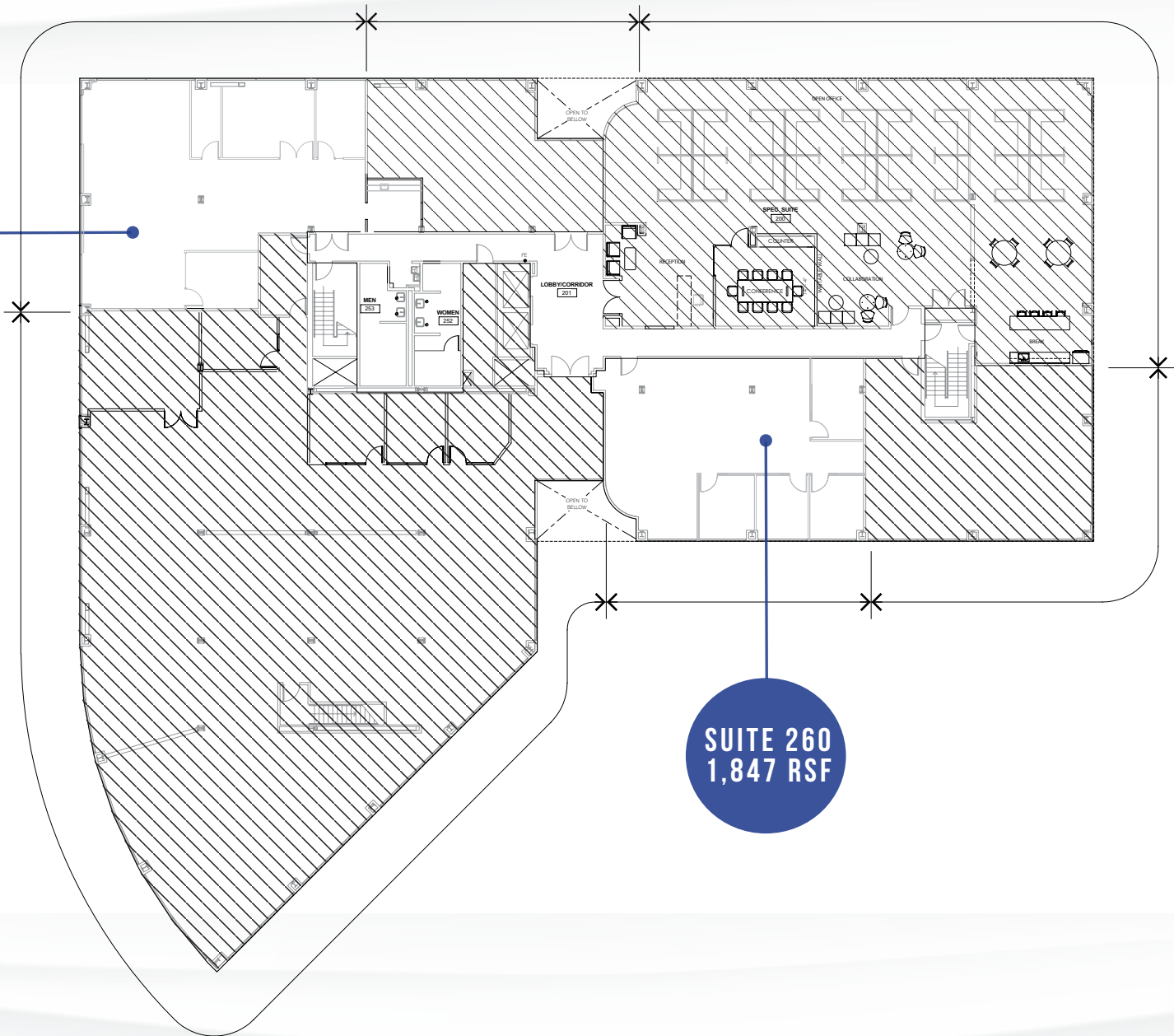


# FLOOR PLANS

3 TWIN DOLPHIN DRIVE

SECOND FLOOR

SUITE 295  
2,404 RSF



SUITE 260  
1,847 RSF

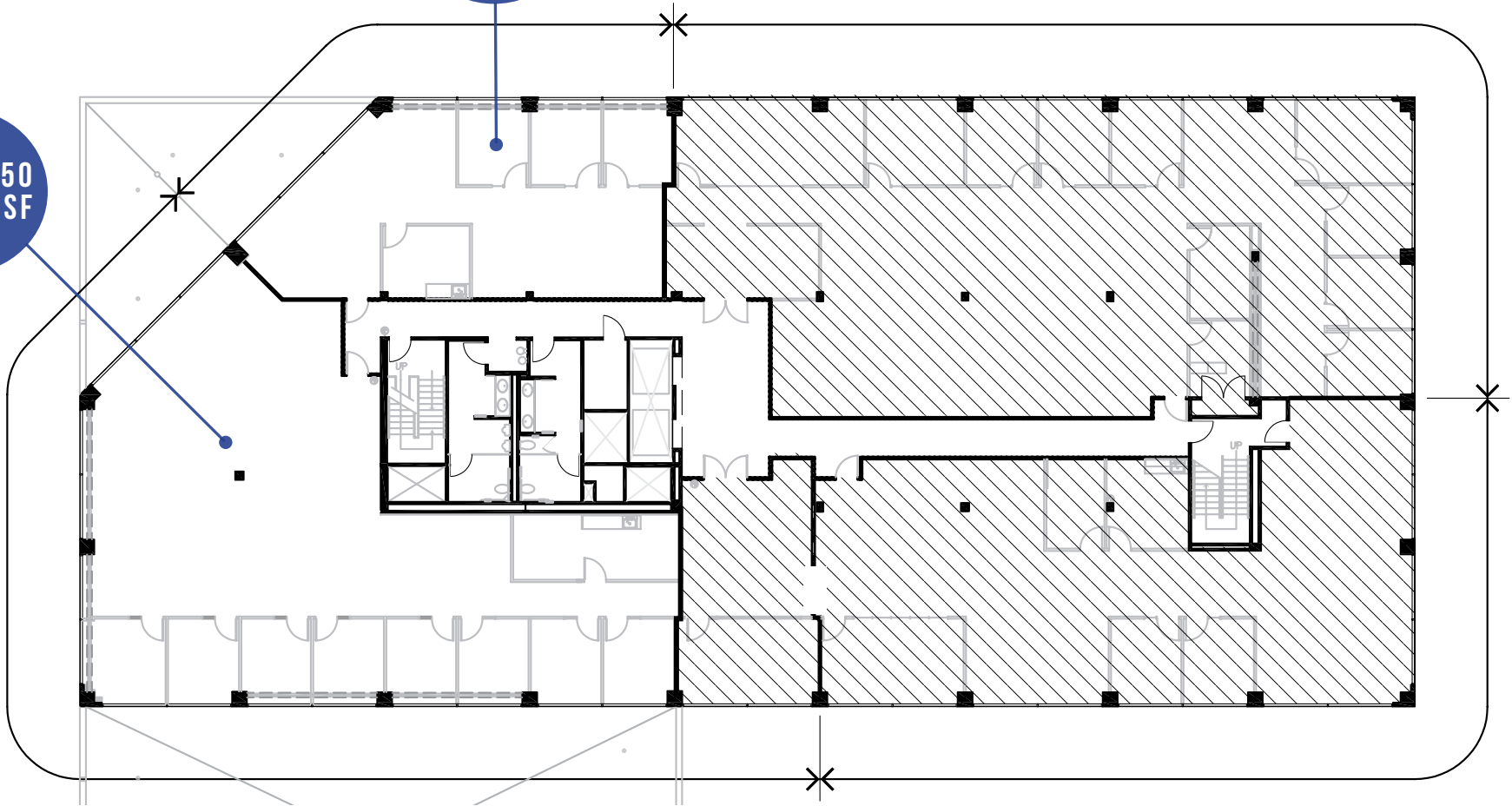
# FLOOR PLANS

3 TWIN DOLPHIN DRIVE

THIRD FLOOR

SUITE 325  
1,736 RSF

SUITE 350  
4,066 RSF



# AMENITIES MAP

## QUICK SERVICE

- 1 Starbucks
- 2 Jamba Juice
- 3 Una Mas Mexican Grill
- 4 Falafel Tazah
- 5 Nob Hill Foods
- 6 Togo's Sandwiches
- 7 Steve's Cafe & Catering
- 8 Starbucks
- 9 In N Out Burger
- 10 Gherkin's Sandwich Shop
- 11 Burger King

## DINING

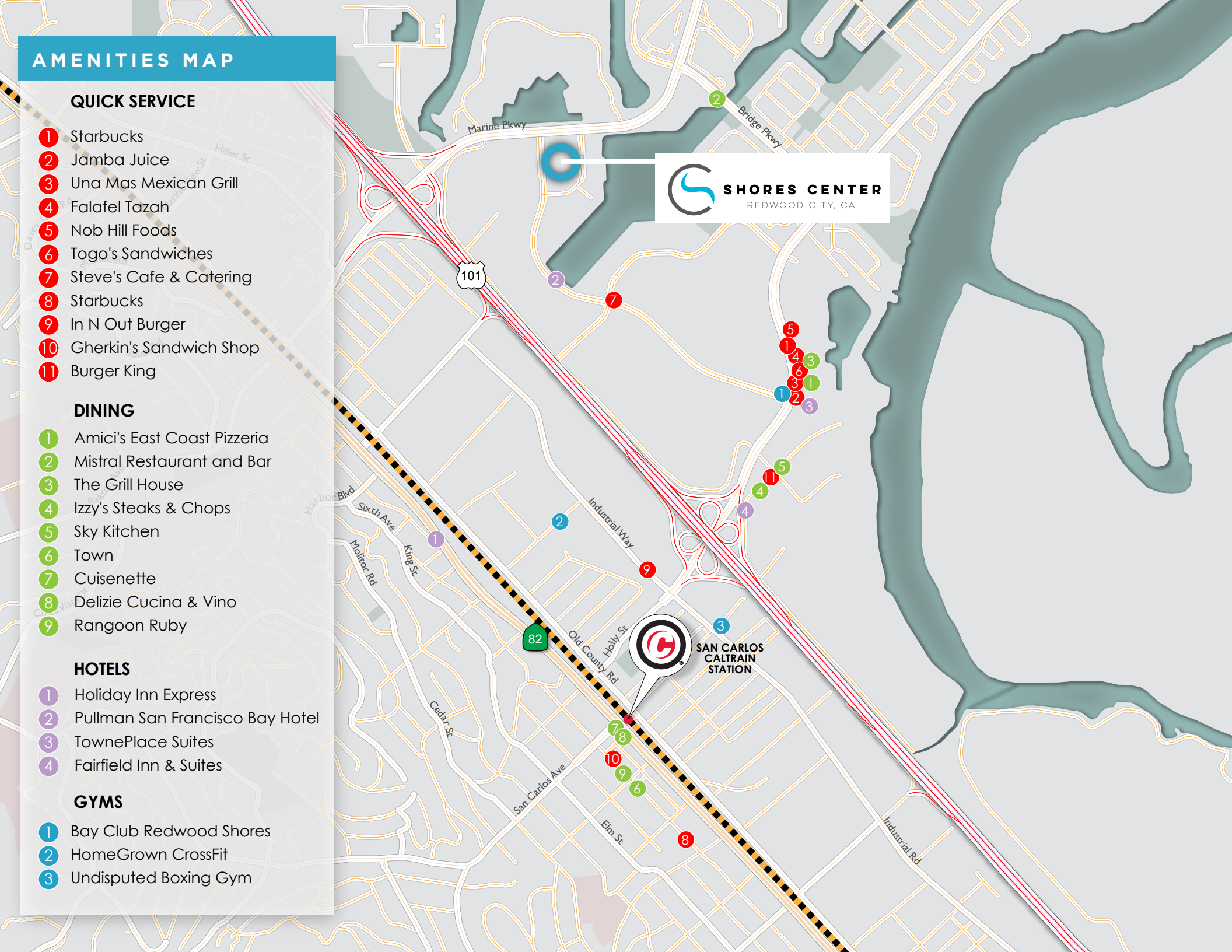
- 1 Amici's East Coast Pizzeria
- 2 Mistral Restaurant and Bar
- 3 The Grill House
- 4 Izzy's Steaks & Chops
- 5 Sky Kitchen
- 6 Town
- 7 Cuisenette
- 8 Delizie Cucina & Vino
- 9 Rangoon Ruby

## HOTELS

- 1 Holiday Inn Express
- 2 Pullman San Francisco Bay Hotel
- 3 TownePlace Suites
- 4 Fairfield Inn & Suites

## GYMS

- 1 Bay Club Redwood Shores
- 2 HomeGrown CrossFit
- 3 Undisputed Boxing Gym



# SHUTTLE SERVICES

## REDWOOD SHORES TWIN DOLPHIN AREA CALTRAIN SCHEDULE + MAP

PM TRAINS

Northbound Train No.	211	221	225	231
Arrives San Carlos	6:55	7:55	8:24	8:55
Southbound Train No.	210	216	220	226
Arrives San Carlos	7:15	7:54	8:15	8:54
<b>AM LOOP</b>				
Depart San Carlos Caltrain Station	7:20	8:00	8:32	9:02
100 Redwood Shores Pkwy (Bus Stop)	7:25	8:05	8:37	9:07
555 Twin Dolphin	7:27	8:07	8:39	9:09
333 Twin Dolphin	7:28	8:08	8:40	9:10
Shorebreeze	7:30	8:10	8:42	9:12
Sofitel	7:31	8:11	8:43	9:13
<b>101 Twin Dolphin (Shores Center)</b>	<b>7:33</b>	<b>8:13</b>	<b>8:45</b>	<b>9:15</b>
100 Oracle Park	7:35	8:15	8:47	9:17
300 Oracle Park	7:38	8:18	8:50	9:20
500 Oracle Park	7:39	8:19	8:51	9:21

AM TRAINS

<b>PM LOOP</b>						
555 Twin Dolphin	2:25	3:02	3:40	4:46	5:30	6:30
333 Twin Dolphin	2:26	3:03	3:41	4:47	5:30	6:31
Shorebreeze	2:28	3:05	3:43	4:49	5:33	6:33
Sofitel (255 & 275 Shoreline Drive)	2:29	3:06	3:44	4:50	5:34	6:34
<b>101 Twin Dolphin (Shores Center)</b>	<b>2:31</b>	<b>3:08</b>	<b>3:46</b>	<b>4:52</b>	<b>5:36</b>	<b>6:36</b>
100 Oracle Park	2:33	3:10	3:48	4:54	5:38	6:38
300 Oracle Park	2:36	3:13	3:51	4:57	5:41	6:41
500 Oracle Park	2:37	3:14	3:52	4:58	5:42	6:42
100 Redwood Shores Pkwy (Bus Stop)	2:44	3:21	3:59	5:05	5:49	6:49
Arrive San Carlos Caltrain Station	2:54	3:31	4:09	5:15	5:59	6:59
<b>AM TRAINS</b>						
Northbound Train No.	257	159	261	269	277	287
Arrives San Carlos	3:23	3:50	4:29	5:29	6:04	7:04
Southbound Train No.	254	156	258	264	274	284
Arrives San Carlos	3:14	3:52	4:14	5:20	6:20	7:20





# SHORES CENTER

REDWOOD CITY, CA

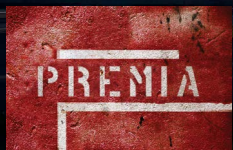
## JOSH ROWELL

650.358.5261  
jrowell@ngkf.com  
CA RE License# 01236434

## CRAIG KALINOWSKI

650.358.5287  
ckalinowski@ngkf.com  
CA RE License# 01260870

2950 SOUTH DELAWARE STREET, SUITE 125  
SAN MATEO, CA 94403



**ROCKPOINT**  
GROUP



The distributor of this communication is performing acts for which a real estate license is required. The information contained herein has been obtained from sources deemed reliable but has not been verified and no guarantee, warranty or representation, either express or implied, is made with respect to such information. Terms of sale or lease and availability are subject to change or withdrawal without notice. 17-1675•09/19