



# FOR SALE OFFICE-RETAIL-WAREHOUSE



**909 Business Center**

**909 SE Everett Mall Way  
Everett, WA 98208**

SUHRCO manages a diverse portfolio of commercial and multifamily residential properties in the Puget Sound region. Established in 1973, the company employs more than 300 experienced professionals dedicated to meeting the management, leasing and brokerage needs of building owners, tenants, and condominium/homeowner association boards and owners.

## FEATURES

- For sale at \$7.8 million
- Five buildings totaling approximately 79,139 SF, consisting of office, retail & warehouse on 4.92 acres.
- Prominent location on Everett Mall Way with a traffic count of approximately 35,000 vehicles per day. Located between Trader Joe's and Arby's and approximately 300 yards west of the 729,000 SF Everett Mall that features over 110 shops.
- 22 tenants
- 231 parking stalls at 2.9 spaces/1,000 SF
- Constructed in 1980

## Contact:

Peter Townsend, RPA® Email: [petert@suhrco.com](mailto:petert@suhrco.com)

T: (425) 455-1950 F: (425) 462-1943  
2010 156th Avenue NE, Suite 100, Bellevue, WA 98007

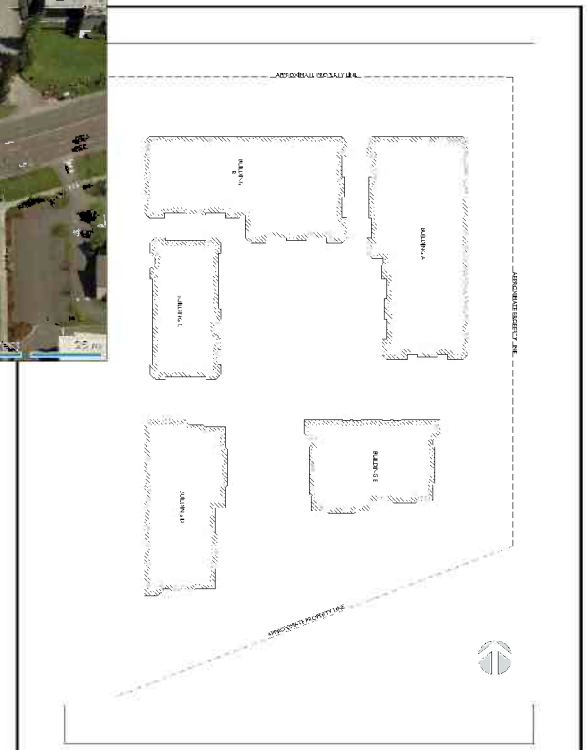
**SUHRCO Management, Inc., AMO®**



# FOR SALE WAREHOUSE-OFFICE-RETAIL



SITE PLAN



**909 Business Center**  
**909 SE Everett Mall Way**  
**Everett, WA 98208**

Contact:  
Peter Townsend, RPA® Email: [petert@suhrco.com](mailto:petert@suhrco.com)

T: (425) 455-1950  
F: (425) 462-1943  
2010 156th Avenue NE, Suite 100  
Bellevue, WA 98007

