



# 7475 WISCONSIN AVENUE

OFFICE SPACE FOR SUBLEASE

PROMINENT  
CLASS A OFFICE  
IN THE HEART  
OF BETHESDA



# 7475 WISCONSIN AVENUE

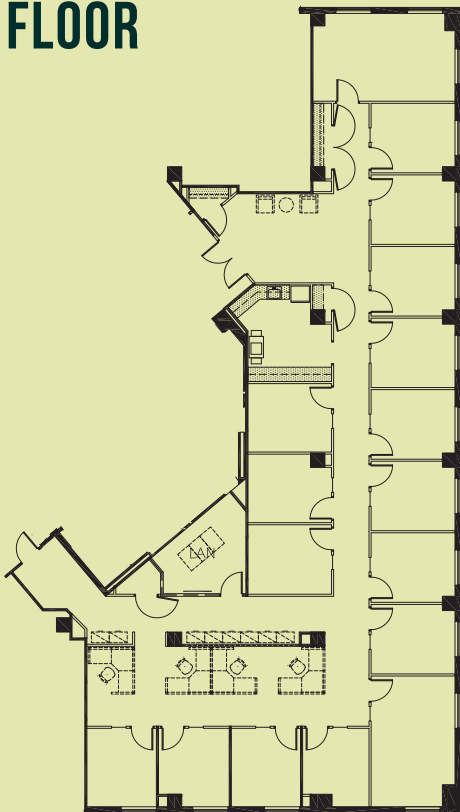
BETHESDA, MARYLAND 20814



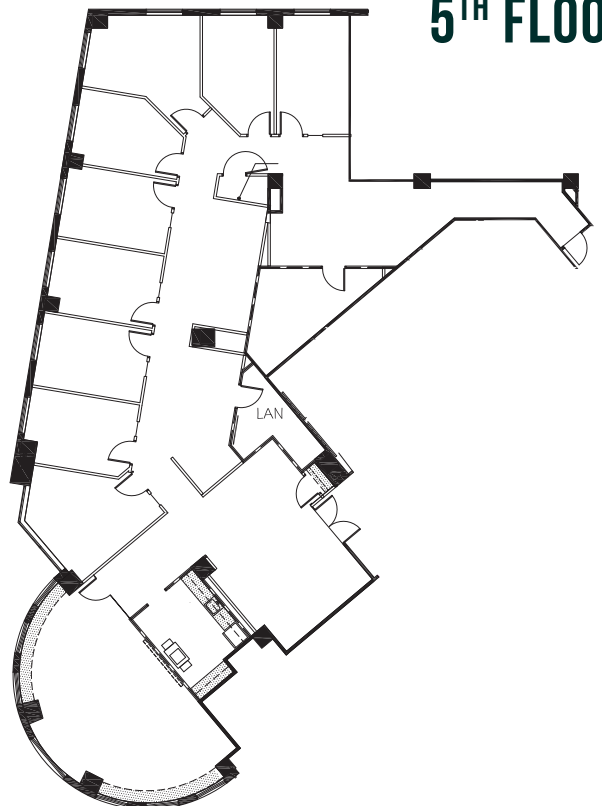
- 4,826 square feet on the 4th floor
- 4,848 square feet on the 5th floor
- Sublease opportunity through April 30, 2024
- Prominent location on the corner of Wisconsin Avenue and East West Highway
- Direct access to the Bethesda Metro Station via tunnel
- Both suites offer double glass herculite door entrance directly off the elevator lobby
- High-end finishes with glass side lights incorporated in each office
- Kitchen/copy room provided in both suites



## 4<sup>TH</sup> FLOOR



## 5<sup>TH</sup> FLOOR





## FOR MORE INFORMATION

**Susan Kay**

301.896.9133

[Susan.Kay@transwestern.com](mailto:Susan.Kay@transwestern.com)

**Mark Boyce**

301.896.9090

[Mark.Boyce@transwestern.com](mailto:Mark.Boyce@transwestern.com)



6700 Rockledge Drive, Suite 500-A • Bethesda, Maryland 20817 • 301.571.0900

