



# 5500 Olney Laytonsville Road

OLNEY, MD 20832

**Ground Lease Available**



## Property Highlights

- Just over 2 acres (92,783 SF)
- 3,537 square foot building
- A new traffic light will be installed adjacent to the property.
- Allowable uses: Gas Stations/C-Store uses, Daycare, Residential Care Facility, Retail Service Establishment, Car Wash, and more.
- Limited term remains with existing tenant
- Zoning: CRT-0.25 C-0.25 R-0.25 H-35

## Site Plan Key

 AVAILABLE

## Demographics (2018 Estimated)

	1 Mile	3 Mile	5 Mile
Population	695	28,295	119,409
Average HH Income	\$229,102	\$168,106	\$144,349
Number of Employees	345	11,826	36,297

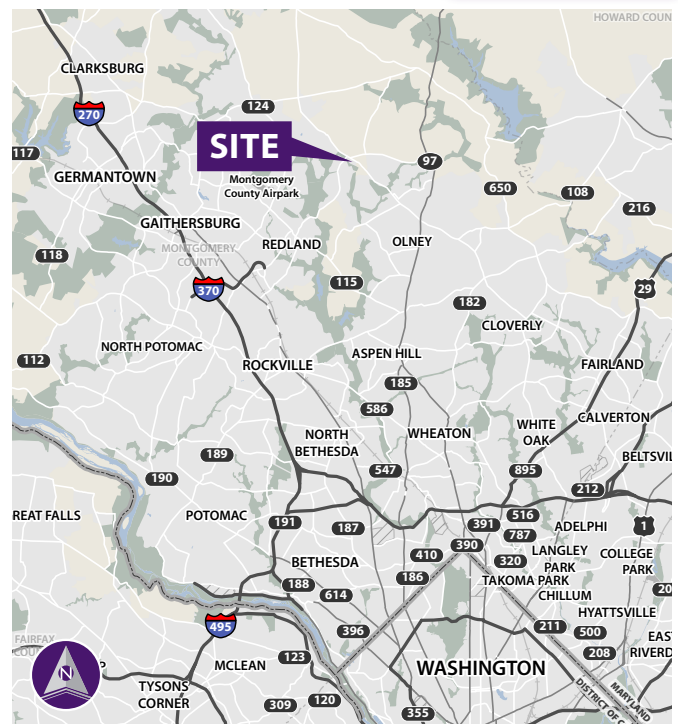
## Please Contact

**Brian C. Mitchell**

240.482.3604 (direct)

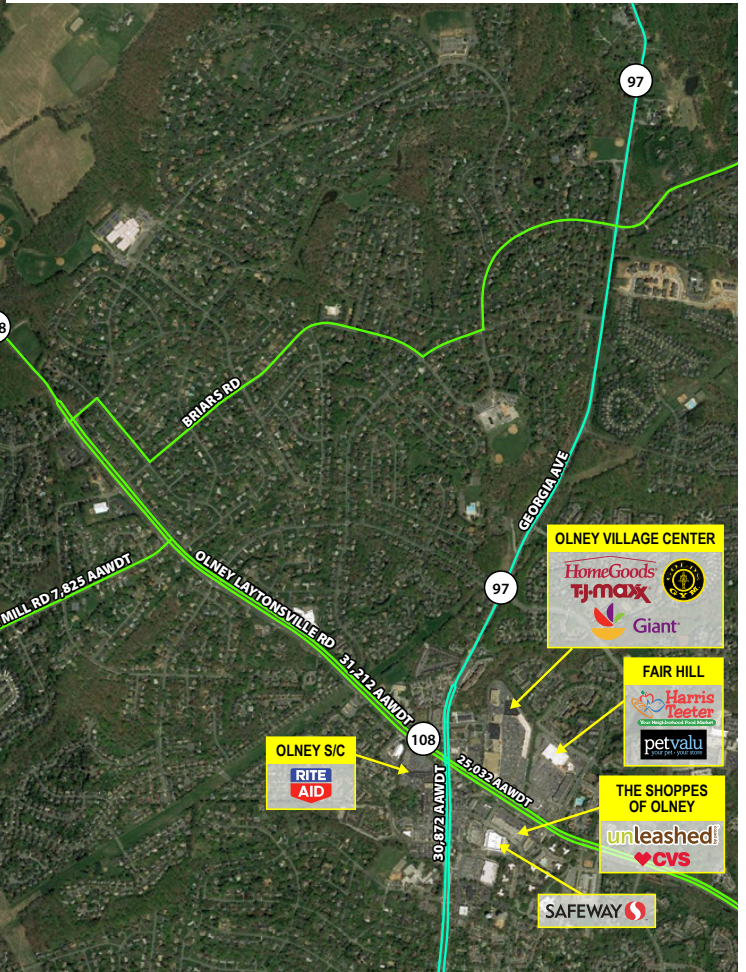
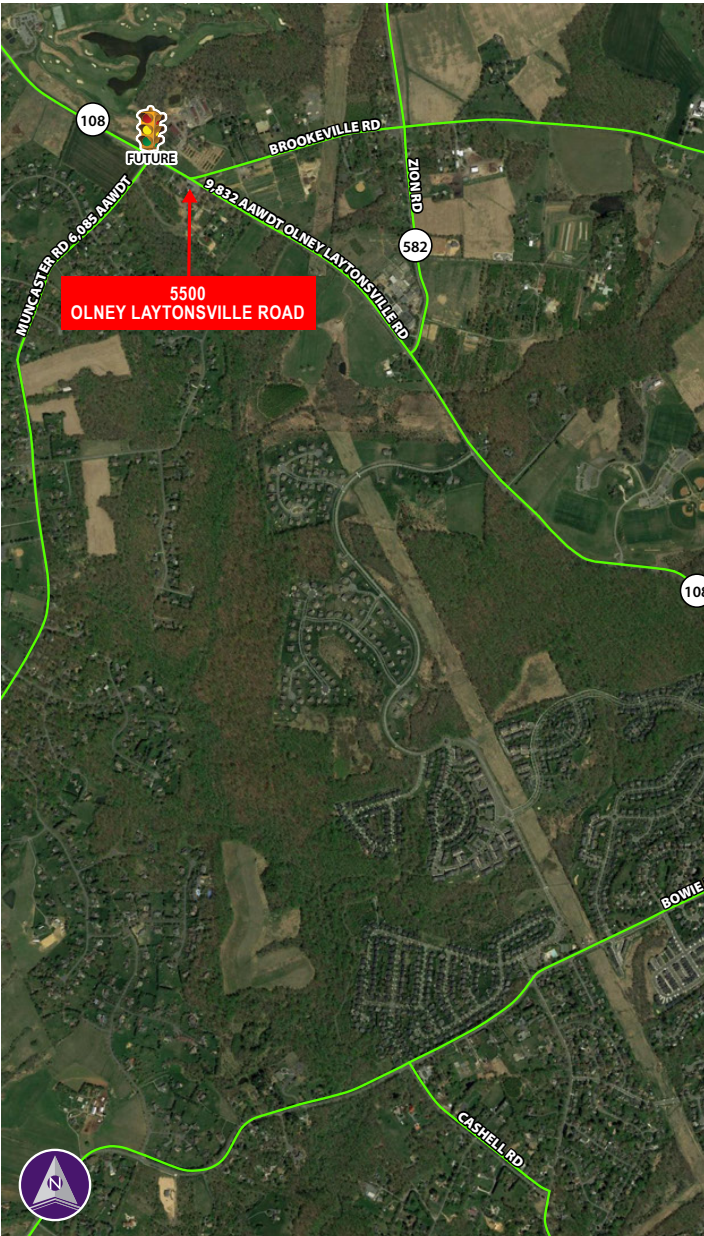
301.656.3030 (office)

bmittchell@hrretail.com



# 5500 OLNEY LAYTONSVILLE ROAD ■ OLNEY, MD

## EXISTING



Information herein has been obtained from sources believed to be reliable. While we do not doubt its accuracy, we have not verified it and make no guarantee, warranty or representation about it. Independent confirmation of its accuracy and completeness is your responsibility. H&R Retail, Inc.