

# 1,136 - 3,485 SF

## RETAIL SPACE AVAILABLE

7300 W 80TH ST, OVERLAND PARK, KS

# LANE4



## HIGHLIGHTS

- 1,136 - 3,485 SF available; perfect for retail or office use
- Located under brand new, 36-unit Class A Market Loft apartments
- Surrounded by high daytime populations and strong residential
- Extremely walkable area in the heart of downtown Overland Park
- Downtown Overland Park is undergoing a revitalization with brand new office space, retail and dining options, and increased parking
- Adjacent to the Edison District, The Vue apartments, and Overland Park Farmer's Market
- On-site, covered parking

## DEMOGRAPHICS

	1 MILE	3 MILE	5 MILE
Population	12,697	104,921	268,527
Avg. HH Income	\$67,782	\$88,537	\$99,039
# of Businesses	579	5,152	14,471
# of Employees	6,585	73,597	219,246

4705 Central Street | Kansas City, MO 64112

816.960.1444 | lane4group.com



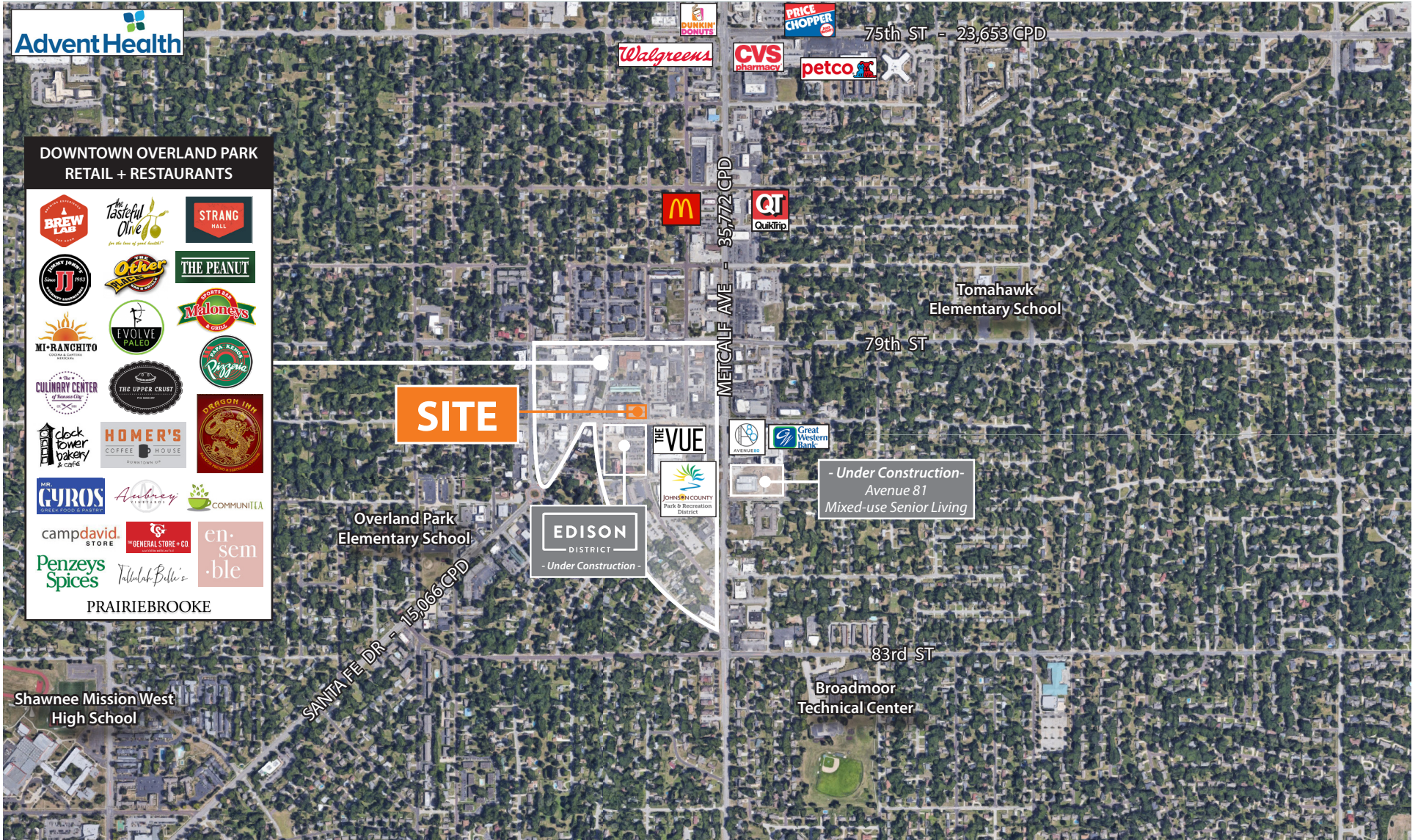
BROOKE SCHWOB / 816.268.9110

bschwob@lane4group.com

1,136 - 3,485 SF FOR LEASE

7300 W 80TH ST, OVERLAND PARK, KS

LANE4



4705 Central Street | Kansas City, MO 64112

816.960.1444 | lane4group.com

BROOKE SCHWOB / 816.268.9110

bschwob@lane4group.com

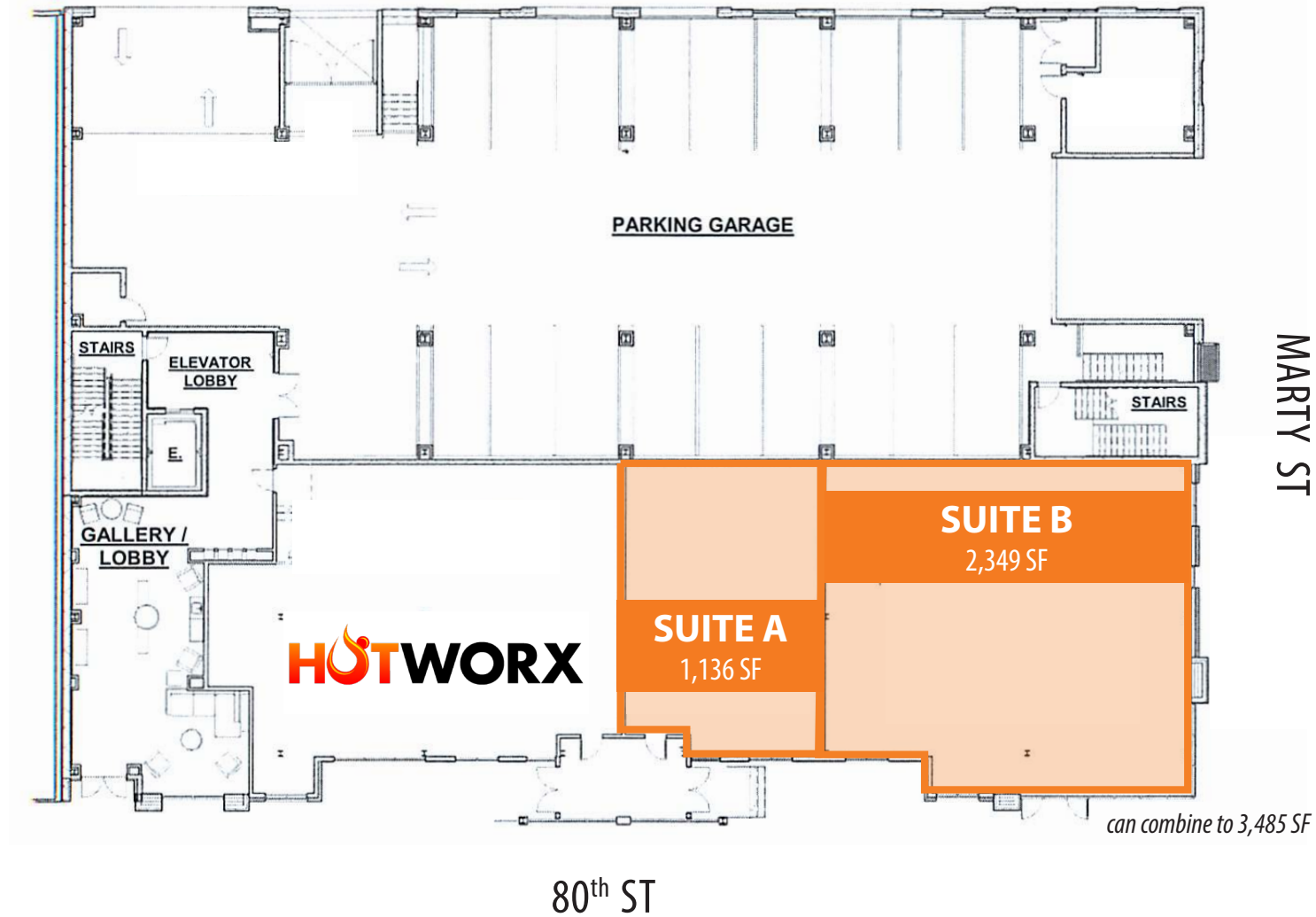


1,136 - 3,485 SF FOR LEASE

7300 W 80TH ST, OVERLAND PARK, KS

LANE4

CURRENT BUILDOUT



4705 Central Street | Kansas City, MO 64112  
816.960.1444 | lane4group.com

BROOKE SCHWOB / 816.268.9110  
bschwob@lane4group.com

