

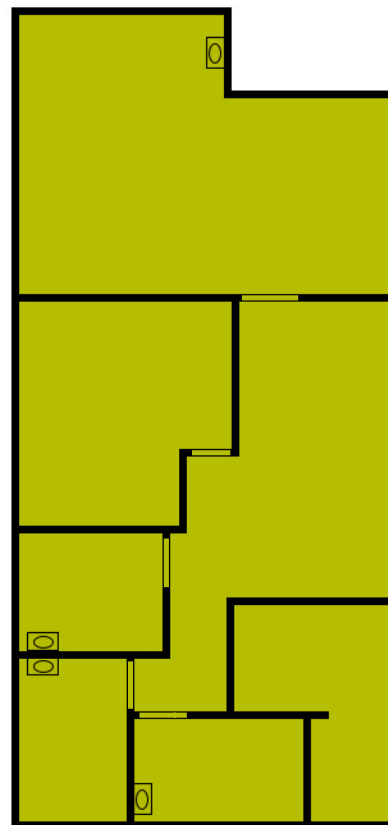
2790 Harbor Blvd. Costa Mesa, CA 92626

Suite 300

1,647 sf

PROPERTY FEATURES

- Three Story Office/Retail Building
- Prime Frontage on Harbor and Adams
- Upscale Renovation in Progress
- Solar Panels Installed for Rediced Utilities
- Elevator Served
- 12 Office Suites from 627 - 3,398 sf (Up to 13,947 sf)
- Free Surface Parking
- Located on Hard Corner of 12th Busiest OC Intersection



SUITE FEATURES

Corner Suite

Common Area

Four Offices/Treatment Rooms
w/ Sinks

For leasing information, please contact Michael Taylor at:

P: (949) 829-7465

E: Leasing@pmgmtg.com