

207 WESTPORT ROAD, KANSAS CITY, MO



BUILDING HIGHLIGHTS

- Approximately 15,943 SF building
- Availabilities:
 - 2nd Floor: 6,744 SF, divisible
- Located on Westport Road
- **Rental Rate: \$15.00/SF**

LEASING CONTACT

CONNER BEESE

P (816) 701-5011
cbeese@copaken-brooks.com

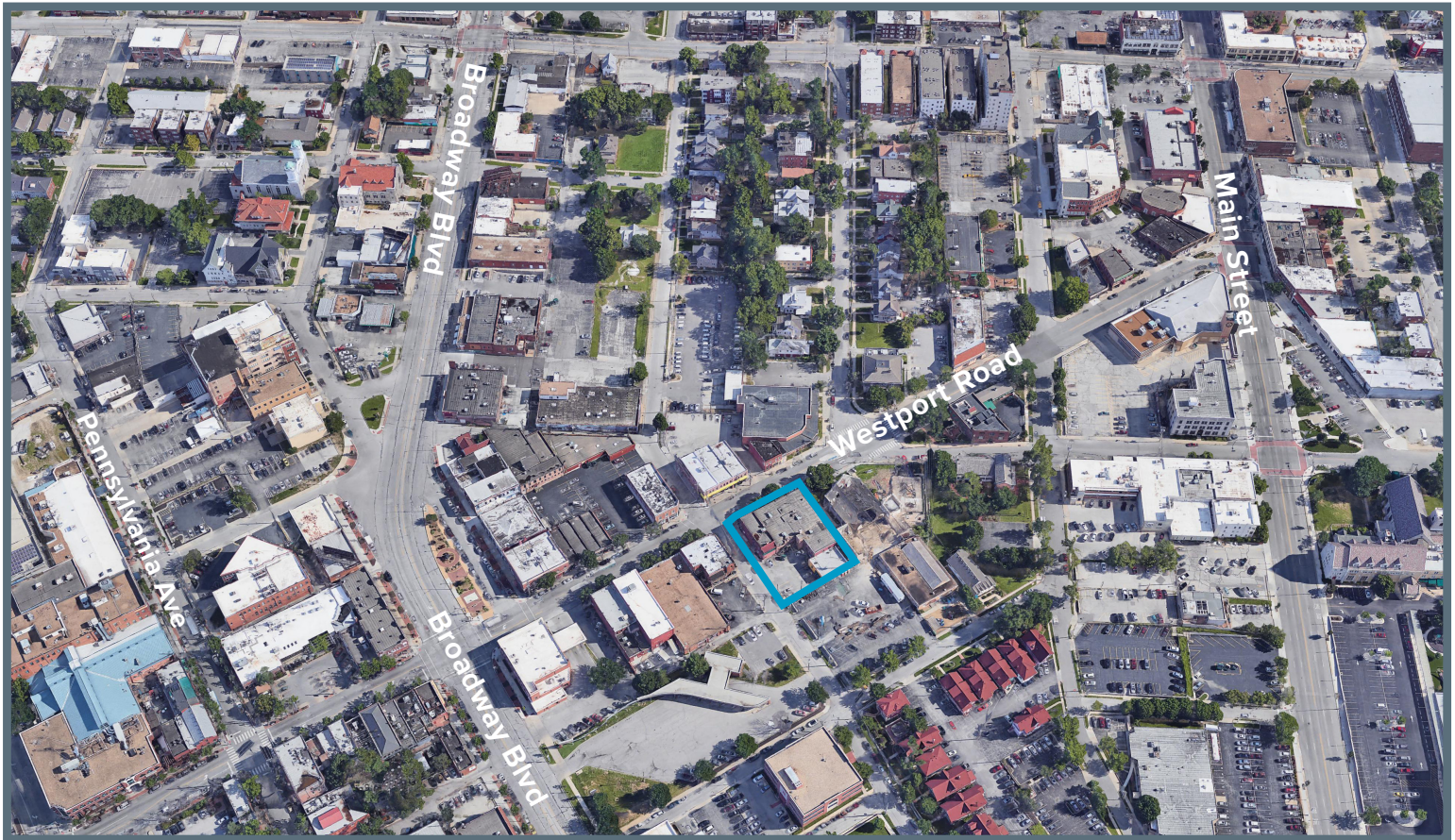
JOHN D. COE, SIOR, CCIM

P (816) 701-5064
jcoe@copaken-brooks.com

Welcome to 207 Westport Road,

This property is ideally located in the heart of the new development in Westport. The building consists of first floor office/retail, and second floor office space.

The building enjoys 15 parking spaces in the back of the building, additional parking in the lot to the south, as well as on-street parking available in the front and at the side of the property. It is located near The Plaza, Midtown, and Downtown area and close to Saint Luke's hospital.

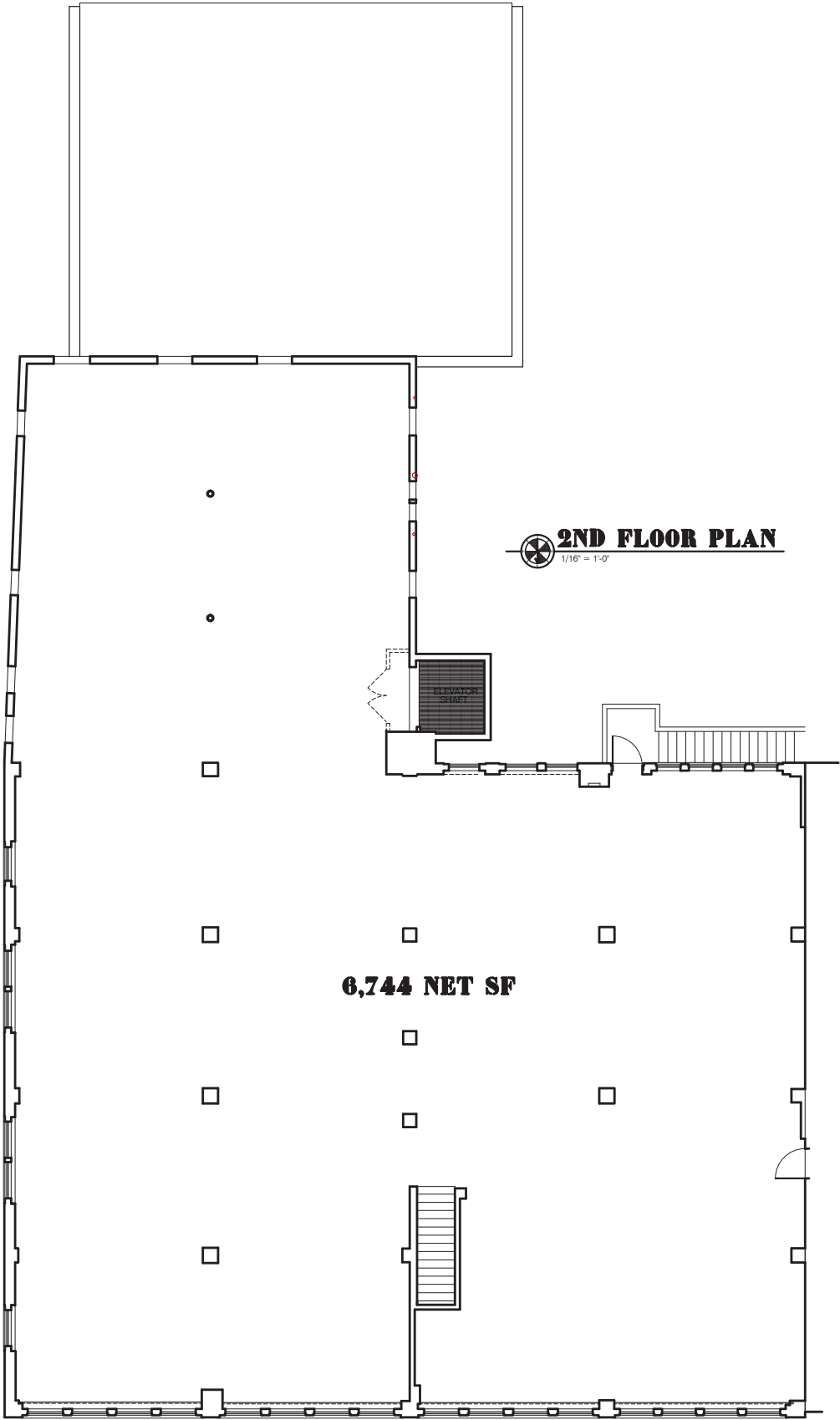


All information furnished regarding property for sale or lease is from sources deemed reliable, but no warranty or representation is made as to the accuracy thereof and the same is subject to errors, omissions, changes of prices, rental or other conditions, prior sale or lease, or withdrawal without notice.

NEIGHBORHOOD



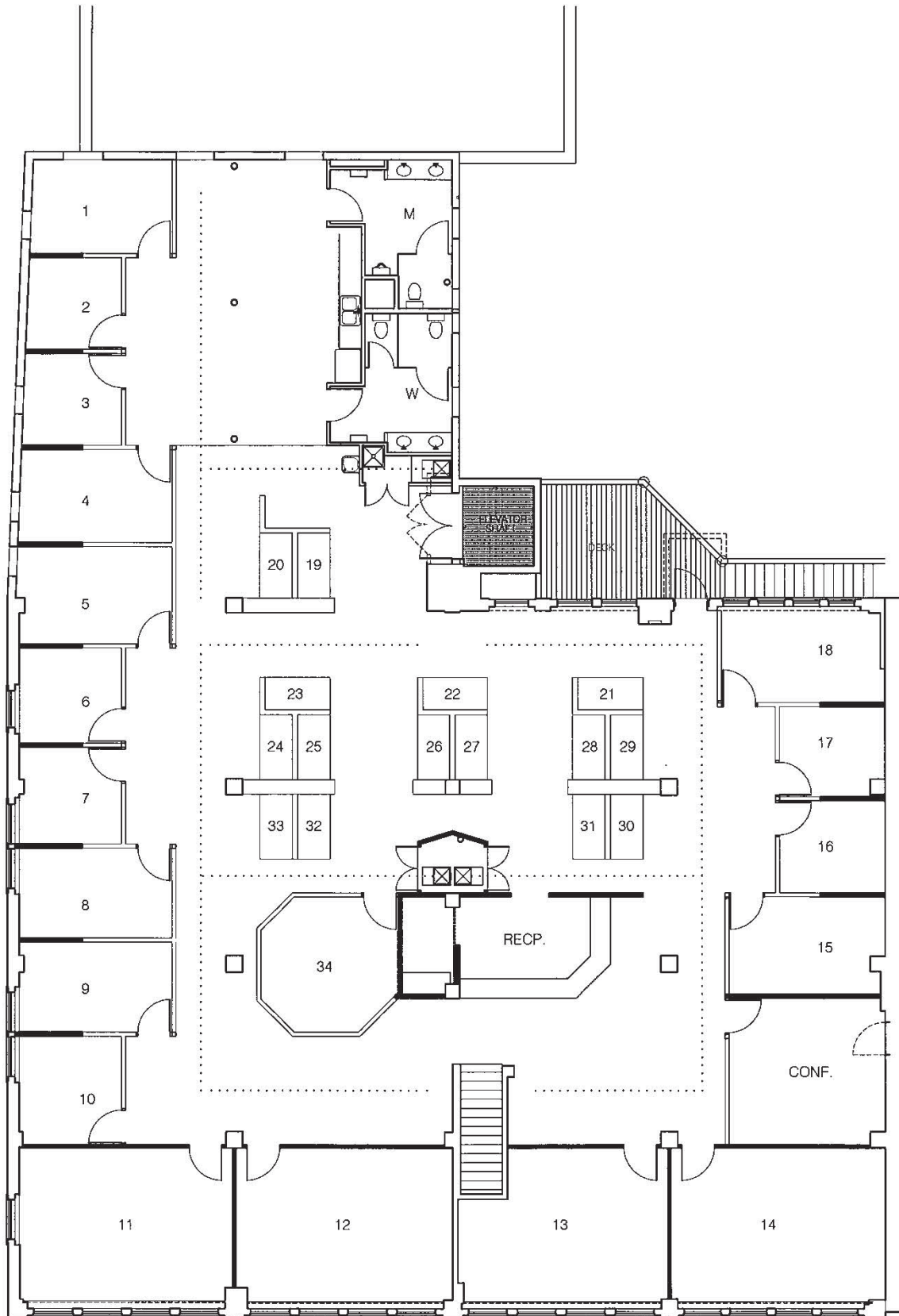
2ND FLOOR PLAN



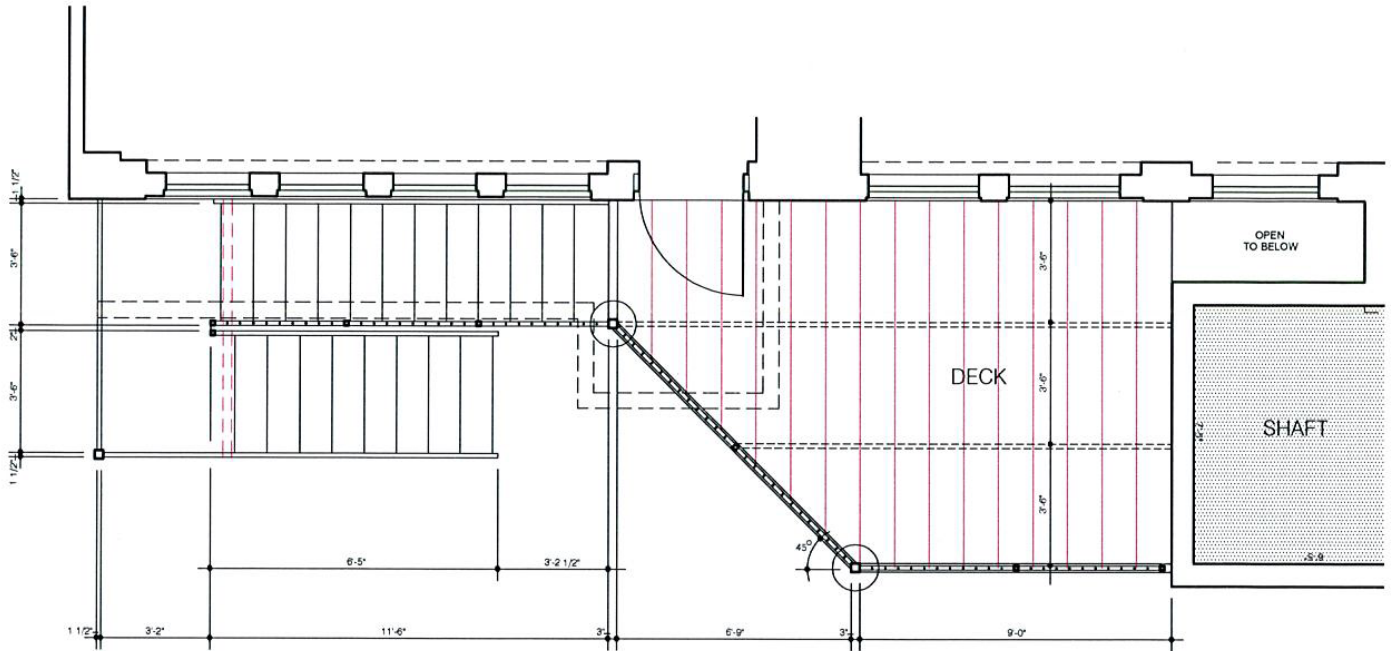
2ND FLOOR PLAN
1/16" = 1'-0"

6,744 NET SF

2ND FLOOR PLAN



PROPOSED DECK & STAIRWAY FOR 2ND FLOOR OFFICE



2ND FLOOR IMAGES

