

W STATE ROAD 426

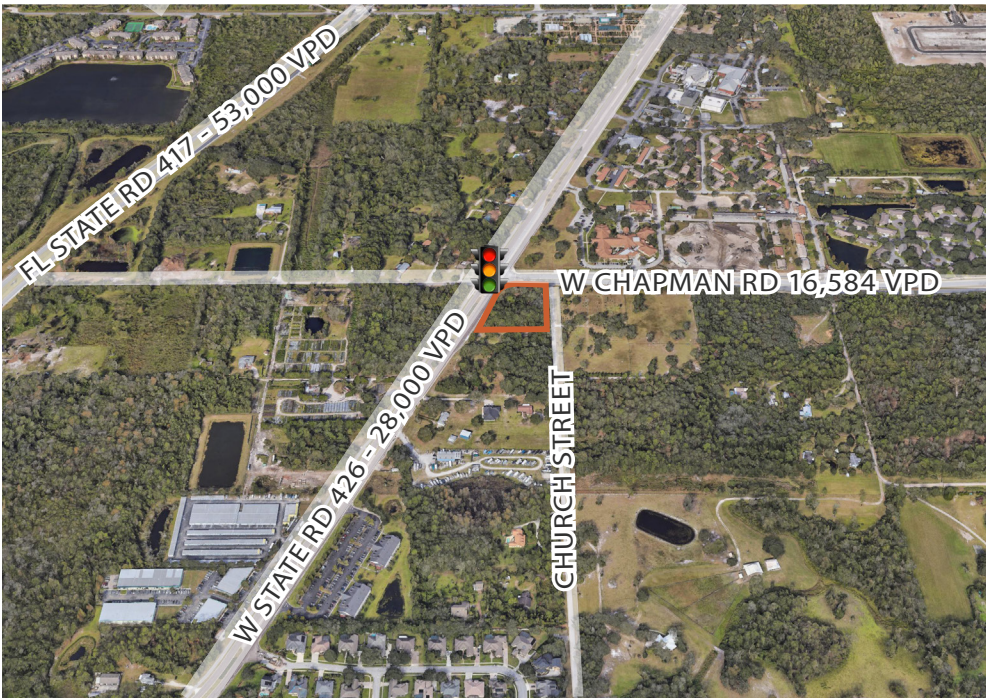
W CHAPMAN ROAD

CHURCH STREET

1.62 ± ACRE LAND FOR SALE

W CHAPMAN ROAD, OVIEDO FLORIDA 32765

PROPERTY OVERVIEW



PROPERTY DETAILS

Address	W Chapman Road, Oviedo FL 32765
Total Acres	1.62 ± acres
Zoning	C-1 (Seminole Count)
Municipality	Seminole County (Oviedo)
Land Use	Commercial
Utilities	City of Oviedo

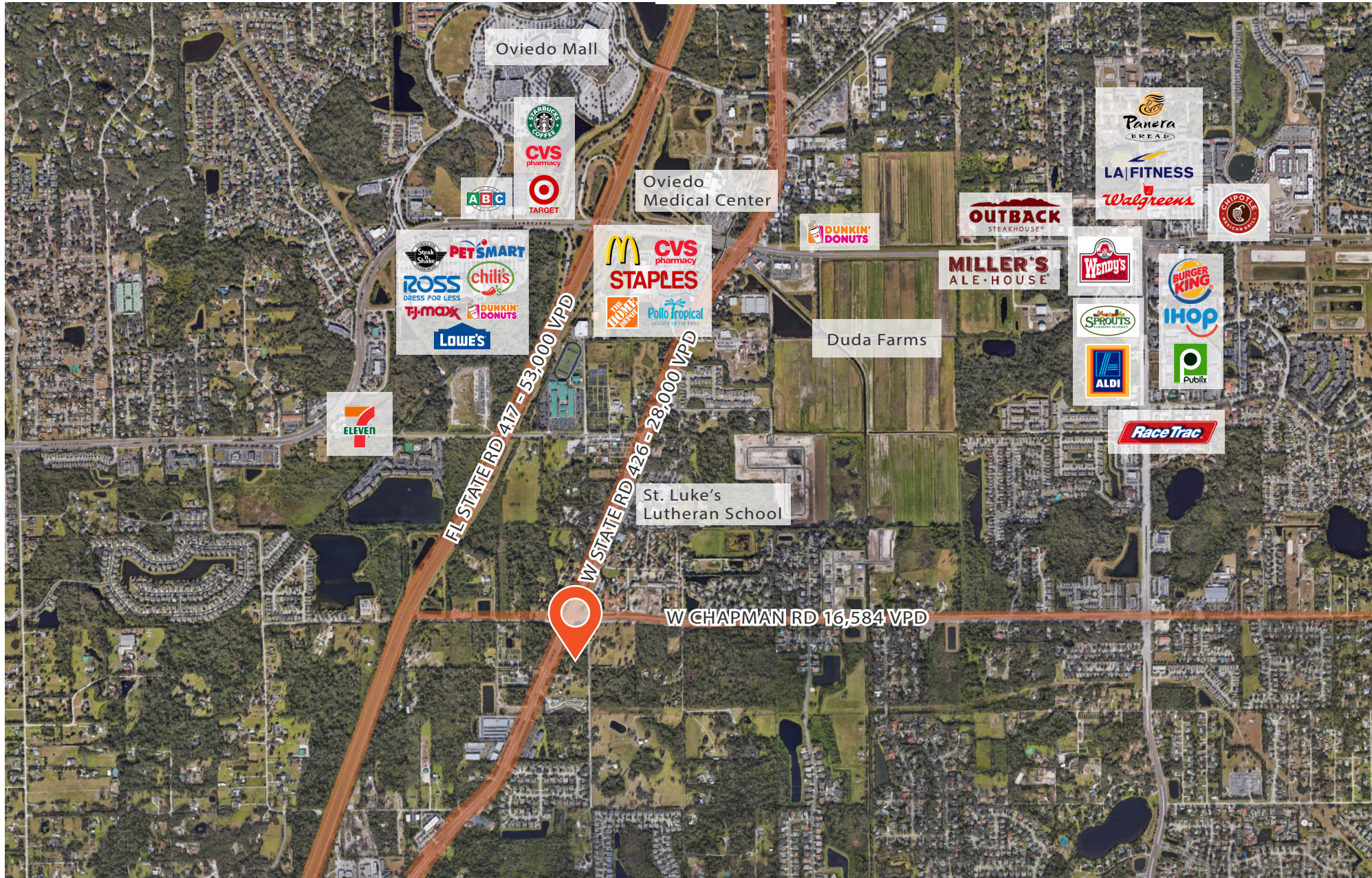
PROPERTY HIGHLIGHTS

- Pricing: \$1,500,000
- ± 1.62 Acres
- W State Rd 426 - 28,000 VPD

DEMOGRAPHICS

2019	1 MILE	3 MILES	5 MILES
2019 EST. POP	3,925	75,333	207,763
2019 EST. HH	1,457	26,716	73,601
2019 AVG HH INCOME	\$115,457	\$99,462	\$90,375

LOCATION MAP



W CHAPMAN ROAD
OVIEDO FL 32765

ANDY HAWKINS
ANDY.HAWKINS@FOUNDRYCOMMERCIAL.COM
407.540.7749

BRETT HARTUNG
BRETT.HARTUNG@FOUNDRYCOMMERCIAL.COM
407.540.7897

FOUNDRY
COMMERCIAL

foundrycommercial.com

