

990 HIGHLAND DRIVE
SOLANA BEACH, CA 92075



OCEAN VIEW OFFICE SUITES FOR LEASE

1,060 to 5,030 rsf

DEL MAR CORPORATE CENTER



PROPERTY FEATURES

- Three-story, 48,459 RSF atrium-style office building
- Immediate access to Interstate 5 via Via De La Valle
- Panoramic Ocean and Del Mar Race Track views
- Atrium design provides abundant natural light
- Outdoor patio areas
- Operable windows in select suites for ocean breezes
- Walking distance to numerous retail amenities
- Covered parking available on site
- On-site ownership and property management



SUITE	SIZE	RATE	FEATURES
104-C	1,060 rsf	\$2.30 psf	Reception, 2 private offices, sublease (Expires 12/31/2013)
302-310	5,030 rsf	\$2.75 psf	Spectacular ocean views. Divisible to 1,612 rsf, 1,212, rsf or 2,206 rsf.
312	1,506 rsf	\$2.10 psf	Reception, conference room or large office, 3 private offices, private patio

For more information, please contact:

JOHN HOFFMANN
Director
(760) 402 8950
john.hoffmann@cushwake.com
Lic. #01023816

MICHAEL DYER
Associate Director
(858) 334 4021
michael.dyer@cushwake.com
Lic. #00931919

CUSHMAN & WAKEFIELD OF SAN DIEGO, INC.
Lic. #01329963
5800 Armada Drive, Suite 101
Carlsbad, CA 92008
www.cushmanwakefield.com

The depiction in the included photograph of any person, entity, sign, logo or property, other than Cushman & Wakefield's (C&W) client and the property offered by C&W, is incidental only, and is not intended to connote any affiliation, connection, association, sponsorship or approval by or between that which is incidentally depicted and C&W or its client. This listing shall not be deemed an offer to lease, sublease or sell such property; and, in the event of any transaction for such property, no commission shall be earned by or payable to any cooperating broker except if otherwise provided pursuant to the express terms, rates and conditions of C&W's agreement with its principal, if, as and when such commission (if any) is actually received from such principal. (A copy of the rates and conditions referred to above with respect to this property is available upon request.)

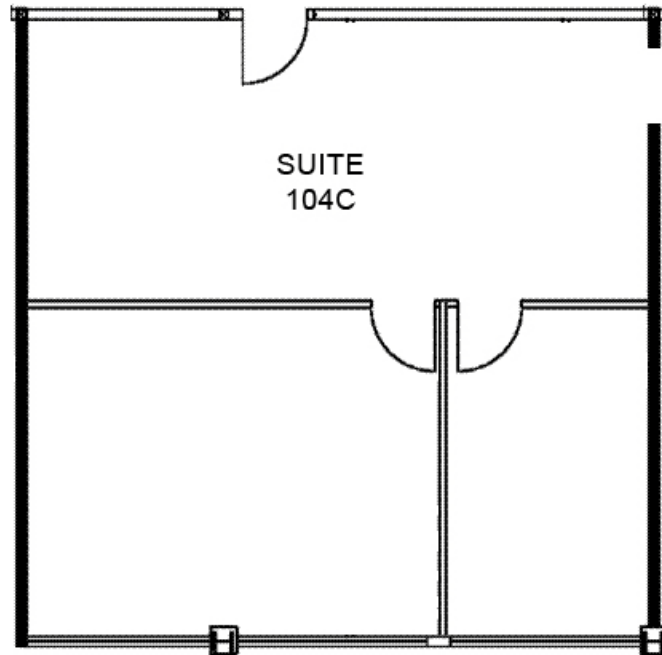
DEL MAR CORPORATE CENTER

Office Suites for Lease

1,060 to 5,030 rsf
AVAILABLE



FIRST FLOOR AVAILABILITY



SUITE 104-C | 1,060 RSF

For more information, please contact:

JOHN HOFFMANN
Director
(760) 402 8950
john.hoffmann@cushwake.com
Lic. #01023816

MICHAEL DYER
Associate Director
(858) 334 4021
michael.dyer@cushwake.com
Lic. #00931919

CUSHMAN & WAKEFIELD OF SAN DIEGO, INC.
Lic. #01329963
5800 Armada Drive, Suite 101
Carlsbad, CA 92008
www.cushmanwakefield.com

The depiction in the included photograph of any person, entity, sign, logo or property, other than Cushman & Wakefield's (C&W) client and the property offered by C&W, is incidental only, and is not intended to connote any affiliation, connection, association, sponsorship or approval by or between that which is incidentally depicted and C&W or its client. This listing shall not be deemed an offer to lease, sublease or sell such property; and, in the event of any transaction for such property, no commission shall be earned by or payable to any cooperating broker except if otherwise provided pursuant to the express terms, rates and conditions of C&W's agreement with its principal, if, as and when such commission (if any) is actually received from such principal. (A copy of the rates and conditions referred to above with respect to this property is available upon request.)

DEL MAR CORPORATE CENTER

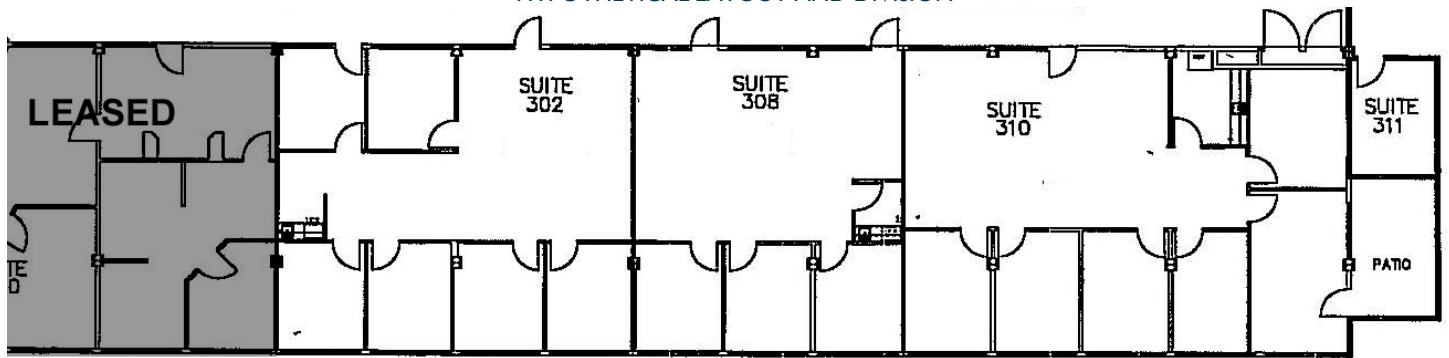
Office Suites for Lease

1,060 to 5,030 rsf
AVAILABLE



THIRD FLOOR AVAILABILITY

SUITES 302-310 | UP TO 5,030 RSF CONTIGUOUS SPACE
HYPOTHETICAL LAYOUT AND DIVISION



SUITE 302 - 1,612 RSF

SUITE 308 - 1,212 RSF

SUITE 310 - 2,206 RSF

For more information, please contact:

JOHN HOFFMANN
Director
(760) 402 8950
john.hoffmann@cushwake.com
Lic. #01023816

MICHAEL DYER
Associate Director
(858) 334 4021
michael.dyer@cushwake.com
Lic. #00931919

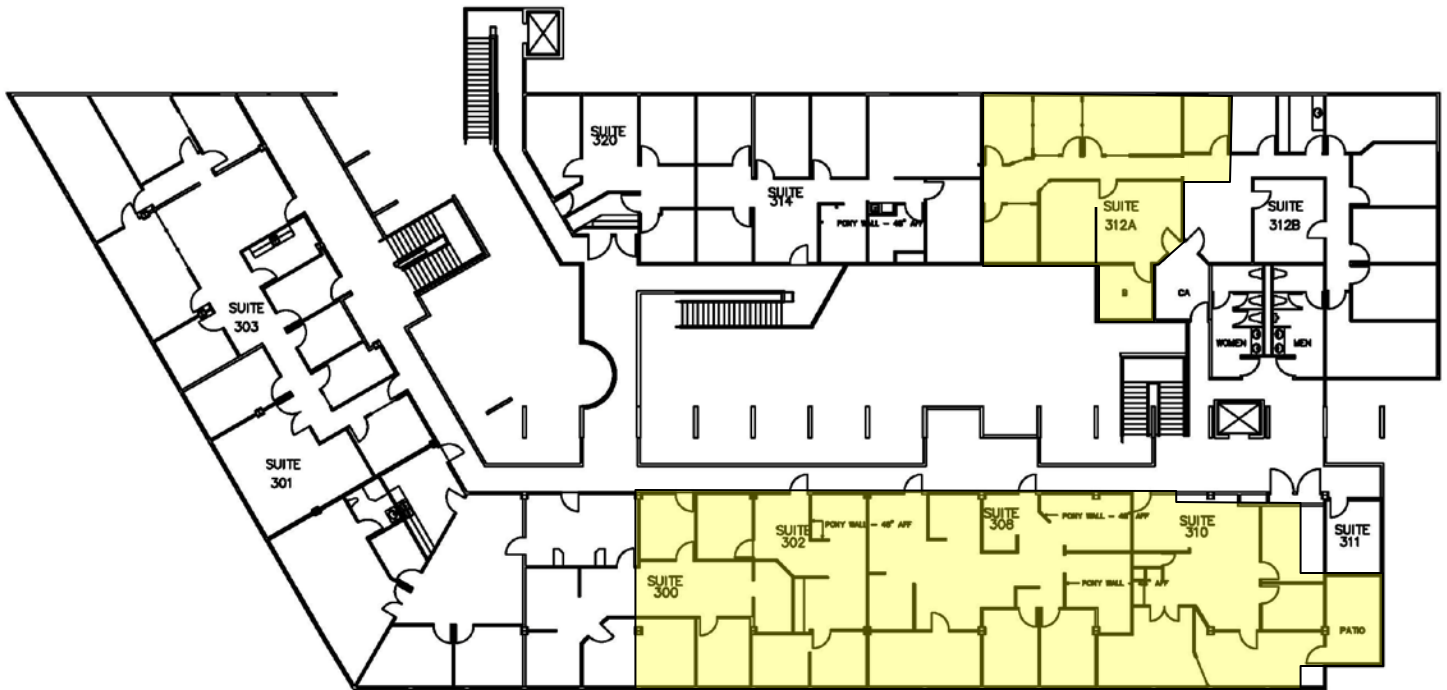
CUSHMAN & WAKEFIELD OF SAN DIEGO, INC.
Lic. #01329963
5800 Armada Drive, Suite 101
Carlsbad, CA 92008
www.cushmanwakefield.com

The depiction in the included photograph of any person, entity, sign, logo or property, other than Cushman & Wakefield's (C&W) client and the property offered by C&W, is incidental only, and is not intended to connote any affiliation, connection, association, sponsorship or approval by or between that which is incidentally depicted and C&W or its client. This listing shall not be deemed an offer to lease, sublease or sell such property; and, in the event of any transaction for such property, no commission shall be earned by or payable to any cooperating broker except if otherwise provided pursuant to the express terms, rates and conditions of C&W's agreement with its principal, if, as and when such commission (if any) is actually received from such principal. (A copy of the rates and conditions referred to above with respect to this property is available upon request.)

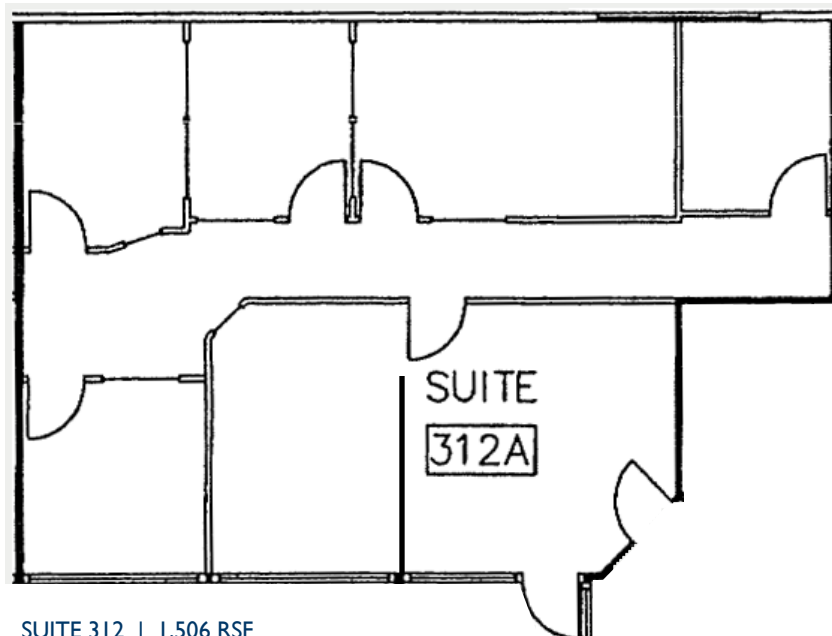
DEL MAR CORPORATE CENTER

Office Suites for Lease

1,060 to 5,030 rsf
AVAILABLE



THIRD FLOOR AVAILABILITY



SUITE 312 | 1,506 RSF

For more information, please contact:

JOHN HOFFMANN
Director
(760) 402 8950
john.hoffmann@cushwake.com
Lic. #01023816

MICHAEL DYER
Associate Director
(858) 334 4021
michael.dyer@cushwake.com
Lic. #00931919

CUSHMAN & WAKEFIELD OF SAN DIEGO, INC.
Lic. #01329963
5800 Armada Drive, Suite 101
Carlsbad, CA 92008
www.cushmanwakefield.com

The depiction in the included photograph of any person, entity, sign, logo or property, other than Cushman & Wakefield's (C&W) client and the property offered by C&W, is incidental only, and is not intended to connote any affiliation, connection, association, sponsorship or approval by or between that which is incidentally depicted and C&W or its client. This listing shall not be deemed an offer to lease, sublease or sell such property; and, in the event of any transaction for such property, no commission shall be earned by or payable to any cooperating broker except if otherwise provided pursuant to the express terms, rates and conditions of C&W's agreement with its principal, if, as and when such commission (if any) is actually received from such principal. (A copy of the rates and conditions referred to above with respect to this property is available upon request.)

DEL MAR CORPORATE CENTER

Office Suites for Lease

1,060 to 5,030 rsf
AVAILABLE



For more information, please contact:

JOHN HOFFMANN
Director
(760) 402 8950
john.hoffmann@cushwake.com
Lic. #01023816

MICHAEL DYER
Associate Director
(858) 334 4021
michael.dyer@cushwake.com
Lic. #00931919

CUSHMAN & WAKEFIELD OF SAN DIEGO, INC.
Lic. #01329963
5800 Armada Drive, Suite 101
Carlsbad, CA 92008
www.cushmanwakefield.com

The depiction in the included photograph of any person, entity, sign, logo or property, other than Cushman & Wakefield's (C&W) client and the property offered by C&W, is incidental only, and is not intended to connote any affiliation, connection, association, sponsorship or approval by or between that which is incidentally depicted and C&W or its client. This listing shall not be deemed an offer to lease, sublease or sell such property; and, in the event of any transaction for such property, no commission shall be earned by or payable to any cooperating broker except if otherwise provided pursuant to the express terms, rates and conditions of C&W's agreement with its principal, if, as and when such commission (if any) is actually received from such principal. (A copy of the rates and conditions referred to above with respect to this property is available upon request.)