



**CUSHMAN &
WAKEFIELD**

FOR LEASE

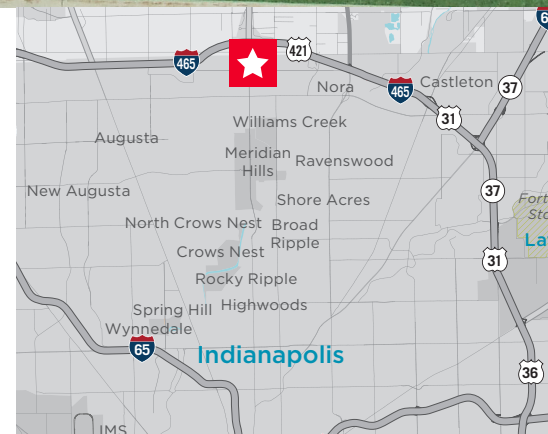
9450 N. Meridian Street
Indianapolis, IN 46260



4,583 SF Total Available
Lease Rate: \$24.50/sf Full Service

PROPERTY HIGHLIGHTS

- Building signage available
- Meridian Street address
- Unbeatable access to I-465
- McAlister's Deli and FedEx office in the building
- Newk's Eatery and McDonald's on the same corner
- Within one block: Starbucks, Lifetime Fitness, Another Broken Egg, Granite City, Kona Jack's, Daddy Jack's, Firebirds Grill, Drury Inn and Shell Gas Station



Bennett Williams
Director
+1 317 639 0442
bennett.williams@cushwake.com

Megan Cuvelier
Senior Associate
+1 317 352 5422
megan.cuvelier@cushwake.com

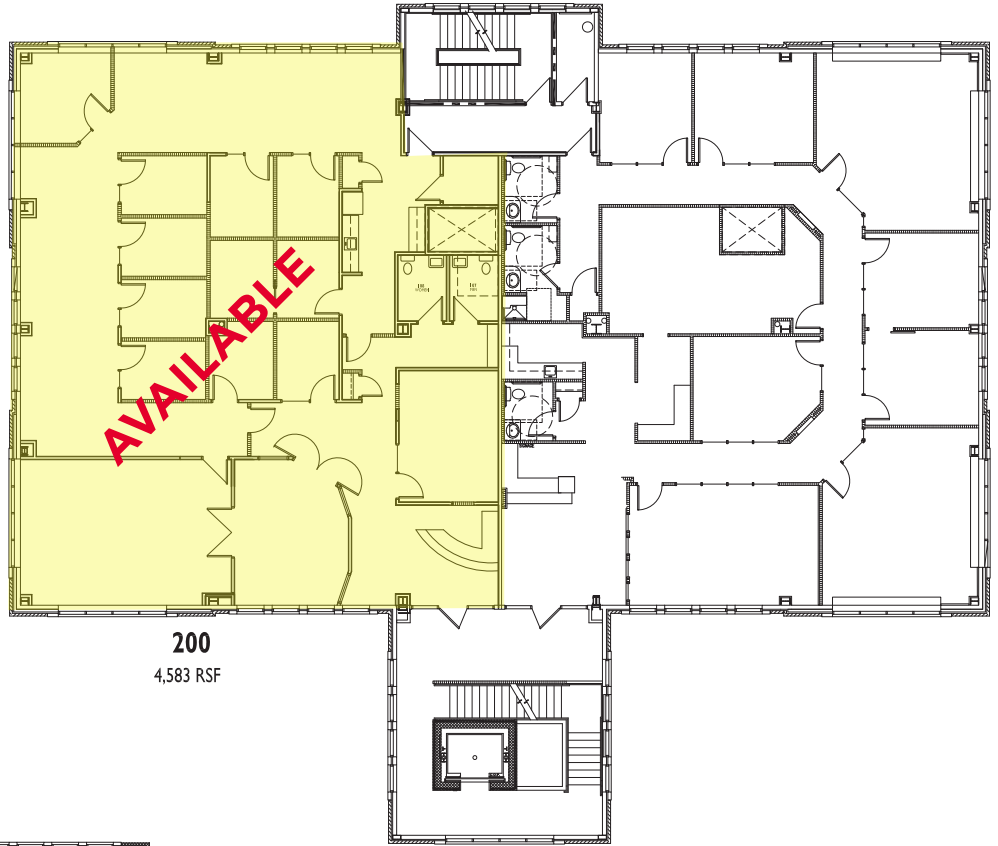
One American Square, Suite 1800
Indianapolis, IN
Main +1 1 317 634 6363
Fax +1 317 639 0504
cushmanwakefield.com

FOR LEASE

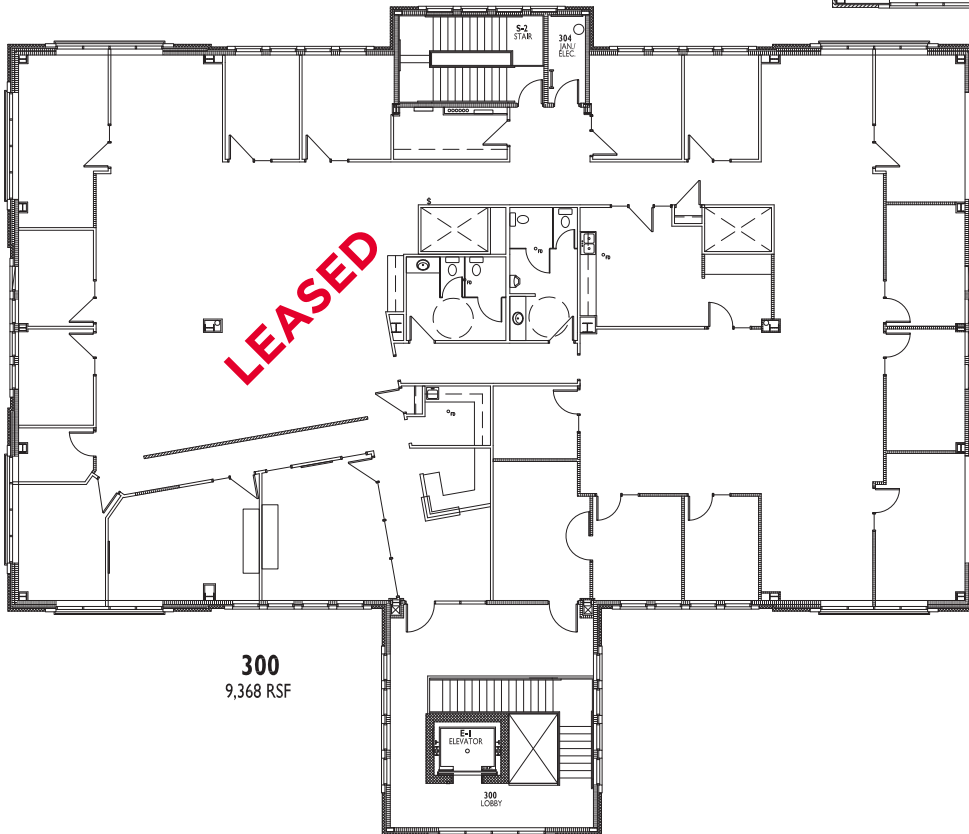
9450 N. Meridian Street

Indianapolis, IN 46260

FLOOR PLANS

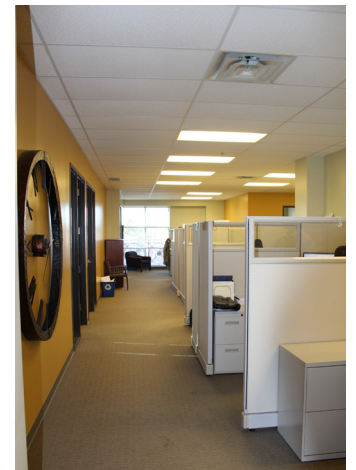


200
4,583 RSF



300
9,368 RSF

PHOTOS





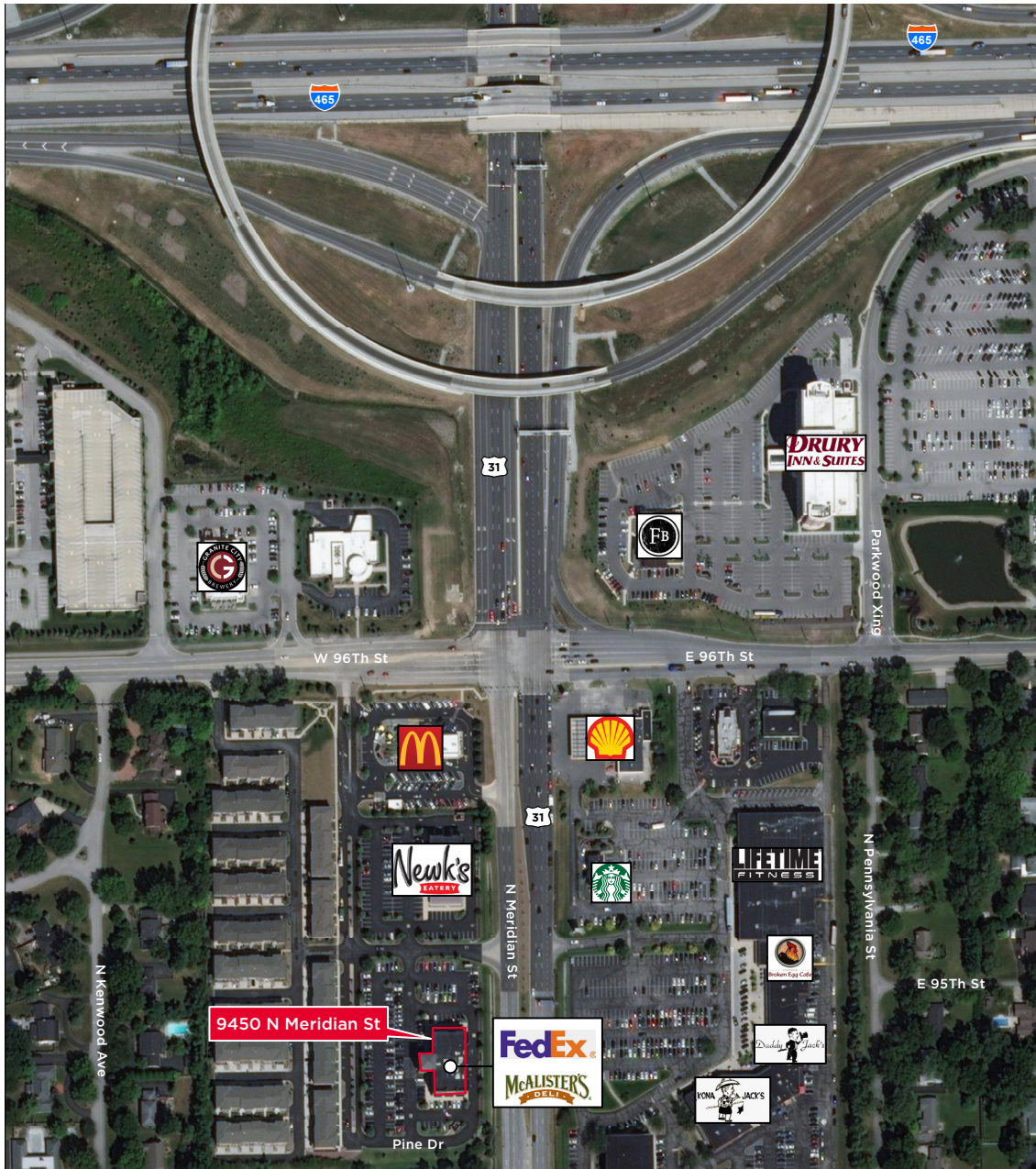
CUSHMAN & WAKEFIELD

FOR LEASE

9450 N. Meridian Street

Indianapolis, IN 46260

AERIAL



Bennett Williams
Director
+1 317 639 0442
bennett.williams@cushwake.com

Megan Cuvelier
Senior Associate
+1 317 352 5422
megan.cuvelier@cushwake.com

One American Square, Suite 1800
Indianapolis, IN
Main +1 1 317 634 6363
Fax +1 317 639 0504
cushmanwakefield.com

©2019 Cushman & Wakefield. All rights reserved. The information contained in this communication is strictly confidential. This information has been obtained from sources believed to be reliable but has not been verified. NO WARRANTY OR REPRESENTATION, EXPRESS OR IMPLIED, IS MADE AS TO THE CONDITION OF THE PROPERTY (OR PROPERTIES) REFERENCED HEREIN OR AS TO THE ACCURACY OR COMPLETENESS OF THE INFORMATION CONTAINED HEREIN, AND SAME IS SUBMITTED SUBJECT TO ERRORS, OMISSIONS, CHANGE OF PRICE, RENTAL OR OTHER CONDITIONS, WITHDRAWAL WITHOUT NOTICE, AND TO ANY SPECIAL LISTING CONDITIONS IMPOSED BY THE PROPERTY OWNER(S). ANY PROJECTIONS, OPINIONS OR ESTIMATES ARE SUBJECT TO UNCERTAINTY AND DO NOT SIGNIFY CURRENT OR FUTURE PROPERTY PERFORMANCE.