



**PREMIER
PROPERTIES**
COMMERCIAL
REAL ESTATE

FOR LEASE

2225 EL CAMINO REAL

Palo Alto, CA

±1,860 Sq. Ft. Office / Medical (with CUP)



BRAD EHIKIAN

Partner

dre license #01736391

☎ | 650.618.3001

✉ | brad.ehikian@prprop.com

JON GOLDMAN

Partner

dre license #01295503

☎ | 650.618.3003

✉ | jon.goldman@prprop.com

JESSE EBNER

Vice President

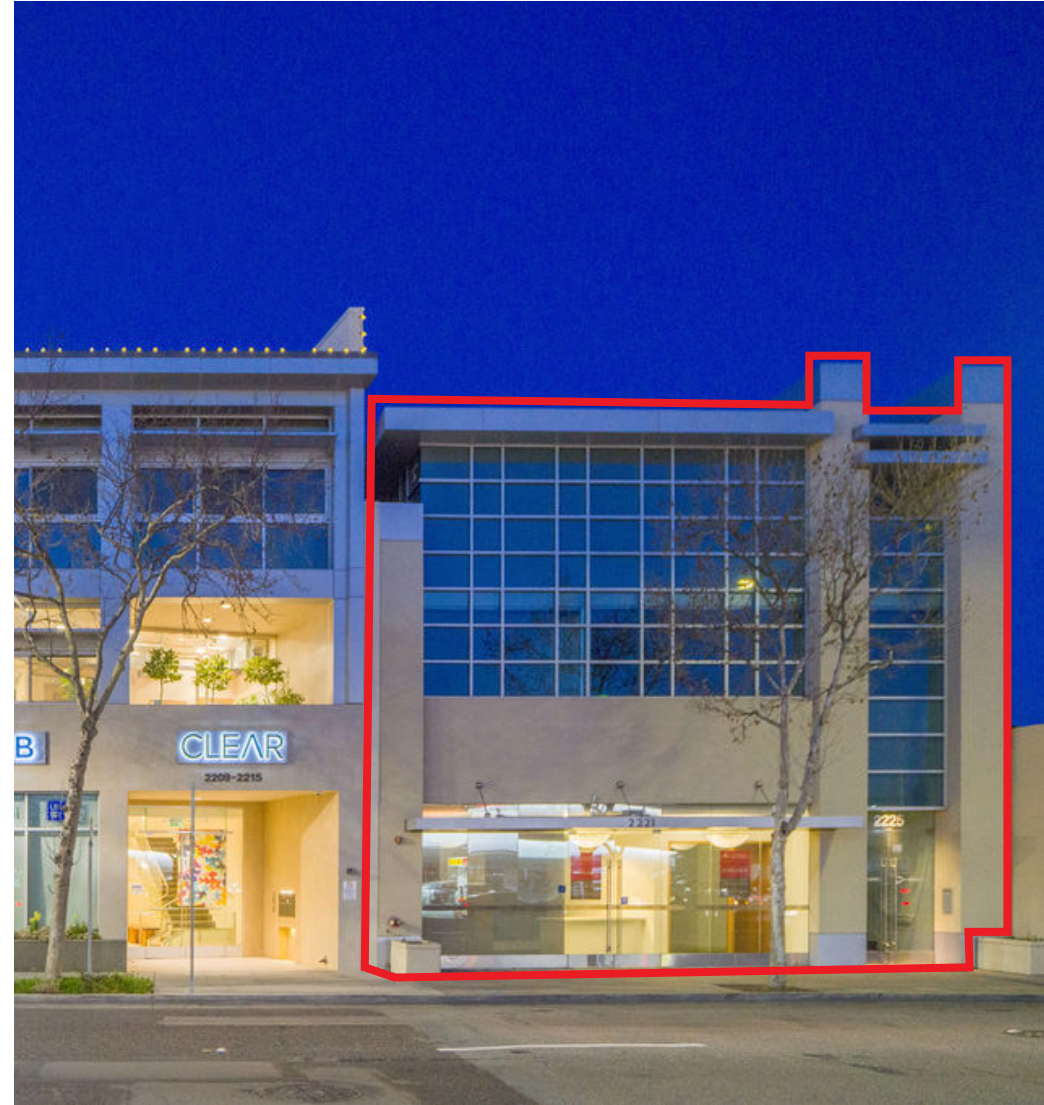
dre license #02055989

☎ | 650.618.3017

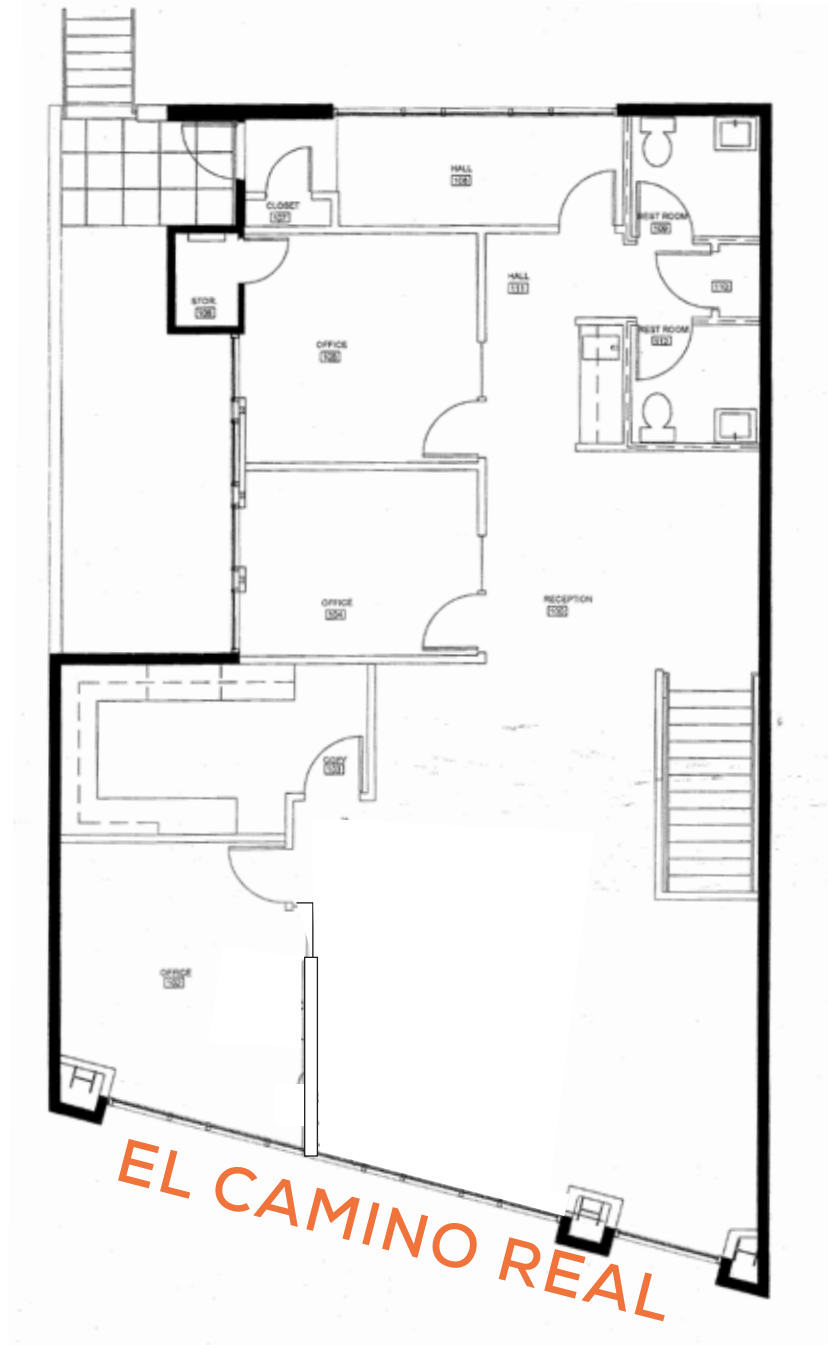
✉ | jesse.ebner@prprop.com

PROPERTY DESCRIPTION

- ▮ High-Visibility Location on El Camino Real
- ▮ Second Floor Office Suite
- ▮ Medical/Dental Office Allowed with CUP
- ▮ Private Ground Floor Entrance
- ▮ Three Private Offices / Meeting Rooms
- ▮ In-Suite Restrooms
- ▮ Two (2) Parking Spaces Behind Building
- ▮ Excellent Signage Opportunities
- ▮ Large Glass Windows with Abundant Natural Light
- ▮ Walking Distance to Caltrain Station
- ▮ Adjacent to California Ave Business District, Restaurants, & Amenities
- ▮ Available Immediately



FLOOR PLAN



**PREMIER
PROPERTIES**
COMMERCIAL
REAL ESTATE

BRAD EHIKIAN
Partner
dre license #01736391
☎ | 650.618.3001
✉ | brad.ehikian@prprop.com

JON GOLDMAN
Partner
dre license #01295503
☎ | 650.618.3003
✉ | jon.goldman@prprop.com

JESSE EBNER
Vice President
dre license #02055989
☎ | 650.618.3017
✉ | jesse.ebner@prprop.com

AMENITIES MAP

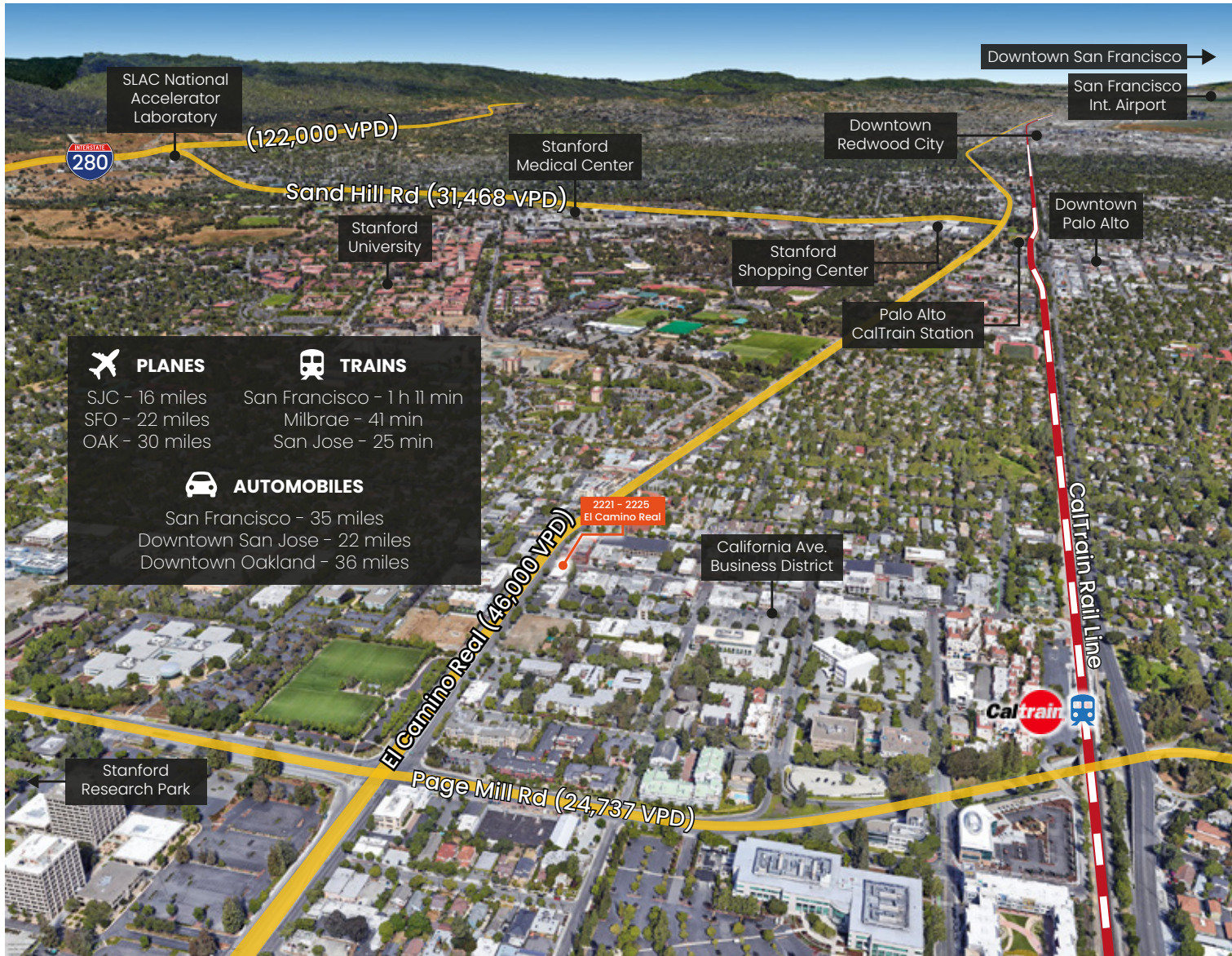





BRAD EHIKIAN
Partner
dre license #01736391
☎ | 650.618.3001
✉ | brad.ehikian@prprop.com

JON GOLDMAN
Partner
dre license #01295503
☎ | 650.618.3003
✉ | jon.goldman@prprop.com

JESSE EBNER
Vice President
dre license #02055989
☎ | 650.618.3017
✉ | jesse.ebner@prprop.com

TRANSPORTATION AERIAL



 PLANES	 TRAINS
SJC - 16 miles	San Francisco - 1 h 11 min
SFO - 22 miles	Milbrae - 41 min
OAK - 30 miles	San Jose - 25 min
 AUTOMOBILES	
San Francisco - 35 miles	
Downtown San Jose - 22 miles	
Downtown Oakland - 36 miles	



BRAD EHIKIAN
 Partner
 dre license #01736391
 ☎ | 650.618.3001
 ✉ | brad.ehikian@prprop.com

JON GOLDMAN
 Partner
 dre license #01295503
 ☎ | 650.618.3003
 ✉ | jon.goldman@prprop.com

JESSE EBNER
 Vice President
 dre license #02055989
 ☎ | 650.618.3017
 ✉ | jesse.ebner@prprop.com

DEMOGRAPHICS



ONE-MILE POPULATION: 22,904

MEDIAN AGE

29.1

MEDIAN NET



HOUSEHOLD SIZE



INCOME



Per Capita Income

\$68,615



Median Net Worth

\$128,919

White Collar Employees:

91%

Blue Collar Employees:

2%

Services:

7%

Unemployment Rate:

3.4%

Total Employees:

20,162

MAJOR EMPLOYERS:

Data for all businesses in area	1 mile	3 miles	5 miles
Total Businesses:	1,385	8,693	14,581
Total Employees:	20,162	144,382	219,553
Total Residential Population:	22,904	141,298	288,069
Employee/Residential Population Ratio (per 100 Residents)	91	84	78



BRAD EHIKIAN
Partner
dre license #01736391
☎ | 650.618.3001
✉ | brad.ehikian@prprop.com

JON GOLDMAN
Partner
dre license #01295503
☎ | 650.618.3003
✉ | jon.goldman@prprop.com

JESSE EBNER
Vice President
dre license #02055989
☎ | 650.618.3017
✉ | jesse.ebner@prprop.com