

6,500 SF Industrial Building For Sale

994 Stuyvesant Avenue, Irvington, NJ



Summary

- Block 315, Lot 22
- Zoned Industrial
- Fenced Lot
- 2 Drive-Ins
- 18' Clear Ceiling
- 600 SF Office

Location

- Close to Many Major Highways
- Minutes to I-78 & Garden State Parkway
- 12 Minutes to Newark Liberty International Airport

Exclusive Brokers

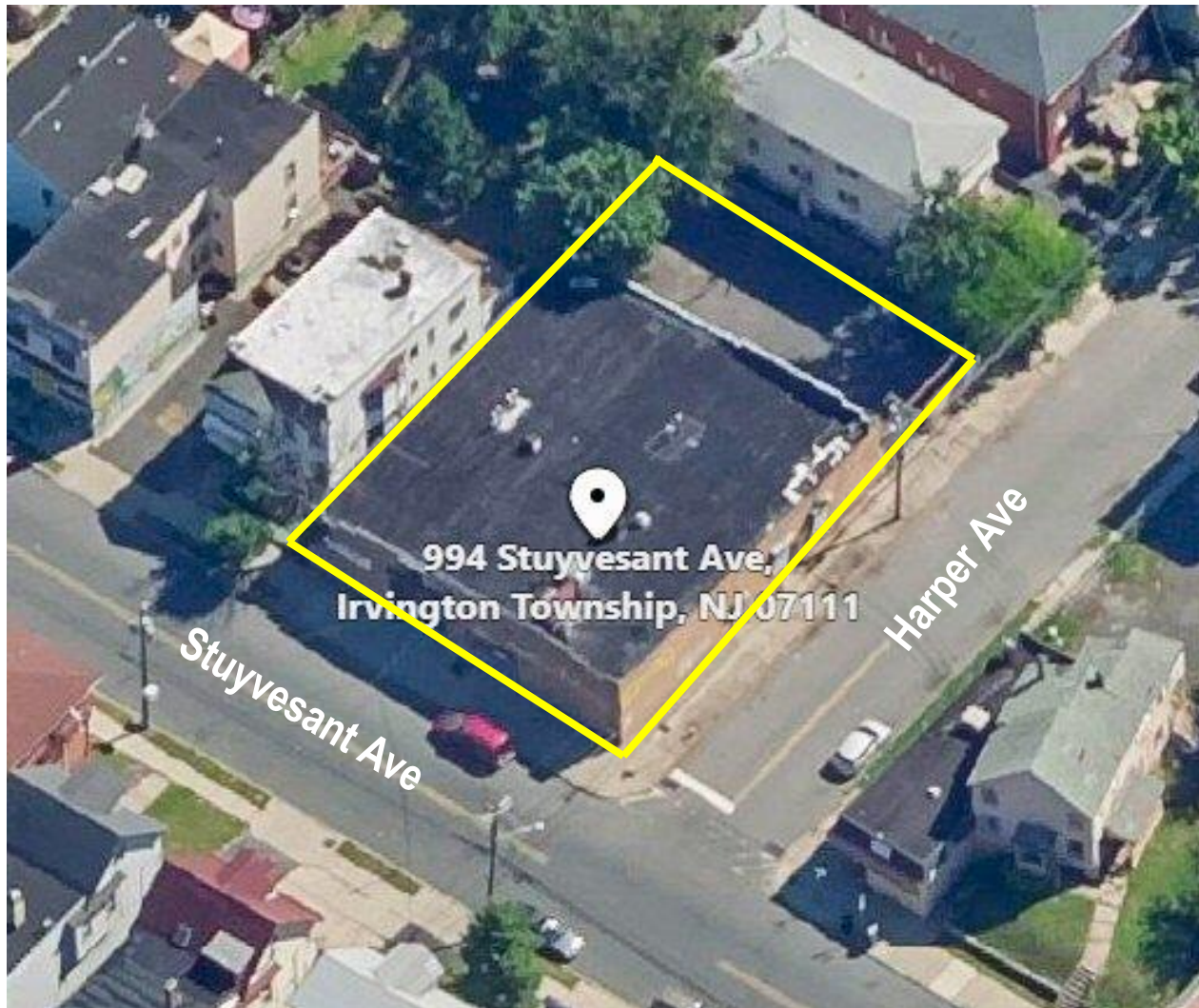
Suzanne Tharaldsen, Vice President | 908.577.1676 | suzanne@bussel.com
Jim Hodgkins, Vice President | 908.276.4100 | jhodgkins@bussel.com

Bussel Realty Corp. | 2 Ethel Road, Suite 202A, Edison, NJ 08817 | 732.287.3777 | Bussel.com

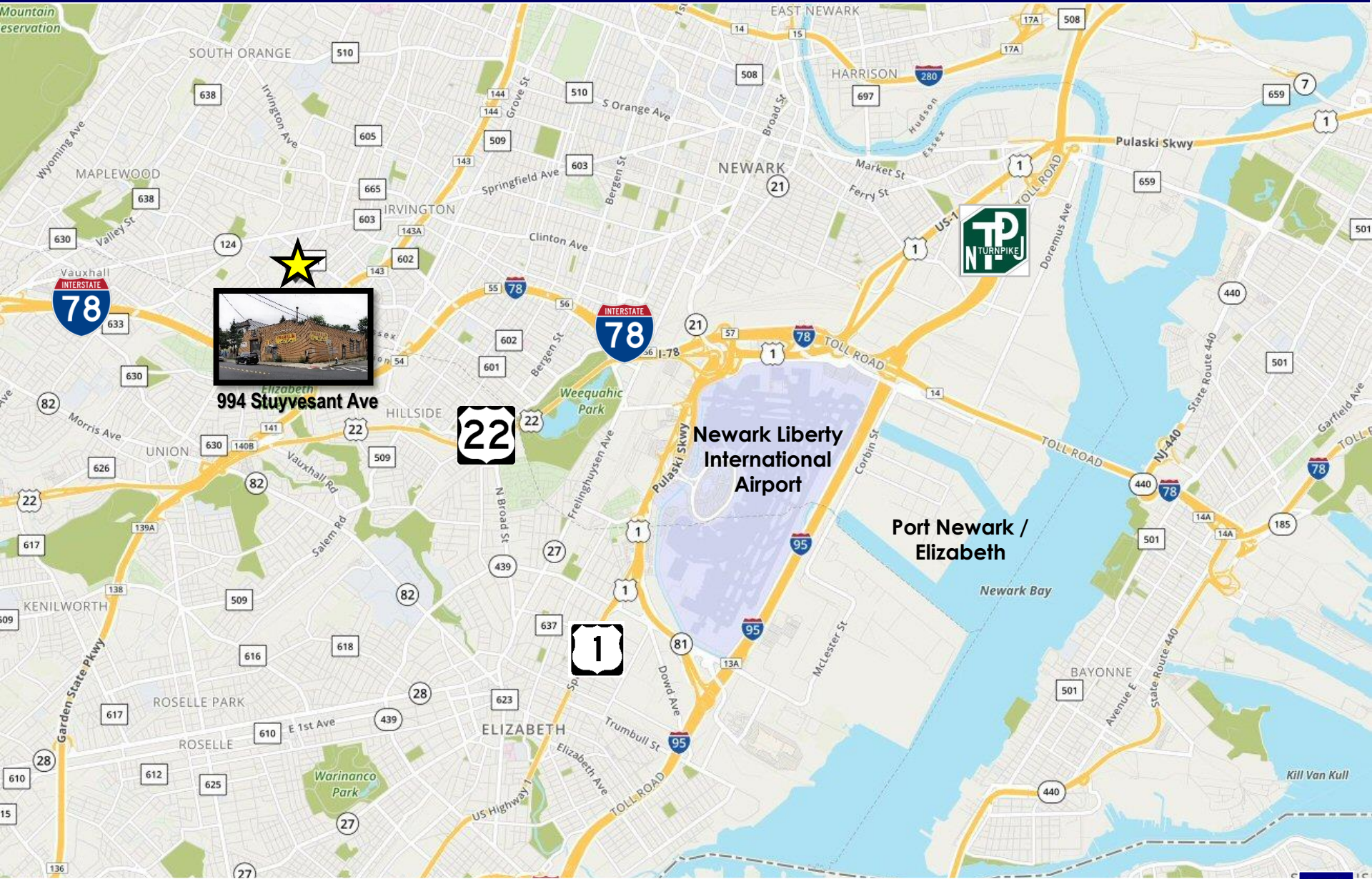
Information herein obtained from sources deemed reliable, but no guarantee of its accuracy is made by the Company. Subject to error, omission or withdrawal without notice.

994 Stuyvesant Avenue, Irvington, NJ

6,500 SF Industrial Building For Sale



994 Stuyvesant Avenue, Irvington, NJ



994 Stuyvesant Ave