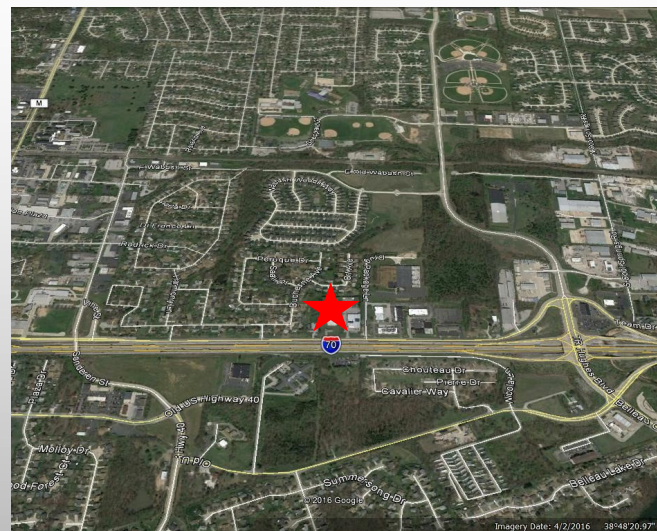




Commercial Land

- 2.52 Acres fronting Highway 70 (O'Fallon, Missouri)
- Located between TR Hughes Blvd. & Main Street (North side of Highway 70)
- Direct visibility / easy access to/from Highway 70
- Pad-ready site with all public utilities
- Flat topography—detention installed
- Zoned C-3 (highway commercial)
- Located next to White Auto-Body
- Value on land only
- Excellent site for hotel, automotive, office/warehouse, showroom and other commercial uses

PRICE REDUCED!-\$550,000



Leahy Properties, LLC

Harry Daw

314-833.8335

hdaw@leahypropertiesllc.com

www.leahypropertiesllc.com

Leahy Properties, LLC

Sammye Leahy

314.833.8335

sleahy@leahypropertiesllc.com

www.leahypropertiesllc.com