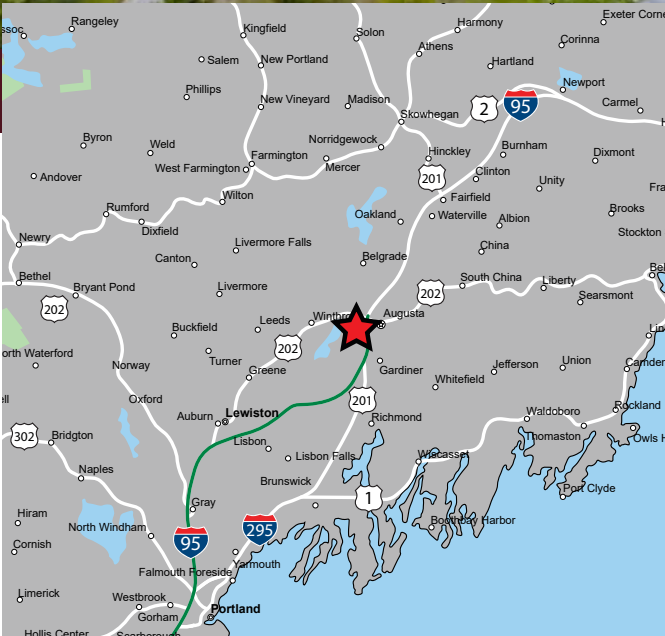




TURNPIKE MALL

10-42 Whitten Road, Augusta, Maine

NEW DEALS WITH HOBBY LOBBY AND HARBOR FREIGHT TOOLS



AVAILABLE FOR LEASE

PROPERTY HIGHLIGHTS

- » 2,000 SF up to 25,846 SF Available For Lease
- » Join Recently Opened ConvenientMD, Hobby Lobby & Harbor Freight Tools
- » Conveniently Located at Exit 109 off I-95
- » Excellent Visibility & Access
- » Dominant Regional Trade Area
- » Strong Co-Tenancy with Petco, Texas Roadhouse, ConvenientMD, Hobby Lobby and Harbor Freight Tools



EASTERN
RETAIL PROPERTIES

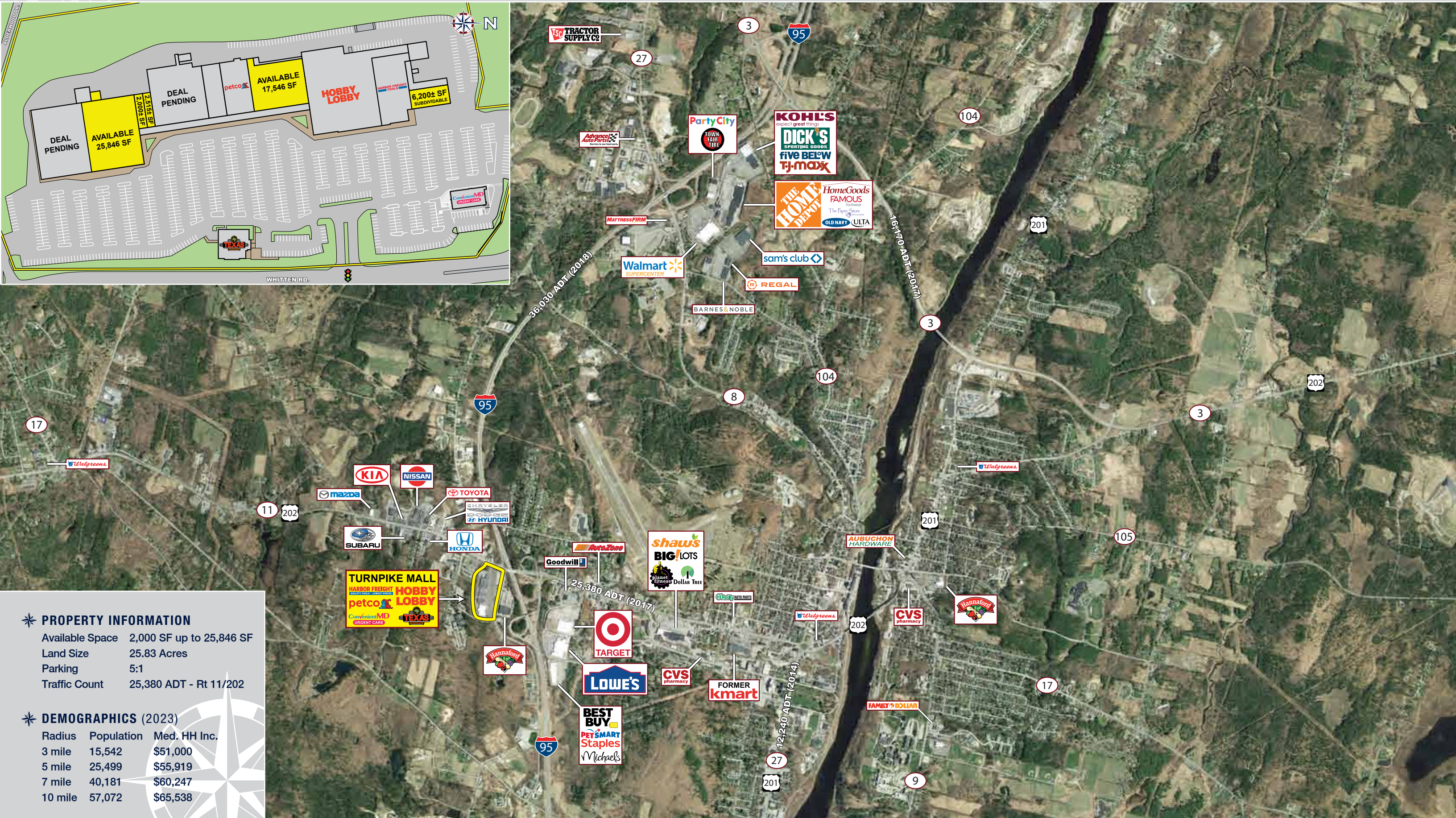
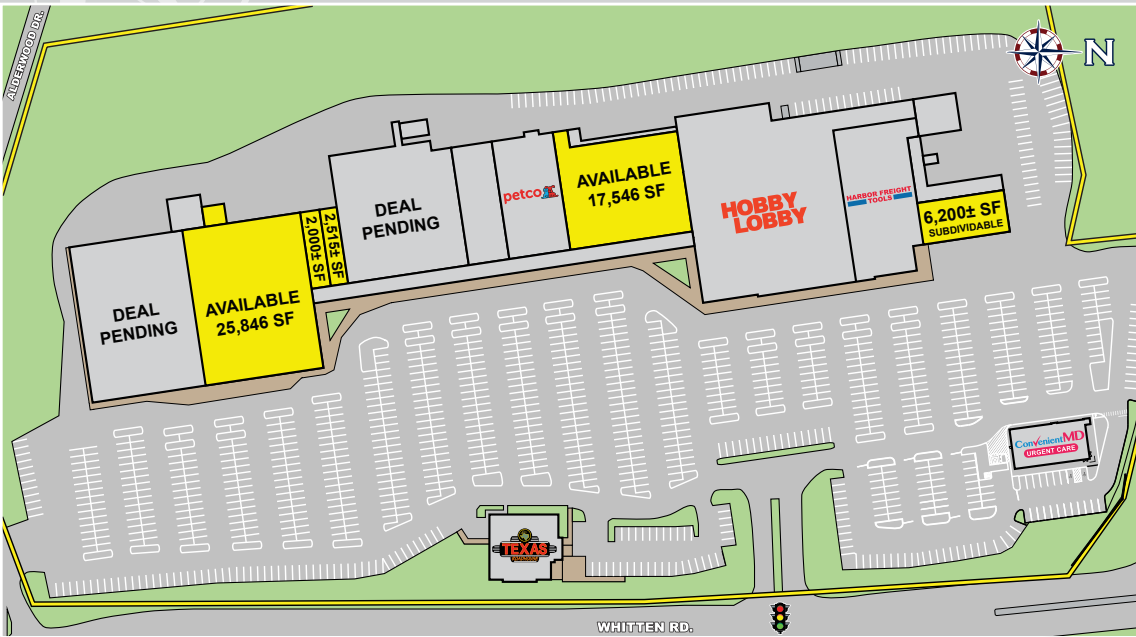
SUNEQUITY
PARTNERS

TURNPIKE MALL

10-42 Whitten Road, Augusta, Maine



EASTERN **SUNEQUITY**
RETAIL PROPERTIES PARTNERS



PROPERTY INFORMATION

Available Space	2,000 SF up to 25,846 SF
Land Size	25.83 Acres
Parking	5:1
Traffic Count	25,380 ADT - Rt 11/202

DEMOGRAPHICS (2023)

Radius	Population	Med. HH Inc.
3 mile	15,542	\$51,000
5 mile	25,499	\$55,919
7 mile	40,181	\$60,247
10 mile	57,072	\$65,538



Turnpike Mall - 10-42 Whitten Road, Augusta, Maine



FOR MORE INFORMATION CONTACT:

Mike Hotarek

781.849.9017

mhotarek@easternretail.com

Andrew Bonica

781.849.9011

abonica@easternretail.com

Joe Morrison

781.264.6225

jmorrison@easternretail.com

P 781.849.9010 + F 781.849.9050 + www.easternretail.com + 25 Braintree Hill Office Park, Suite 305 + Braintree, MA 02184

The information above has been obtained from sources believed reliable. While we do not doubt its accuracy, we have not verified it and make no guarantee, warranty or representation about it. It is your responsibility to independently confirm its accuracy and completeness. Any projections, opinions, assumptions or estimates used are for example only and do not represent the current or future performance of the property. The value of this transaction to you depends on tax and other factors, which should be evaluated by your tax and financial advisors. You and your advisors should conduct a careful, independent investigation of the property to determine to your satisfaction, the suitability of the property for your needs.