

## Fairway Center

14220-14240  
Interurban Avenue South  
Tukwila, WA

### High Quality Office Space

Space available:  
Approximately 7,696 RSF -  
second floor / can be demised  
(available 6/1/18) can also be  
expanded to approx 9,338 RSF

Excellent location provides  
access to I-405 and I-5 and is 5  
minutes to SeaTac Airport

Metro bus stop adjacent to  
property and minutes to the  
Link Light Rail station on  
International Blvd

Fitness center / showers onsite

Interurban Trail access

Abundant free parking

\$24.00 PSF, full service



### Location



### Contact

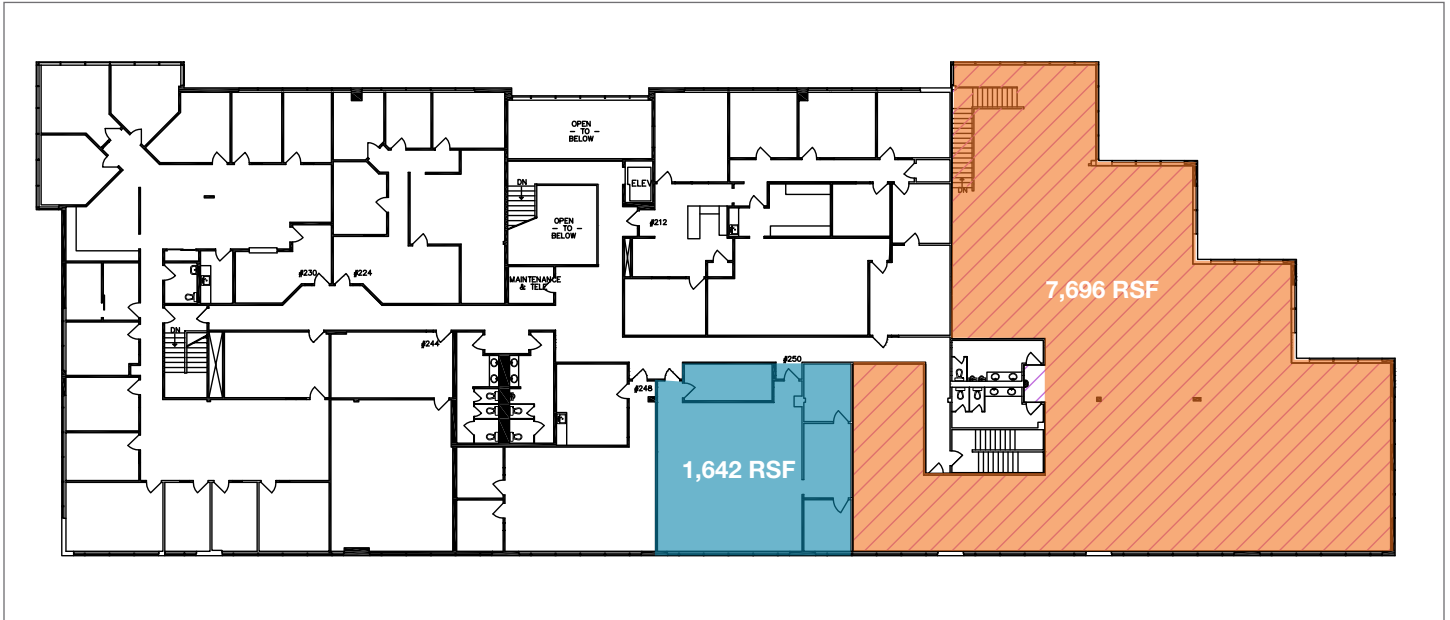
**Brian Clapp**  
206.248.7316  
bclapp@kiddermathews.com

**Matt Wood, SIOR**  
206.248.7306  
mwood@kiddermathews.com

**Todd Battison**  
206.296.9621  
toddb@kiddermathews.com

## Fairway Center

Second Floor Space - Approx 9,338 RSF (7,696 + 1,642 RSF)



Second Floor Office Space - 7,696 RSF



Site Plan



### Contact

**Brian Clapp**  
206.248.7316  
bclapp@kiddermathews.com

**Matt Wood, SIOR**  
206.248.7306  
mwood@kiddermathews.com

**Todd Battison**  
206.296.9621  
toddb@kiddermathews.com

## Fairway Center



### Contact

**Brian Clapp**  
206.248.7316  
bclapp@kiddermathews.com

**Matt Wood, SIOR**  
206.248.7306  
mwood@kiddermathews.com

**Todd Battison**  
206.296.9621  
toddb@kiddermathews.com