

# Publix #0019 - Duval Station

731 Duval Station Road  
Jacksonville, FL 32218  
Lat 30.484, Long -81.605

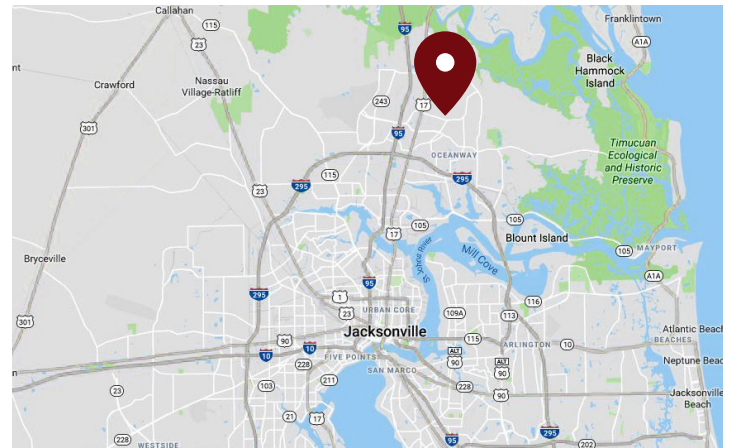
FOR LEASE



1,400 SF INLINE SPACES AVAILABLE

## PROPERTY HIGHLIGHTS

- Publix-Anchored Center
- Located on North Side of Jacksonville in Duval County
- 800,000 SF Amazon Fulfillment Center in Close Proximity with 1,500 Jobs
- Strategically Located Across from First Coast High School with Over 2,300 Students
- Strong Mix of National and Regional Tenants
- \$80K Average Household Income Within Three Miles



DEMOGRAPHICS	1 Mile	3 Miles	5 Miles
Total Population	6,766	32,741	52,240
Daytime Population	5,262	29,864	51,505
Total Households	1,645	11,487	18,787
Avg. HH Income	\$81,533	\$84,659	\$82,818

Data provided by Placer Labs Inc. ([www.placer.ai](http://www.placer.ai)) & Esri

## Tyler Wilkins

407.581.6245 | [twilkins@crossmanco.com](mailto:twilkins@crossmanco.com)

3333 South Orange Avenue, Suite 201, Orlando, FL

Licensed Real Estate Broker. No warranty expressed or implied has been made to the accuracy of the information provided herein, no liability assumed for error or omission.



[www.crossmanco.com](http://www.crossmanco.com)

# Publix #0019 - Duval Station

731 Duval Station Road  
 Jacksonville, FL 32218  
 Lat 30.484, Long -81.605

## SITE PLAN



Suite	Tenant	Size
A	Publix	44,840
5	Edible Arrangements	1,400
7	Golden Ox Liquor	1,400
9	The UPS Store	1,400
11	168 Nails Spa	1,400
13	AVAILABLE	1,400
15	AVAILABLE	1,400
17	Jungle Bowl	1,400
19	Sun Sun Garden Chinese	1,400
21	AVAILABLE	1,400
23	Hair Cuttery	1,400
25	Michael Shaeffer DMD	1,400
30	Workout Anytime	5,600
36	AVAILABLE	1,400
38	Papa John's	1,400
40	Bono's Bar-B-Q	2,800
42	Pinch a Penny	1,400

TOTAL 72,840



**Tyler Wilkins**

407.581.6245 | [twilkins@crossmanco.com](mailto:twilkins@crossmanco.com)

3333 South Orange Avenue, Suite 201, Orlando, FL

Licensed Real Estate Broker. No warranty expressed or implied has been made to the accuracy of the information provided herein, no liability assumed for error or omission.



[www.crossmanco.com](http://www.crossmanco.com)



# Publix #0019 - Duval Station

731 Duval Station Road  
Jacksonville, FL 32218  
Lat 30.484, Long -81.605

## FOOT TRAFFIC OVERVIEW

EST. # OF CUSTOMERS ANNUALLY



EST. # OF VISITS ANNUALLY



AVG. VISITS / CUSTOMER



AVG. LENGTH-OF-STAY / VISIT



TOP 3 DAYS



Sunday	276,944
Saturday	272,552
Friday	249,740

# OF VISITS

TOP 3 HOURS

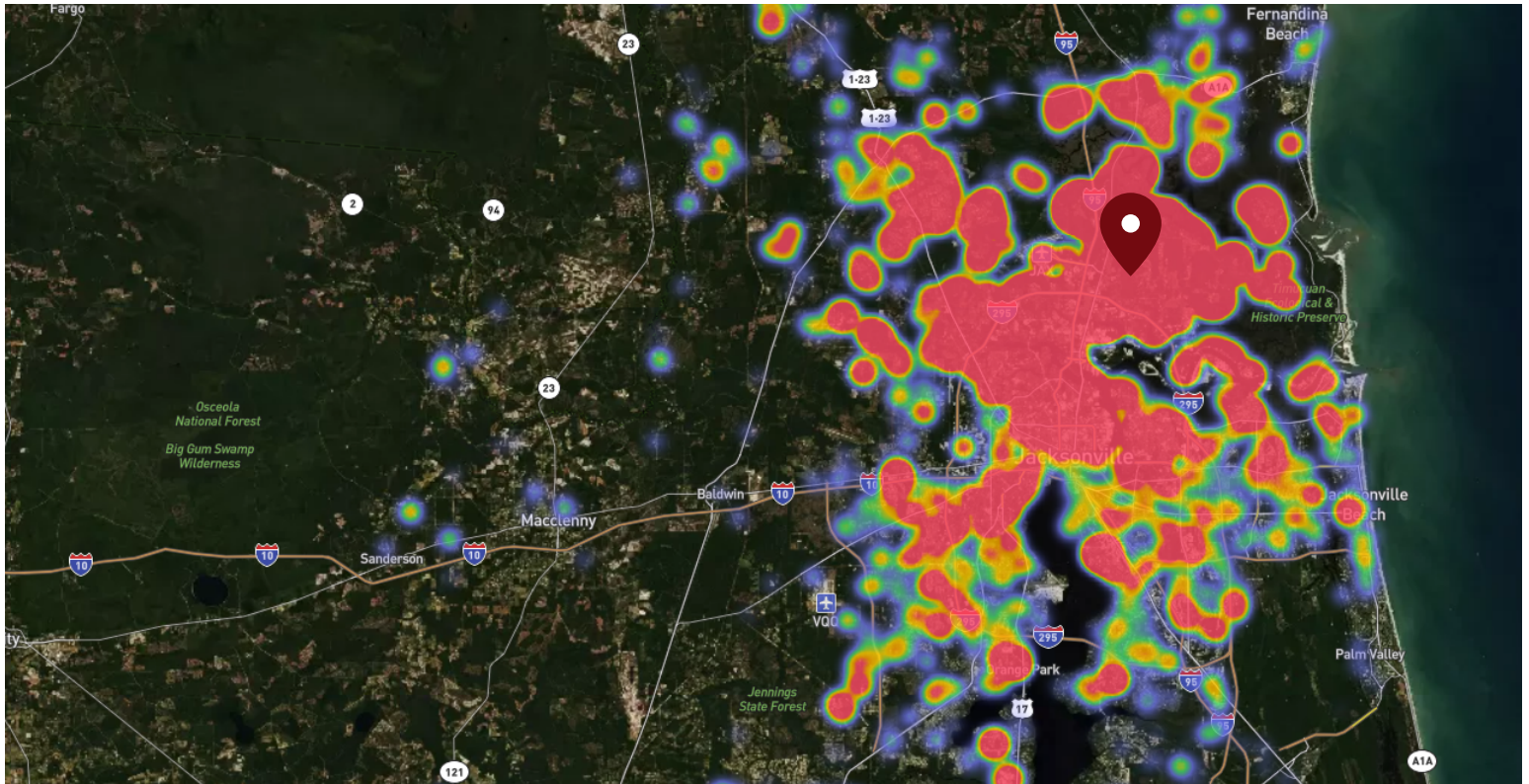


5-6 PM	307,697
4-5 PM	288,227
6-7 PM	280,808

# OF VISITS

Data provided by Placer Labs Inc. (www.placer.ai) Dec 1, 2019 - Nov 30, 2020

## SITE VISIT DENSITY



Red, orange, and yellow colors represent the location of 60% of site visitors

Data provided by Placer Labs Inc. (www.placer.ai)

**Tyler Wilkins**

407.581.6245 | [twilkins@crossmanco.com](mailto:twilkins@crossmanco.com)

3333 South Orange Avenue, Suite 201, Orlando, FL

Licensed Real Estate Broker. No warranty expressed or implied has been made to the accuracy of the information provided herein, no liability assumed for error or omission.



Crossman & Company

[www.crossmanco.com](http://www.crossmanco.com)