

ensonno™



2005 E TECHNOLOGY CIRCLE
TEMPE, ARIZONA

PROPERTY SPECIFICATIONS

2005 E Technology Circle, Tempe

enson[™]

Location

- Within the Arizona State University Research Park, Tempe's largest corporate campus

Building Description

- Single story building
- Built in 1988; with numerous substantial upgrades
- Maintained and operated to Tier III standards

Size

- ±10.98 acres (with ±4.4 acres of expansion area)
- ±60,000 SF
- ±20,000 SF of raised floor area

Power

- ±1.1 MW of critical power
- 3 Utility feeds from two substations

Security

- 7/24/365 manned security, video and dual authentication card access system available

Cooling

- Condenser water cooled CRAC units for raised floor cooling
- Cooling towers located in a storm hardened mechanical yard
- Cooling tower supplied by city water sources and private well backup

Back-up Power

- Multiple N+1 configured generators
- 5 days of stored on-site fuel to supply generator sets
- 8 hour response time to refill tanks from fuel supplier

Network Providers

- Redundant pathways from network vaults into building and MMR
- ATT, CenturyLink, Cox, Verizon, and Zayo

Fire Protection

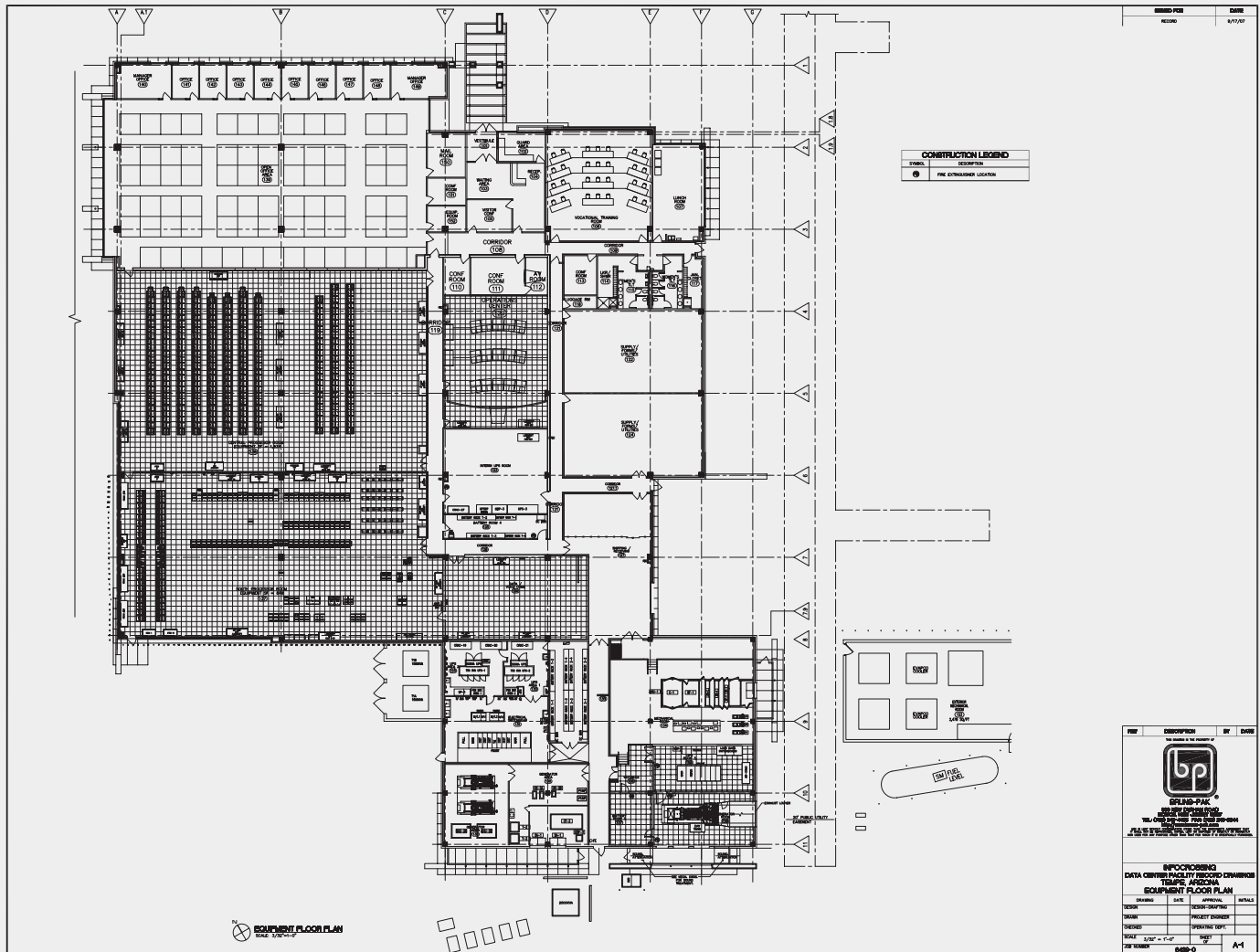
- Fire detection, alarm and suppression system consists of fully automatic dry pipe sprinkler valves
- VESDA system monitors both under and in ceilings of raised floor

PROPERTY SPECIFICATIONS

2005 E Technology Circle, Tempe

ensono™

Site Plan - Mission Critical Space Available



LOCATED IN THE HEART OF THE ASU RESEARCH PARK

Tempe's largest corporate campus

- › A 320-acre Research Park offering a professional business environment, with mature landscaping and three lakes covering eighteen surface acres
- › Home to well-known research and development companies as well as corporate and regional headquarters
- › Located along the Loop 101 Science and Technology corridor with easy access to US 60 and Loop 202
- › Central location in the Southeast Valley also affords access to an abundant and educated workforce, and provides easy 15-minute access to Phoenix Sky Harbor International Airport
- › Recreation facilities include over six miles of surfaced jogging trails and picnic ramadas



ensono™



LEASING
CONTACTS:

Mark Bauer
+1 602 282 6259
mark.bauer@am.jll.com

Sean Reynolds
+1 312 228 3091
sean.reynolds@am.jll.com

Kevin Bauer
+1 602 282 6260
kevin.bauer@am.jll.com

Andy Cvengros
+1 312 228 3202
andy.cvengros@am.jll.com