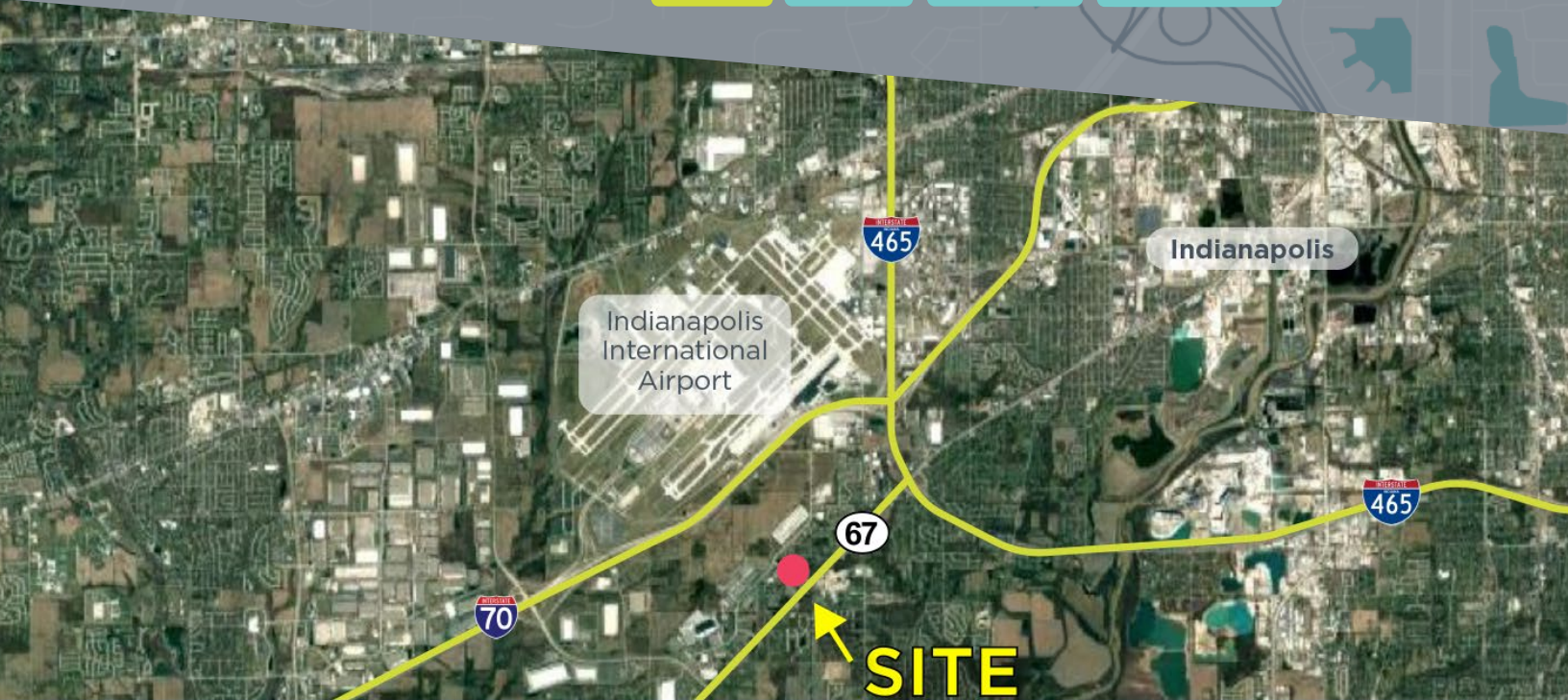


SALE

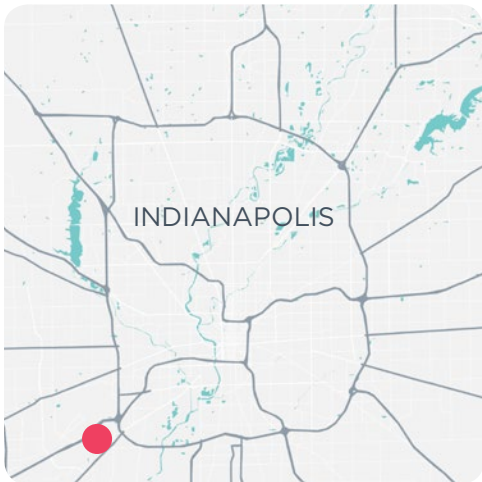
LAND

OFFICE

MEDICAL



AMERIPLEX OFFICE SITES WITH HIGHWAY FRONTAGE



AVAILABLE ACRES

15.510 AC

SALE PRICE

\$1,700,000

Two non-contiguous office sites are now available in AmeriPLEX. One site contains 8.35 acres and is rectangular in shape and offers frontage on State Road 67 (Kentucky Ave.). The second site contains 5.91 acres. Both sites are located at a primary signalized intersection into AmeriPLEX via SR 68 on Gatwick Drive. Sites are zoned for general and medical office and can be purchased separately.

- + State highway frontage
- + Fully improved office sites
- + Close to Indianapolis International Airport
- + Master planned business park
- + Site includes off site drainage
- + Adjacent to medical office building

ROSS RELLER

Senior Vice President

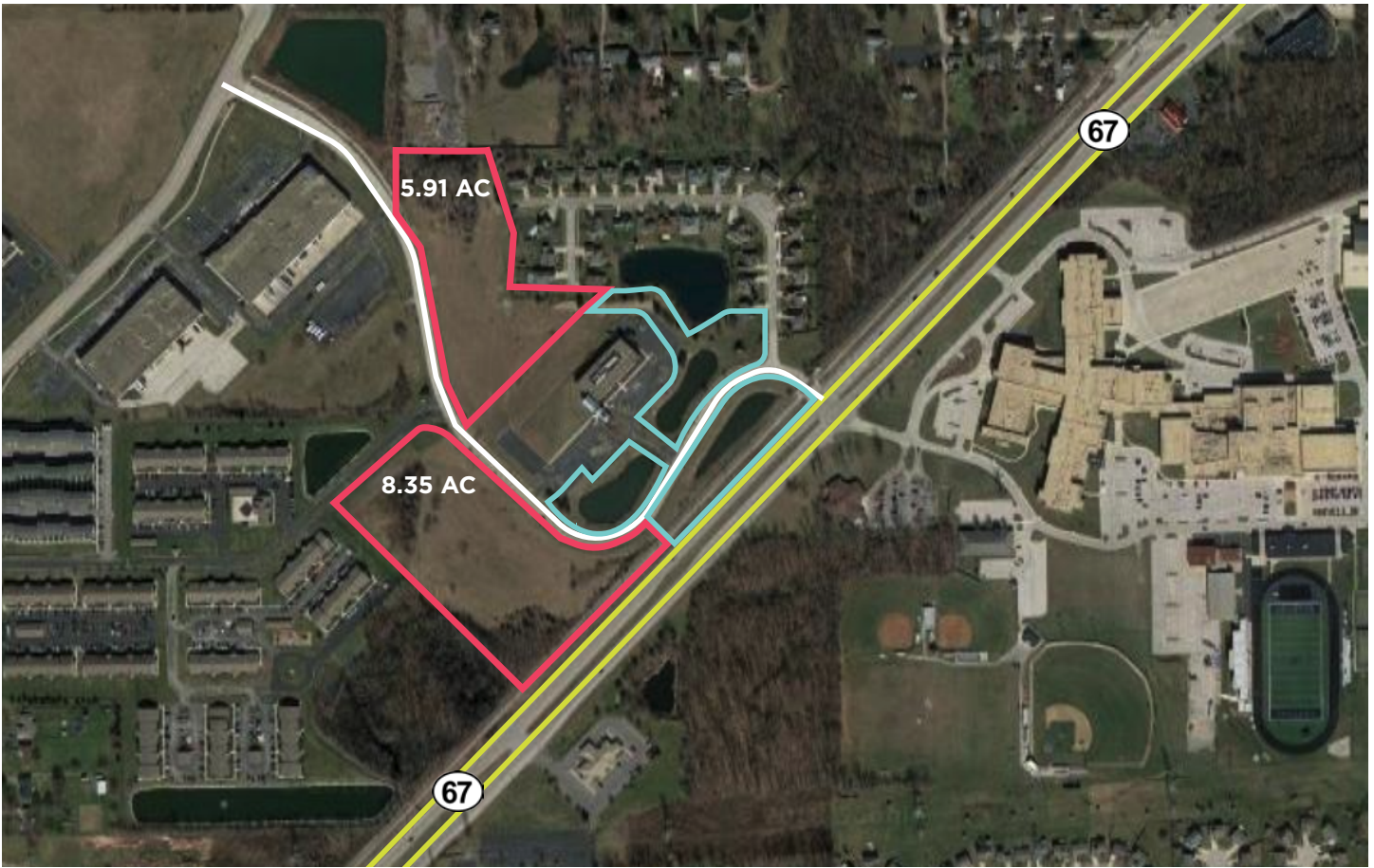
☎ 317.663.6552

☎ 317.414.1101

ross.reller@rcre.com



#growIndiana



DEMOGRAPHICS*

	1 MILE	3 MILES	5 MILES	10 MILES
Population	3,693	26,134	78,799	516,183
Households	1,356	9,526	29,013	205,310
Average HH Income	\$69,435	\$63,941	\$66,598	\$69,087
Median Age	32.4	32.6	32.9	35.2

*SitesUSA 2018 Estimated

ROSS RELLER
 Senior Vice President
 ☎ 317.663.6552
 📠 317.414.1101
 ross.reller@rcrc.com



in 🐦 f 📷 📺 #growIndiana

The information contained herein was obtained from sources we consider reliable. We cannot be responsible for errors, omissions, prior sale or lease, withdrawal from the market or change in price. Seller and broker make no representation as to the environmental condition of the property and recommend the lessee's/purchaser's independent investigation. Ver. 19.01.15-1020

9339 Priority Way West Drive
 Suite 120
 Indianapolis, IN 46240
 317.663.6000