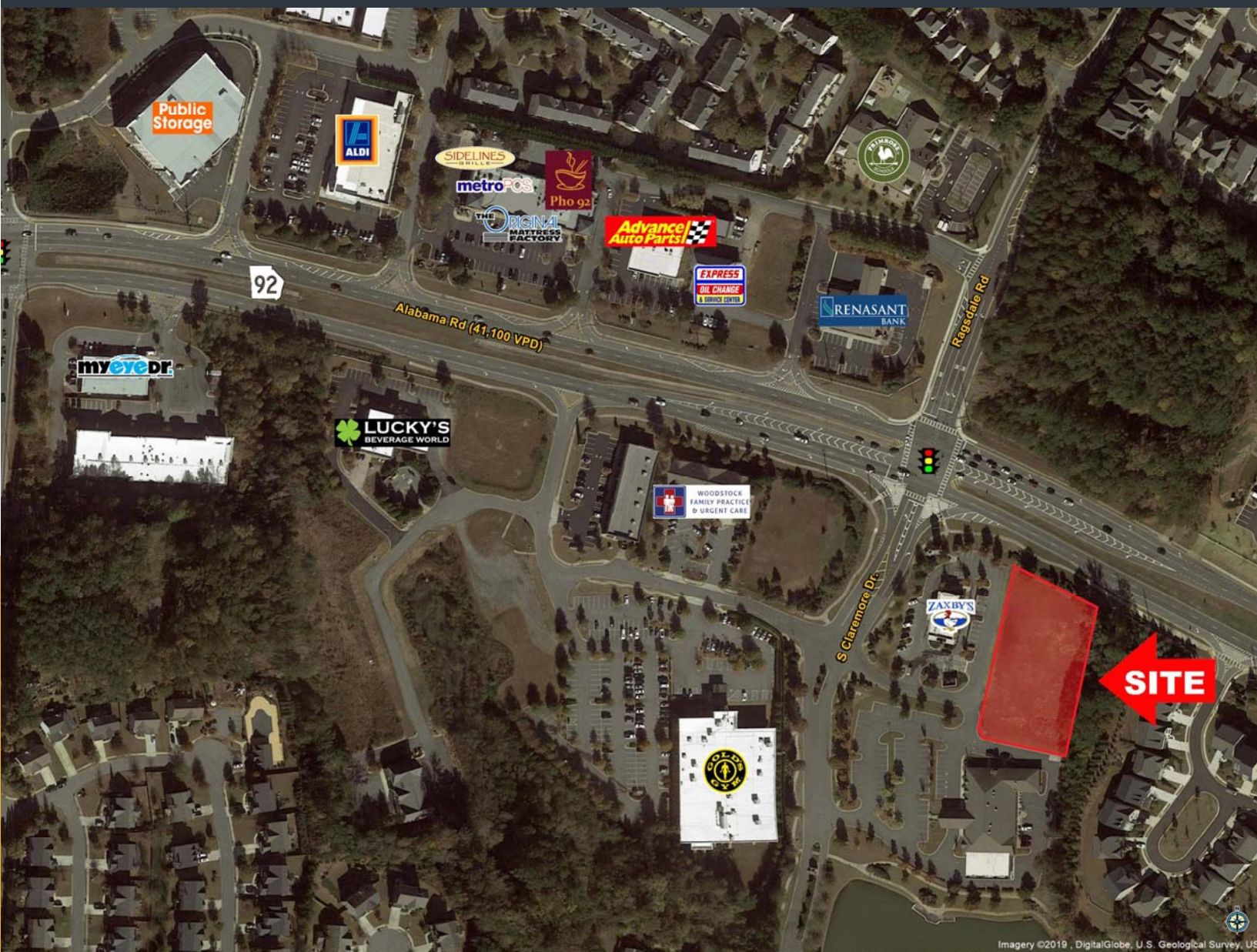


# LAND AVAILABLE 501 CLAREMORE DRIVE WOODSTOCK, GA



- Pad site available featuring a signalized entrance and 175' frontage on Hwy 92 (41,000 VPD)
- The Property is zoned GC, General Commercial with all public utilities available.
- The site is located in a highly dense residential area.
- This site offers both excellent visibility and access to eastbound and westbound traffic on Highway 92
- Approximately 57,742 population and \$120,173 Average HH Income within a 3 mile radius

DEMOGRAPHICS:	1-Mile	3-Miles	5-Miles
2018 Est. Population	7,914	57,742	143,847
2018 Est. # Households	3,239	21,802	53,186
2018 Avg HH Income	\$ 119,114	\$ 120,173	\$ 127,565
2018 Est. # of Employees	2,531	9,079	38,544

## 1.299 AC Available FOR SALE

For More Information, Contact:

Taylor Dozier  
770-801-6505  
tdozier@trilogygroup.net



www.trilogygroup.net

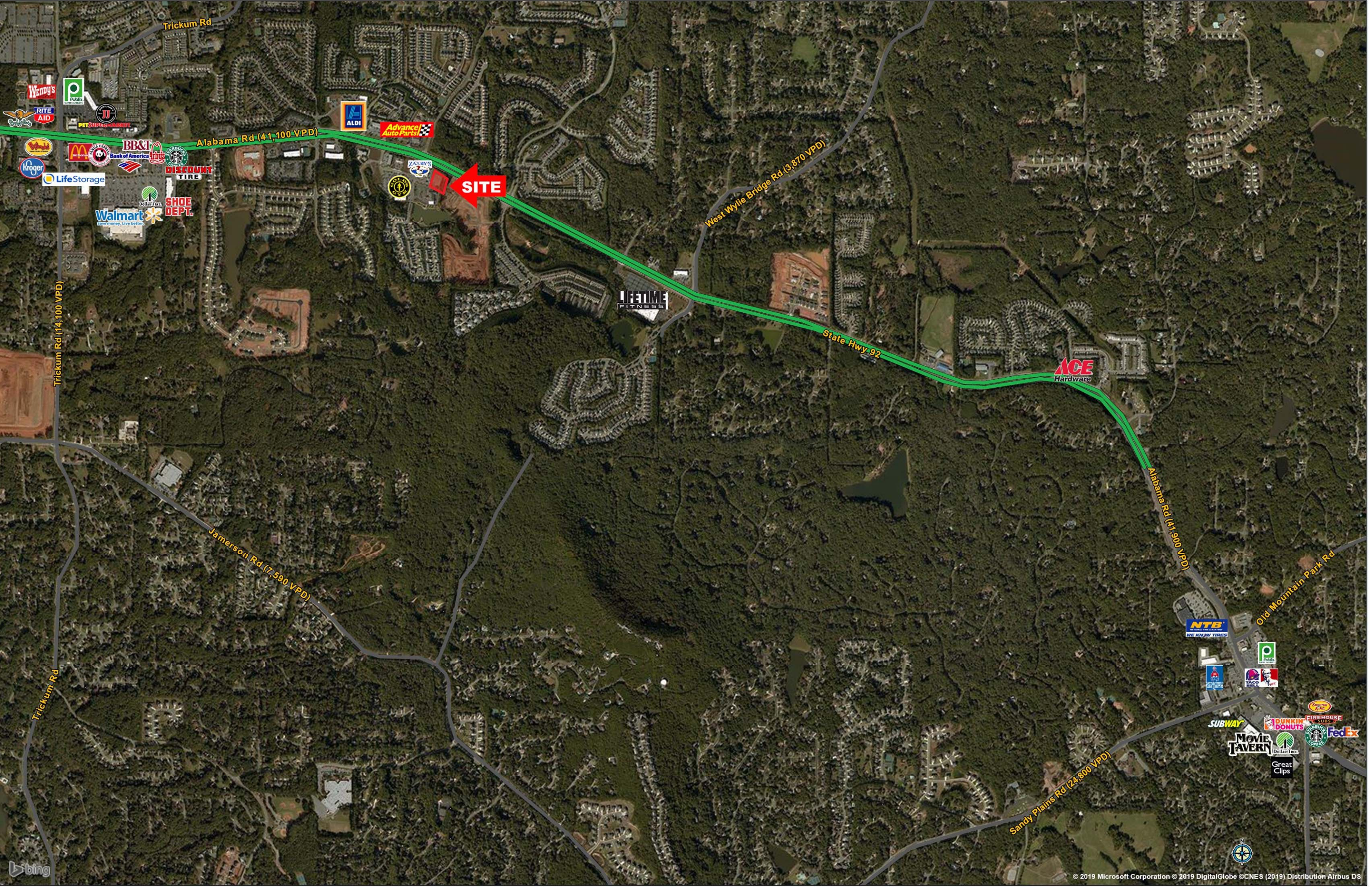
For More Information, Contact:

Taylor Dozier  
770-801-6505  
tdozier@trilogygroup.net



The information contained herein has been received from sources deemed reliable; however, no warranty, express or implied, is made regarding the accuracy of the information. No liability is assumed by The Trilogy Group, LLC or its agents for any errors or omissions.





Trickum Rd

Alabama Rd (41,100 VPD)

West Wylie Bridge Rd (3,870 VPD)

State Hwy 92

Alabama Rd (41,900 VPD)

Jamerson Rd (7,590 VPD)

Trickum Rd

Sandy Plains Rd (24,800 VPD)

Old Mountain Park Rd

SITE

ACE Hardware

LIFETIME FITNESS

NTB

SUBWAY

MOVIE TAVERN

DUNKIN' DONUTS

FIREHOUSE SUBS

FedEx

Great Clips

Dollar Tree

Starbucks

Wendy's

YAKO

PUB

WE KNOW TIRES

WALGREENS

CVS

CVS

CVS

CVS

CVS

CVS

CVS

CVS

