

OFFICE/RETAIL/FLEX SPACE | QUEEN ANNE

515 Aloha Street Seattle, WA 98109

YATES
WOOD

BROKERAGE
& PROPERTY
MANAGEMENT

FOR LEASE



PROPERTY HIGHLIGHTS

- ✓ Building is 8,300 SF
- ✓ Incredibly cool build out with high exposed ceiling, open area, offices and loft space
- ✓ Building has large kitchen area, and two bathrooms with a shower. Current build-out is for Media and Video / Filming Production
- ✓ 3 roll-up doors
- ✓ New HVAC system
- ✓ Zoned LR3-RC Low Rise
- ✓ Located in lower Queen Anne
- ✓ Building could be available to purchase
- ✓ \$24.00 SF/YR + NNN



PETER ARGERES
Commercial Broker
📞 206.612.7877
✉️ petera@yateswood.com



MICHAEL MCKINSTRY
Real Property Associates
📞 206.999.7901
✉️ mckco@msn.com

PICTURES |

515 Aloha Street Seattle, WA 98109

YATES
WOOD

BROKERAGE
& PROPERTY
MANAGEMENT

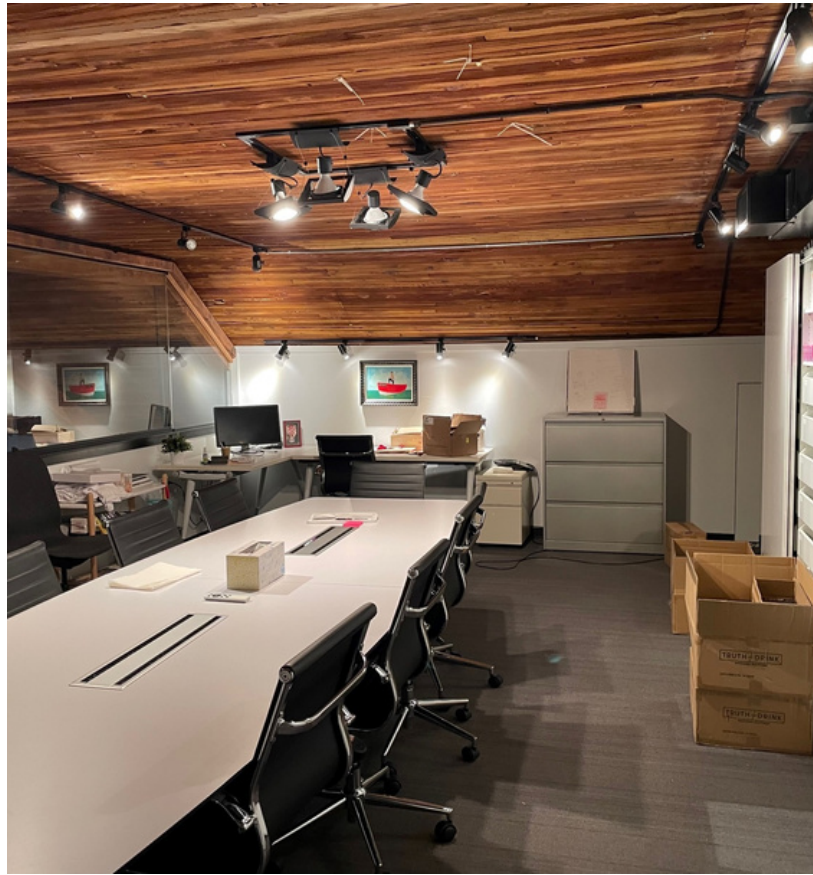


PICTURES |

515 Aloha Street Seattle, WA 98109

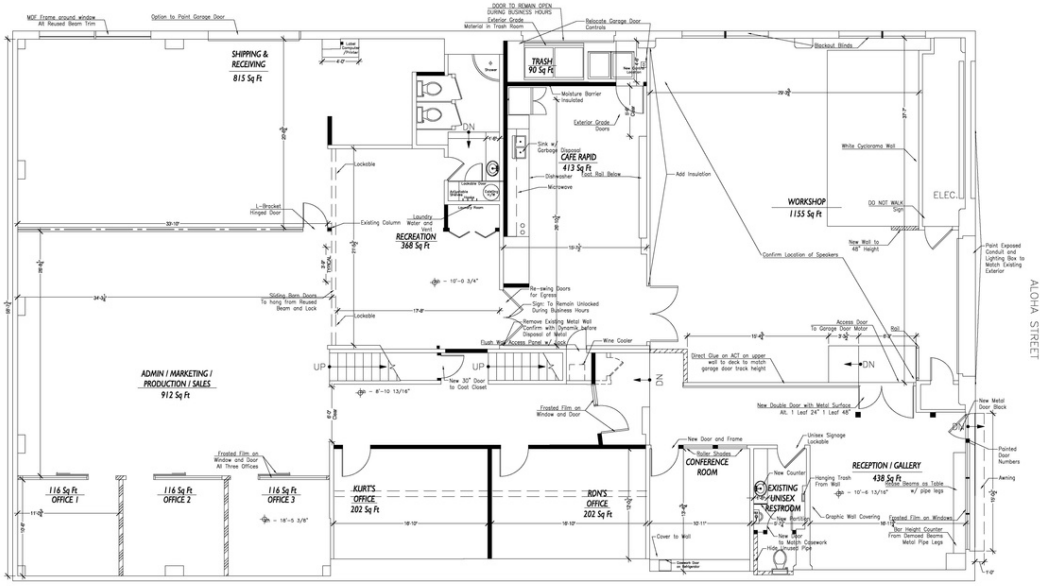
YATES
WOOD

BROKERAGE
& PROPERTY
MANAGEMENT



FLOOR PLAN |

515 Aloha Street Seattle, WA 98109



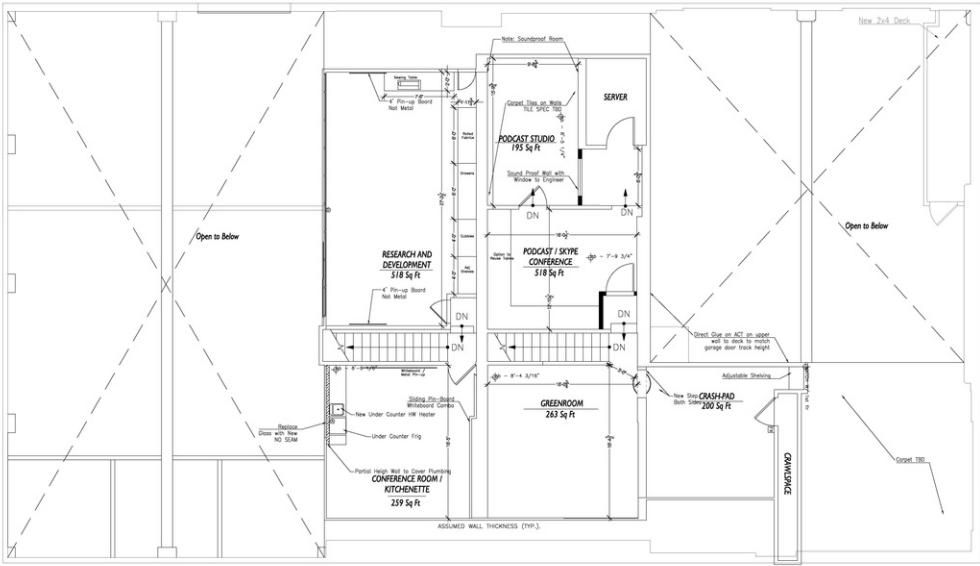
GROUND FLOOR

GENERAL NOTES:

1. RETAIN AS EXISTING UNLESS NOTED
2. REMOVING FINISH IN OCCUPIED AREAS PRIOR TO MOVE-IN
3. ALL WALL OPENING HEADERS AT 2" U.S.S.
4. PAINT ALL EXISTING ACT FLEES - WATER BASED PAINT
5. NO CEILING DEMO
6. SANITIZING ALL WOOD CEILING BECK (Gypsum & Downspout)
7. PAINT ONLY IN AREAS NOTED
8. SANITIZING AND PAINTING TO BE COMPLETED PRIOR TO FINISH WORK
9. ALL FLOORING/TO BE REPLACED
10. AREAS HATCHED ARE TO BE OCCUPIED AT MOVE-IN
11. CARPET TO BE REMOVED UNLESS NOTED
12. CLIENT MOVE-IN DATE: MAY 24, 2012
13. ALL DIMENSIONS W/

WALL SCHEDULE

NO.	DESCRIPTION	THICKNESS	FINISH
1	1/2" U.S.S. (1/2" U.S.S.)	1/2"	1/2" U.S.S.
2	1/2" U.S.S. (1/2" U.S.S.)	1/2"	1/2" U.S.S.
3	1/2" U.S.S. (1/2" U.S.S.)	1/2"	1/2" U.S.S.
4	1/2" U.S.S. (1/2" U.S.S.)	1/2"	1/2" U.S.S.
5	1/2" U.S.S. (1/2" U.S.S.)	1/2"	1/2" U.S.S.
6	1/2" U.S.S. (1/2" U.S.S.)	1/2"	1/2" U.S.S.
7	1/2" U.S.S. (1/2" U.S.S.)	1/2"	1/2" U.S.S.
8	1/2" U.S.S. (1/2" U.S.S.)	1/2"	1/2" U.S.S.
9	1/2" U.S.S. (1/2" U.S.S.)	1/2"	1/2" U.S.S.
10	1/2" U.S.S. (1/2" U.S.S.)	1/2"	1/2" U.S.S.
11	1/2" U.S.S. (1/2" U.S.S.)	1/2"	1/2" U.S.S.
12	1/2" U.S.S. (1/2" U.S.S.)	1/2"	1/2" U.S.S.
13	1/2" U.S.S. (1/2" U.S.S.)	1/2"	1/2" U.S.S.



SECOND FLOOR

GENERAL NOTES:

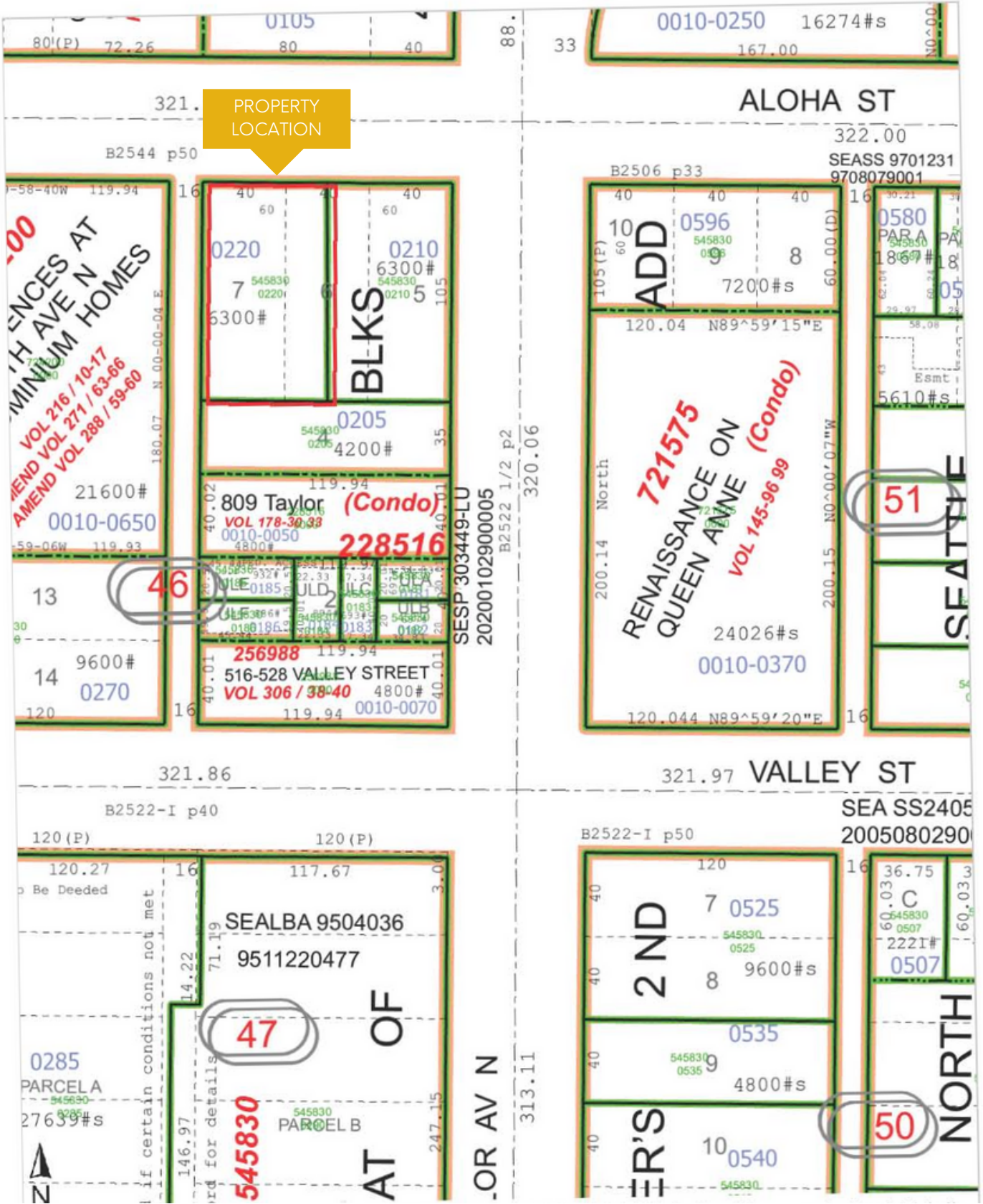
1. RETAIN AS EXISTING UNLESS NOTED
2. REMOVING FINISH IN OCCUPIED AREAS PRIOR TO MOVE-IN
3. ALL WALL OPENING HEADERS AT 2" U.S.S.
4. PAINT ALL EXISTING ACT FLEES - WATER BASED PAINT
5. NO CEILING DEMO
6. SANITIZING ALL WOOD CEILING BECK (Gypsum & Downspout)
7. PAINT ONLY IN AREAS NOTED
8. SANITIZING AND PAINTING TO BE COMPLETED PRIOR TO FINISH WORK
9. ALL FLOORING/TO BE REPLACED
10. AREAS HATCHED ARE TO BE OCCUPIED AT MOVE-IN
11. CARPET TO BE REMOVED UNLESS NOTED
12. CLIENT MOVE-IN DATE: MAY 24, 2012
13. ALL DIMENSIONS W/

WALL SCHEDULE

NO.	DESCRIPTION	THICKNESS	FINISH
1	1/2" U.S.S. (1/2" U.S.S.)	1/2"	1/2" U.S.S.
2	1/2" U.S.S. (1/2" U.S.S.)	1/2"	1/2" U.S.S.
3	1/2" U.S.S. (1/2" U.S.S.)	1/2"	1/2" U.S.S.
4	1/2" U.S.S. (1/2" U.S.S.)	1/2"	1/2" U.S.S.
5	1/2" U.S.S. (1/2" U.S.S.)	1/2"	1/2" U.S.S.
6	1/2" U.S.S. (1/2" U.S.S.)	1/2"	1/2" U.S.S.
7	1/2" U.S.S. (1/2" U.S.S.)	1/2"	1/2" U.S.S.
8	1/2" U.S.S. (1/2" U.S.S.)	1/2"	1/2" U.S.S.
9	1/2" U.S.S. (1/2" U.S.S.)	1/2"	1/2" U.S.S.
10	1/2" U.S.S. (1/2" U.S.S.)	1/2"	1/2" U.S.S.
11	1/2" U.S.S. (1/2" U.S.S.)	1/2"	1/2" U.S.S.
12	1/2" U.S.S. (1/2" U.S.S.)	1/2"	1/2" U.S.S.
13	1/2" U.S.S. (1/2" U.S.S.)	1/2"	1/2" U.S.S.

SITE MAP |

515 Aloha Street Seattle, WA 98109



AERIAL MAP |

515 Aloha Street Seattle, WA 98109

**YATES
WOOD**

BROKERAGE
& PROPERTY
MANAGEMENT

