

2319 WISCONSIN AVENUE, NW ■ WASHINGTON, DC



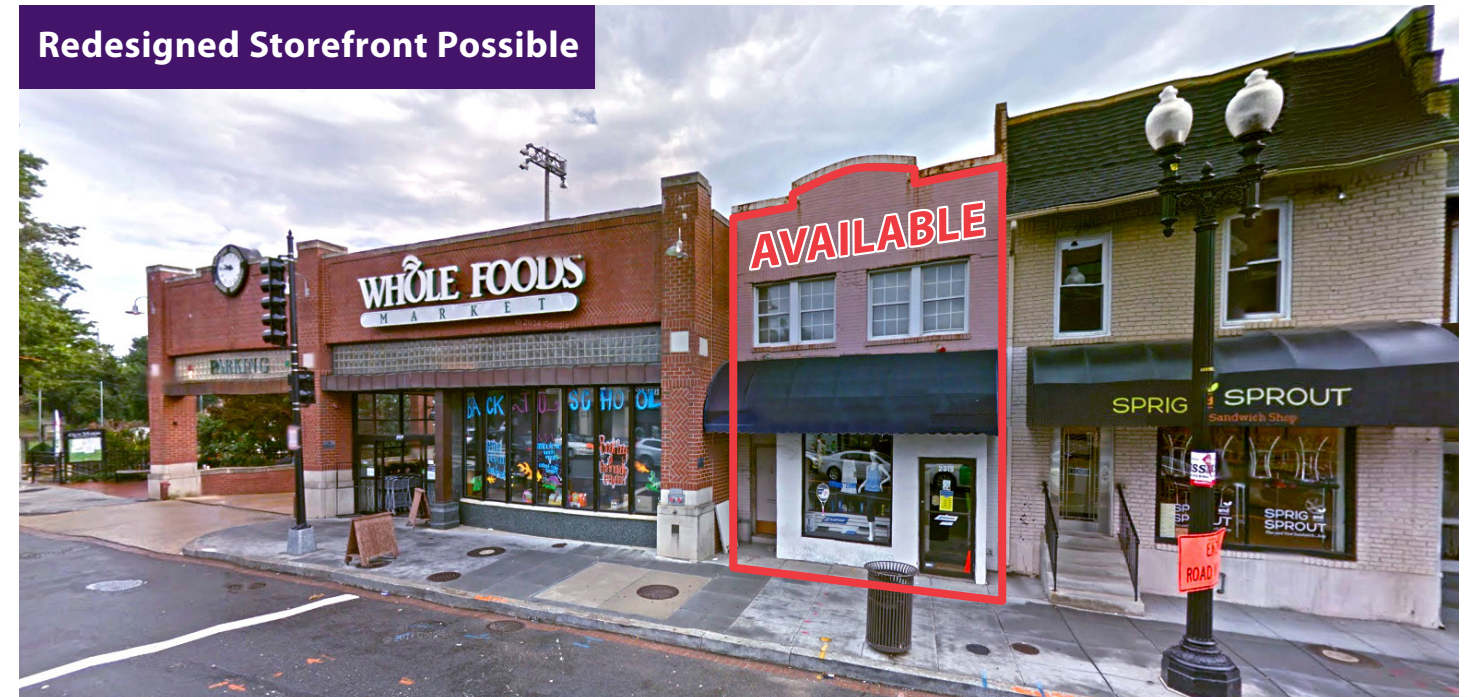
Information herein has been obtained from sources believed to be reliable. While we do not doubt its accuracy, we have not verified it and make no guarantee, warranty or representation about it. Independent confirmation of its accuracy and completeness is your responsibility. H&R Retail, Inc.

2319 Wisconsin Avenue, NW

GLOVER PARK/UPPER GEORGETOWN | WASHINGTON, DC 20007

Restaurant/Retail Space for Lease
Up to 4,200 SF + Basement + Outdoor Area

Redesigned Storefront Possible



Property Highlights

- Restaurant/Retail space for lease immediately adjacent to Whole Foods Market
- Located in affluent Glover Park/Upper Georgetown area.
- Existing 1,800 square feet + basement + garage
- Up to 4,200 square feet + basement (Can be subdivided)
- Rooftop deck is an option.
- Public parking available around the corner.
- Join Whole Foods Market, Sprig & Sprout, Ace Hardware, CVS Pharmacy, Washington Sports Club, U.S. Post Office, Starbucks, Chipotle, Jimmy John's, Einstein Bros. Bagels and Bruegger's Bagels
- Walking distance from several Embassies, Office buildings, U.S. Naval Observatory and the Vice Presidential Residence.

Demographics (2015 Estimated)

| | 0.5 Mile | 1 Mile | 2 Mile |
|---------------------|-----------|-----------|-----------|
| Population | 9,614 | 35,107 | 157,395 |
| Average HH Income | \$143,166 | \$157,299 | \$146,619 |
| Number of Employees | 8,295 | 30,982 | 140,434 |

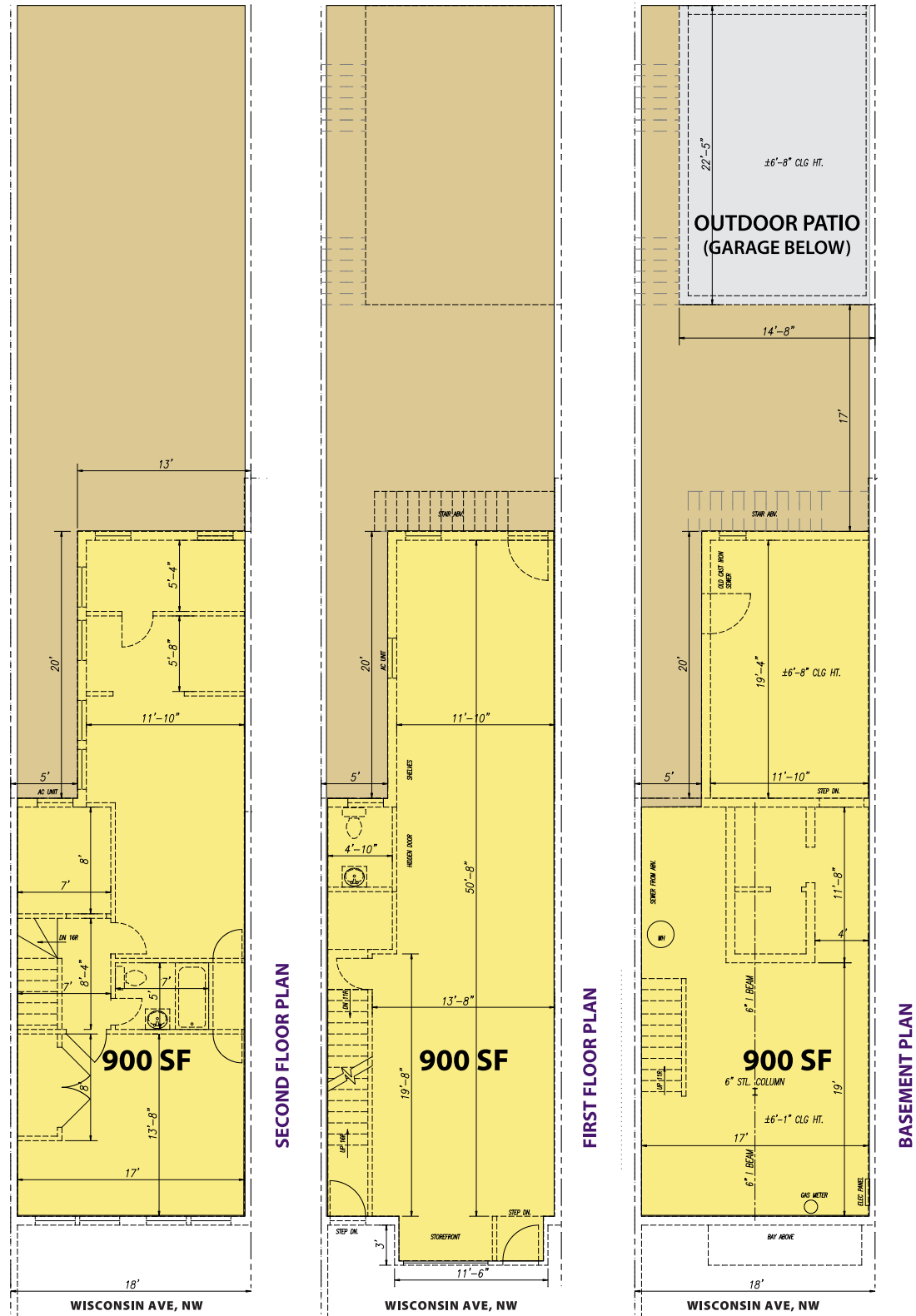
Please Contact

Lawrence B. Hoffman
 240.482.3610 (direct)
 301.656.3030 (office)
 lhoffman@hrretail.com



2319 WISCONSIN AVENUE, NW ■ WASHINGTON, DC

■ EXISTING BUILDING LAYOUT



■ POTENTIAL BUILDING LAYOUT

