

Single Tenant Office Building For Lease

514 2nd Ave. W.
Seattle WA 98119

Please Contact:
Gloria Touch
206.971.0625
gloria@cannoncommercial.com

Joe Cannon
206.436.2343
joe@cannoncommercial.com

**cannon
commercial**



Space Info

Size:

- Approximately 5,680 square feet

Rent:

- \$29/SF/YR Full Service

Availability:

- August 1st, 2017

Lease Term:

- 3-5 years

Space Features:

- 11 private offices
- 2 conference rooms
- Reception area
- Spacious open work areas
- 2 Storage rooms
- 4 restrooms (2 on each floor)
- 2 kitchenettes (1 on each floor)

Building Info

Building Features:

- Built in 1960
- 2 story building
- Construction Class: Masonry
- Remodel and seismic updates in 2000 & 2007

Location:

- Lower Queen Anne

Parking:

- Onsite parking lot with 14 stalls

Amenities:

- Within walking distance to restaurants and cafes
- Other amenities include Safeway, Bank of America, Chase, FedEx, USPS, Bartell Drugs, Ofit Gym and much more!

95

Walk Score
Walker's Paradise

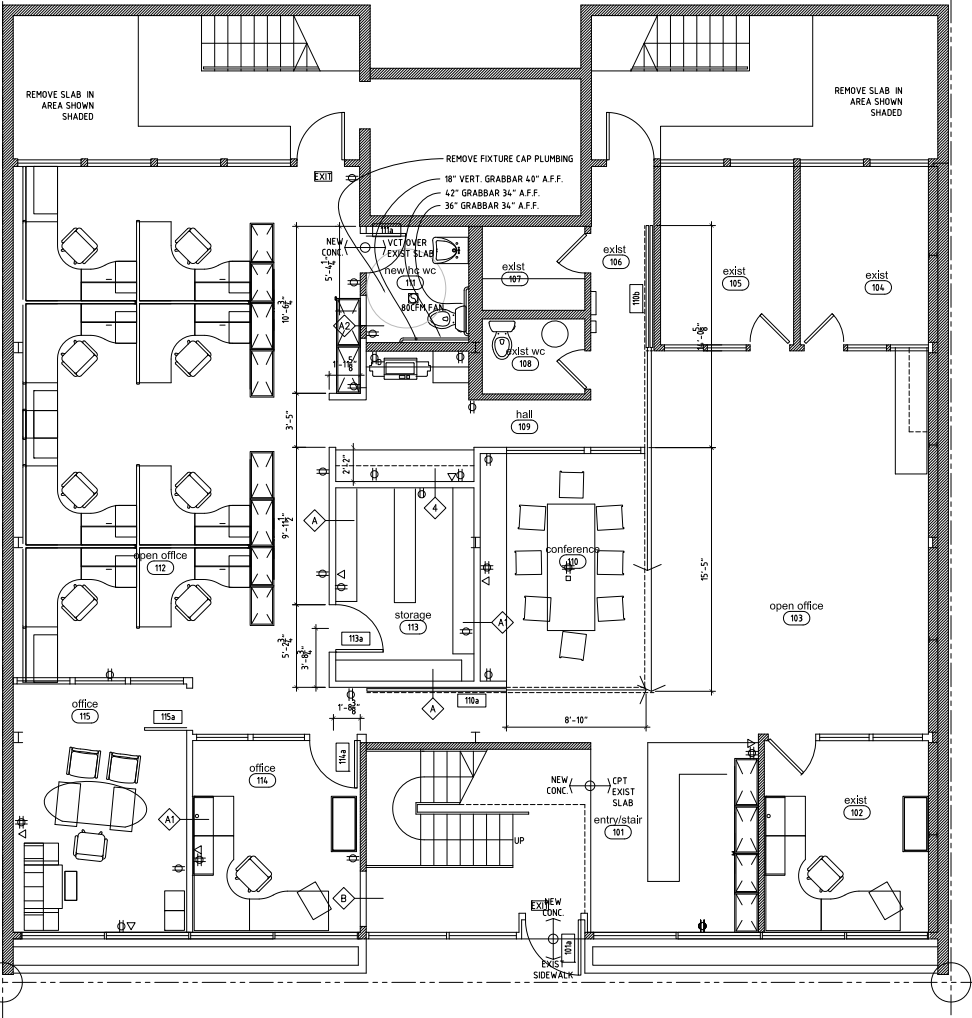
72

Transit Score
Excellent Transit

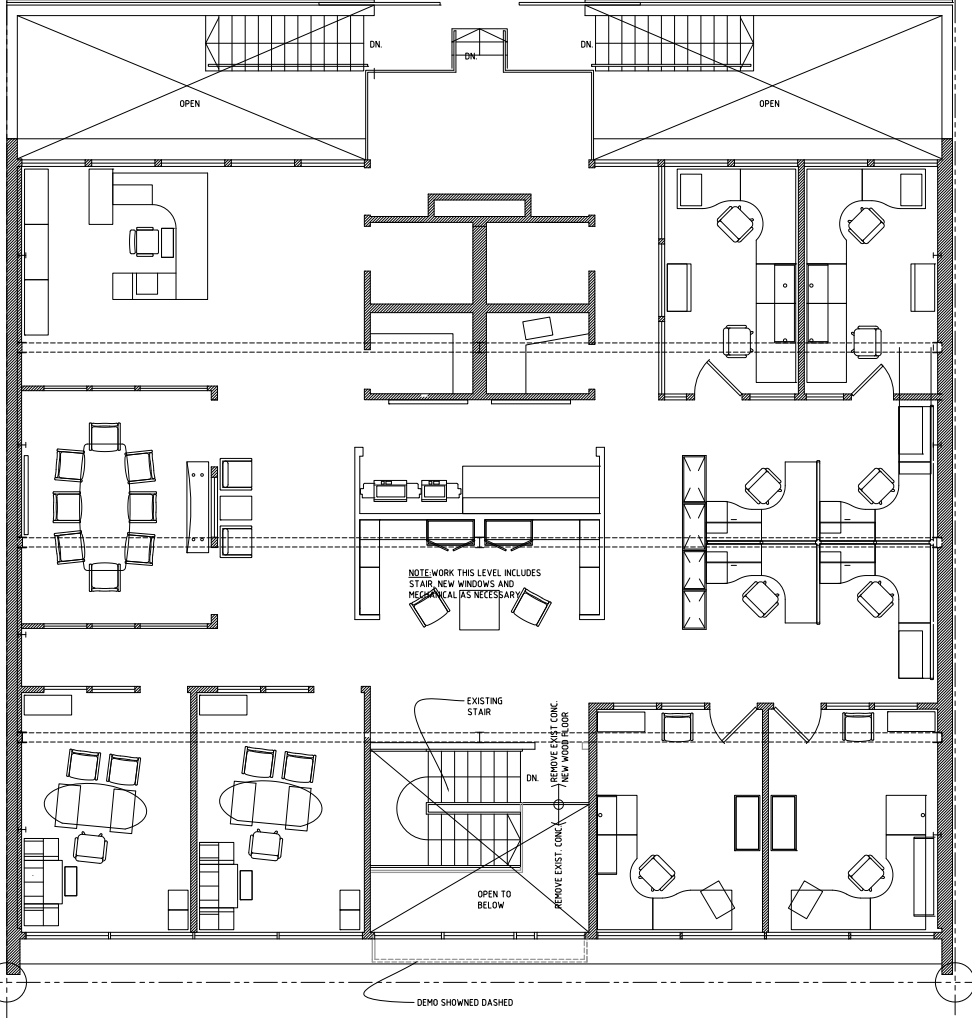
66

Bike Score
Bikeable

Floor Plans



1 lower floor
1/8"=1'-0"



2 upper floor
1/8"=1'-0"

Photos

First floor: Reception area



First floor: Open work area



Second floor: Library & open work area



First floor: Open work area & conference room with sliding wall



Second floor: Conference room



Outdoor area



First Floor: Office



Second floor: Main reception area



Parking lot





For more information, contact:
Gloria Touch
206.971.0625
gloria@cannoncommercial.com

Joe Cannon
206.436.2343
joe@cannoncommercial.com

