

For Sale

\$785,000

1,650 SF



5310 SE Mile Hill Dr

Port Orchard, Washington 98366

Property Features

- Approved to be Mobil station with permit
- All utilities available
- City of Port Orchard
- Over 25,000 cars per day
- Lot size: 46,000 SF
- Building: 1,650 SF
- Sale price: \$785,000



For more information:

Itzik Mizrahi

+1 425 586 5637 • imizrahi@nai-psp.com

NO WARRANTY OR REPRESENTATION, EXPRESS OR IMPLIED, IS MADE AS TO THE ACCURACY OF THE INFORMATION CONTAINED HEREIN, AND THE SAME IS SUBMITTED SUBJECT TO ERRORS, OMISSIONS, CHANGE OF PRICE, RENTAL OR OTHER CONDITIONS, PRIOR SALE, LEASE OR FINANCING, OR WITHDRAWAL WITHOUT NOTICE, AND OF ANY SPECIAL LISTING CONDITIONS IMPOSED BY OUR PRINCIPALS NO WARRANTIES OR REPRESENTATIONS ARE MADE AS TO THE CONDITION OF THE PROPERTY OR ANY HAZARDS CONTAINED THEREIN ARE ANY TO BE IMPLIED.

NAI Puget Sound Properties

600 108th Avenue NE

+1 425 586 5600

nai-psp.com

Retail for Sale

5310 SE Mile Hill Dr



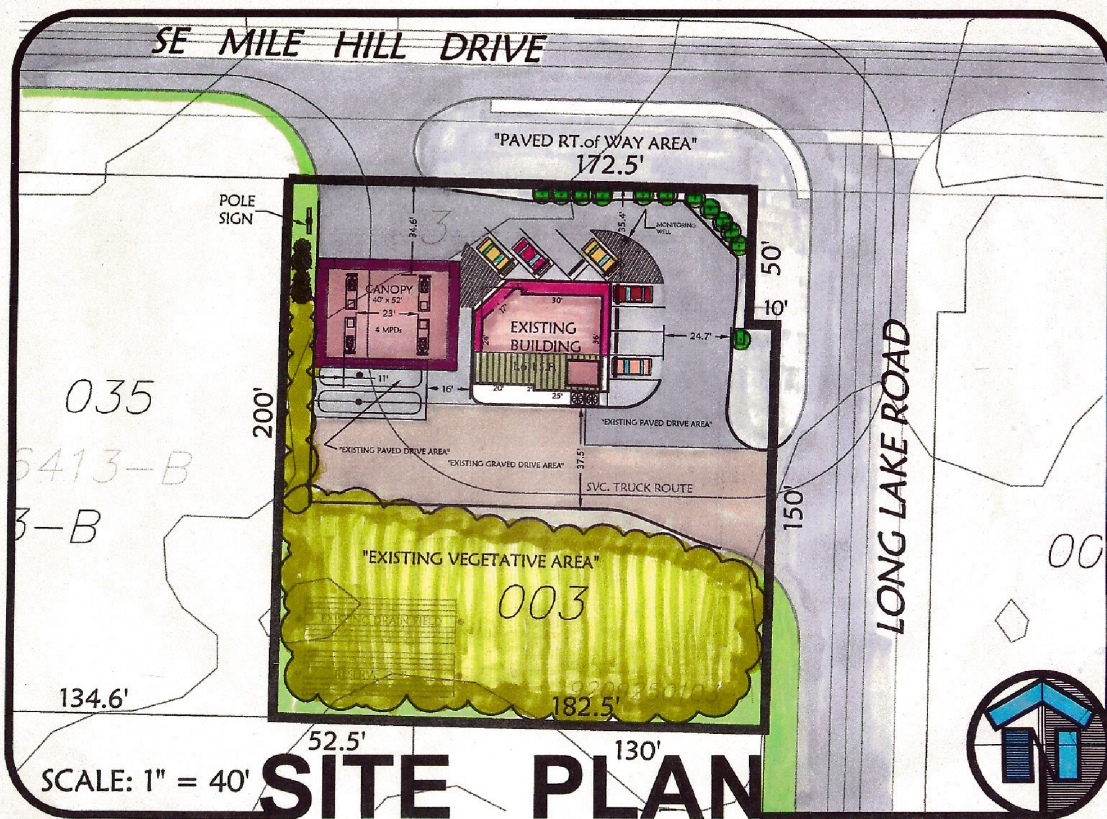
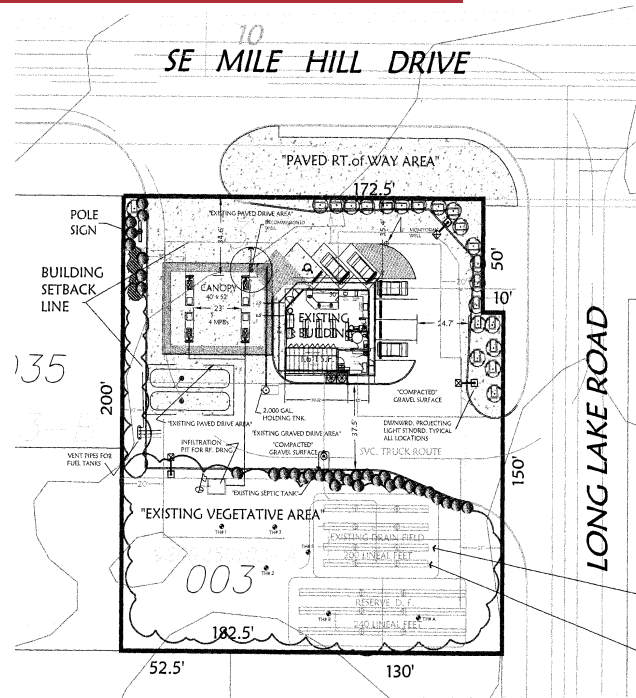
BELLEVUE | SEATTLE | TACOMA

600 108th Avenue NE, Suite 340
Bellevue, WA 98004
+1 425 586 5600
nai-pp.com

THE INFORMATION CONTAINED HEREIN HAS BEEN GIVEN TO US BY THE OWNER OF THE PROPERTY OR OTHER SOURCES WE DEEM RELIABLE, WE HAVE NO REASON TO DOUBT ITS ACCURACY, BUT WE DO NOT GUARANTEE IT. ALL INFORMATION SHOULD BE VERIFIED PRIOR TO PURCHASE OR LEASE.

Retail for Sale

5310 SE Mile Hill Dr



600 108th Avenue NE, Suite 340
Bellevue, WA 98004
+1 425 586 5600
nai-psp.com

BELLEVUE | SEATTLE | TACOMA

THE INFORMATION CONTAINED HEREIN HAS BEEN GIVEN TO US BY THE OWNER OF THE PROPERTY OR OTHER SOURCES WE DEEM RELIABLE, WE HAVE NO REASON TO DOUBT ITS ACCURACY, BUT WE DO NOT GUARANTEE IT. ALL INFORMATION SHOULD BE VERIFIED PRIOR TO PURCHASE OR LEASE.