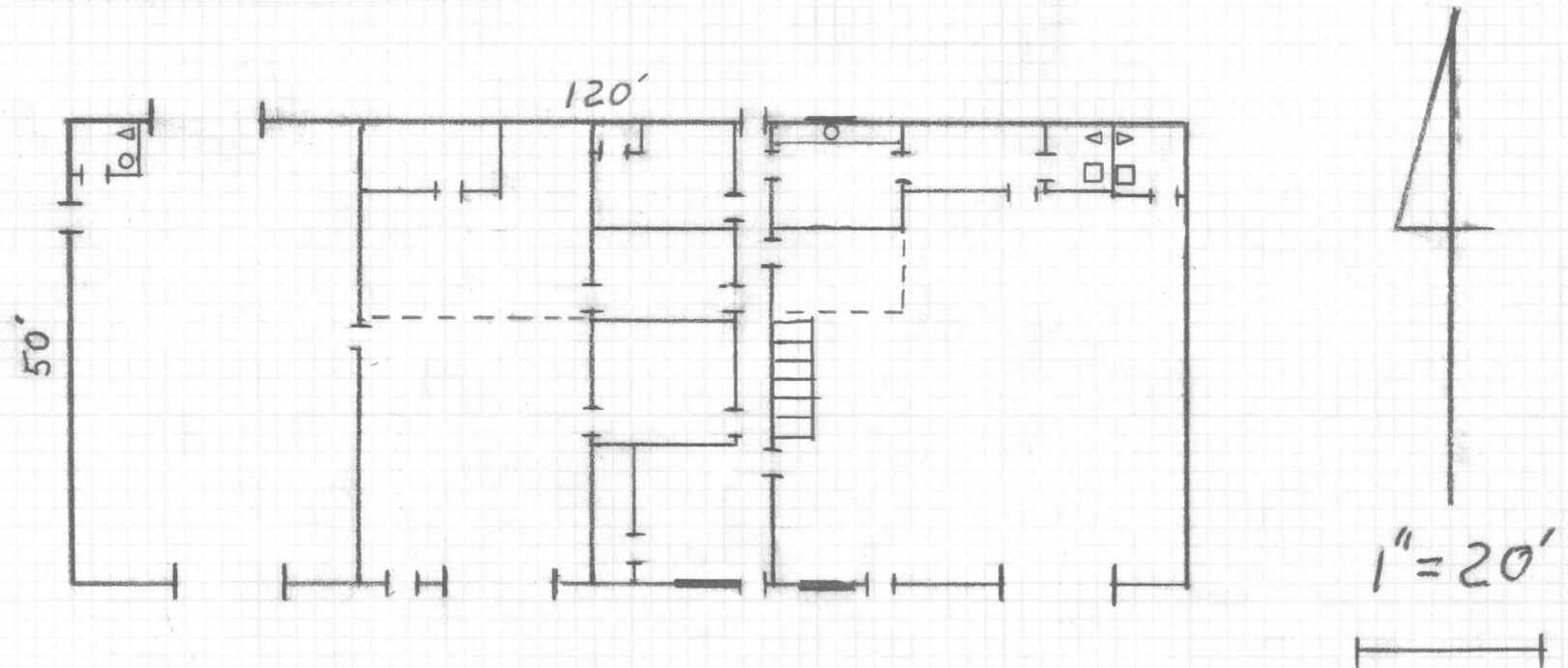


6,000 Sq.Ft. Building + 1,800 Sq.Ft. Mezzanine

1,300 Sq.Ft Offices and Storage Rooms

31,700 Sq.Ft Lot + Gated Easement Between Buildings



898 Valentine Ave. S.E., Pacific, WA. 98047

Pierce County Parcel # 4495400083