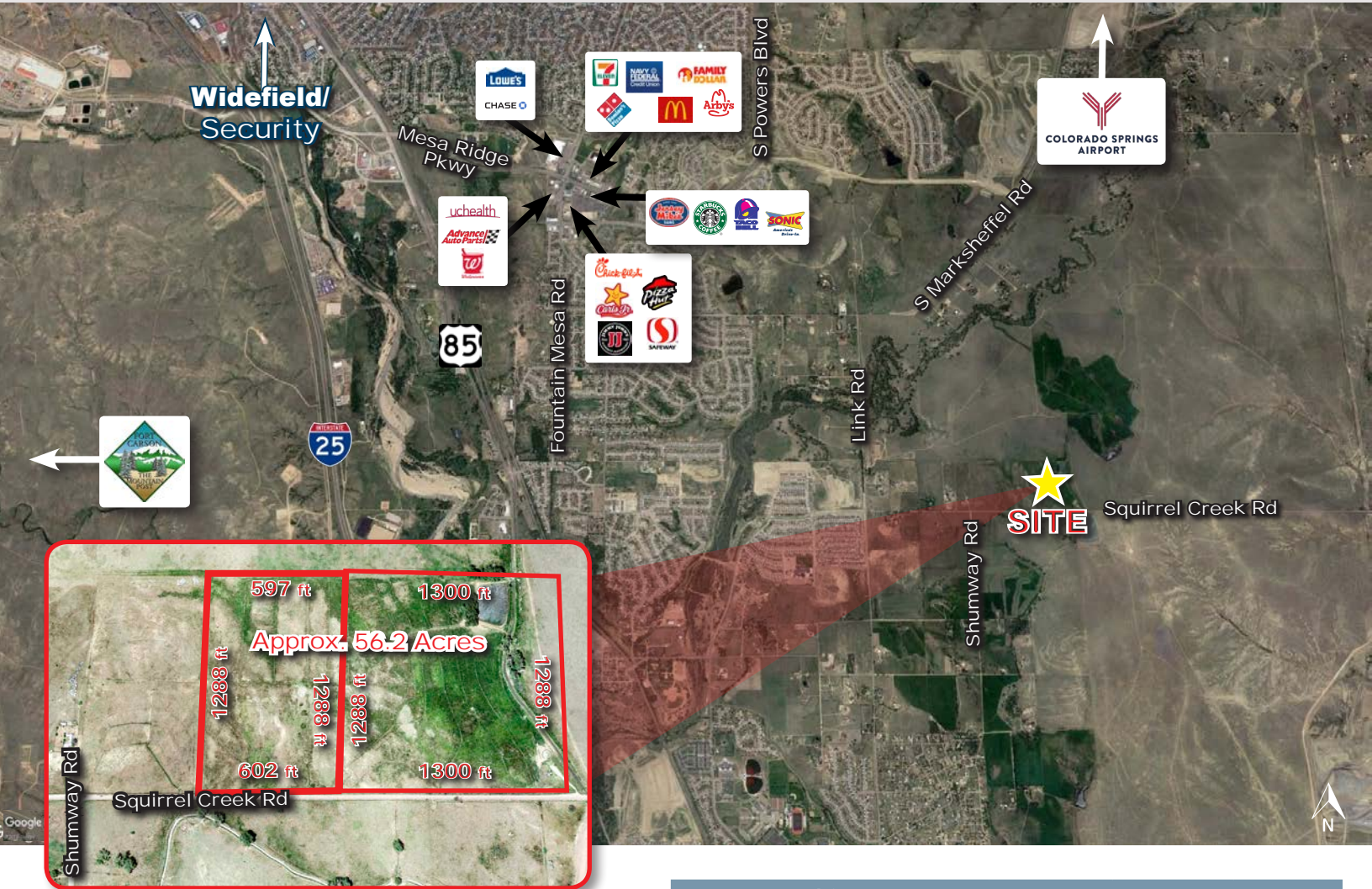


# LAND FOR SALE

## 56.2 ACRES EAST OF POWERS BOULEVARD

Squirrel Creek Road, Fountain, CO 80817



### PROPERTY INFORMATION

**Price:** \$505,800.00 - approximately \$9,000 an acre

**Size:** Approx. 56.2 Acres in the town of Fountain, south of Marksheffel Road, east of Powers Boulevard

**Zoning:** RR-5 - Residential Rural

**Tax Schedule No:** 5534000002

- 9.5 miles Schriever Air Force Base, 3.5 miles to Fort Carson
- Squirrel Creek Road newly paved
- 7.0 miles to Colorado Springs Municipal Airport
- Fountain Fort Carson School District 8
- Land served by public water supply or may drill individual well
- Fountain Water, Fountain Sanitation District, Mountain View Electric

Demographics			
	1 Mile	3 Mile	5 Mile
<b>Population</b>			
2018 Est. Population	66	32,779	53,629
<b>Households</b>			
2018 Est. HHs	25	411	18,001
2018 Est. Avg. HH Income	\$80,577	\$76,104	\$73,431
Drive Times			
	5 Min	10 Min	15 Min
2018 Est. Population	400	22,287	47,823
2018 Est. HHs	136	7,259	15,939
2018 Est. Avg. HH Income	\$78,630	\$78,055	\$73,467

Source: 2018 US Estimate, All Rights Reserved, Alteryx, Inc.

**Lisa Czelatdko, Land**  
Lisac@oliverereg.com