



PARK INDUSTRIAL VILLAGE

2000 East Center Circle, Building B | Plymouth, MN 55441

4,050 SF Industrial Space For Sublease



Highlights and Features:

- Industrial building in Park Industrial Village
- Centrally located in Plymouth
- Light industrial shared
- Dry, climate-controlled storage
- Ceiling Height: 24', racking is included
- Dock High Doors: 1
- Temporary or longer-term storage
- Zoning: I2, Medium Industrial District

Demographics and Traffic Counts:

- Average Household Population: 1 mile - 1,566, 3 miles - 27,749, and 5 miles - 98,693
- Average Household Income: 1 mile - \$88,700, 3 miles - \$95,383, and 5 miles - \$96,078
- Hwy 55 - 31,000 vpd, Hwy 61 - 6,177 vpd, and Industrial Park Blvd - 1,507 vpd

Available For Sublease:

- Suite 400: 4,050 sf (12/31/28)
- Lease Rate: \$6,000/Month Gross Rate



Christianson & Company
 COMMERCIAL REAL ESTATE SERVICES
www.SpaceAvailableMN.com



LAURA HOTVET

612.816.7537

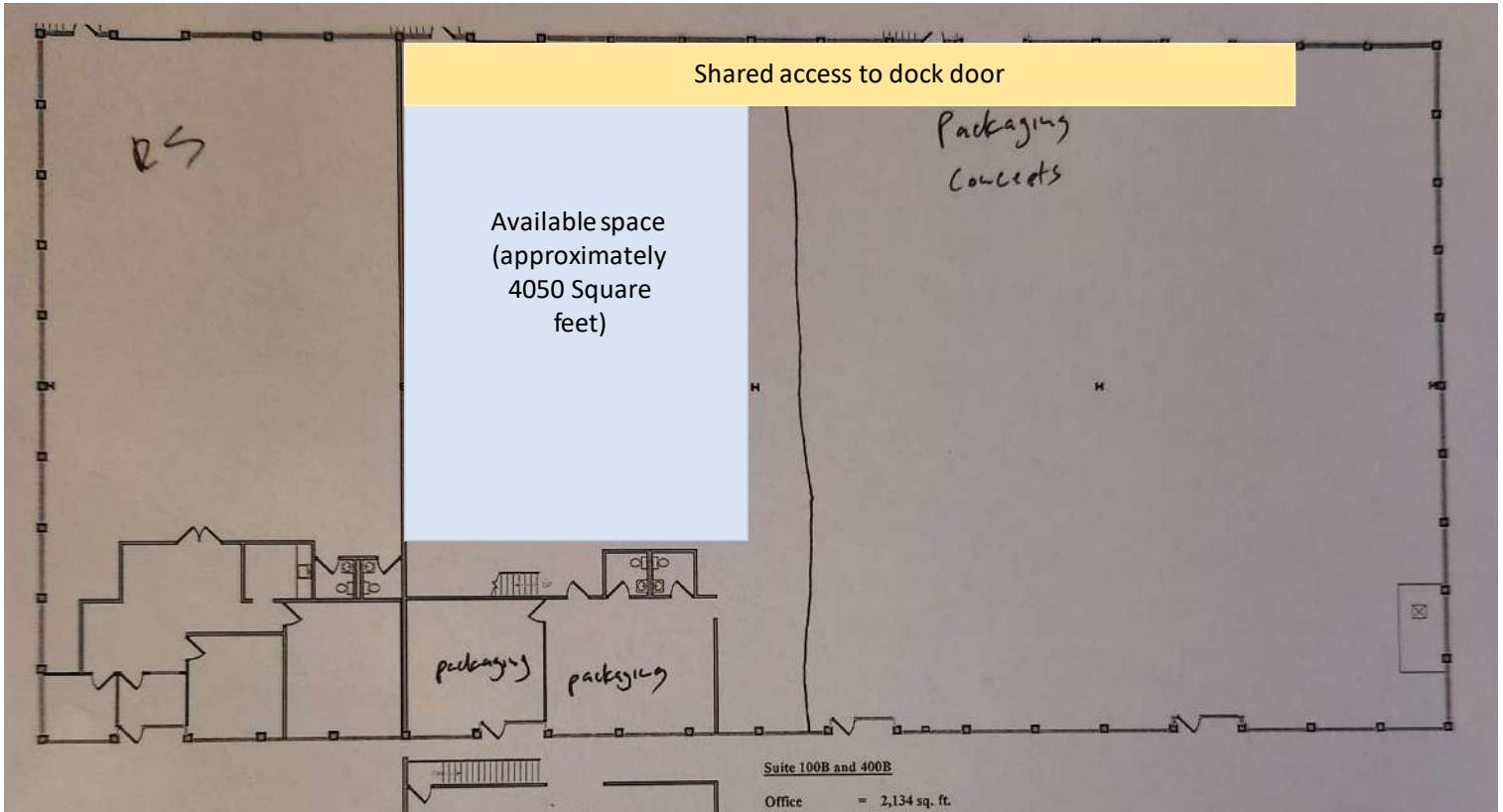
laurahotvet@christiansonandco.com

This information is accurate as of the date of printing and is subject to change without notice. All information is deemed accurate, but cannot be guaranteed.

www.SpaceAvailableMN.com

info@SpaceAvailableMN.com | 952.921.5844

Floor Plan



Loading Dock

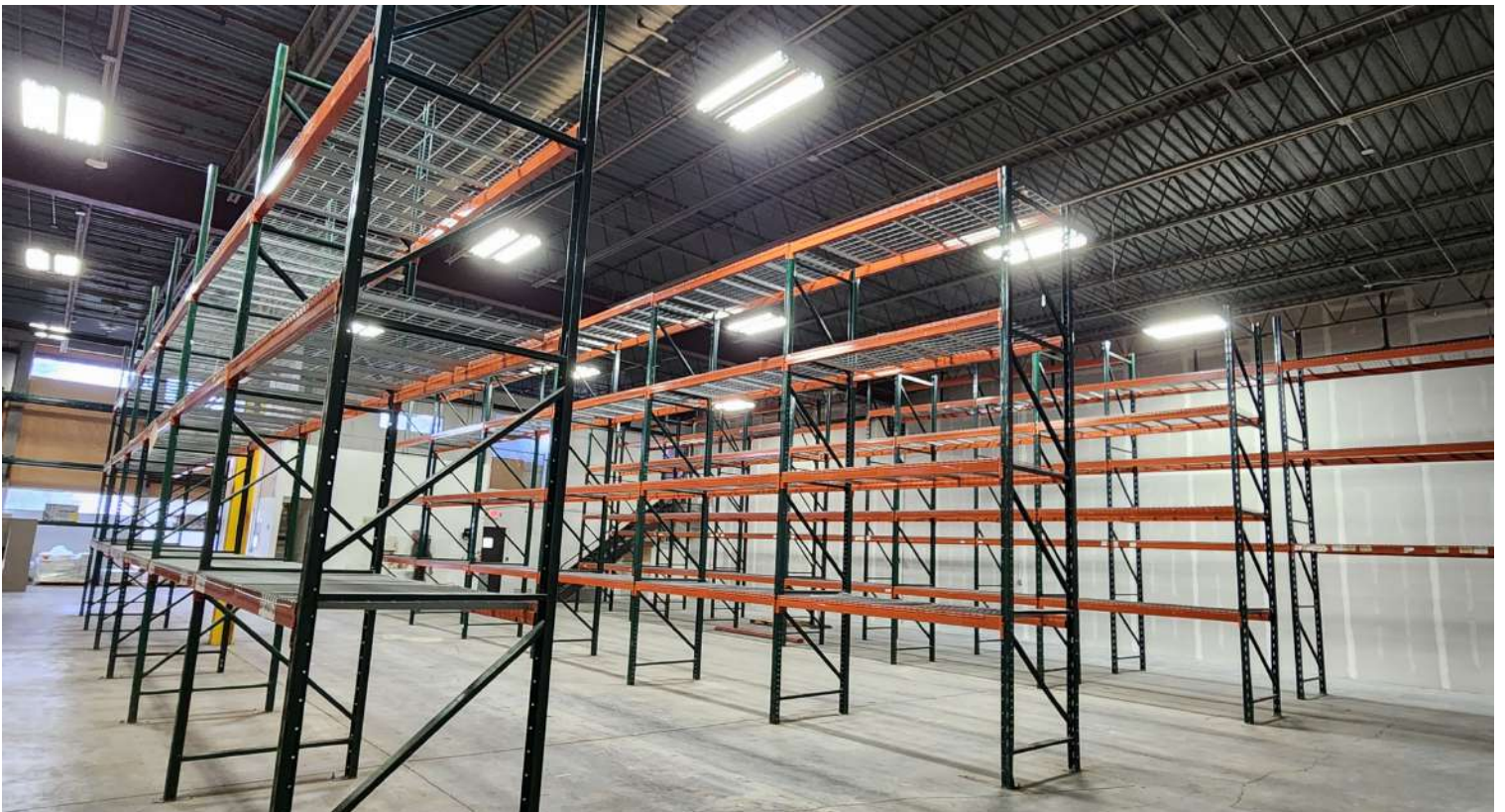


This information is accurate as of the date of printing and is subject to change without notice. All information is deemed accurate, but cannot be guaranteed.

Warehouse Photo

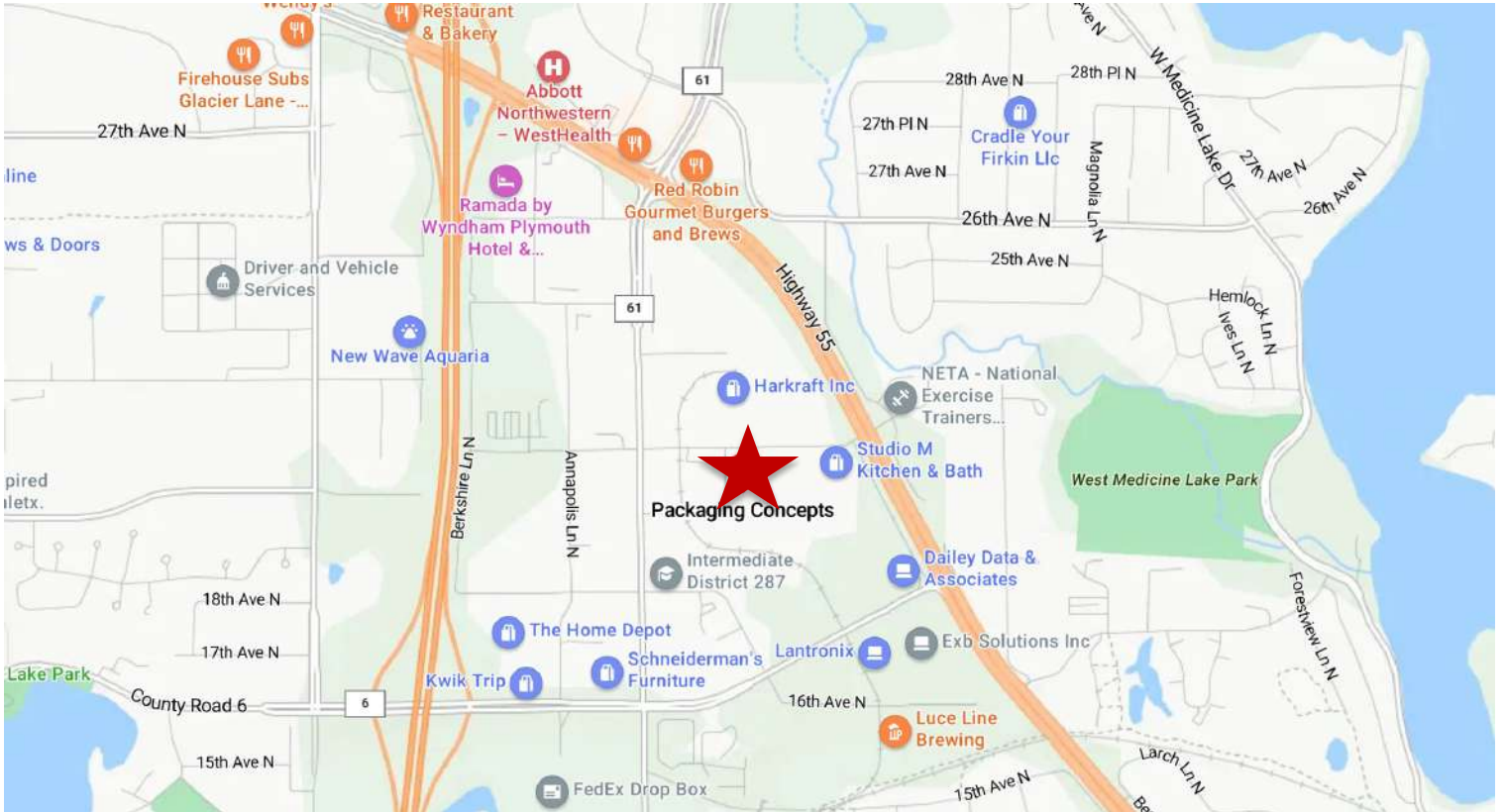


Warehouse Photo

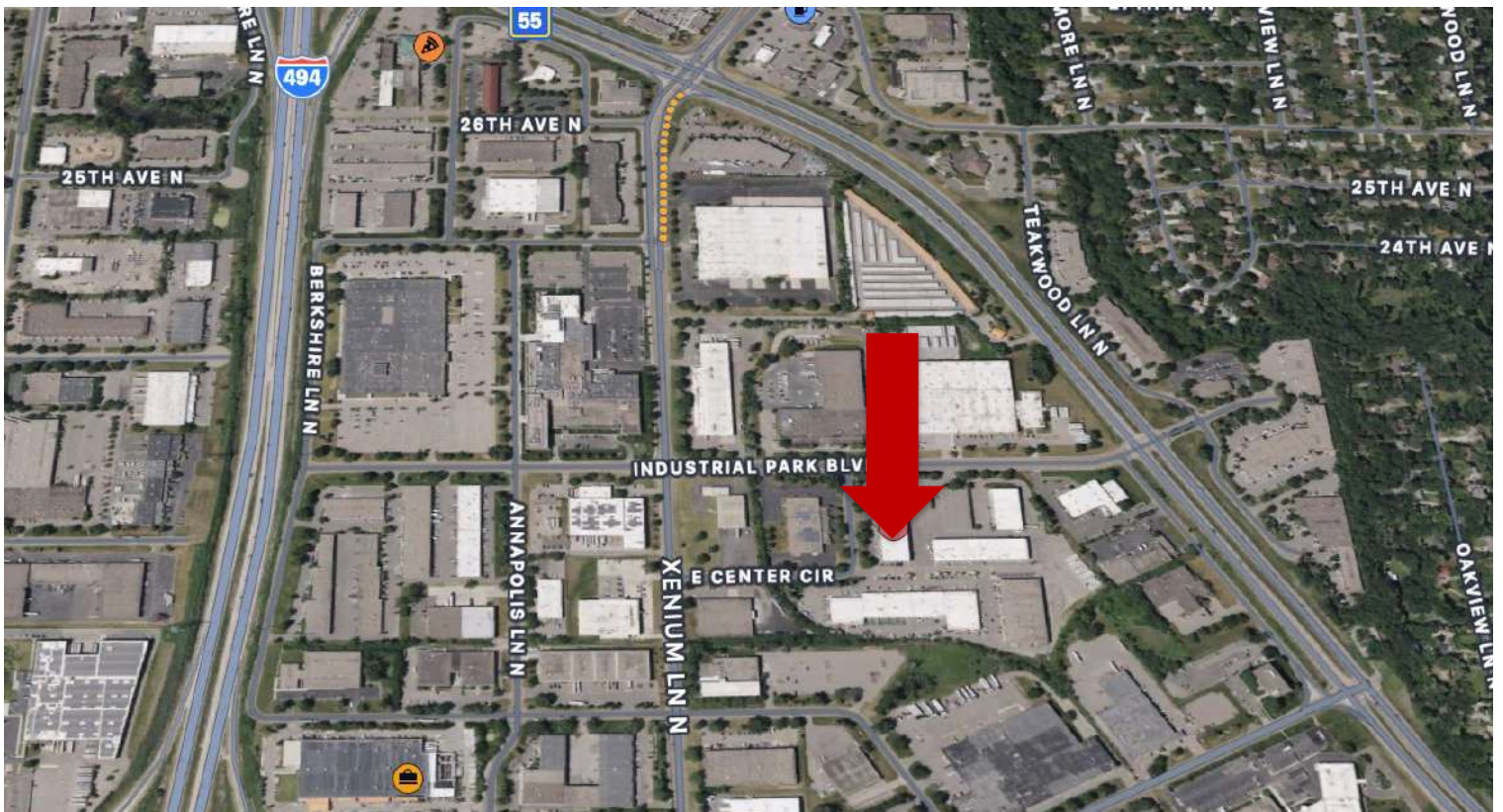


This information is accurate as of the date of printing and is subject to change without notice. All information is deemed accurate, but cannot be guaranteed.

Map



Aerial



This information is accurate as of the date of printing and is subject to change without notice. All information is deemed accurate, but cannot be guaranteed.